



## Roseworthy Student Newsletter

Page 1

### NEWS FROM THE APO

I will be on leave from Monday 7<sup>th</sup> May, returning to work Monday 21<sup>st</sup> May. During that time, if you do need any general assistance, please contact the Faculty of Science Office at North Terrace (email [faculty.sciences@adelaide.edu.au](mailto:faculty.sciences@adelaide.edu.au)). They will be able to answer most of your questions or be able to direct you to someone who can.

For specific areas, though, contact the following for:

Timetable, enrolment issues – Anne Mowday

Exam issues (eg, replacement exams for compassionate/medical reasons) – Anne Mowday

AHEMS/EMS/Work Experience – Judy Tucker or Wendy Hamood

#### Mid-year Honours

For students considering Honours in Semester 2 of this year, expressions of interest are now open through the Faculty of Sciences (<http://www.sciences.adelaide.edu.au/honours/>). I will be updating the projects list over the next week as there are a few new projects available. For students considering Honours in 2013, there will be information sessions running early in Semester 2.

#### Recognition Event

The School hosted its annual Recognition Event for the students that graduated in 2011 from the pre-veterinary and animal science programs as well as Honours and postgraduate research students. The main aim of the night is to recognise the graduating students for making it through their degrees and giving them a chance to show their families the facilities at Roseworthy. Additionally, we recognise students that have won various prizes and awards during the 2011 academic year (see <http://www.adelaide.edu.au/vetsci/scholarships/> for full details).

#### The winners for 2011 were:

The Principles of Animal Behaviour, Welfare & Ethics Prizes – Sian Hay (Pre-Vet) and Kathryn Burbidge (Animal Sc)

The Animal Sc Prize – Geri Laven-Law

The WV MacFarlane Prize – Frankie Bowley

The WJ Colebatch Memorial Prize – Sarah Bate

The Merry Wickes Prizes in Animal Pathology – Luisa Panetta (General Pathology) and Chalette Brown (Systems Pathology)

This year we also awarded Teaching Awards for academic staff:

The Early Career Teaching Award – Dr Bec Forder

The Teaching Award – Dr Susan Hazel

.....Continued Page Two

### DIARY DATES

**Friday 11th May –**  
Live Music Rosi Tavern  
Vet Pub Crawl

**Monday 14th May -Room**  
Inspections Commence

**Thursday 17th May -**  
11am-2pm Campus EWO visit

**Friday 18th May-**  
Live Music Rosi Tavern

**Saturday 23<sup>rd</sup> June -**  
AMWRO Ball

### Inside this issue:

More News from the APO	2
Residential College News	3
Residential College Merchandise	4
Library News	5
Maitidli Cafe and Roseworthy Tavern	6
New Chaplin Student Advisor	7
EMS Update	8
Australian Marine Wildlife Research & Rescue Organisation Ball EWO on Campus	9

## NEWS FROM THE APO (cont.)

### Year Level Representatives

Thanks to everyone that nominated for the positions of year level reps and to those that voted. The final count is in, and as they say on Survivor, the tribe has spoken:

Animal Science

Year 1: Meghan Taylor  
Year 2: Belinda Weir  
Year 3: Emily D'Arcy

Pre-Vet

Year 1: Hannah Bobrowski  
Year 2: Christine McGuiness  
Year 3: Alysha Thruscutt

DVM

Year 1: Man-Hei Ma  
Year 2: David Porublev

Di

Dr Di Barton  
Academic Programs Officer  
School of Animal and Veterinary Sciences



## ROSEWORTHY RESIDENTIAL COLLEGE



THE UNIVERSITY  
of ADELAIDE



### Community Garden

A site has been designated for a student community garden next to Hall II – speak to a SR if you would like to get involved.



### Music Room

A music space is being established in the mezzanine at Tappos – stay tuned for further details.

### Roseworthy Sports Dinner

A great night was had at the College Term II dinner with lots of money being raised for the College netball and basketball teams – go Panthers!

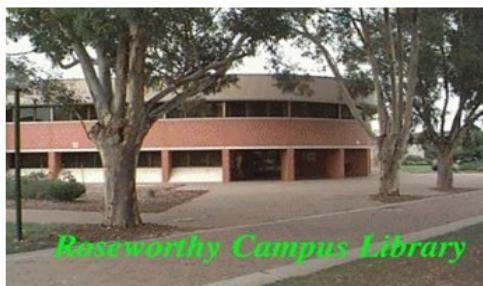


### Inspections

Room inspections will occur commencing the week of the 14<sup>th</sup> of May

**ROSEWORTHY**  
**RESIDENTIAL COLLEGE MERCHANDISE**  
*2012 merchandise will be available to order very soon. Speak to your Senior Residents!*





## NEWS FROM THE LIBRARY

### New Library Hours Semester One

Monday – Thursday  
Friday  
Sunday

8:30am – 6:00pm  
8:30am – 5:00pm  
1:00pm – 5:00pm

### Trial access to VetMed Resource

Trial access is currently available to VetMed Resource, one of the most comprehensive tools available for veterinary educators and their students.

VetMed Resource provides access to over 1 million CAB Abstracts records, integrated use of over 1,000 datasheets from the Animal Health and Production Compendium and extra value features such as prepared searches and review articles.

URL: [www.cabi.org/vetmedresource](http://www.cabi.org/vetmedresource)



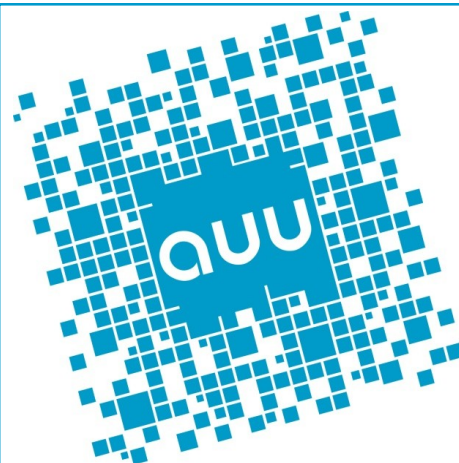
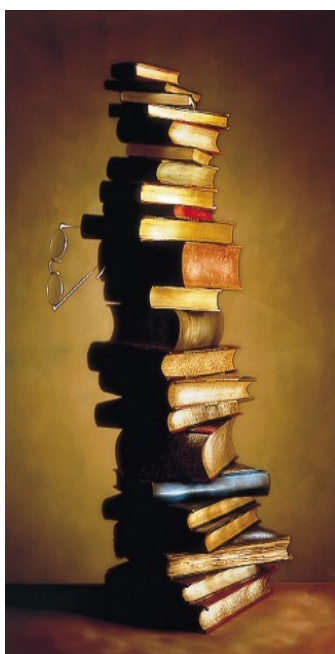
### Borrowing from the Reserve Collection

Did you know that you can borrow books from the Roseworthy Reserve Collection for overnight loan or for the weekend?

Weekend Reserve Collection books can be borrowed after 4pm on Friday.

You can book an item from the Reserve Collection for overnight or weekend loan (ask at the Library Service Enquiries Desk).

Books borrowed from the Roseworthy Reserve Collection must be returned to the Roseworthy Library – they cannot be returned to the Barr Smith or Waite Libraries.



**AUU MEMBERSHIPS**  
**STUDENT DIARIES**  
**GYM MEMBERSHIPS**  
**MEDICAL SUPPLIES**  
**COVERALLS**  
**BUS TICKETS**  
**NEWSPAPERS**



## MAITIDLI CAFE NEWS

Opening times 8am to 4pm

New Breakfast item: Tomato and cheese omelette only \$6.00!

**Hot Doughnuts** **Wednesdays** 10am to 12pm \$1.50ea or \$1 with a coffee purchase!

Don't forget to utilise our pre-order/pre-pay system,  
especially on those busy days!

Phone orders are most welcome..37815!

Book your upcoming function with us now!

## ROSI TAVERN NEWS

FRIDAYS

Knock off and nibbles

4pm to 6:30pm

Meet new people or treat your staff, after a hard week at the office!

Vet Pub Crawl starting at The Tavern 11<sup>th</sup> May with....

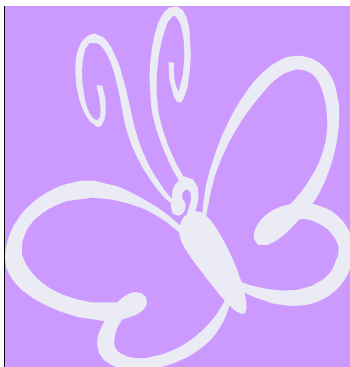
Un-Plugged



Live music in Rosi Tavern  
Friday 11<sup>th</sup> May and 18<sup>th</sup> May

4pm to 6pm  
Bar snacks





## Introducing our new chaplain

**ILZE COOMBE**

From next Thursday we will have a new chaplain to chat to on campus at Roseworthy. For the next 2 weeks we're trialling Thursdays from 10am.

Ilze (pronounced Ilzee) is looking forward to meeting you all, students and staff and you can catch her around the campus for a chat and coffee, either at the chapel or wherever you feel comfortable.

If you have a pressing need her mobile is 0424 972 033.

Ilze says about herself: "Even though I come from a Lutheran background, I feel non-denominational, so all can find a listening ear.

I speak English, Latvian and German fluently.

I have studied at uni like many of you and have a Bachelor of Management (Marketing) and was part of UniSA's prestigious Marketing Project Program. I am also a trained graphic designer and have illustrated 5 books. For good measure I added a Dip. Theology (Counselling) and Cert. III & IV in Community Services Work to my study portfolio.

I am married for the second time to Peter, a textile artist. From my first marriage I have 2 grown up children. My hobbies include acrylic painting, making contemporary art quilts, reading, sewing, cooking, relaxing in my garden and enjoying the company of husband and our cat."



## ROSEWORTHY STUDENT SUPPORT AND DISABILITY ADVISOR

### ***The Roseworthy Student Advisor provides the following services:***

- information and support to undergraduate, postgraduate and international students (both day and residential) for personal issues impacting on their study
- assessment of needs for students with disabilities or medical conditions which impact on their studies, and arranges reasonable adjustments and provision for such students
- support to families of residential students and staff living on campus
- assistance to the campus management in responding to critical incidents
- non-academic group programmes and workshops to support students in their studies and campus life
- campus community initiatives which support students in achieving their goals

The Roseworthy Student Support and Disability Advisor offers a free and confidential service provided to you by the University. Any information you disclose during your appointment will not be released without your consent unless there are serious risks to your safety or that of another person.

### ***For further information, contact the Roseworthy Student Advisor:***

**Sally Polkinghorne**  
G27, Williams Building Roseworthy Campus  
University of Adelaide

Phone: +61 8 8303 7932  
Email: [rsa@adelaide.edu.au](mailto:rsa@adelaide.edu.au)  
[www.adelaide.edu.au/disability/](http://www.adelaide.edu.au/disability/)

## EMS REMINDERS

### AHEMS

**Reports for April break – Last day for accepting Tuesday 8<sup>th</sup> May 2012.**

These can be handed in at the Williams building – either to Judy Tucker or put in the EMS drop box

**Insurance forms for July Mid Year Break**

**Insurance paperwork deadline is 1<sup>st</sup> June, 2012.**

Forms and information is available at the following link:

<https://www.adelaide.edu.au/vetsci/current/notice/ahems/>

If you are having difficulty finding a placement, or if you are having difficulty getting your documentation in on time please come and see Judy.

SONIA is now working (yaaaay!), so you should be able to log on and see what is available. The link to SONIA is on the AHEMS home page. We are hoping to have a session next Thursday, around 12.15pm in the Stefanson Theatre to give a demonstration, but you will be informed of this early next week.

We have put another link on the home page with news from students who have been on placement. If you have had a good experience on a placement and want to share it with others, please submit a short report, along with a photo if possible, and we can post it to this page. There are a few submitted already so have a read and see what others have done. The link to this page is:

<https://www.adelaide.edu.au/vetsci/ems/ems-news.html>

### DVM

Last day for July break confirmation notification forms (We will call these DVM EMS FORM 1) and insurance forms is 28<sup>th</sup> May 2012. Many of you have already submitted your confirmation forms, but I'm still waiting on the insurance forms. You can hand these up to Judy in the Williams Building or put them in the EMS drop box.

***WE ARE NOT ABLE TO PROCESS LATE FORMS. IF YOU ARE EXPERIENCING DIFFICULTIES ORGANISING A PLACEMENT, PLEASE SEE WENDY OR JUDY BEFORE THE DEADLINE.***







## Australian Marine Wildlife Research & Rescue Organisation

Come and join us for a night of fun, celebrations, dancing, great food and fund raising for our very unique Marine Wildlife! This event will again raise the much needed funds that keeps' AMWRRO afloat and gives thousands of marine animals a second chance of life.

Bring a friend or three or even better; bring a table of ten and enjoy a fantastic night of entertainment and help support the people who dedicate thousands of hours each year to rescuing and rehabilitating these amazing animals.

Raffles, silent auctions, live music and a stunning Pure Envy piece of jewellery will be won by a lucky person – don't miss your chance to be a part of this important and worthwhile night and help save a life.

Date: Saturday 23<sup>rd</sup> June 2012

Location: Intercontinental Grand Ball Room – Adelaide

Time: 6:30pm – midnight

Cost: \$150.00 – tables of 10 available

To buy tickets: Please contact Aaron at [aaron@amwrro.org.au](mailto:aaron@amwrro.org.au)

### *EWO on Campus*

Terri Finn, Senior Education & Welfare Officer with Student Care will be visiting the campus on Thursday 17<sup>th</sup> May between 11am-2pm.

If you would like any information on the following please make and appointment to see Terri.:

- Advice, advocacy and representation in complaints, grievances and student rights issues
- Accommodation assistance
- Loans and small grants
- Information and referral for issues which affect a student's ability to study
- Centrelink, tax and legal assistance



To make an appointment please contact Amy at the Roseworthy AUU office on  
Phone : 8313 1450 or  
Email: [amy.miller@adelaide.edu.au](mailto:amy.miller@adelaide.edu.au)

*Please email any contributions to the Student Newsletter to Elaine Wilson on [elaine.wilson@adelaide.edu.au](mailto:elaine.wilson@adelaide.edu.au)*