

## NEWS FROM THE APO

Well, you should all be well into your courses by now – and possibly wondering what you have got yourself into! If anyone is experiencing any difficulties (either study related or otherwise) and need assistance, please drop into the Williams Building to chat with either me or Sally. Assignments and mid semester tests will be occurring over a number of courses over the next few weeks, so make sure you keep an eye on your due dates. There are a number of different activities coming up, so please also keep an eye on the student calendar at <http://www.adelaide.edu.au/vetsci/current/newsletter1/>.

Remember, that you need a life outside of the class room so get involved in other activities to give yourself a break from the books – whether it be walking the GAP dogs at the clinic, playing sport or just watching a sappy movie.

Enjoy your mid-semester break.

Di

Dr Di Barton  
Academic Programs Officer  
School of Animal and Veterinary Sciences

### DIARY DATES

**Tues 27<sup>th</sup>, March**—Volunteer Eco Students Abroad on Campus

**5pm Thu 22<sup>nd</sup> March** – Meat Judging information session – Stefanson

**12noon Wed 28<sup>th</sup> March** – APESMA session –Richardson (Careers/Employment agency)

**Thu 29<sup>th</sup> March**—Roseworthy Steer Program 12.30pm in G03 Callaghan

**31<sup>st</sup> March** – Census Date

**6pm Wed 11<sup>th</sup> April** – Recognition Event for any student that graduated from 2011 (contact Di Barton)

**Thu 12<sup>th</sup> April** – Science Graduation ceremonies at North Terrace



Some things are worth fighting for.....  
The winning Laser Skirmish team  
O'Week 2012

### Inside this issue:

Residential College News	2
Library Opening Hours AUU	3
Worlds Greatest Shave	
Netball Club	
Lutheran Students & Friends	4
Maitidli Cafe & Rosi Tavern	
Childcare Centre	5
Student Support & Disability Advisor	
Pilates	6
Anzac Day Service	7
Volunteer Eco Students	8
Rotaract on Campus	9
Essential Reading	10
O'Live	11

## ROSEWORTHY RESIDENTIAL COLLEGE



The Residential College has had a fantastic start to 2012 with lots of events and opportunities for students to get to know each other and settle into Campus life! The first formal Residential dinner was a huge success – great food, great company and great entertainment. O'Week events also added to the entertainment especially Laser Skirmish which brought out the competitive streak in a few!

Stay tuned for more on Campus Events.

**David Purdie**  
*Manager, Student Services (Roseworthy)*



The Class of 2012





Roseworthy Campus Library

SEMESTER	ONE	LIBRARY	HOURS
Monday – Thursday		8:30am – 6:00pm	
Friday		8:30am – 5:00pm	
Sunday		1:00pm – 5:00pm	

Leukaemia Foundation

**WORLD'S  
GREATEST  
SHAVE™**

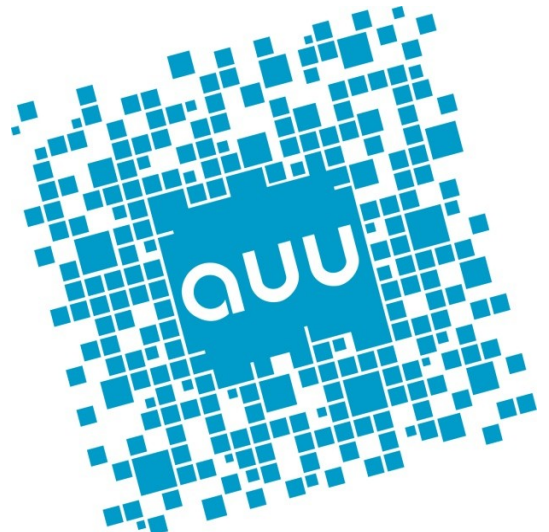


The Worlds Greatest College Senior  
*Please donate to this worthy cause.*

- AUU MEMBERSHIPS**
- STUDENT DIARIES**
- GYM MEMBERSHIPS**
- MEDICAL SUPPLIES**
- COVERALLS**
- BUS TICKETS**
- NEWSPAPERS**

Don't have what you need?  
The AUU is always looking for ways to improve so please forward any suggestions/comments to Amy Miller  
[amy.miller@adelaide.edu.au](mailto:amy.miller@adelaide.edu.au)  
phone 31450 or drop in and introduce yourself.

**OPENING HOURS**  
**MONDAY & TUESDAY—CLOSED**  
**WEDNESDAY—10.00am - 3.00pm**  
**THURSDAY— 9.00am-5.00pm**  
**FRIDAY—10.00am-3.00pm**





### ROSEWORTHY COLLEGE NETBALL CLUB PLAYERS WANTED - ALL WELCOME

- Games played on Saturday's in Gawler starting in April
- No netball experience required
- Open to all students and staff
- Make new friends and get fit while having fun
- To find out more

Email [samantha.fischer@student.adelaide.edu.au](mailto:samantha.fischer@student.adelaide.edu.au)



**Lutheran  
Students  
and  
Friends**

Embark on a journey of discovery during **40 Days of Purpose** and answer life's most fundamental question: "What on earth am I here for?" This amazing study has changed millions of lives all over the world, helping people to reduce their stress, simplify decision making and find their purpose in life.

**When: 4.30pm Sundays from 25th March**

**Where: Roseworthy Chapel**

**Every one welcome!**

Study guides , books and light refreshments provided.

To find out more contact Olivia via email on [livron@bigpond.net.au](mailto:livron@bigpond.net.au)

**40 DAYS OF  
PURPOSE**

## Academic Skills Tuition

Support to  
**research, plan, write**  
and **edit** your  
essays,  
prac reports  
or thesis



Develop **study**  
**skills** and **exam**  
**techniques,**  
**organisational**  
**skills** and  
**time management**

Experienced tutor and published author.

Negotiable rates for one to one tutoring or small group sessions.

Call **Dana** on: 0417 081 051



**Opening Times**

**8am to 4pm**

We hope you are all settling in well and will enjoy a great year with our staff and the fantastic food our chefs make for you.

**New Breakfast item:**

Tomato and cheese omelette only \$6.00!

**Don't forget to utilise our pre-order/pre-pay system, especially on those busy days!**

**Phone orders are most welcome..37815!**

Why not stop in for a coffee made by our trained staff and talk with colleagues on our comfortable couches?

**Book your upcoming function with us now!**



**ROSI TAVERN NEWS**

**FRIDAYS**

**Knock off and nibbles**

**4pm to 6:30pm**

Meet new people or treat your staff, after a hard week at the office!

**Un-Plugged**



Live music in Rosi Tavern

Friday 23<sup>rd</sup> March

4pm to 6pm

Bar Snacks

**DID YOU KNOW???**

Student mail boxes have been allocated. If you are a second year student or above you should have one. second year Please check the pigeon holes next to Maitidli Cafe entrance to make sure there is one with your name on it . If there is not please see Elaine in the Office opposite the Cafe.



**ROSEWORTHY CAMPUS**  
**Child Care Centre**

**The nurturing environment your child deserves**

Just 10 minutes from Gawler with a relaxed, country feel, our not-for-profit Centre offers:

- High staff-to-child ratios
- Two well-equipped outdoor play areas
- Start Right, Eat Right accredited meals and nappies provided
- Care for children aged 3mths to 6 years, Mon-Fri, 7.30am-6.00pm, incl. school hols.

**Phone 8521 2895** or visit [www.adelaide.edu.au/childcare/rosworth](http://www.adelaide.edu.au/childcare/rosworth)

*The Roseworthy Campus Child Care Centre is licensed by the Children's Services Office and accredited by the National Childcare Accreditation Council.*

## ROSEWORTHY STUDENT SUPPORT AND DISABILITY ADVISOR

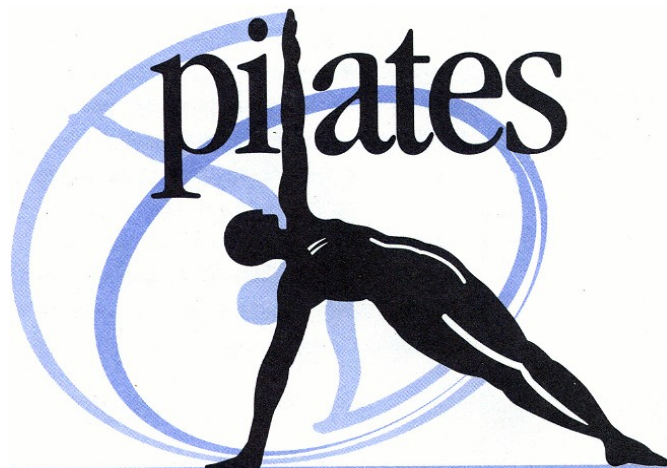
The Roseworthy Student Support and Disability Advisor offers a free and confidential service provided to you by the University. Any information you disclose during your appointment will not be released without your consent unless there are serious risks to your safety or that of another person.

**For further information, contact the Roseworthy Student Advisor:**

**Sally Polkinghorne**  
G27, Williams Building Roseworthy Campus  
University of Adelaide

Phone: +61 8 8303 7932  
Email: [rsa@adelaide.edu.au](mailto:rsa@adelaide.edu.au)  
[www.adelaide.edu.au/disability/](http://www.adelaide.edu.au/disability/)

**Alternative Examination Arrangements (AEA)**  
**All applications must be lodged with**  
**The Disability Service by**  
**Friday 4<sup>th</sup> May 2012**



***"Pilates is for everyone of any fitness level & it's a great way to balance out your health and wellbeing."***

**When:** Starts Monday April 16<sup>th</sup> at 7pm (weekly)

**Where:** On Campus - Callaghan 18A & 18B

**Cost:** \$8 per class - students  
\$10 per class - staff

- ***Remember to wear comfortable clothing - no shoes or socks worn during class.***
- ***Mats will be provided (but feel free to bring your own)***
- ***Water bottle essential***

To register your interest please collect a registration form from Elaine Wilson in the Main Building. For any further information please contact Sally Polkinghorne on 83137932 or [sally.polkinghorne@adelaide.edu.au](mailto:sally.polkinghorne@adelaide.edu.au)

# ANZAC DAY 2012

ON 19 FEBRUARY 1942, JAPANESE AIRCRAFT bombed Darwin, killing hundreds of service personnel and civilians. This was the first of a series of almost 100 Japanese aerial attacks on Australia, ending in November 1943.

Information on Anzac Day commemorations:  
[www.dva.gov.au/anzac](http://www.dva.gov.au/anzac)



70th anniversary of the bombing of Darwin

**ANZAC DAY 2012**

## Anzac Day Dawn Service

**6.00am Roseworthy Chapel**

**followed by a BBQ breakfast**

# All Welcome

# Volunteer Eco Students Abroad



VESA ([www.vesabroad.com](http://www.vesabroad.com)) is a truly unique two week experience incorporating meaningful volunteer work and an Amazonian jungle tour in South America's Ecuador, volunteering whilst staying with a host family, followed by an incredible week long cruise of the Fijian Islands or working in orphanages or in crocodile conservation in South Africa and Kwa-Zulu Natal followed by an amazing safari!

## Where would you like to volunteer this year?



If you choose **South America**, you will be based in a picturesque Ecuadorian jungle village and commute daily via canoe to an indigenous community to undertake vital volunteer work. This includes helping to construct much needed facilities for the village school, teaching English and installing ablution facilities to give the villagers access to better health and hygiene! Your second week with us will see you trekking through the wild jungle of the Amazon Basin. Here you will see all manners of jungle life, stay in tribal accommodation & lodges, visit a shaman and top the trip off with an intense day of white water rafting!



If your choice is **The Fijian Islands**, you will be working alongside a local non profit organization. Here, you will be staying with a local family in their village, working in the community helping to educate the children by teaching them English, as well as basic hygiene, building washroom facilities at the school as well as helping to construct water tanks and pipelines. Your second week of your trip will see you sailing up the picturesque remote Yasawa Islands. Every day will see you partake in a different activity, whether it be relaxing in your own private hammock, snorkelling/scuba with sea turtles, kayaking to a deserted island, or chilling on the beach with new mates, it's a trip like no other!



Or if your choose **Africa** as your destination you will be working in the world heritage site of St. Lucia. This year we will be working alongside the local Zulu tribe; working in orphanages, teaching English, building houses for impoverished families and working alongside cheetahs and crocodile's in our conservation projects. To top off your time in Africa, you will travelling by open air bus, visiting 3 game parks, sighting Elephants, Rhinos, Giraffe, Hyena, Zebras, Leopards, Hippos and Lions!

If you would like to be a part of something incredible this summer, or would simply like more information we will be hosting information sessions at the following location:

**Tuesday 27<sup>th</sup>, March, 2012      University of Adelaide - Roseworthy Campus  
Callaghan Building, Room G03**

**Meetings begin on the hour    12 pm, 1pm, 2pm, 3pm, 4pm &    Last meeting at 5pm**

Feel free to bring along any friends you feel might be interested in this opportunity. If you can't make the meeting please feel free to find out more information or apply online at [www.vesabroad.com](http://www.vesabroad.com) Why not check out our Facebook group, Volunteer Eco Students Abroad to see what current participants have to say! We look forward to seeing you at the meeting!



# ***ROTARACT***

**On Campus  
Monday 26th March  
at Resi students  
dinner from 6 -7pm**



***AN INVESTMENT IN THE FUTURE  
Rotaract, a service club for men  
and women aged 18 to 30.***



# How to survive as first-year krill

Just started university?  
Here's the harsh  
reality of your new life

PATRICK BALL

YOUR tutor is your first point of contact in your discipline. Lecturers are exalted beings and have many duties. Among these, close interaction with undergraduates seldom features. Some lecturers, indeed, are reluctant to sully themselves by contact even with postgraduates.

Many of you have lately been big fish in small ponds. You are now in a rather different water-body. The first-year is to a university what krill (or, perhaps, plankton) is to the ocean: present every-

where, drifting aimlessly, in huge numbers; essential to the food chain but, nonetheless, at the bottom of it; too minute to be seen by the naked academic eye.

This eye prefers, besides, to view things from far off. Teachers work at the coalface; lecturers are more often found glancing down from ivory towers.

To spare them the horror of having to fraternise with those they instruct, an intermediary, semi-academic creature has been evolved, one humble enough to consort with undergraduates to the point of learning their names, while privileged too to be on speaking terms with academic staff. This is the tutor.

Lecturers and tutors demand differing levels of deference, in part because tutors are commonly

postgraduates: mere glorified students. Should you be so fortunate as to find yourself being passed in a corridor by one of your lecturers, the correct response will be to flatten yourself against the wall, bury your face in your elbow and cringe if spoken to.

With a tutor, one need merely lower one's gaze to the floor. It is permissible to greet one's tutor by name. Attempting this with a lecturer would be considered too familiar.

Although a postgraduate is the larval version of an academic — a stage through which the insect develops en route to its final form — their teaching functions are distinct and opposed. Lecturers lecture, tutors tutor.

In tutorials, unlike lectures, students are not just permitted but

expected to talk. This crucial distinction is one that many seem never to grasp. Those nervous about participating may find it productive to regard tutorial contributions as projectile vomit. One spatters one's tutor and fellow-students with the half-digested mess of facts that one's lecturer has crammed down one's throat. (The round-table seating pattern helps facilitate this sharing.)

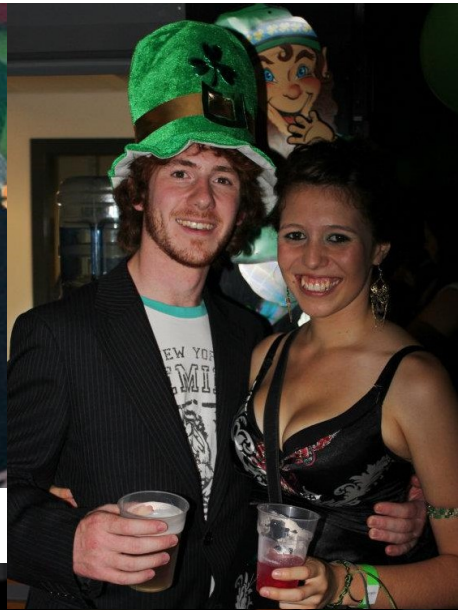
In lectures, the vomit is unidirectional, something the adversarial seating arrangement promotes. Respectful silence is enjoined, response discouraged. Respectful silence in tutorials is highly undesirable: it obliges the tutor to speak.

Some of you will have the misfortune to serve as postgraduate tutors yourselves in future, at

which point I hope you will reflect ruefully on the trouble you gave your own tutors.

Tutoring powerfully resembles nursemaid-ing: the latter entails potty training, nappy changing and encouragement to talk and crawl; the former involves the related tasks of running tutorials, essay marking, provision of advice and response to inquiries. This nannying work frees up lecturers, like celebrity parents, to lead beautiful lives involving conference-going and research — although even these are at times tawdrier than may appear.

*Patrick Ball is a postgraduate student in the School of History and Classics at the University of Tasmania. These opinions are his alone.*



# O'Live 2012

