

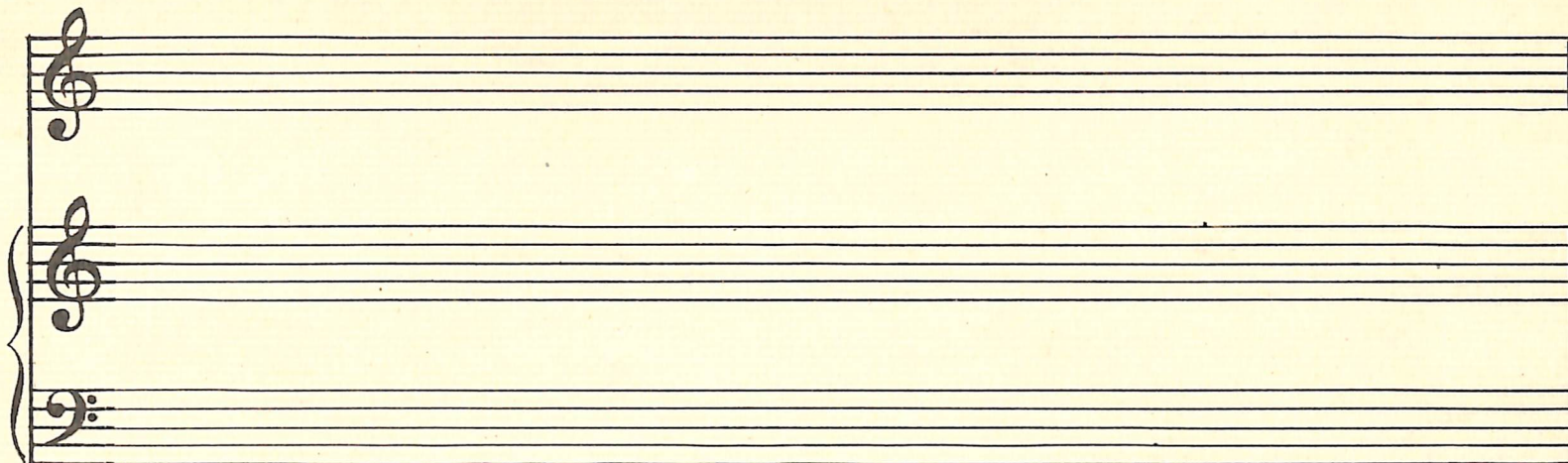
"THE LORD IS MY SHEPHERD."

Words from

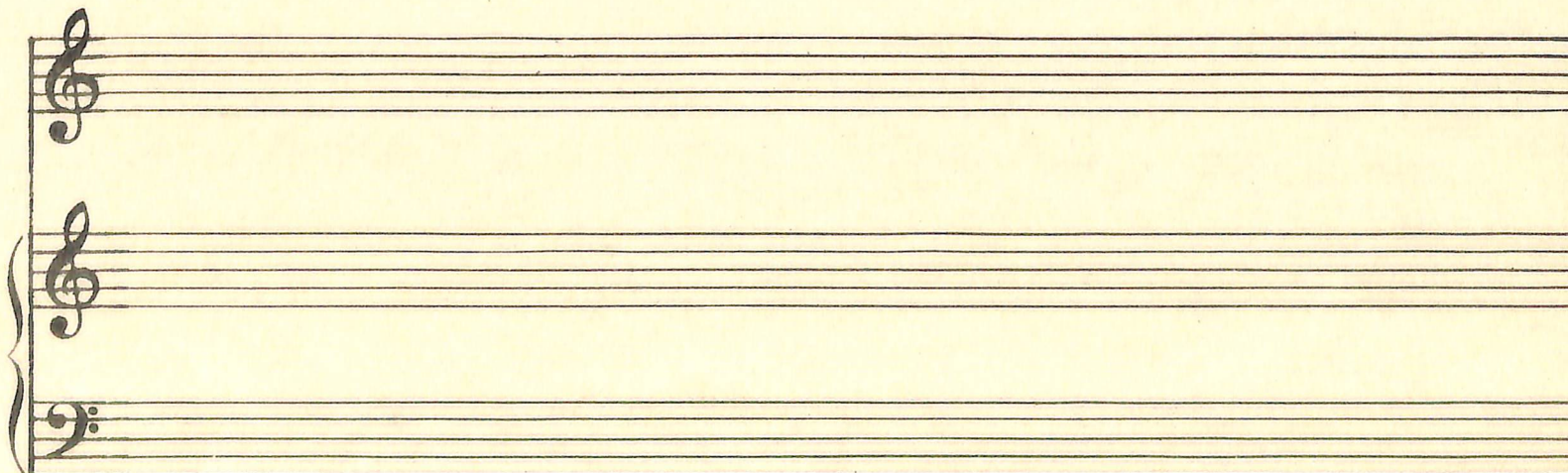
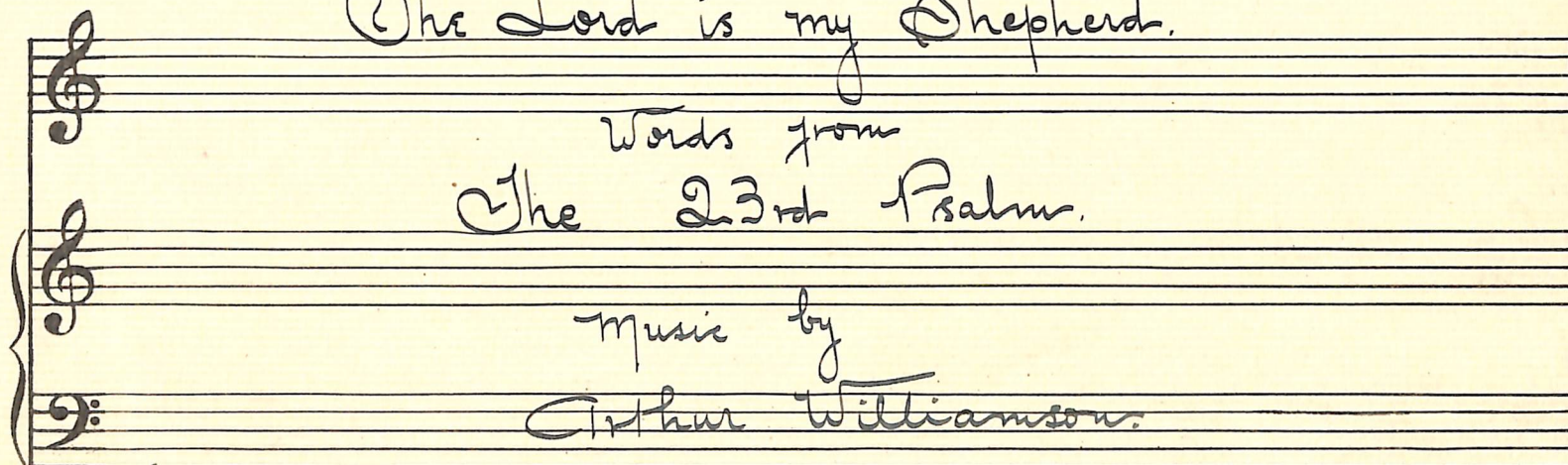
The 23rd Psalm.

Music by

Arthur Williamson.



"The Lord is my Shepherd."



- The Lord is my Shepherd. -

Tempo Comodo.

mf

Semplice con espressione.

dim.

Lord is my Shep-herd, I shall not want. The

Lord is my Shep-herd, I shall not want. The

mak-eth me to lie down in green pas-sies etc

This system contains the first two staves of music. The vocal line is written in G major (one sharp) and includes the lyrics "mak-eth me to lie down in green pas-sies etc". The piano accompaniment consists of chords in the right hand and single notes in the left hand.

lead-eth me be-side the still waters. etc re-

This system contains the second two staves of music. The vocal line continues with "lead-eth me be-side the still waters. etc re-". The piano accompaniment includes dynamic markings such as "mf" and "cres" (crescendo), and a key signature change to F major (two flats) indicated by "b loco".

-sion-eth my soul, etc lead-eth me in the

This system contains the third two staves of music. The vocal line includes the lyrics "-sion-eth my soul, etc lead-eth me in the". The piano accompaniment features a "dim" (diminuendo) marking.

paths, the paths of right-ness

This system contains the final two staves of music. The vocal line concludes with the lyrics "paths, the paths of right-ness". The piano accompaniment continues with chords and single notes.

For his names

LENTO.

sake.

Altempo

" Su Reeds.

ff

Agitato ma con risolute.

Yea though I walk through the valley of the shadow of

mf *cus.*

Death Yea though I walk through the valley of the

mf *cres*

Shadow of Death I will fear no evil, for

confiducia

Thou art with me Thy rod and thy staff they

com- fort me. they com- fort me. The

Tempo primo.

queto

Lord is my shep-herd, I shall not want. The

The first system of handwritten musical notation. It features a vocal line on a single treble clef staff and a piano accompaniment on two staves (treble and bass clefs). The key signature is three flats (B-flat major or D-flat minor). The lyrics are "Lord is my shep-herd, I shall not want. The". The piano accompaniment consists of a steady eighth-note pattern in the right hand and a more active bass line in the left hand.

Lord is my Shep-herd I shall not want He

The second system of handwritten musical notation. It continues the vocal line and piano accompaniment from the first system. The lyrics are "Lord is my Shep-herd I shall not want He". The piano accompaniment continues with similar rhythmic patterns. The system ends with a key signature change to two sharps (D major or F# minor).

make... eth me to lie down in green

Solo. Ped.

The third system of handwritten musical notation. The lyrics are "make... eth me to lie down in green". The piano accompaniment features a prominent "Solo. Ped." section in the right hand, marked with a fermata and a 7-measure rest. The left hand continues with a steady accompaniment. The key signature remains two sharps.

pas-tures. He lead... eth me be

The fourth system of handwritten musical notation. The lyrics are "pas-tures. He lead... eth me be". The piano accompaniment continues with a steady accompaniment. The system ends with a key signature change to one sharp (E major or C# minor).

- side the still waters. He re - stor - eth my

Handwritten musical score for the first system. It consists of a vocal line on a single staff and a piano accompaniment on two staves. The key signature is G major (one sharp). The lyrics are "- side the still waters. He re - stor - eth my". The piano part includes a forte (*f*) dynamic marking and a *crus* marking.

soul. He lead ... eth me in the

Handwritten musical score for the second system. The key signature changes to B minor (two sharps). The lyrics are "soul. He lead ... eth me in the". The piano accompaniment continues with chords and melodic lines.

paths ... of right ... con - vers. He

Handwritten musical score for the third system. The lyrics are "paths ... of right ... con - vers. He". The piano part includes the markings *piu mosso* and *Animato*. The dynamics range from *ff* (fortissimo) to *ff*.

lead ... eth me in the paths ... He

Handwritten musical score for the fourth system. The lyrics are "lead ... eth me in the paths ... He". The piano accompaniment continues with sustained chords and melodic fragments.

lead-eth me in the parts

Allargando.

right! con-ness. For his

Lento.

dim.

name's sake. a tempo.

Dim e rall.

- side the still waters. He re - stor - eth my

Handwritten musical score for the first system. It consists of a vocal line and piano accompaniment. The key signature is G major (one sharp). The vocal line begins with a half note G4, followed by quarter notes A4, B4, and C5. The piano accompaniment starts with a half note G3 and a half note B2. Dynamics include *p* and *f*. A *cres* marking is present at the end of the system.

soul He lead - eth me in the

Handwritten musical score for the second system. The key signature remains G major. The vocal line continues with quarter notes D5, E5, and F5. The piano accompaniment features chords and moving lines. Dynamics include *f*.

paths the paths of right - eous - ness. He

Animato.

p *molto mosso.* *ff*

Handwritten musical score for the third system. The key signature remains G major. The vocal line has a long note G4. The piano accompaniment is more active. Performance markings include *Animato.*, *p*, *molto mosso.*, and *ff*.

lead - eth me in the paths - - - - - He

Handwritten musical score for the fourth system. The key signature remains G major. The vocal line has a long note G4. The piano accompaniment continues with chords and moving lines.

lead- eth me in the paths, the paths of

Allargando

right - eous - ness. " For his

LENTO

name's sake.

Allegro

po- rall | dim.