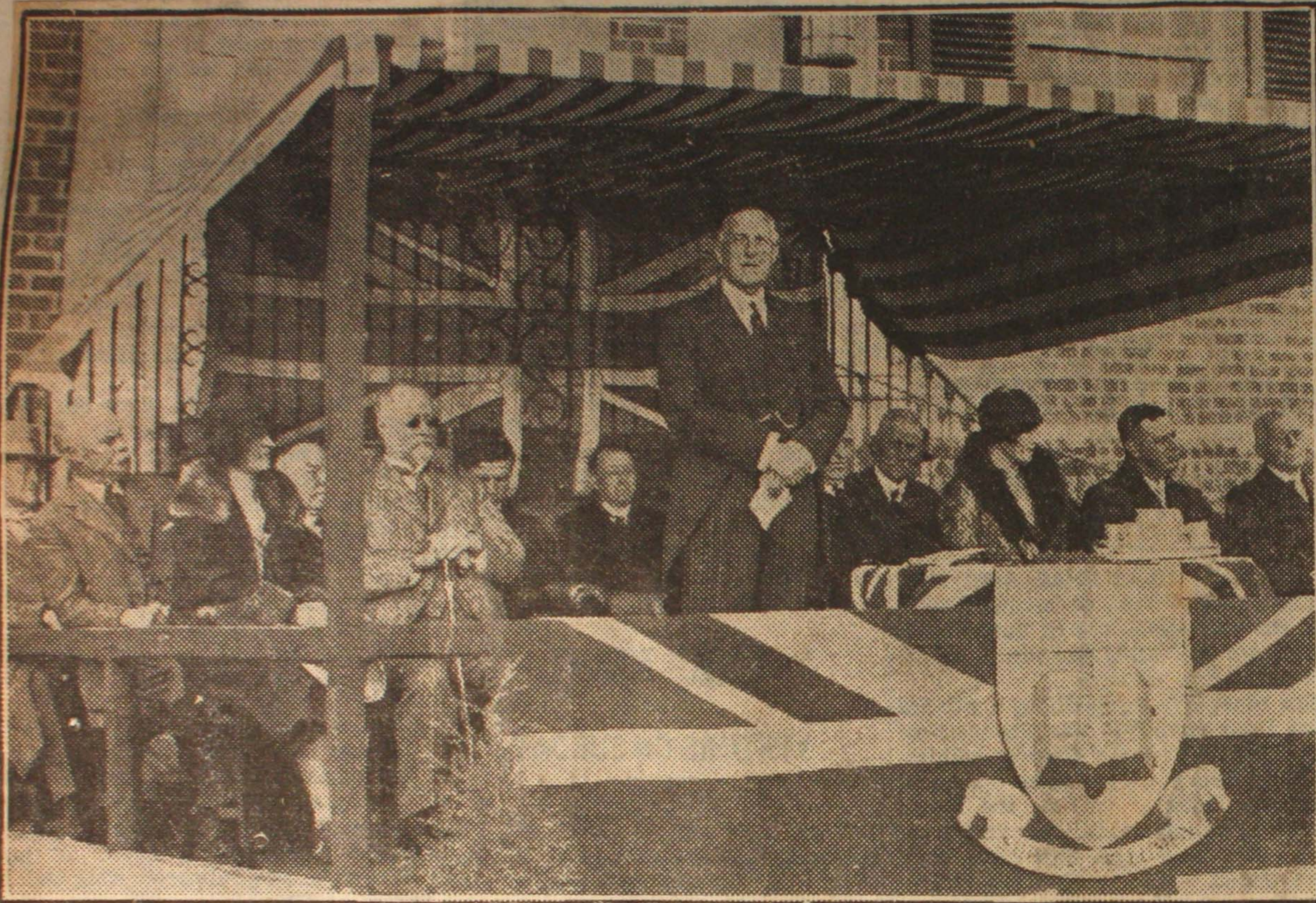


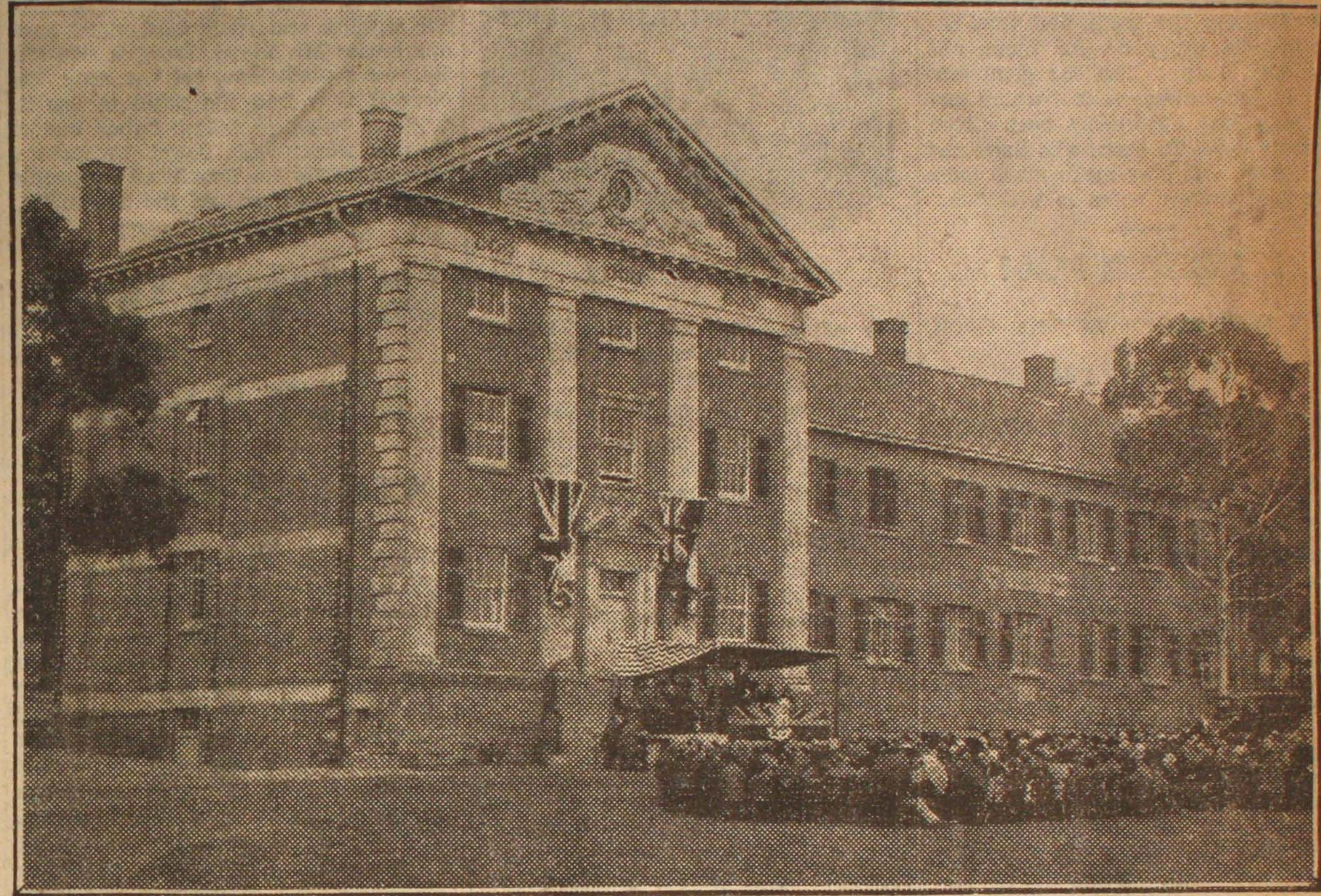
APV 23-4-29

THE NEW BUILDING.



GOVERNOR PERFORMING THE OPENING CEREMONY.

Included in the group are Miss Melrose, Sir John Melrose, the Lord Mayor of Adelaide (Mr. Lavington Bonython), his Excellency the Governor (Sir Alexander Hore-Ruthven), the Chancellor of the University (Sir George Murray), the Minister of Agriculture (Hon. J. Cowan), Lady Hore-Ruthven, the Premier (Hon. R. L. Butler), and the Chairman of the Council for Scientific and Industrial Research (Sir George Julius).



The Melrose laboratory at the Waite Institute for Agricultural Research forms the south wing of what is to be the main building of the Institute.

Krischock, photos.