



**FACIES INTERPRETATION AND DIAGENESIS  
OF THE COSSIGNY MEMBER, BEAGLE SUB-BASIN  
NORTH WEST SHELF, WESTERN AUSTRALIA**

**Thesis submitted to the Faculty of Science,  
University of Adelaide**

**In  
Partial fulfilment of the Requirement for**

**the  
M. Sc. Degree**

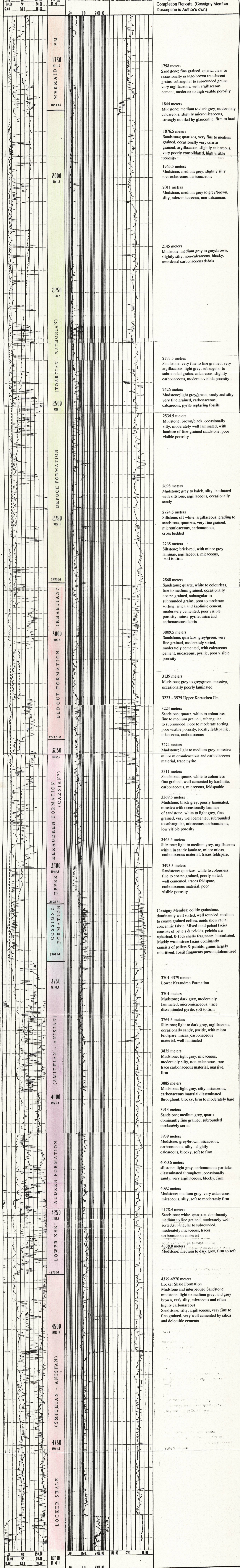
**in**

**Petroleum Geology and Geophysics,**

**The University of Adelaide**

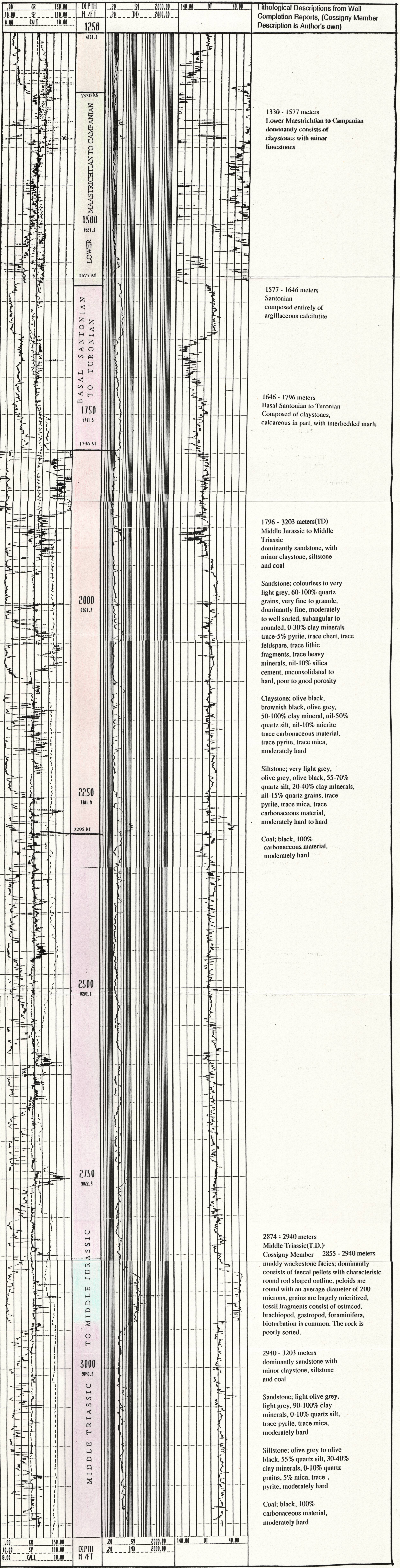
**by  
Aslam Chapri  
1994**

*Awarded 1994*



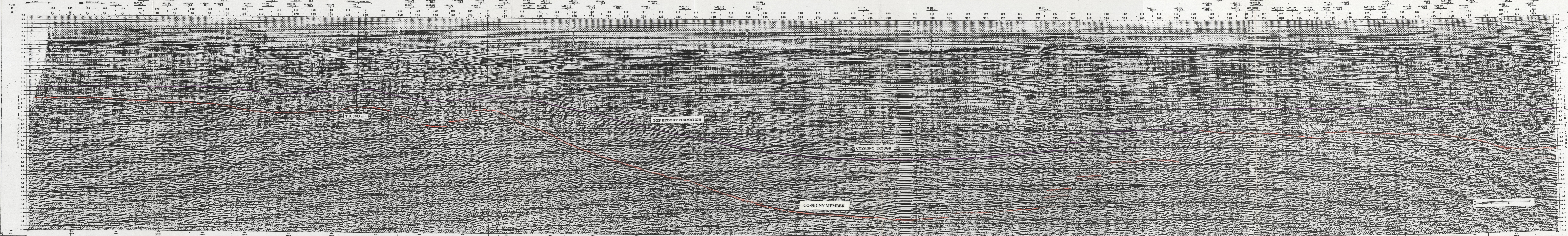


095.3  
C467  
C.2



095.M  
C467  
C.2

LINE 69-379  
S.P. 50-480



093.m  
C467  
C.2



LINE 80-05  
S.P. 1-1670

S.P. 1530 Tie with 69-238 S.P. 143  
 S.P. 1400 Tie with 74-1323 S.P. 05  
 S.P. 1280 Tie with 69-239 S.P. 140  
 S.P. 1005 Tie with 68-185 S.P. 222  
 S.P. 520 Tie with 74-1350 S.P. 130  
 S.P. 150 Tie with 68-186 S.P. 220  
 S.P. 42 Tie with 79-3 S.P. 281  
 " " 79-1 S.P. 381

W.D. (METRES)	107	109	110	111	111	111	111	111	112	112	112	112	112	112	111	110	109	109	111	110	109	108	109	110	119	118	107	109	108	109	114	122	123	124	124	125	125	125	125	125	125	125	123
DEPTHPOINTS	893	853	813	773	733	693	653	613	573	533	493	453	413	373	333	293	253	213	173	133	93	852	812	772	732	692	652	612	572	532	492	452	412	372	332	292	252	212	172	132	92	53	
SHOTPOINTS	1640	1600	1560	1520	1480	1440	1400	1360	1320	1280	1240	1200	1160	1120	1080	1040	1000	960	920	880	840	800	760	720	680	640	600	560	520	480	440	400	360	320	280	240	200	160	120	80	40	1	

TIME IN SECONDS

TIME IN SECONDS

MAIN UNCONFORMITY

TOP BEDOUT FORMATION

COSSIGNY MEMBER



098.m  
C467  
C.2



LINE 80-12  
S.P. 1-1358

S.E.

LN 80-2A  
SP 1656

LN 80-3  
SP 422

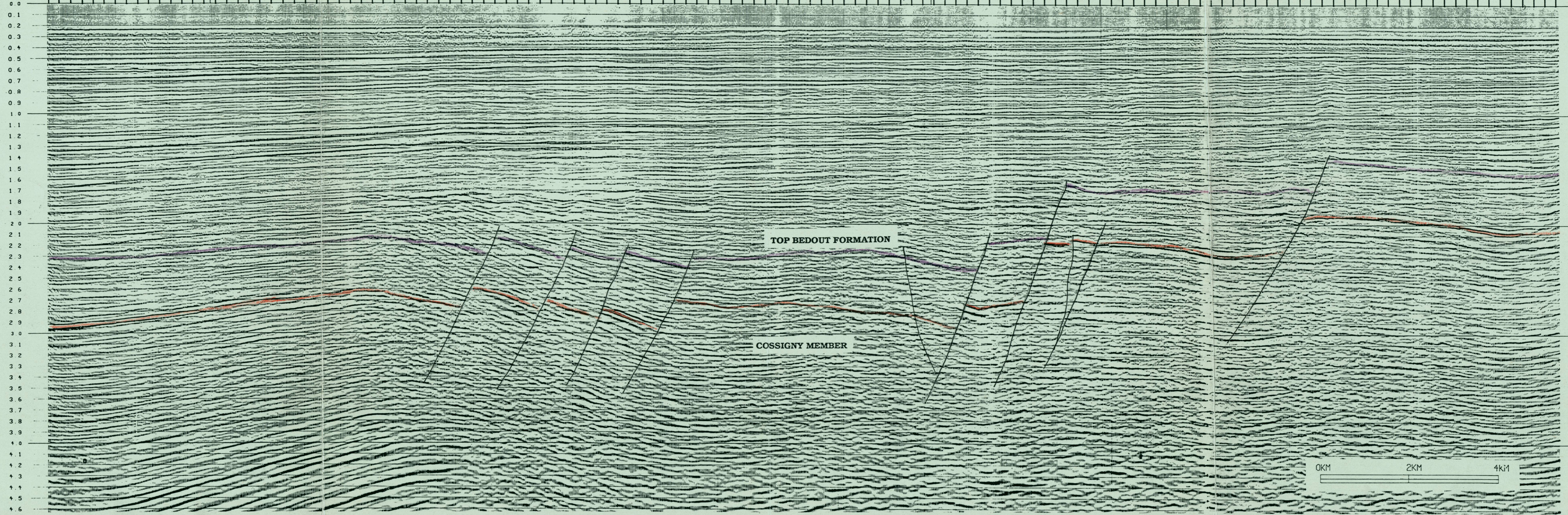
LN 80-4  
SP 66

LINE W81-53

W.D. (METRES)	145	147	147	144	142	141	139	137	136	134	132	128	125	123	121	119	117	115	115	114	115	111	109	107	97	98	98	97	99	100	99	100	100	100	98	W.D. (METRES)
DEPTHPOINT	53	92	132	172	212	252	292	332	372	412	452	492	532	572	612	652	692	732	772	812	852	892	932	972	1012	1052	1092	1132	1172	1212	1252	1292	1332	1372		
SHOTPOINT	1	40	80	120	160	200	240	280	320	360	400	440	480	520	560	600	640	680	720	760	800	840	880	920	960	1000	1040	1080	1120	1160	1200	1240	1280	1320		

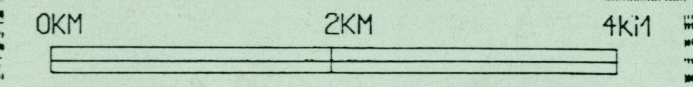
TIME IN SECONDS

TIME IN SECONDS



TOP BEDOUT FORMATION

COSSIGNY MEMBER



095.M  
C467  
C.2



VINTAGE  
XLINES

# LINE B86A - 500

S. P. 494 - 34

69-379  
S P 499 7

74-1313  
S P 41 1

160 DEGREES

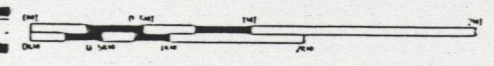
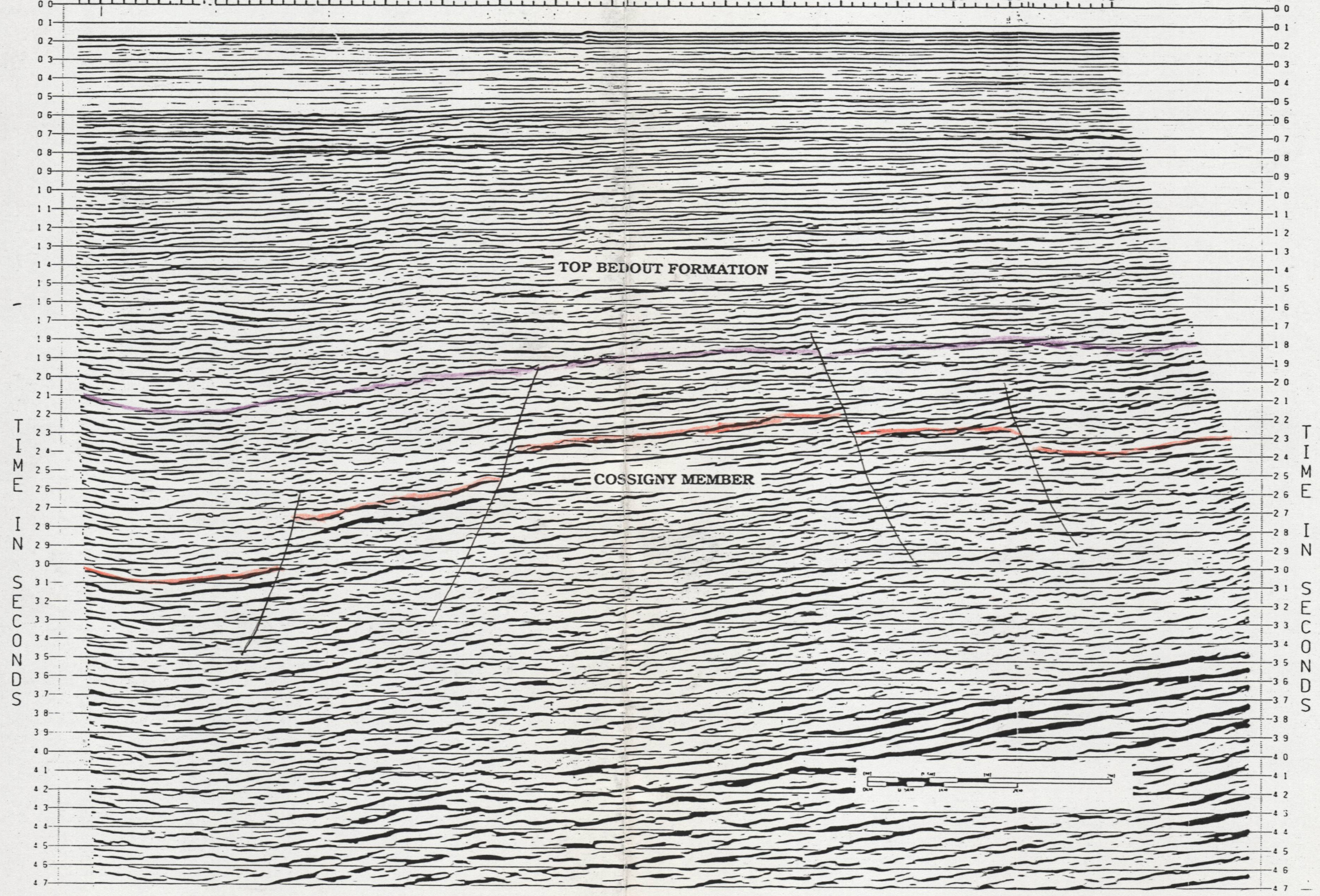
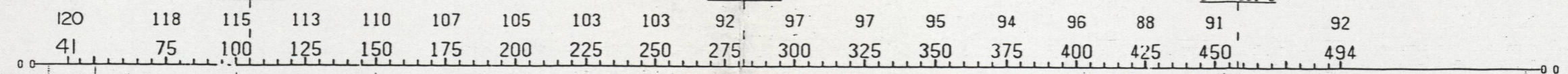
DIRECTION SHOT

X LINES  
SP

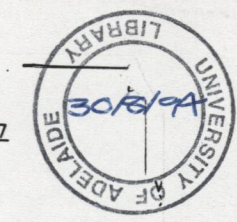
HB86A-501  
S P 24 0

HB86A-503  
S P 116 2

HB86A-507  
S P 581 0



095.M  
C467  
C.2



74-1313  
S.P. 48.3  
69-369  
S.P. 18.4

80-14  
S.P. 124.2  
80-6C  
S.P. 210.2

69-236  
S.P. 84.5  
80-13  
S.P. 84.4

76-1635  
S.P. 51.2

69-232  
S.P. 44.8  
69-237  
S.P. 83.3  
71-614  
S.P. 161.7

80-4  
S.P. 79.1  
76-1636  
S.P. 61.9  
80-12  
S.P. 760.2

69-28A  
S.P. 132.7  
74-1315  
S.P. 73.2

LINE B86A - 503  
S.P. 101 - 1047

63 DEGREES

DIRECTION SHOT

X LINES  
SP

H86A-500  
S.P. 281.7

H86A-502  
S.P. 285.2

H86A-504  
S.P. 288.0

H86A-506  
S.P. 284.8

H86A-508  
S.P. 273.6

H86A-510  
S.P. 268.3

H86A-512  
S.P. 298.6

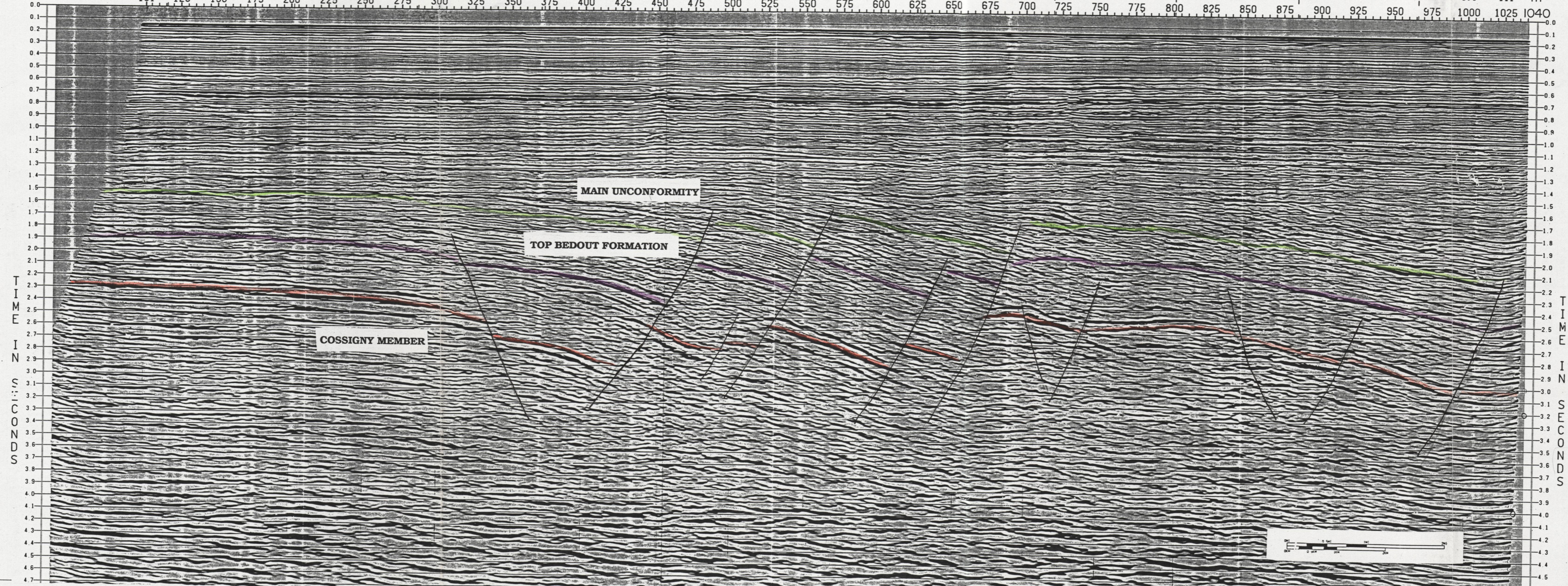
H86A-514  
S.P. 269.1

H86A-516  
S.P. 258.4

H86A-518  
S.P. 263.3

H86A-520  
S.P. 244.4

98 99 99 99 100 100 100 99 99 98 98 98 97 98 99 100 100 102 103 104 104 104 105 106 107 108 108 109 108 109 109 109 109 110 112 110 111 111 111



T  
I  
M  
E  
I  
N  
S  
E  
C  
O  
N  
D  
S

T  
I  
M  
E  
I  
N  
S  
E  
C  
O  
N  
D  
S



095.M  
C 467  
C.2



VINTAGE  
XLINES

**LINE B86A - 507**  
S.P. 101 - 662

69-378  
S P 65 4  
69-368  
S P 148 7

69-369  
S P 44 5

37 DEGREES

DIRECTION SHOT

LINE LL87 - 213

X LINES

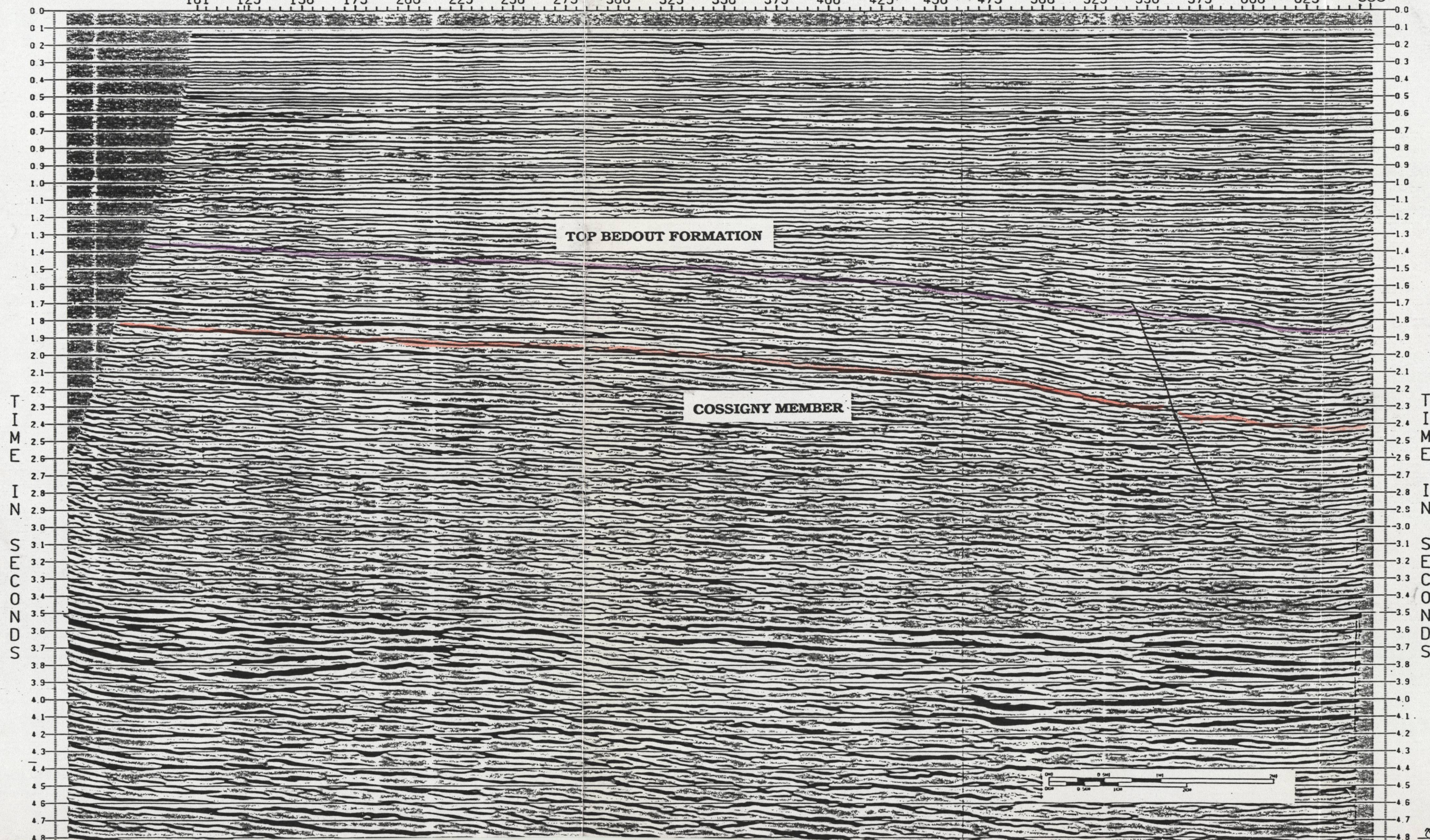
HB86A-114  
S P 163 0

HB86A-500  
S P 458 4

SP

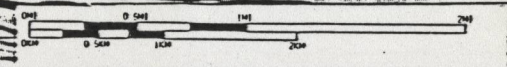
91 90 90 91 90 92 91 90  
101 125 150 175 200 225 250 275

92 93 93 94 94 94 94 93 93 93 92 92 91 93 92  
300 325 350 375 400 425 450 475 500 525 550 575 600 625 655



T  
I  
M  
E  
I  
N  
S  
E  
C  
O  
N  
D  
S

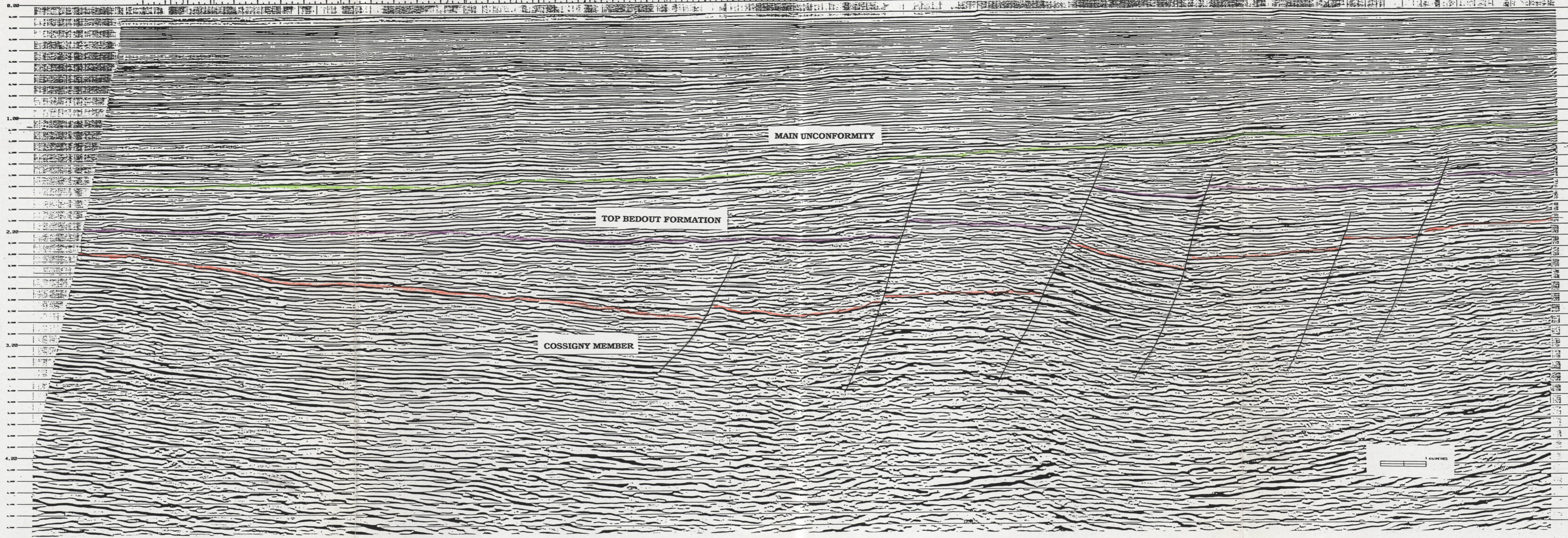
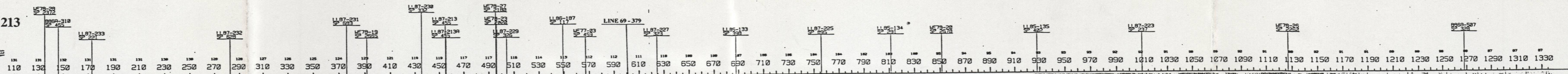
T  
I  
M  
E  
I  
N  
S  
E  
C  
O  
N  
D  
S



095.M  
C 467  
C.2.

LINE LL87 - 213  
S.P. 101 - 1349

DIRECTION SHOT 118.6 DEG  
H.D. N.  
S.P.



095.M  
C467  
C.2

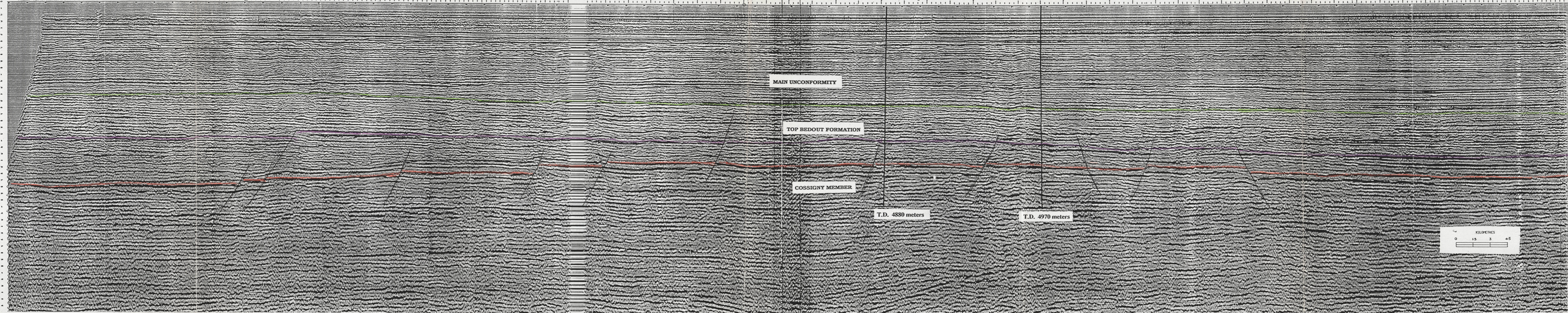
LINE R79-01  
S.P. 337-2323

NORTHEAST

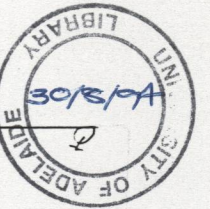
S.P. 337 361 391 421 451 481 511 541 571 601 631 661 691 721 751 781 811 841 871 901 931 961 991 1051 1081 1111 1141 1171 1201 1231 1261 1291 1321 1351 1381 1411 1441 1471 1501 1531 1561 1591 1621 1651 1681 1711 1741 1771 1801 1831 1861 1891 1921 1951 1981 2011 2041 2071 2101 2131 2161 2191 2221 2251 2281 2311 2323

PHOENIX NO. 1

PHOENIX NO. 2



095.M  
C 467  
C.2



# LINE W81-53

S.P. 1-619

8 DEGREES

DIRECTION SHOT

LINE 80-12

LINE 80-05

X LINES  
#  
SP

86 87 87 88 88 88 88 89 89 89 90 90 90 91 91 92 92 92 92 92 93 93 93 92 92 92 92 94 96 102 104 105 107 108 111  
40 80 120 160 200 240 280 320 360 400 440 480 520 560 600 640 687

