

Inside this issue:

Roseworthy Residential College	2
Library Café	3
Student Support & Disability Advisor	4
Student Life Student Care	5
Global IQ—Connect Student H&W	6
Ambassadors Maths Learning Centre Adelaide Graduate Award	
EMS/Work Experience	7
ICMJ Experience	8
Campus Sustainability Plan Launch	9
Student Societies, Associations, and Special Interest Groups: RACSUC AVSA AWAG RAPS CASIG	10-13
Basketball	
Roseworthy Fitness Hub	14
Adelaide University Union (AUU)	15

Diary Dates:

24 Jul—Semester 2 commences
24 -28 Jul—RACSUC's Re-O'Week
27 Jul—Pig Club Pork Quality Tutorial Event
29 Jul—Vet Ball
31 Jul—RACSUC Mental Health Night
2 Aug—AWAG WDA Evening Talk
2 Aug—CASIG IDEXX
3 Aug—CASIG Lunch and Learn
10 Aug—AUU Couch Potato Lunch
14 Aug—Campus Sustainability Launch
17-24 Aug—AVSA Art Expo *Artworthy*
19 Aug—Rural Practice Day
25 Aug—Med Students VS RW Soccer
12-14 Sep—Graduation Ceremonies
14 Sep—R U Ok? Day Events
18-29 Sep—Mid-semester break
1 Oct—Daylight Savings Starts
2 Oct—Labour Day Public Holiday
9-13 Oct—Uni Mental Health Week
1 Dec—Semester 2 Results Due

Critical Dates:

7 Aug—Last day to add courses online
17 Aug—Due date for tuition fees & contributions
31 Aug—Census Date Semester 2
15 Sep—Last day to withdraw without fail
27 Oct—Last day to withdraw fail
4-18 Nov—Exam Period
11-16 Dec—R/AA Exam Period



NEWS FROM THE SAVS Student Services Team

Welcome back! We hope you had an enjoyable break and are ready for Semester 2.

Student Reps

Our School based Committees continue to meet on a regular basis. We have student representatives on many committees so if you have any issues you would like to raise please speak to your relevant student representative.

UniThrive

UniThrive is a fantastic online resource to help you improve your wellbeing, overcome any problems you may be experiencing and boost your performance at Uni. Check it out online here <http://www.adelaide.edu.au/uni-thrive/>

Critical Dates

In the lead-up to Semester 2, please ensure that you are aware of critical dates such as the *Last day to add courses online*, *Census Date* and so forth. Please also take note of the exam periods – Primary and Replacement

(students are required to be available for both). <http://www.adelaide.edu.au/student/dates/critical/2017/>

AEA's

As we are entering a new semester, if any students have AEA's (Alternative Exam Arrangements) please ensure your Course Co-ordinators are aware of this now (not at the end of the semester).

Wishing you all the very best for Semester 2.

School Student Services Team

Email: avs_enquiries@adelaide.edu.au

Calendar



Please email any contributions for the Roseworthy Student Newsletter to Rebecca at

rebecca.dunbar@adelaide.edu.au

Roseworthy Residential College

Roseworthy Residential College Applications for Semester 1, 2018.

- Want to join the Roseworthy community and experience the benefits of living on-campus?
- Want to study, socialise and network with a great group of students?
- Come and join the growing number of students living on campus!

Applications now open

If you have any questions come and visit the Roseworthy Accommodation Service Team in the Student Services Office.

David Purdie, Manager, Student Services (Roseworthy)



College Formal Dinner Term 2 BACK TO SCHOOL





NEWS FROM THE LIBRARY

Library Hours - Semester Times	
Monday—Thursday	8.30am—6.00pm
Friday	8:30am—5:00pm
Saturday/Sunday	CLOSED

The library staff would like to welcome all University staff and students back for a busy Semester 2. Watch this space for future library news.

Discussion rooms

The Library has 4 discussion rooms and a meeting room.

If you would like to book a discussion room or the meeting room in the Library please ask at the Services Desk or phone 83137843.

Book Suggestions

If you would like to suggest an item for inclusion in the library collection simply use the following link - <https://www.adelaide.edu.au/library/about/contacts/suggest/>

Library Tours

New to campus? Or just want to know more about what the library can offer you? Sign up for a Library Tour at the Services Desk or phone 83137843.

Café

The University of Adelaide Club



North Terrace, Adelaide SA 5005
 Phone: +61 8 8303 3077
 Fax: +61 8 8303 6913
 Email: events@adelaide.edu.au



Join us Wednesdays for 'up your Wednesday'. Ask for a small coffee and get automatically up sized to a medium! (Not to be used with any other offer).

We also have re-usable coffee cups for \$10 included is a hot drink of your choice! Please bring in your clean re-usable cup and we will price according to our sizes!

Join our email listings: 'What's for lunch' and "What's for dinner" and always know what the special of the day and dinner is going to be.



Pre-order your lunch and never miss out 8313 7815 (Sandwiches, baguettes etc orders by 10:30am if possible)

For assistance from the café please contact Cath Frankel 8313 7815 or email: roseworthy.cafe@adelaide.edu.au

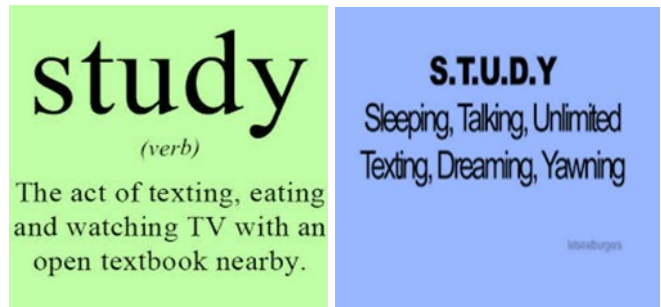
The café is open Monday—Friday during semester from 8:30am to 5pm and 5:30pm-7:30pm for dinners.

Remember...GRAB A PLATE, MATE!



STUDENT SUPPORT AND DISABILITY ADVISOR

IS THIS YOUR DEFINITION OF STUDY?



Welcome back to study for semester 2! I hope you're all feeling re-energised, inspired and ready to take another step closer to achieving your dreams!

As we all know, every semester has its own challenges. It's important that you're, not only prepared to tackle these challenges, but to do it without adding additional stress. Here are some tips you can follow to help you start off on the right foot.

1. **Set realistic goals** – make a plan to achieve success. Success doesn't just happen!
2. **Organise your calendar/diary** – know what's due when, get started early, prepare yourself for the busy weeks and use the quiet times to your advantage. Semester planners are great for getting an overall picture of peak times and quiet times throughout the semester. Come and see us at Student Support Services for a semester planner.
3. **Read your course handbook** - familiarise yourself with what you can expect to learn throughout the semester, and, equally importantly, what will be expected of you.
4. **Go to class** – you may think that you won't miss out on much if you don't go to the first couple of classes - "I won't go, we won't be learning much yet". In the first couple of classes you will find out what's expected of you, what you'll be learning throughout the semester and it's a good chance to get to

know your lecturer/course co-ordinator. Whilst attendance may not be compulsory, they'll also be taking note of who is in their class and if you're there!

5. **Stick to your schedule** – make a plan for the semester and stick to it. Make things a daily habit and you'll get back into the swing of study in no time.
6. **Time to relax** – part of your schedule must include time out for yourself. A guilt free break from study to recharge your batteries and do something you love!
7. **Exercise** – make exercise (even just a walk) part of your routine. Exercising boosts your mood and your energy and helps to keep you fit and healthy!
8. **Be healthy** – aim for 8 hours sleep per night, stay well hydrated, eat a well-balanced diet and rest when you feel like you need it.
9. **Be positive** – if semester 1 didn't go as planned, remember semester 2 is a fresh start...embrace it and do your best! You've got this!



The distance between dreams and reality is called discipline.

lllhetoquote.com



Sally is available for appointments on Monday, Thursday and Fridays.

Appointments can be booked by emailing Sally, contacting Rebecca Dunbar in Student Services in Roseworthy College Hall, or by phone on 8313 7812.

If you have an appointment with Sally please announce your arrival to Student Services staff.

Email: sally.polkinghorne@adelaide.edu.au

Web: www.adelaide.edu.au/student/support/roseworthy

Student Life... find out more

We understand that students manage a range of issues and face many challenges during their time at the University. We're committed to supporting you through these times and to build on your strengths and capacity to ensure you maximise your opportunities whilst at University and beyond.

Our Student Life supports are available to all enrolled students and are aimed at helping you, no matter what the issue or stage of studies you are at.



International Student Support
We're here for you

<http://international.adelaide.edu.au/student-support/>

Safer Campus Community
We're here for you

<http://www.adelaide.edu.au/safercampus/>

Elite Athlete Support
We're here for you

<http://www.adelaide.edu.au/eliteathletes/>

Disability Support
We're here for you

<http://www.adelaide.edu.au/disability/>

Health & Wellbeing

<http://www.adelaide.edu.au/student/health-wellbeing/>

Counselling Support
We're here for you

<http://www.adelaide.edu.au/counselling/>

Student Care



Adelaide
University
Union

Student
Care

Contact Student Care's Education and Welfare Officers for information and appointments by calling 8313 5430 or email studentcare@adelaide.edu.au

Support

Education and Welfare Officers are able to provide advice, support or information on any of the following matters:-

- Information and referral for any issue which affect a student's ability to study
- Academic complaints, grievances and student rights issues
- Accommodation assistance
- Loans and small grants
- Centrelink, tax and legal assistance

Equal Access Grants

Equal Access Grant applications are now open for first year undergraduate students experiencing financial difficulties. These are small grants to assist with some of the initial costs associated with beginning University.

For more information contact Student Care for an interview or to discuss further.

Applications close 31st August 2017

<https://scholarships.adelaide.edu.au/scholarship/ug/all/equal-access-scheme>

Global IQ—Connect

Turn Your Degree into a Global Career

Most cities around the world, and most workplaces are a cosmopolitan mix of people with different cultural and professional backgrounds. Whatever you plan to do with your degree, you will meet and work with people from different countries and backgrounds.

Global IQ - Connect will help you understand the role culture plays in communication and interaction and how activities are often experienced differently by the people involved.



<https://www.adelaide.edu.au/student/global-iq-connect/>

[What is Global IQ - Connect?](#)

[How It Works](#)

[Register](#)

Student Health & Wellbeing Ambassadors

Applications Open

Student Health & Wellbeing Ambassadors Program



<http://www.adelaide.edu.au/student/health-wellbeing/ambassadors/>

- **Communications Support** - help your fellow students by telling them about student health and wellbeing initiatives, and listening to their suggestions for new initiatives
- **Event Support** - help out on events across all three campuses, including Mental Health Awareness Week and University Mental Health Day
- **Resource Development** - help us develop new, or redevelop existing, health and wellbeing resources, including online resources like the Health & Relationships website
- **Project Support** - help out by providing input on a number of student health and wellbeing projects run through Student Life, such as transition workshops and mobile app updates
- Free Certified Mental Health First Aid Training
- Professional Development Opportunities in Events Management, Communication Skills Development, and Resource Design and Development
- Mentoring in Project Management

Maths Learning Centre

The Maths Learning Centre exists to help all students with the maths involved in their coursework, including statistics. Our Drop-In Centre is at the North Terrace Campus on Level 3 of Hub Central and is open even during university breaks – check our website for opening hours. Some questions we may even be able to answer over phone or email, so don't hesitate to contact us.

David from the MLC will be at Roseworthy throughout the year to be part of various classes in your courses. He can also come to run workshops or drop-in sessions if students or staff ask.

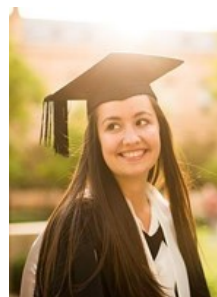
WEB:

www.adelaide.edu.au/mathlearning/resources/roseworthy

EMAIL: mathslearning@adelaide.edu.au

PHONE: 8313 5862

Adelaide Graduate Award



The Adelaide Graduate Award is a free university-wide program to help you to increase your employability by gaining experience, expanding your skills and extending yourself beyond your degree. Through the Award, the University will formally recognise the experiences you have outside of your academic coursework which contribute to your learning, success and employability.

Find out more at

<https://www.adelaide.edu.au/student/adelaide-graduate-award/>

Extra Mural Studies (EMS) / Work Experience



EMS Administration Hours

Please note that the core EMS Administration Hours are Monday – Friday 9:30am – 2:30pm. Staff may be available outside these hours.

Animal Science WORK EXPERIENCE	Veterinary Bioscience & DVM EXTRA MURAL STUDIES
EMS Administration Team animalvetsci@adelaide.edu.au Mandi Simpson & Kat Ingram	EMS Administration Team animalvetsci@adelaide.edu.au Mandi Simpson & Kat Ingram
Dr Karen Kind Animal Science Program Co-ordinator	Dr Wendy Hamood EMS Co-ordinator

Animal Science Work Experience

There will be a new forms for Animal Sciences wishing to undertake work experience. Dr Karen Kind and Kat Ingram will be running some information sessions for Animal Science students early in Semester 2. Details will be emailed to students.

Who should I contact?

The EMS Administration Team (Mandi Simpson & Kat Ingram) should be Animal Science students' first point of call as Mandi and Kat will be managing the actual placements and associated paperwork and will gain approval from Dr Kind.

Dr Karen Kind is the Bachelor of Science (Animal Science) Program Co-ordinator and approves Animal Science student placements organised through the School.

Extra Mural Studies

AHEMS Bachelor of Science (Veterinary Bioscience)

If Veterinary Bioscience students wish to attend a placement 18th – 29th September they need to go to [Sonia Online](#), Forms tab, Select "AHEMS Placement Preference Form - SEPTEMBER 2017 VACATION 3" and click 'Add'. Students can join the relevant species specific placement groups to view available sites which can assist in completing the form. Please ensure you 'Submit' the form by the due date. Students will be emailed when the September Placement Preference form is available.

JULY Vacation Period	Due Date
Complete <i>Student Assessment of Placement (SAP)</i>	4 th August 2017
SEPTEMBER Vacation Period	Due Date
Submit <i>Placement Preference Form – SEPT 2017 VACATION 3</i>	31 st July 2017
Complete <i>AHEMS Complete Student Placement Agreement</i>	18 th August 2017

DVM EMS Doctor of Veterinary Medicine)

Doctor of Veterinary Medicine students go to [Sonia Online](#), Forms tab, Select "DVM EMS Placement Request Form" and click 'Add' - please do not attached this form to the Placement Group or to the specific site. DVM students should complete this form once they have already contacted the site and they have agreed to host them. Please ensure you 'Submit' the form by the due date. Students can view "DVM Placement Allocation List" through the 'Details' tab in this year Placement Group "DVM EMS MARCH 2017 TO FEBRUARY 2018" in Sonia Online.

JULY Vacation Period	Due Date
Complete <i>Student Assessment of Placement (SAP)</i>	28 th July 2017
SEPTEMBER Vacation Period	Due Date
Submit <i>DVM Placement Request Form</i>	24 th July 2017
Complete <i>DVM Complete Student Placement Agreement</i>	21 st August 2017

EMS Vacation Periods 2017

Critical Dates

Please check the **Calendar** in Sonia for critical dates. EMS Placements take place in the University Vacation Periods. The dates for 2017 are:

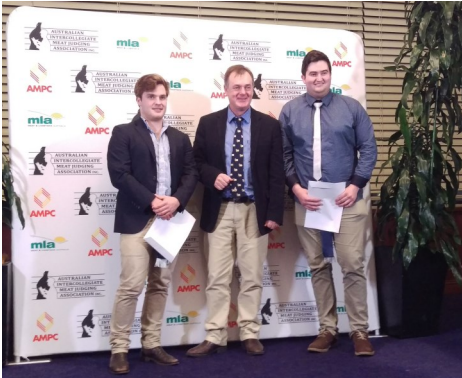
Vacation Period 3: (18 Sep—29 Sep)

Vacation Period 4: (20 Nov 2017—23 Feb 2018)

Any Enquiries please contact the EMS Admin Team at animalvetsci@adelaide.edu.au

Stock Journal—Great ICMJ experience for Uni of Adelaide students

Article written by Catherine Miller
10 Jul 2017 for the Stock Journal



Two University of Adelaide students have brought home awards from the Intercollegiate Meat Judging Competition at Wagga Wagga, NSW, last week.

Luke Ramsay, Warooka, won a Sheep Meat Council of Australia scholarship valued at \$2000 towards travel and accommodation costs for an industry placement.

Fellow YP student Matthew Cadd, Agiary, was the coach's pick for his enthusiasm and will travel to Qld with the top 10 team later this year.

University of Adelaide coach Emily Buddle was proud of the 14 SA students who competed among more than 130 students from Australia, the United States, South Korea, Japan and Indonesia.

Each entrant judged beef, lamb and pork carcasses and cuts for the chance to represent Australia in the US.

"The competition was fierce this year but I was really impressed with the marks coming through from the students and their dedication," she said.

The team, comprising Agricultural Science, Animal Science and Veterinary Science students, has spent the past four months training on small stock at Holco, Cavan and beef at Thomas Foods International, Murray Bridge.

During the mid semester break the team broadened their paddock to plate knowledge with a three-day tour including Big River Pork at Murray Bridge, Iranda feedlot at Tintinara, JBS Bordertown abattoir, Thornby Lamb



feedlot, Sanderston and Lancaster Simmentals, Meningie.

Hahndorf butcher Max Noske & Sons and Prime Valley Pastoral, Two Wells also hosted sessions, before final preparations with tafeSA Regency Campus lecturer Graeme Elliott.

"It is about the meat judging but we want to expose them to all facets of the SA industry and emphasise where each part fits in the meat puzzle and what each part of the supply chain are doing to meet the market," Ms Buddle said.

The University of Adelaide strengthened its relationship with Indonesia's Bogor Agricultural University hosting five students for the competition.



Campus Sustainability Plan



Your Invitation

Campus Sustainability Plan – Roseworthy Launch event

The University of Adelaide invites you to the launch of our new **Campus Sustainability Plan**. The \$14.4m Plan outlines our commitment to sustainability over the next four years in relation to carbon reduction, water efficiency, investment and procurement, training and engagement.

Join Chief Operating Officer, Bruce Lines, to recognise those who have contributed to the Plan, and to celebrate what is to come.

[Tuesday 15 August, 12pm-1pm – Council Room, Main Hall, Roseworthy campus](#)

12.00pm: Light lunch and beverages

12.15pm: Official Launch by Bruce Lines and speeches by key Infrastructure staff

[Please RSVP here](#), as numbers are limited.

Student Associations, Societies and Special Interest Groups

For more information about Student Associations, Societies and Special Interest Groups within the School of Animal and Veterinary Sciences visit

www.adelaide.edu.au/vetsci/current-students/associations/

Many clubs are part of the **AUU's Clubs Association**. www.aau.org.au

Many Student Associations and Special Interest Groups have their own **websites** and **facebook** pages. Watch for more events posted on Facebook pages and the **Online Calendar** as semester unfolds.

<http://www.adelaide.edu.au/vetsci/news-events/>

Check out the **Rosi Campus Facebook** page (administered by students).

Apply to see this feed by searching 'Roseworthy campus' or visit www.facebook.com/groups/500752649960619/



RACSUC—Roseworthy Agricultural College Student Union Council

Welcome back to Semester 2 from all the RACSUC committee!

At the end of last semester RACSUC and the Agricultural Students Association hosted the Technology in Agricultural Field day to showcase new developments in agriculture to farmers and the wider community. This day proved to be a success with some great products on show.

RACSUC has some exciting events planned for the start of next semester with the annual Re-O'Week coming up from the 24th to the 28th of July. The week kicks off with the Roseworthy College Party and bonfire night to welcome us all back to Uni after break on Monday and everyone is invited to wear the Roseworthy colours of black and pink with pride. The highlight of the whole week will be the much anticipated Hens and Bucks night on Wednesday. This year we are running a competition for residents to pick the Hen and the Buck for the night by submitting a proposal video to the RACSUC committee. Make sure to check out the event page on Facebook for an outstanding example of what we'd like to see! The week is sure to be a good one and we can't wait to see you all there!

On a more serious note, on the 31st of July RACSUC and the Student Services Office will be running a Mental Health night free for all students to attend. There will be a couple of speakers on the night, including a Beyond Blue speaker and an ex-student to give us some insight into mental health and how it relates to all of us on campus. These guys will have some great information for us all so we definitely recommend marking it down in your calendars and coming along.

Remember to make use of the RACSUC recycling bottle bins and send any feedback at all about events or ideas to racsuc@adelaide.edu.au

- RACSUC

Roseworthy
Agricultural College



Student Union Council

MENTAL HEALTH NIGHT

With special guests including a beyond blue ambassador and an ex-student of Roseworthy

WHEN: Monday 7pm 31st of July
WHERE: Conference rooms in hub
WHO: Everyone is invited!
COST: FREE!
Coffee, tea and biscuits provided

AVSA—Adelaide Veterinary Students Association

Welcome back for semester two!

Although it didn't snow in Roseworthy, students celebrated Christmas a little earlier in the year at our Christmas in June party! Plenty of egg nog was consumed, cheesy family photos snapped and the ugliest of sweaters worn.

Our underwater themed Vet Ball is just around the corner – more specifically this Saturday (29th July). More details can be found below.

Time to dust off your easel, charge up your camera and sharpen your pencils as entries for our inaugural art and photography exhibition are now being accepted. *Artworthy – From Paddock to Painting* is open to all students and staff of Roseworthy campus to help support mental health through promoting a healthy hobby. Entry forms can be found attached to the most recently sent AVSA email and are open until Tuesday 8th August 5PM. An exhibition opening night will be held on 17th August with prizes sponsored and awarded by the AVA. We look forward to seeing the creative side of Roseworthy!

Vet Ball

Date: Saturday 29th July

Venue: The Hilton, Adelaide CBD

Time: 7PM-12AM

Artworthy Exhibition

Opening Night: Thursday 17th August at 7:30PM

Exhibition: 17th-24th August

Venue: The Hub, Roseworthy Campus

Cost of Entry: FREE

Entry Form/Information: AVSA email sent on 10/7/17

- AVSA Committee 2017

Want to get involved with AVSA?

Email: avsas@uuu.org.au

Facebook:

<https://www.facebook.com/avsas.uofa>



ARTWORTHY

FROM PADDOCK TO PAINTING



Inaugural Roseworthy Art and Photography Exhibition 2017

Supporting the mental health of staff and students through the promotion of a healthy hobby

Opening Night on Thursday 17th August at 7:30PM
Exhibition held 17th-24th August

The Hub, Roseworthy Campus

Kindly sponsored by



Adapted from Theresa Pader

AWAG—Adelaide Wildlife Appreciation Special Interest Group

AWAG is getting off to an early start this term with our WDA winter warmer evening on Wednesday the 2nd of August where you can come and co-op up in the vet tute rooms with some soup and learn about an amazing group; the Wildlife Disease Association.

We will have several speakers including Anne Fowler who will be talking about their experiences with the WDA and it's conferences. In regards to the

conference applications are still open until Friday the 28th of July for grants to attend this year's conference in Fall's Creek, Victoria.

Later in the term we will be having our famous Wine and Cheese night with various wildlife experts talking about their work.

We will also be having some more lunch and learns throughout the semester



Want to get involved with AWAG?

If you would like to get involved with AWAG flick us an email at awag@auclubs.com.au

Open to all Roseworthy students!



RAPS—Roseworthy Animal Science & Postgraduate Students Society



A Message From RAPS

Welcome back everyone! Hope you've all had a refreshing break and are ready for the second half of the year. We hope that the RAPS Study Centre was helpful for students and you were

able to ace your exams. Hopefully the coffee and snacks helped too! RAPS will be holding some events later in the semester so keep an eye out for updates from us.

Last month RAPS assisted with the School of Animal and Veterinary Sciences 3 Minute Thesis Day. Honours students, PhDs and academics participated and gave a talk about their research in 3 minutes or less. It's not the easiest task making a clear and interesting talk about a project in under 3 minutes but everyone did a great job and made it an enjoyable and entertaining day. RAPS would like to thank all of the honours and PhD students that assisted in marking the talks and congratulate the following winners;

Honours RAPS award: Curtis Villani

Pre-Confirmation RAPS award:
Tahlia Moyle

Post-Confirmation RAPS award:
Vanessa Tamlin

Academic RAPS "Hip-Hop" award:
Cindy Bottema

Want to get involved with RAPS?

raps@auu.org.au

www.facebook.com/UofARAPS/

President - Simon Pols

simon.pols@adelaide.edu.au

Vice President- Mandy Bowling

mandy.bowling@adelaide.edu.au

CASIG-Companion Animal Special Interest Group

CASIG has lots of exciting events this semester! In week 2 alone, we have a laboratory workshop with a representative from IDEXX going through several mixed practice case studies, AND a lunch and learn with international pharmaceutical company Boehringer. We're also sending one lucky CASIG member to the 2017 FASAVA (Federation of Asian Small Animal Veterinary Associations) Conference in Brisbane. Later in the semester we will have a pet first aid day, suture kits for sale, a big charity fundraiser event, plenty of more lunch and learns, and of course our cocktail night! If you want free/discounted entry

to these fantastic events new members are still welcome for just \$10. We hope to see you soon!

Want to get involved with CASIG?

For more information, we can be contacted at

casig.adelaide@gmail.com

or visit our website

<http://casiguofa.wixsite.com/casig>



Basketball

The season has ended very well for the Panthers, Ramrods and Roseworthy basketball teams finishing up in 2nd, 3rd and 5th place respectively in terms of win percentage. Congratulations must be given to The Panthers for making it into the finals thanks to the efforts of Wesley, Dany, Peter, Daniel, Tom and Angus as well as a few fill-ins along the way. The semi-finals was held on 18th July and the finals will be held on the 25th July, hopefully we can make it through and get a big win for the campus!

At this stage of the year we start looking towards the next season of basketball which will be starting up in the first couple weeks of Semester 2. In preparation for the new season the club has invested in some brand-new equipment which everyone is very excited to break in. We'll be training harder than ever on Monday nights in order to lift the game of every single player in the club.

As always, anyone who's interested in playing basketball is welcome to join us on Monday nights from 5:00pm for training or contact Daniel McGilp, Dany Elzahaby or Wesley Halse about joining the club. Games are played on Tuesday nights any time from 7:30-9pm and spectators are always encouraged to come along and support the players.



Tuesday Men Basketball 27.06.17

DIVISION 1

TEAM	GP	W	L/B	DRAW	WIN %	PTS/F	PTS/A	%	PTS
THE OTHER GUYS	19	14	5	0	73.7%	966	637	151.6%	47
GANG GREEN	19	13	6	0	68.4%	812	574	141.5%	45
MOONSHINERS	19	13	6	0	68.4%	781	589	132.6%	45
RED LIONS	19	10	9	0	52.6%	616	601	102.5%	39
C-MO ALLSTARS	18	10	8	0	55.6%	750	689	108.9%	38
WOLVES	19	8	10	1	42.1%	665	759	87.6%	36
DONKEYS	19	6	13	0	31.6%	670	877	76.4%	31
DRAGONBALLERZ	19	5	13	1	26.3%	712	832	85.6%	30
OUTLAWZ	18	2	16	0	11.1%	677	735	92.1%	22

DIVISION 2

TEAM	GP	W	L/B	DRAW	WIN %	PTS/F	PTS/A	%	PTS
TZK	19	12	6	1	63.2%	807	671	120.3%	44
X-MEN	19	10	8	1	52.6%	731	596	122.7%	40
PANTHERS	14	8	5	1	57.1%	512	418	122.5%	31
THE BLUE GOATS	19	3	15	1	15.8%	547	699	78.3%	26
ROSEWORTHY	12	6	6	0	50.0%	266	325	81.8%	24
RAMRODS	11	6	5	0	54.5%	355	375	94.7%	23
PROFF DOCTORS	14	4	10	0	28.6%	416	615	67.6%	22
THE DANKWATERS	12	2	10	0	16.7%	315	510	61.8%	16



WELCOME TO THE FITNESS HUB ROSEWORTHY



OPENING HOURS
MONDAY—SUNDAY
6AM—11PM

STAFFED HOURS
MONDAY & WEDNESDAY 5PM—8PM
FRIDAY 4PM—8PM



PUNCHFIT



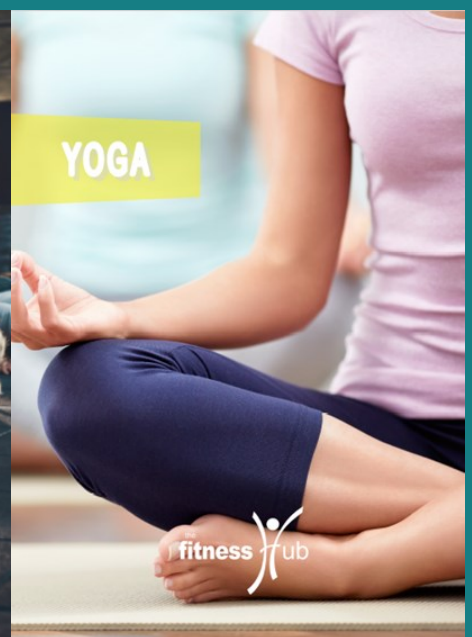
PUNCHFIT – Monday's @ 6.30pm



HIIT



HIIT – Wednesday's @ 5.30pm



YOGA



YOGA – Thursday's @ 7.30am

Casual class visits are \$6.50
or **FREE** with an All Access membership.
To book in or to make an enquiry email
thefitnesshubroseworthy@gmail.com
Or 83136999

REFER A FRIEND

WHO JOINS AND RECEIVE A FREE MONTH*

P 8313 6999

E thefitnesshub@adelaide.edu.au



@FitnessHubAU | www.thefitnesshub.com.au





Beanie & Scarf Bundle \$29

• 1 x knit beanie & 1 x Knit Scarf*no further discount applies

special ends 28th July



Couch Potato

August 10 • 11:30 - 1:30pm

Union Lawns

Free hot potato & drink for Union Members

\$6 for non-members

Registrations essential
couchpotato.eventbrite.com



SCAVENGER HUNT

Download • Play • Win

Game finishes
4 August





Student Associations, Societies and Special Interest Groups

Roseworthy Old Collegians Association (ROCA)

The oldest alumni group associated with Roseworthy Campus (est. 1898)



What is ROCA?

Roseworthy Old Collegians Association Incorporated (ROCA) is a University of Adelaide Alumni focused on the Roseworthy Campus. The association provides an on-going network for those who have been associated with the campus since Roseworthy was established as Australia's first agricultural college in 1883. ROCA provides a social and professional network for its members, and encourages discussion about matters relevant to the focus of the campus over time, including all primary industries and natural resources, viticulture and oenology, livestock industries, veterinary science and agriculture.

Our motto: *“Celebrating the past & promoting the future of the Roseworthy campus”*

Who can be a member?

Membership is free to anyone who has lived on the campus, studied there or been a staff member for at least one academic year. We currently have over 2000 members!

Why join ROCA?

Aside from access to an invaluable social and professional network, ROCA also offers:

- Discounted wines
- Student Scholarships
- Roseworthy Sporting Club Reunions
- Annual Regional Reunions (South East, Riverland, Mid North, West Coast)
- ROCA Annual Ball
- Biannual ROCA Digest (newsletter)
 - Wine deals
 - Roseworthy collegian interviews and biographies
 - Event summaries
 - Upcoming events

A message from our most recent committee recruit:

“I joined ROCA after finding some information regarding the association online when researching the history of Roseworthy Campus and finding the group on Facebook. I graduated from Roseworthy in 2010 with a degree in Animal Science and can truly say the Roseworthy experience was the best three years of my life, so I wanted to keep that affiliation going. Unfortunately, due to clashes with my veterinary degree studies interstate, I was unable to partake in any events. Thus, my first ROCA experience was a Mid North reunion in September 2016 upon my return to SA after completing my veterinary degree. It is here that I met many committee members and alumni at O’Leary Walker Wines in Clare (owned and run by Roseworthy graduates). From this reunion I obtained a valuable foundation of networks. I immediately had people networking to source veterinary positions for me in rural practice throughout Australia, and though I found a job of my own accord, the committee networked further to aid in finding me accommodation, in which I now happily reside. It was at this reunion that I was also recruited to join the committee. I can honestly say what a fantastic bunch of people are on the committee and in the association. A stellar amount of effort goes into preserving the historical alumni association and indeed the integrity and history of Roseworthy campus.”

Jess van de Weyer

For more information and to connect with us, please visit:

University of Adelaide website: <http://www.adelaide.edu.au/roca/>

Facebook: <https://www.facebook.com/rocagrads/>

LinkedIn: <https://au.linkedin.com/company/roseworthy-old-collegians-association>

Or contact us at: roca@alumni.adelaide.edu.au