



THE SEDIMENTOLOGY AND STRATIGRAPHY OF THE  
LATE PRECAMBRIAN POUND SUBGROUP,  
CENTRAL FLINDERS RANGES,  
SOUTH AUSTRALIA

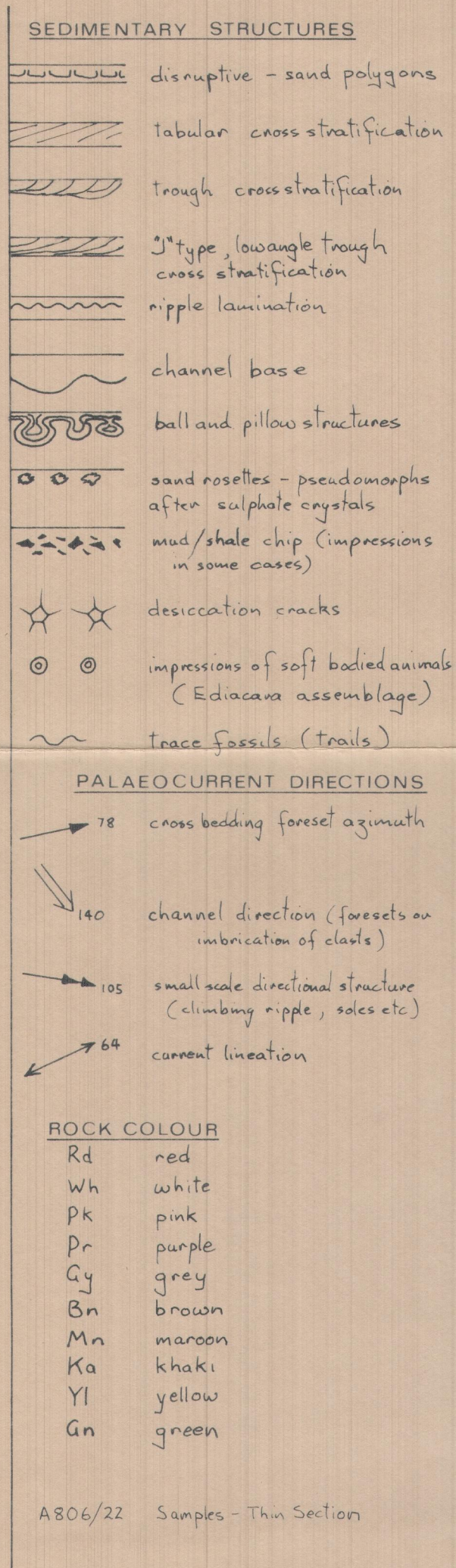
by

JAMES G. GEHLING, B.Sc.(Hons)

Submitted for the Degree of M.Sc. through the Department  
of Geology and Mineralogy, University of Adelaide,  
July, 1982.

# LEGEND

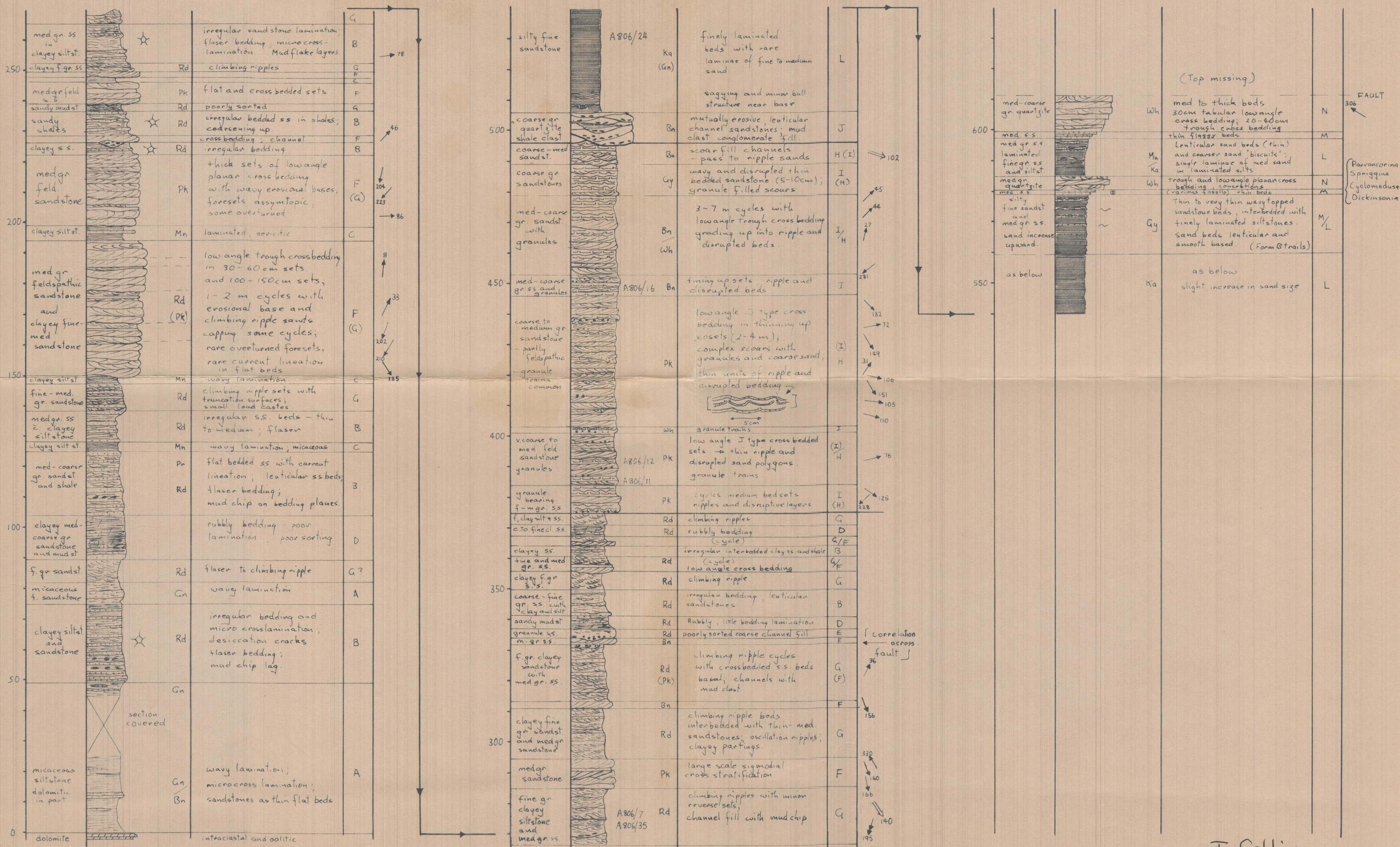
# FIG. I



J. G. 82.

# SECTION 1 MAYO GORGE

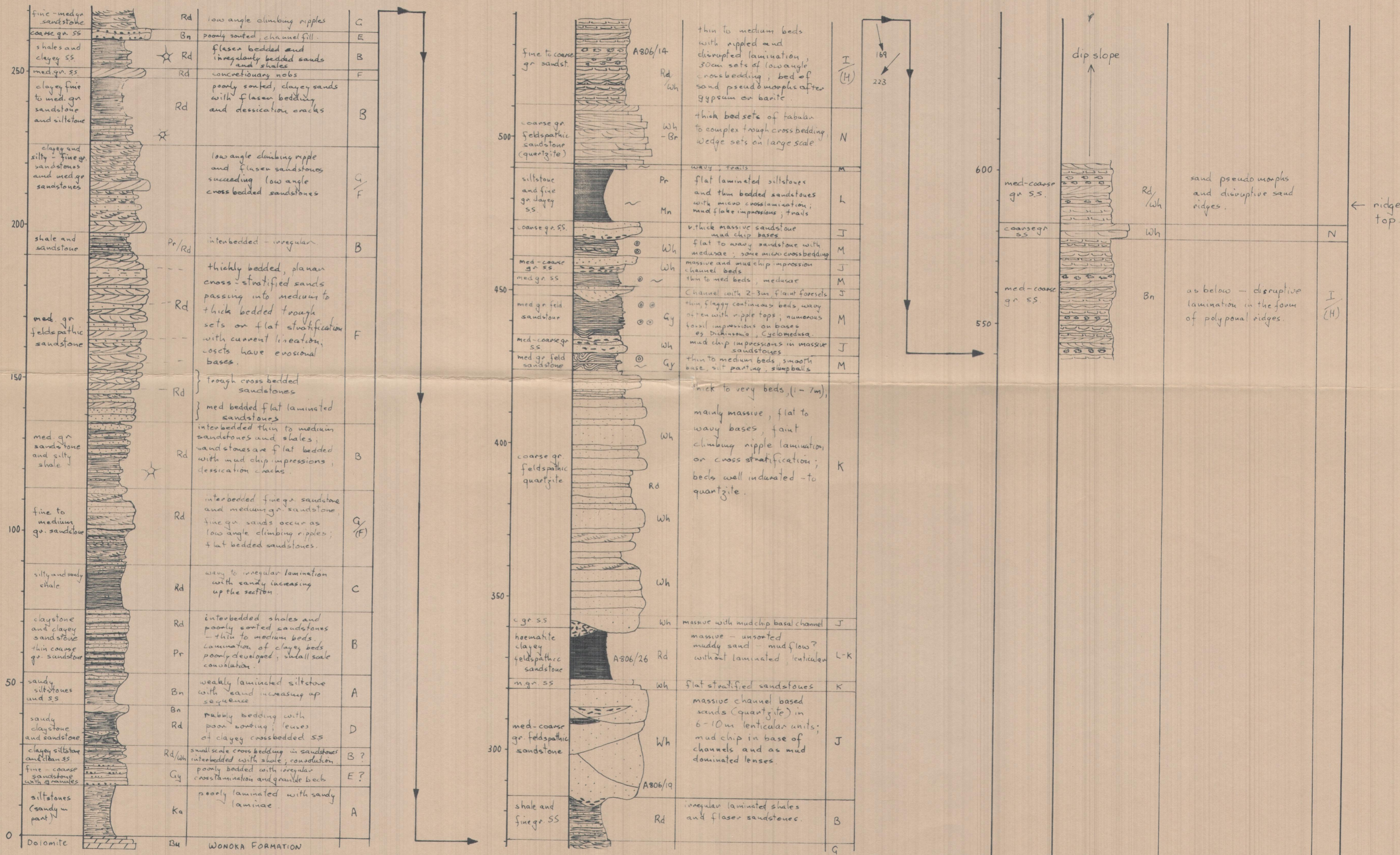
## FIG. II



J. Gehling, '82.

# SECTION 5 NTH.MT. ALECK

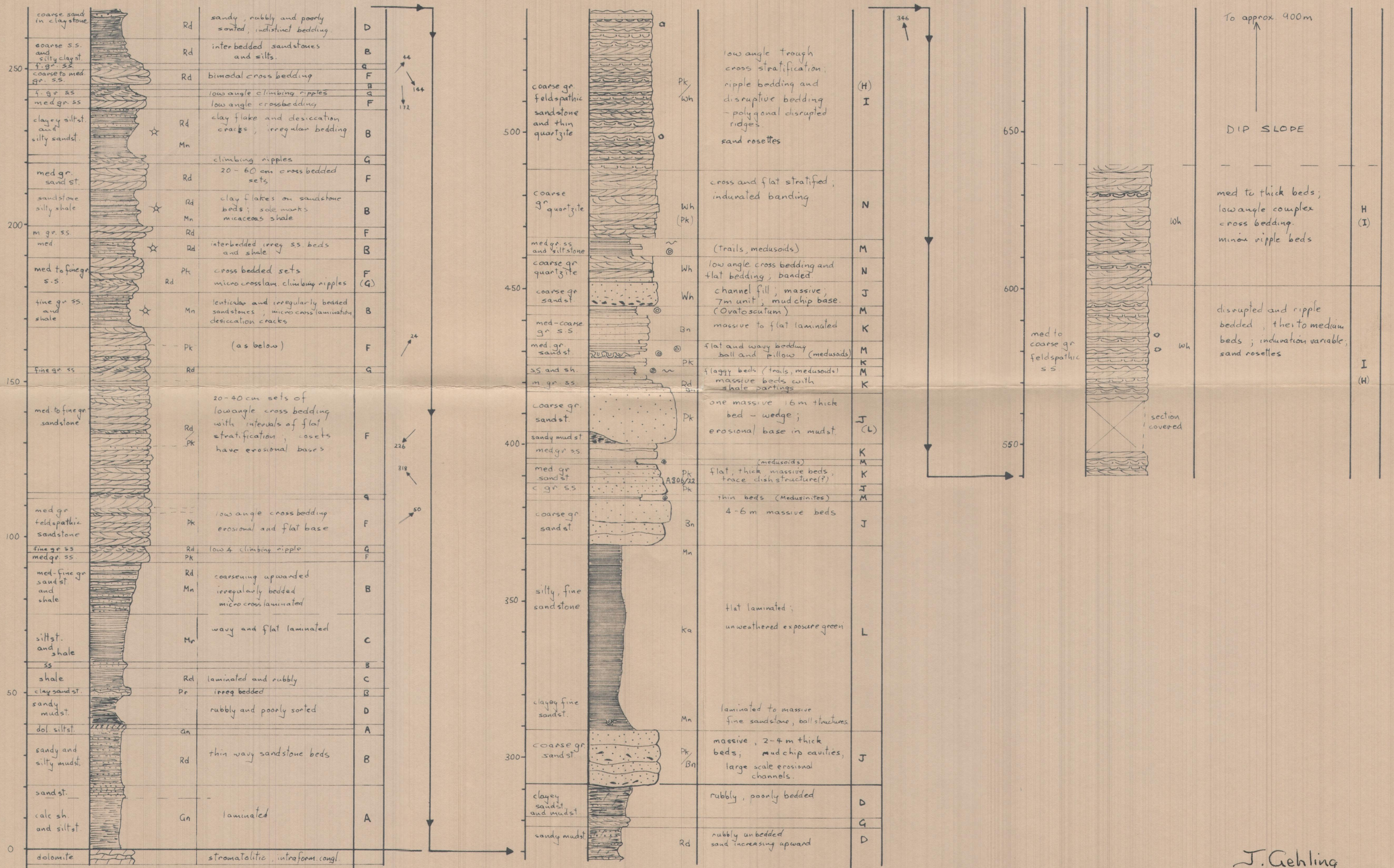
FIG. III



J. Gehling '82.

# SECTION 7 BEATRICE HILL

## FIG. IV

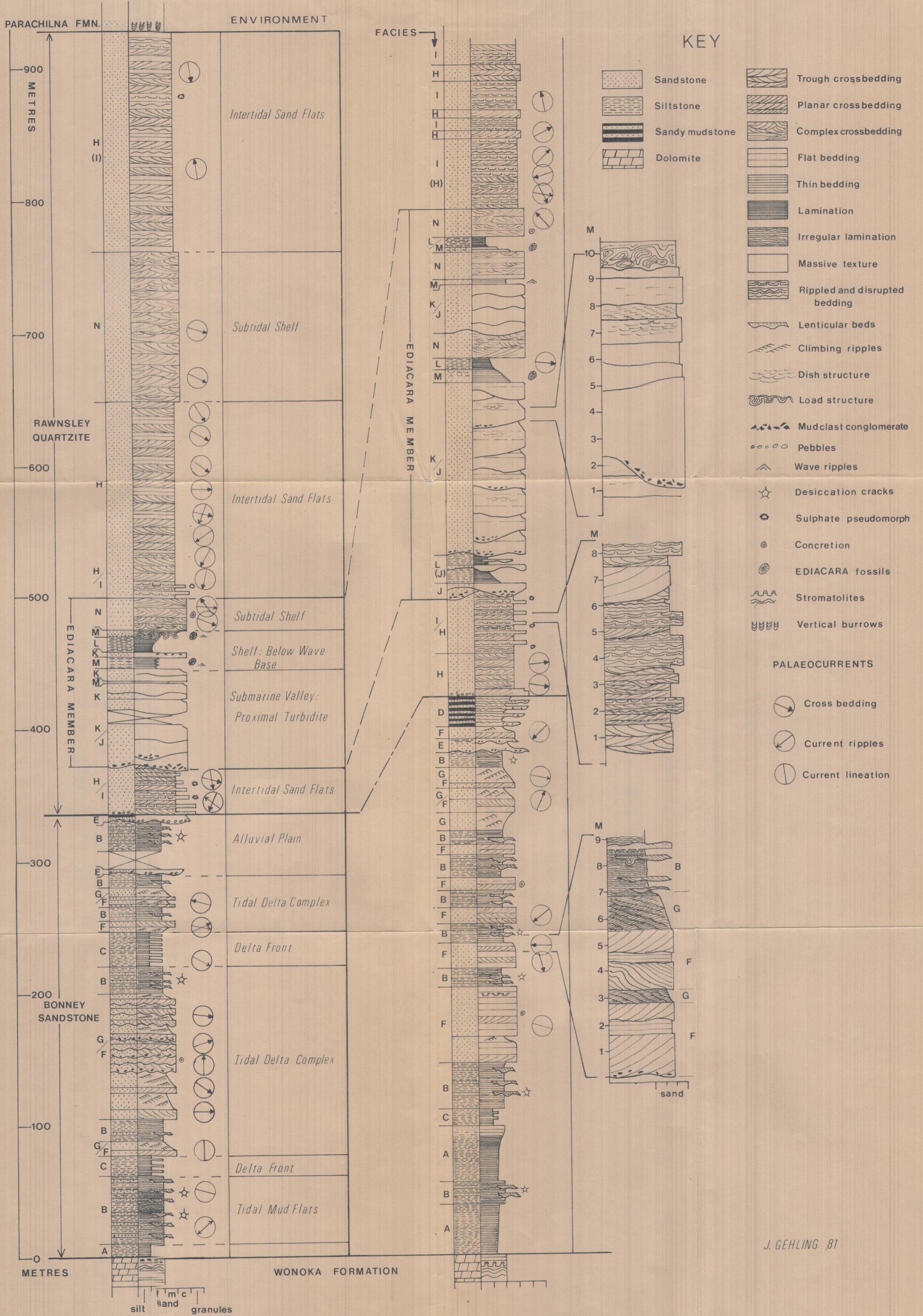


J. Gehling  
82.

Section 20 BRACHINA GORGE

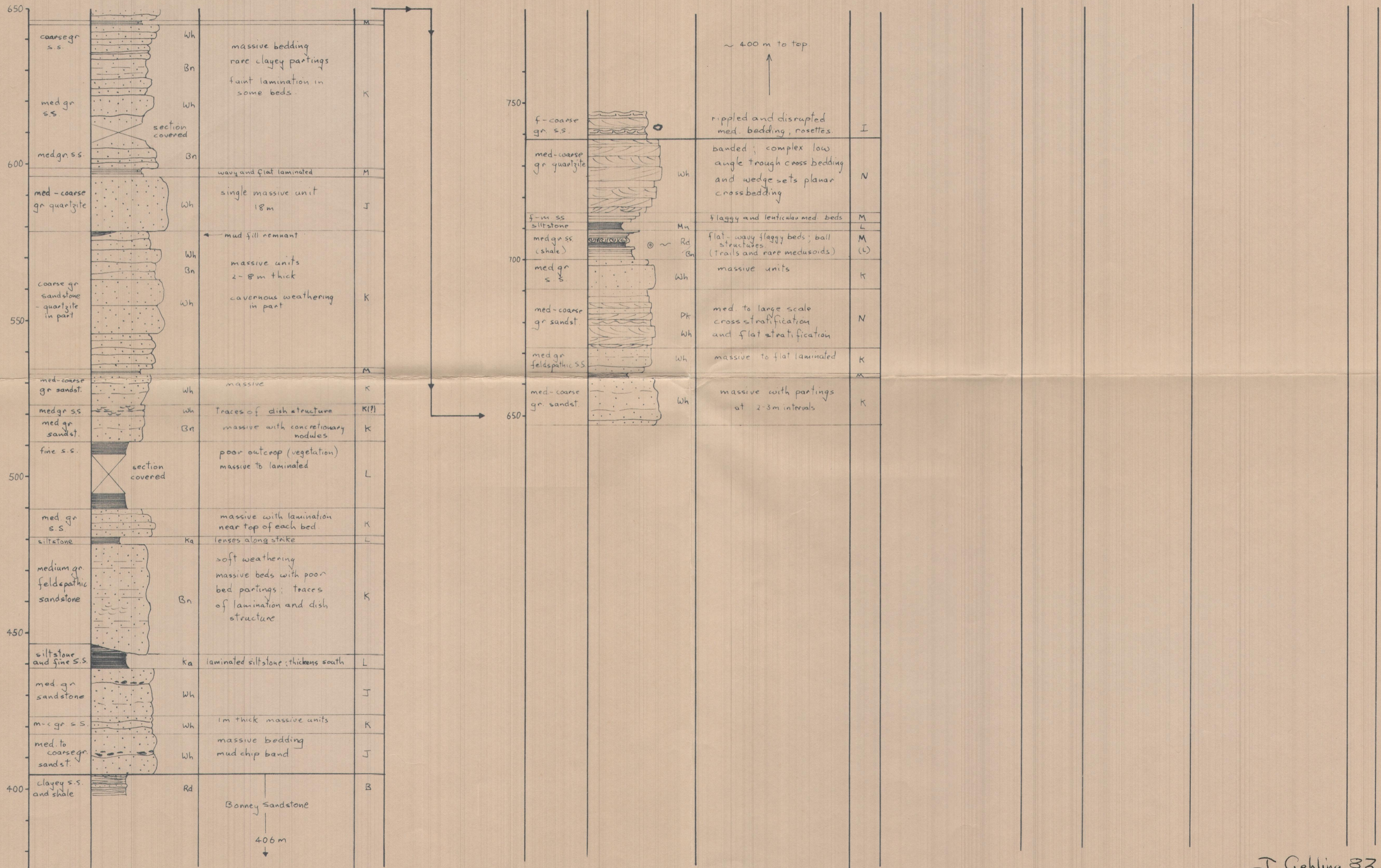
Section 11 CHACE RANGE

FIG. 4



# SECTION 16 TUMBURRU PEAK (WILPENA POUND)

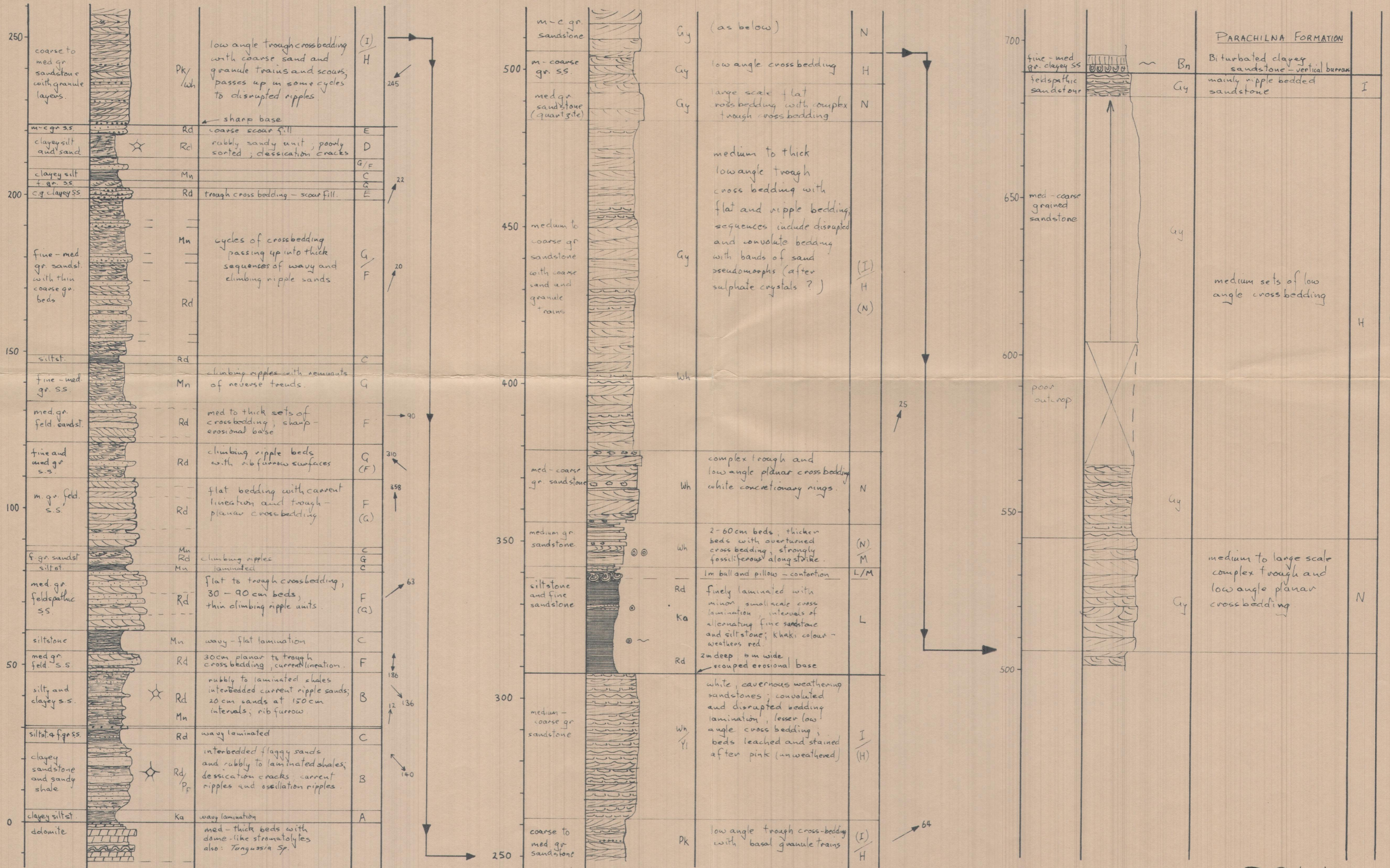
FIG. V



# SECTION 18

# BUNYEROO GORGE

# FIG. VI



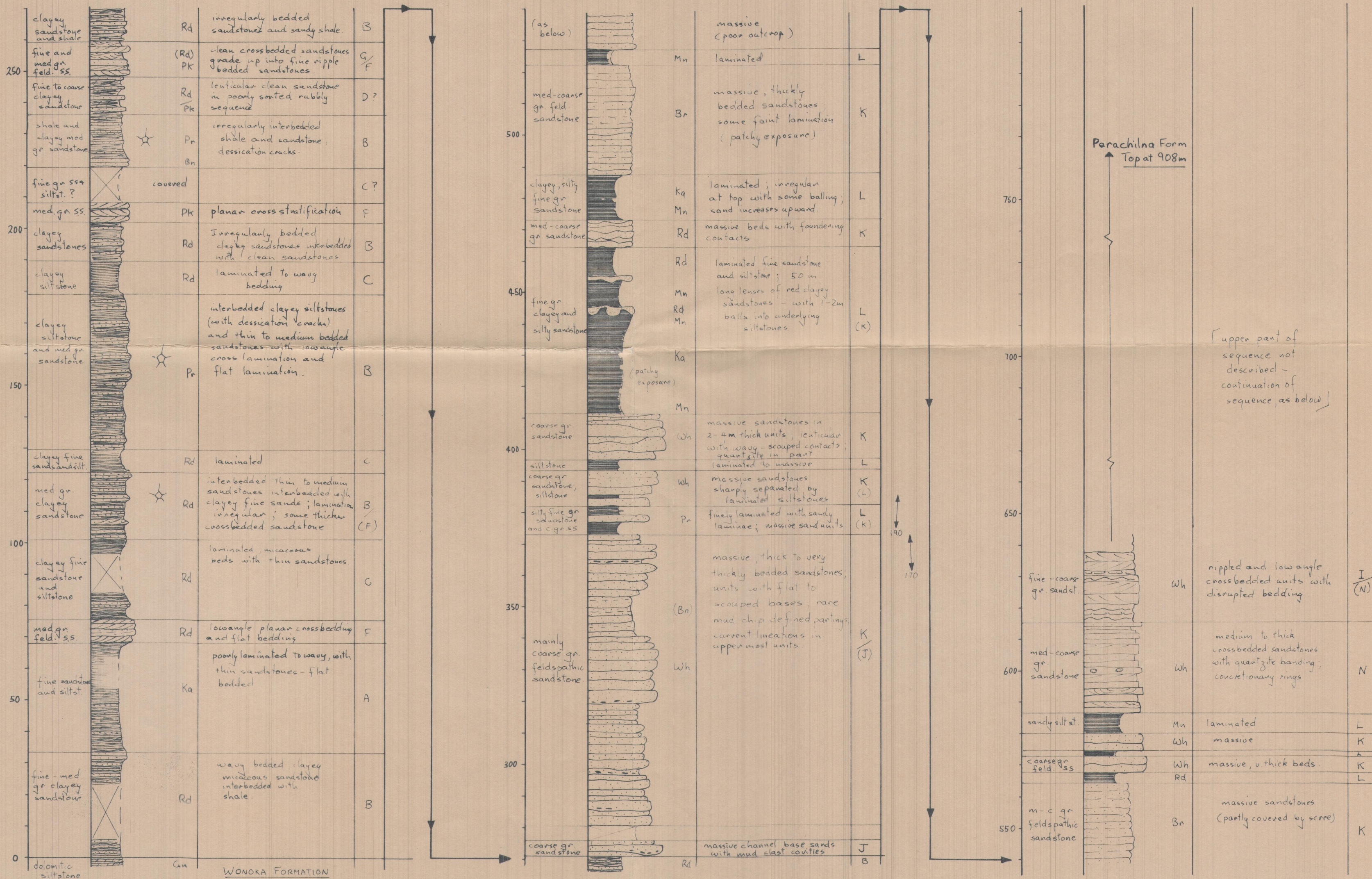
J. Gehling  
82.





# SECTION 32 EAST DRUID RANGE

## FIG. VIII

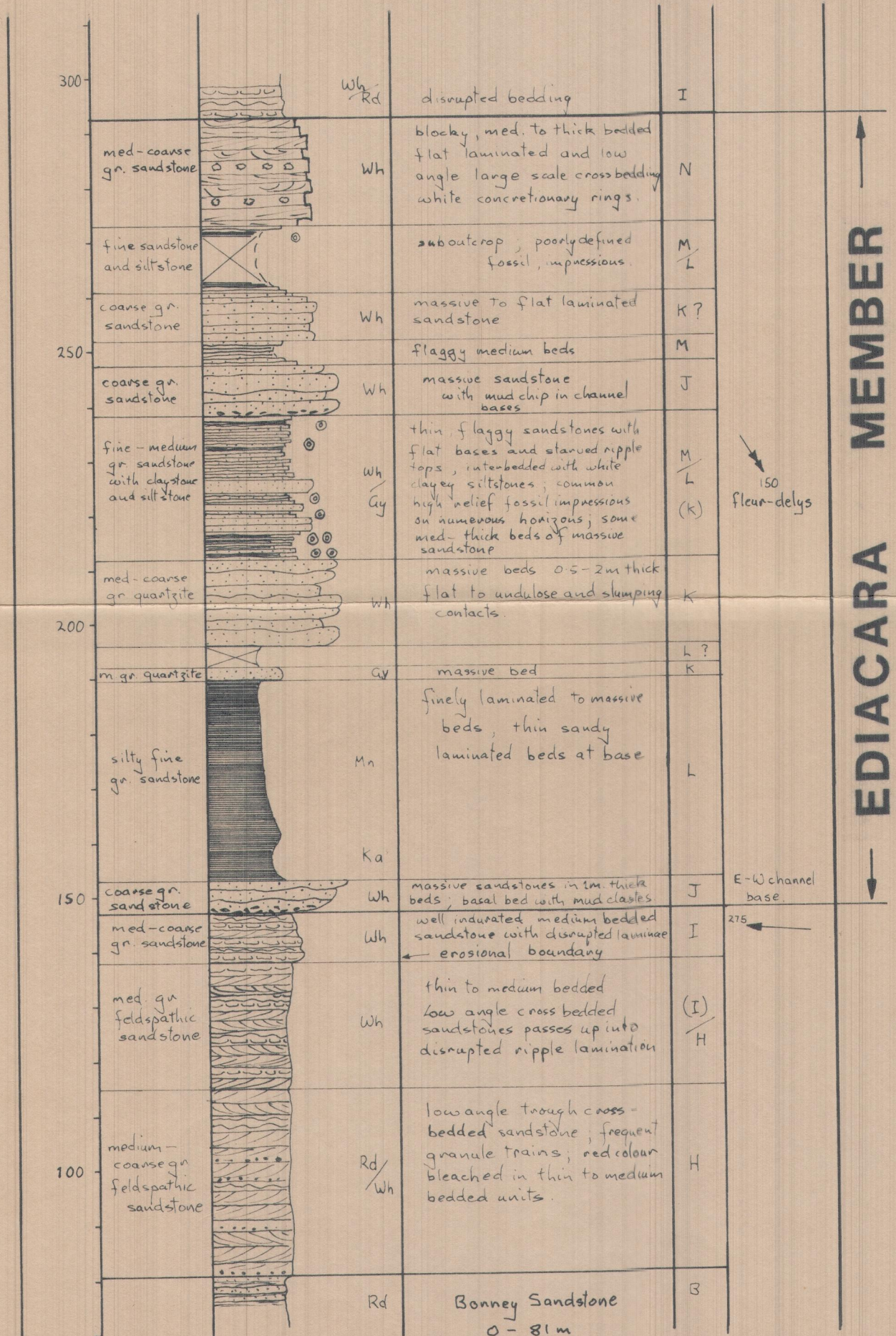


SECTION

31

EAST CHACE RANGE

FIG. IX

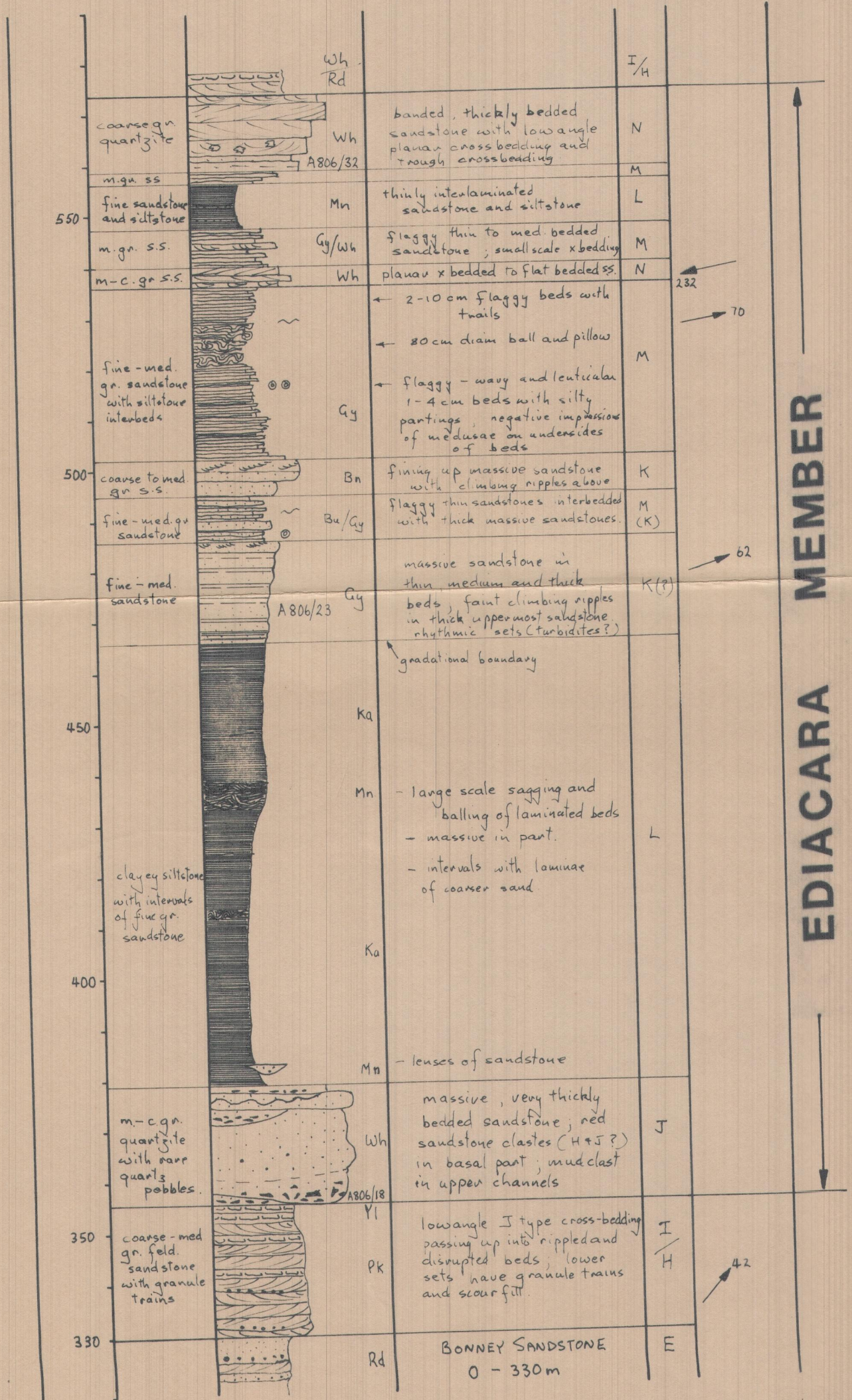


J. Gehling, 82.

# SECTION 12

# S.W. CHACE

## FIG. X



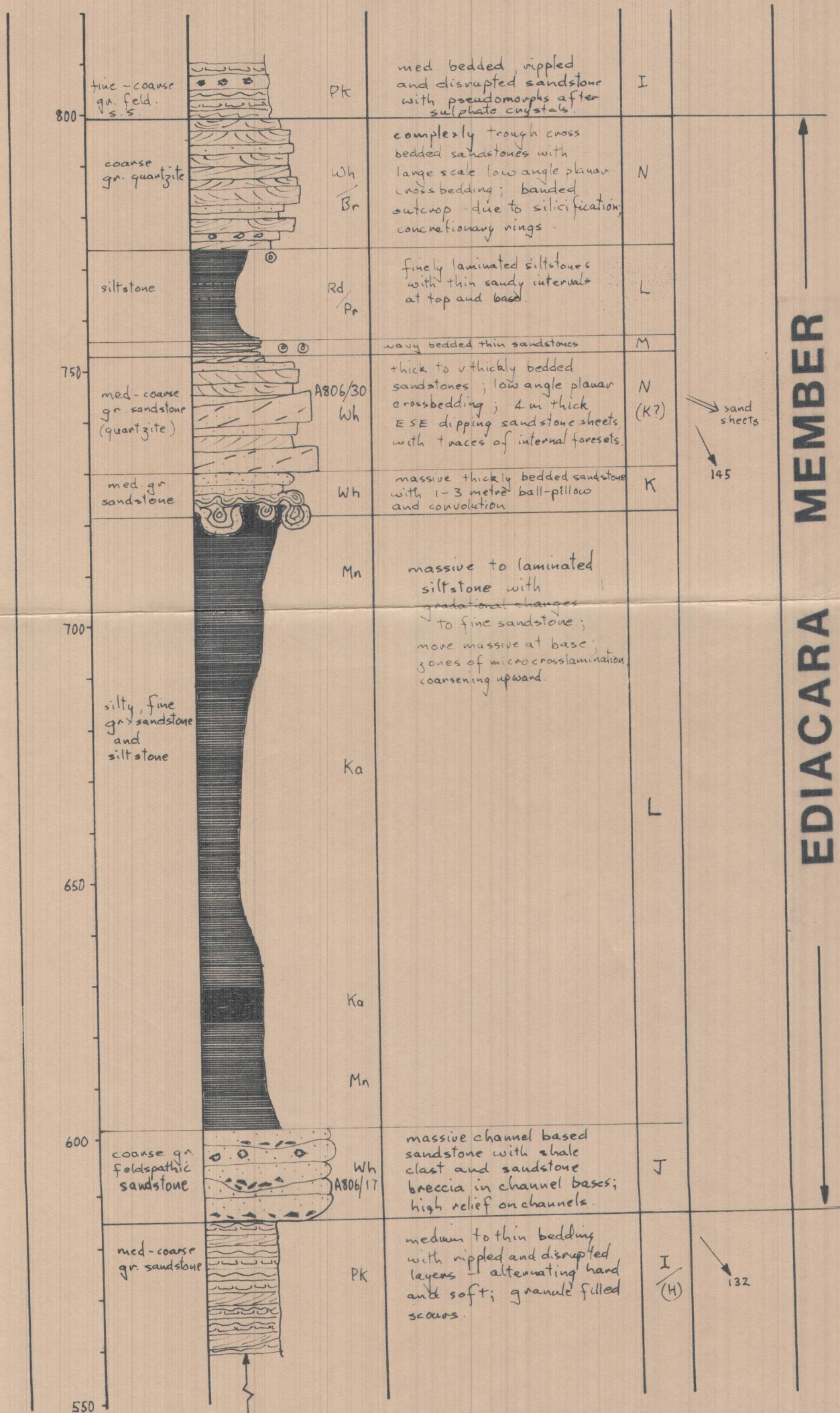
**EDIIACARA MEMBER**

J. Gehling  
82.

# SECTION 13

# NTH. RAWNSLEY BLUFF

## FIG. XI



MEMBER

EDIACARA

from 457 to 585 m. - lower RAWNSLEY QUARTZITE  
 BONNEY SANDSTONE 457 m.

J. Gehling  
 '82.