



Roseworthy Old Collegians Assoc. Inc.

---

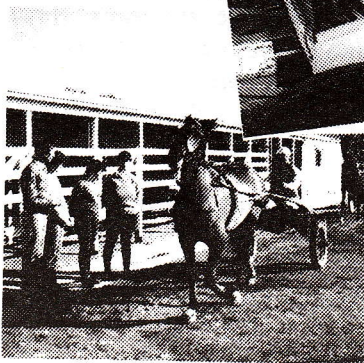
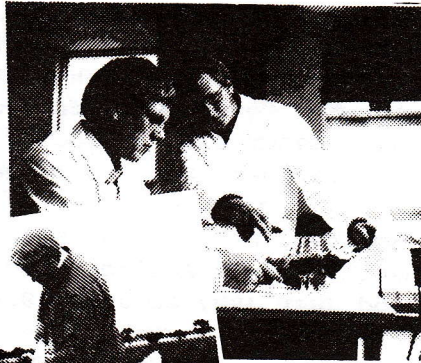
# R.O.C.A. Digest

---

Registered by Australia Post publication No. SBH0253

EDITOR: ANDREW MICHELMORE

JULY 1988



**NEWS FROM THE COLLEGE.....**

Roseworthy Agricultural College continues to make significant progress.

**Recent highlights include the designation of the College as the Key Centre for Teaching and Research in Dryland Agriculture and Land Use Systems.** This designation was achieved competitively. The College was the only one of 15 successful applications, from a total of well over 200 from higher education institutions throughout Australia, in agriculture and land use. Special funds of \$176,000 per annum for at least the next 3 years, and possibly for the next 6 years, will be provided by the Commonwealth Government.

Key Centres recognise existing strengths in teaching and research and stimulate interactions between higher education institutions and the industries they serve. Much of the effort in the Roseworthy Key Centre will be towards production of teaching materials, including audio-visual materials, for use throughout Australia.

Dr Vic Squires, Head of the Division of Land Management, who was Acting Associate Director for the period July 1987 to July 1988, will lead the Key Centre.

**The College has continued to press its support for relocation of Department of Agriculture research activities, particularly the Field Crop Improvement Centre, from Northfield to Roseworthy.** The College made such a proposal during 1984 to the UFS working party on co-ordination of field crop breeding and research.

Then and now the major objection seems to be the perceived problems of obtaining staff to work at Roseworthy. I still consider that to be a narrow and incorrect view, particularly if one considers the inevitable longer-term expansion of the metropolis and the immediate and continuing benefits of associations between teaching staff, students and research staff; the conduct of research in a real agricultural environment; convenient access to field plots for selection of promising lines for large-scale testing in other areas of the state; and sharing of overhead and support facilities such as libraries and computers.

In any case, the College continues to attract top quality staff - for example, Dr Robert Fletcher's appointment in 1985 to the wheat breeding team.

**One aspect of the College's history and progress** has been documented meticulously by Mr Denis Harrison RDA (Hons). The publication, "**Roseworthy Agricultural College - Historical Development of the Land**", supported by ROCA and compiled by Mr Harrison, sets out details of land acquired for the College. Aerial photographs and paddock plans from key stages in the expansion of the College's property are included in the publication, and large-sized framed versions of them will be hung in the foyer of the new Agriculture Building to be occupied soon.

Copies of the publication are available from the College for a cost of \$2.00 over the counter, or \$3.00 by mail.



BARRIE THISTLETHWAYTE  
Director  
8.6.88.



## PRESIDENT'S REPORT

### "THE TIMES - THEY ARE A'CHANGING"

The words of the song made famous by 'Peter Paul and Mary' over twenty years ago have never been more relevant to the College and to us than they are now.

The staff both past and present, including the past and present Directors at the College, deserve our congratulations for their part in the achievement of "Key Centre" status of the College. We are one of only fifteen institutions in more than two hundred throughout the nation who have so recognised. On your behalf, I also congratulate the Council and the President, Dr Bruce Eastick.

However, let's not forget the role which students, both past and present, have played in this. Not only their academic achievements whilst at the College, but also their outstanding professional performance in their chosen careers in more than one hundred years of this nation's history has made a most significant contribution now recognised by this status award.

Therefore, let's not overlook the fact that a graduate tax on the incomes of future generations of students would be an even more onerous, unjust burden on people from rural communities engaged in enterprises (jobs) associated with rural production and land management than on any other class of tertiary graduate. Income levels are relatively smaller amongst our professionals than they are by comparison from graduates from such courses as say, accountancy, computer science, engineering, dentistry, medicine, law - the list goes on. This will probably result in fewer and, in all probability, less well qualified matriculants seeking to enter the professions of say, agriculture, veterinary science, land management - indeed the whole of the spectrum of graduates upon whom Australia relies for the wealth derived from the lion's share of our export income.

Denis Harrison deserves an accolade for the outstanding work he has done in conjunction with the Director (on behalf of ROCA) as part of our bi-centenary effort in producing an outstanding book of the pre-history and written history of the occupation and ownership of the land upon which the College is situated. As a consequence of this work, ROCA has donated photographs and prints which have been framed and will hang in the foyer of the new agriculture building illustrating the stages of development of the College land.

There have been a substantial number of outstanding nominations for the Award of Merit. The panel will once again have a tough job this year.

ROCA is not just an organisation which exists for the purpose of providing ego-massage and social fraternisation for Old Collegians. It never has been. However, the public image we project with our name may result in the wider community thinking of us in these unflattering terms. As we enter the era of horizontal (we hope) integration with other higher education institutions in South Australia, we may need to change our name to an alumni association. What do you think?

Your Committee has made a substantial contribution to the debate and resulting proposals about the need for autonomous status of Roseworthy College within the horizontally integrated framework of higher education institutions in South Australia. On your behalf, we wrote to the Hon. John Dawkins, Federal Minister for Employment Education and Training; the Hon. Lynn Arnold, State Minister of Employment and Further Education; and Dr. Fred Ebbeck, the Director of Tertiary Education, outlining our case for the College. These proposals are contained in the Government White Paper.

However, the battle is not yet over. There have been many strong protests from a majority of the institutions which have expressed concern about substantial aspects of the proposals contained in the White Paper. I believe the Government will be compelled to withdraw and redraft it. In consequence, I again urge you to write to any, or all, of the foregoing gentlemen and emphasise the need for autonomous status for Roseworthy. The ensuing letter from the Secretary outlines the case as we put it.

Dear Dr. Ebbeck,

Roseworthy Old Collegians Association wishes to make the following submission in response to the discussion paper "Higher Education in South Australia including options for restructuring", issued by the Hon. L.M.F. Arnold, in December 1987.

It does so, not only on the basis of representing old collegians with an historic connection with the College, but also as an active body whose wide range of membership includes industry leaders and employers in agriculture, the wine industry and land management.

While accepting that the College is the smallest College of Advanced Education in South Australia, Roseworthy has a long history of teaching, research and industry liaison, particularly in relation to agriculture and the wine industries and more recently in relation to natural resources management.

Despite recurring assertions that small institutions inherently are inefficient financially, we are not aware of any hard data, particularly in the Australian context, which supports such assertions. Given the special nature of the College as to teaching and related activities and given its geographical separation from other institutions, particularly the headquarters of these institutions, we do not believe that real efficiencies would result from amalgamation of Roseworthy Agricultural College with another institution.

The College has built up a sound reputation for the practical emphasis of its courses and for the opportunities afforded to students of different backgrounds and different aspirations, by the range of Associate Diploma, Degree and post-graduate Diploma courses offered. It is our firm and long considered view that this character would be best maintained by confirming the present structure. In the unhappy event of amalgamation we submit that it is vital that the final outcome of the review results in the following:

- a continuation of at least the Roseworthy part of the name "Roseworthy Agricultural College";
- the continued emphasis on the practical vocational relevance related to agriculture, natural resources management and wine science; and

- continuation of the availability of courses of different undergraduate and post-graduate levels.

The College has a long and respected history of service to education and research in the agriculture and wine industries in South Australia. Since 1974 when the College became a College of Advanced Education, this respect has been maintained and expanded into broader land management perspectives resulting from the College's teaching, research and consultancy activities in natural resource management.

The College's teaching and research activities in agriculture and its field resources would be compatible with those of the Waite Agricultural Research Institute of the University of Adelaide. Other University of Adelaide activities for example, engineering, basic and applied sciences, economics and commerce, have counterparts in the College. The College's natural resources courses, business subjects and developing activities in external studies and programs for Aboriginal students have parallels in the S.A. C.A.E.

ROCA believes that Roseworthy has established a bank of expertise in the conduct of courses in agriculture and resource management, in addition to which it holds extensive capital assets and land resources for this purpose. Unlike other existing institutions, it has ample space for the construction of buildings and development for recreational and other facilities to enable long term future expansion. This ideally places the College in the position of being the nucleus of a larger faculty of land management. Resources and teaching support from other institutions with allied courses could be channelled into the Roseworthy campus in response to developing needs.

Whilst ROCA accepts that it may be a necessity that the College become a part of some larger tertiary institution, it strongly affirms the principle of a high level of local autonomy within that structure. This will allow the College to respond to local circumstances and needs, while complying with overall University policy.

ROCA submits that an important aspect which may be overlooked in determining the future of Roseworthy is the existence of the continuous 105 year Record of agronomic, livestock and meteorological data pertaining to the Adelaide Plains environment. This is a unique resource which needs special consideration to ensure not only its preservation but also its continued collection.

The thrust of the submission made to you by the College Council is unreservedly endorsed by ROCA.

The Old Collegians Association recognises the benefit of this review into tertiary education and feels confident that Roseworthy will continue to provide the lead for training in agriculture and land resource management within any new institutional format your committee may recommend.

Yours sincerely,

A.G. 'BARDY' McFARLANE - Secretary  
PETER LEWIS, President  
Roseworthy Old Collegians Association Inc.

**1988 REUNION AND DINNER**

The 1988 A. G. M. and Reunion Dinner will be held at the Renaissance Tower Restaurant, Rundle Mall on Friday 9th Sep. Meeting at 5.30 and Dinner 7.00 for 7.30pm. Cost \$21.00 ea. Greg Moulds, 4 Allen St. Waikerie S.A. 5330 is the contact for the 10 year group.

Peter Ellis, 50 Austral Tce. Malvern S.A. 5061 is the contact for the 25 year group.

Gordon McHugh, 3 Gordon Tce, Morphettville S.A.5053 is the contact for the Re-hab. students. This includes all who completed their course, or studied under the Re-hab. scheme after W.W.II. You know if you qualify; don't wait - let him know you'll be there.

It is anticipated that all available past Principals and Directors will be present this year.

**BRANCH REUNIONS**

The Eyre Peninsula group will meet again on the last weekend in February. A great weekend; see you there!

The South East group will have a function again this year. Allan Richardson, A.B.C., Mt. Gambier will tell you more about it on his morning session.

Andrew Solomon, C/- Box 736, DENILIQUIN N.S.W. 2710 would like to hear from any members in Southern N.S.W.

Michael Flaherty, 20 Palmer St. W.A. 6220 will help organise the W.A. Members. Please get in touch with him.

Mark Babidge will, no doubt, ring the members in Chile.

## 8.

### A M FOR BRIAN JEFFRIES

Sheep consultant Brian Jeffries has been made a Member of the Order of Australia ( A M ) in the recent Queen's Birthday Honours list for his service to the sheep industry.

Brian was principal sheep and wool adviser in the Dept. Agriculture for many years until his retirement in 1986. He also worked for several years in Tasmania on the development of the 'Cormo' breed which combined the wool characteristics of the Merino and the cold hardiness of the Corriedale. He also spent three years in Argentina, helping improve coarse wool sheep.

### "THE TIMES - THEY ARE A-CHANGING" AT R. A. C.

After 78 years of successful breeding, the Roseworthy stud Jersey herd is being reduced. A nucleus stud will be kept.

The Roseworthy Jersey stud was founded in 1910, and is the longest continuous Jersey stud in S.A. It has had considerable success at the Royal Adelaide Show, winning eight championships and reserves since 1975 (and many more before).

The College has entered 20 Jersies and six Holsteins for the Royal Adelaide Show.

### AND ON THE RACE COURSE.....

The 'Horse Course' is helping to keep Roseworthy on the map. Last year Peter Jones bought a 'scrawny yearling to help teach the students the finer points of racehorse training'. The "ugly duckling", named "Roseworthy Gossip", has been entered in two races and has had two wins.

### STUDENT NUMBERS.....

The Academic Secretary reports that numbers are now over 700 enrolled students. A clear indication of the need for a College to provide an increasing number of graduates with practical and technological skills to meet the market.

The College honoured 163 students on Graduation Day.



## R. O. C. A. COMMITTEE ELECTIONS

Nominations are required for all positions on the committee. Please send your nominations with your replies for the A.G.M. & Dinner. (See Dec '87 issue for present Officers).

## COLLEG FARM Paddock NAMES BOOKLET

Copies of the booklet prepared by Denis Harrison will be available at the A.G.M. & Dinner at a cost of \$2.00. (See page 3. for further details).



## R. O. C. A. BADGES

Membership badges are again available after a recent sell-out. Cost is the same as before :- \$10.00 for the "Saw-pierced" ones and \$5.00 for the plain badge.

Orders to the Secretary, R.O.C.A. C/- Roseworthy College, ROSEWORTHY S.A. 5371.

## COLLEGE WINES

Quality wines are still available from the College Cellars. Ring write or call for further details.

## FAMILY DAY 10th April

We now know thar ROCA members are not great gamblers. You all thought that the season was going to break on that day and did not respond to our plans for a great day, so it was cancelled. When Sunday 10th April dawned a bright sunny day, my phone 'ran hot' with calls. Enough to make it a great day if..... You can't win 'em all!

**HAVE YOU CHANGED ADDRESS OR JOB LATELY?**

As Digest Editor, I get too many Digests 'returned to sender' because we were forgotten when you moved. Most do send a formal note, with a new address --- Thank You.

It's a pleasure to receive a note from members, with some information about their work. Most were at R.A.C. for 3 years, and are known to a wide range of contacts. Here's the news from Mark Babidge, a 1968 graduate:-

Dear R.A.C.,

'A far cry from the days of winemaking to running a telephone company in Chile.

Pleased to see the ROCA Digest is still going strong and the newsletter in swing.

Could you please change my address to:

DEL INCA 4622, Apoquindo, Las Condes, SANTIAGO - CHILE

All the Best, Mark H. Babidge.'

Thanks, Mark, but I do think that's taking the idea of flexibility of R.A.C. training a bit too far! (Editor)

I hope you've all got the message, and flood the system with news from members. Next year's Editor is looking for items to make his job easier.

**WORK FOR STUDENTS**

R. O. C. A. members can help present students by giving them work experience during their vacations. You may be able to help by giving counselling to students to help them decide their career.

If you can help, please contact the College. Graham Brookman is the organiser of this work.

1988 A. G. M. and REUNION DINNER

PLEASE FILL IN AND RETURN

R. S. V. P. 2nd September to:

R. O. C. A. Secretary,  
C/- Roseworthy Agricultural College,  
ROSEWORTHY S.A. 5371

I will / will not be attending the A.G.M. & Reunion Dinner  
at the Renaissance Tower Restaurant on Friday 9th Sep. 1988

I enclose cheque for \$....., being payment for... at \$21ea.

Name.....

Address.....

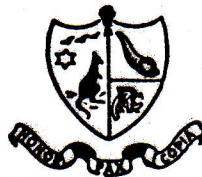
.....

Spouse / Friend. . . . .

I prefer to be seated with my year : Yes / No.

Year Graduated . . . . .

The meeting will be at 5.30 for 6.00pm and the  
Dinner 7.00 for 7.30pm.



**1988 GRADUATES**

Welcome to R. O. C. A. Your free membership was presented to you on Graduation Day, and we will try to keep you in touch with the College. You can, of course, join now and save the rush next year! See you on 9th September?

**1987 GRADUATES**

Your free membership will end at the A.G.M. & Dinner on 9th Sept. Several have joined early, but there is time to use the form herewith. Do it now.

**ANNUAL MEMBERS**

Please post your subs now.

**APPLICATION FOR R. O. C. A. MEMBERSHIP**

I wish to join Roseworthy Old Collegians Association.

NAME.....

ADDRESS.....

.....

.....

Course attended.....Year Graduated.....

**Cheque herewith :- \$40.00 Life Membership / \$5.00 Annual**

**CHANGE OF ADDRESS**

Name.....

Address.....

.....

.....

Course attended.....Year.....

Old Address.....