

# PUBLISHED VERSION

Ruth Pye, Rodrigo Hamede, Hannah V. Siddle, Alison Caldwell, Graeme W. Knowles, Kate Swift, Alexandre Kreiss, Menna E. Jones, A. Bruce Lyons, Gregory M. Woods  
**Demonstration of immune responses against devil facial tumour disease in wild Tasmanian devils**  
Biology Letters, 2016; 12(10):20160553-1-20160553-5

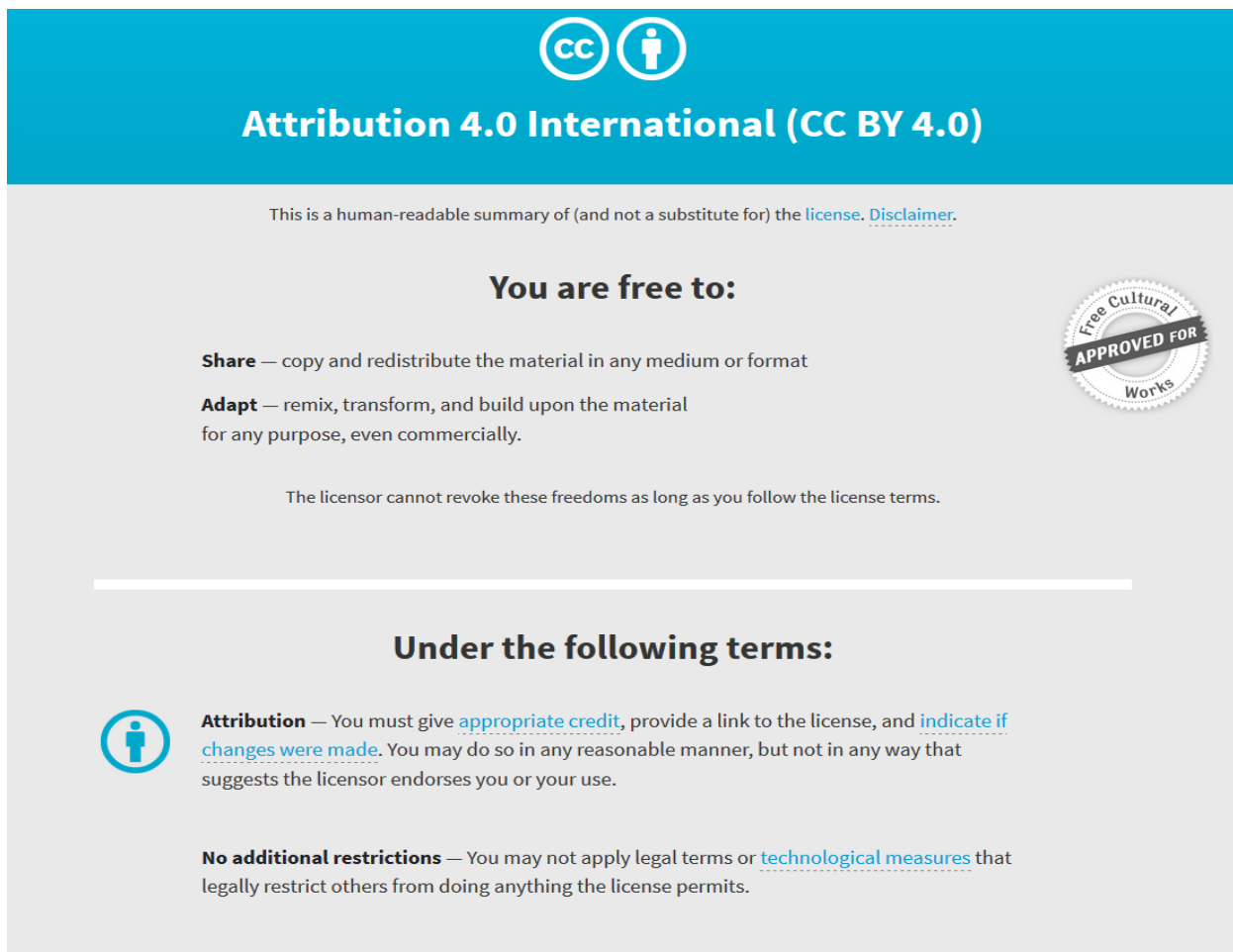
© 2016 The Authors. Published by the Royal Society under the terms of the Creative Commons Attribution License <http://creativecommons.org/licenses/by/4.0/>, which permits unrestricted use, provided the original author and source are credited.

Originally published at:

<http://doi.org/10.1098/rsbl.2016.0553>

## PERMISSIONS

<http://creativecommons.org/licenses/by/4.0/>



The image shows a Creative Commons Attribution 4.0 International License banner. At the top, there is a blue bar with the CC logo and a person icon, followed by the text "Attribution 4.0 International (CC BY 4.0)". Below this, a grey box contains the following text: "This is a human-readable summary of (and not a substitute for) the [license](#). [Disclaimer](#)." The main heading is "You are free to:", followed by two bullet points: "Share — copy and redistribute the material in any medium or format" and "Adapt — remix, transform, and build upon the material for any purpose, even commercially." A circular seal on the right says "Free Cultural APPROVED FOR Works". Below this, it states "The licensor cannot revoke these freedoms as long as you follow the license terms." A horizontal line separates this from the "Under the following terms:" section. The first term is "Attribution", accompanied by a person icon, stating "You must give [appropriate credit](#), provide a link to the license, and [indicate if changes were made](#). You may do so in any reasonable manner, but not in any way that suggests the licensor endorses you or your use." The second term is "No additional restrictions", stating "You may not apply legal terms or [technological measures](#) that legally restrict others from doing anything the license permits."

27 June 2017

<http://hdl.handle.net/2440/105665>



**Cite this article:** Pye R *et al.* 2016  
Demonstration of immune responses against  
devil facial tumour disease in wild Tasmanian  
devils. *Biol. Lett.* **12**: 20160553.  
<http://dx.doi.org/10.1098/rsbl.2016.0553>

Received: 29 June 2016  
Accepted: 22 September 2016

**Subject Areas:**  
ecology, health and disease and epidemiology

**Keywords:**  
Tasmanian devil, devil facial tumour disease,  
immune response, transmissible cancer,  
emerging infectious disease

**Authors for correspondence:**

Ruth Pye  
e-mail: [ruth.pye@utas.edu.au](mailto:ruth.pye@utas.edu.au)  
Gregory M. Woods  
e-mail: [g.m.woods@utas.edu.au](mailto:g.m.woods@utas.edu.au)

Electronic supplementary material is available  
online at [https://dx.doi.org/10.6084/m9.fig-  
share.c.3500358](https://dx.doi.org/10.6084/m9.fig-share.c.3500358).

# Demonstration of immune responses against devil facial tumour disease in wild Tasmanian devils

Ruth Pye<sup>1</sup>, Rodrigo Hamede<sup>3</sup>, Hannah V. Siddle<sup>4</sup>, Alison Caldwell<sup>4</sup>,  
Graeme W. Knowles<sup>5</sup>, Kate Swift<sup>5</sup>, Alexandre Kreiss<sup>1</sup>, Menna E. Jones<sup>3</sup>,  
A. Bruce Lyons<sup>2</sup> and Gregory M. Woods<sup>1,2</sup>

<sup>1</sup>Menzies Institute for Medical Research, and <sup>2</sup>School of Medicine, University of Tasmania, Hobart, Tasmania 7000, Australia

<sup>3</sup>School of Biological Sciences, University of Tasmania, Hobart, Tasmania 7001, Australia

<sup>4</sup>Centre for Biological Science, University of Southampton, Highfield Campus, Southampton SO17 1BJ, UK

<sup>5</sup>Department of Primary Industries, Parks, Water and Environment, Hobart, Tasmania 7000, Australia

GMW, 0000-0001-8421-7917

Devil facial tumour disease (DFTD) is a recently emerged fatal transmissible cancer decimating the wild population of Tasmanian devils (*Sarcophilus harrisii*). Biting transmits the cancer cells and the tumour develops in the new host as an allograft. The literature reports that immune escape mechanisms employed by DFTD inevitably result in host death. Here we present the first evidence that DFTD regression can occur and that wild devils can mount an immune response against the disease. Of the 52 devils tested, six had serum antibodies against DFTD cells and, in one case, prominent T lymphocyte infiltration in its tumour. Notably, four of the six devils with serum antibody had histories of DFTD regression. The novel demonstration of an immune response against DFTD in wild Tasmanian devils suggests that a proportion of wild devils can produce a protective immune response against naturally acquired DFTD. This has implications for tumour–host coevolution and vaccine development.

## 1. Introduction

The Tasmanian devil is the world's largest carnivorous marsupial and unique to Tasmania, the island state of Australia. The species is listed as Endangered owing to mortality from devil facial tumour disease (DFTD) [1]. The disease is a transmissible cancer, first observed in 1996 in the far northeast of the state. It is now found throughout the majority of the devil's geographical range [2]. DFTD is transmitted when susceptible and infected individuals bite each other and is considered invariably fatal, with most animals dying within 6–12 months of the tumour first appearing [3].

In 2015, a second transmissible facial cancer was reported in Tasmanian devils in the southeast of the state [4]. This second cancer was named DFT2, and in the report the original cancer was termed DFT1, with DFTD denoting both. This paper follows the nomenclature and refers to DFT1. The disease is transmitted as an allograft [5] and three explanations were initially suggested to explain the lack of immune rejection: the limited genetic diversity of the species; the unknown competency of the devil's immune system; and the immune evasion mechanisms of the tumour [2]. All research to date addressing these possibilities suggests that it is the successful immune evasion strategies

**Table 1.** DFTD and antibody (Ab) status of six Tasmanian devils exhibiting anti-DFT1 responses. Serum Ab column: '/', no serum sample collected; 'negative', same as MFI control; 'medium', 2–4× MFI control; and 'high', >4× MFI control. YOB, year of birth; FNA, fine needle aspirate.

case no.	YOB	sex	date	DFTD status	serum Abs	comments
TD1	2006	F	Nov 08–May 11 Jul 11 Nov 11 Feb 12	D– D+ D– D–	negative / medium medium	tumour regressed  (not retrapped after Feb 12)
TD2	2006	F	Feb 09–Feb 11 May 11 Nov 11	D– D+ D–	negative medium high	tumour regressed (not retrapped after Nov 11)
TD3	2009	F	Feb 11 Feb 12 May 12 Feb 14 May 14	D– D+ D– D– D+	negative negative / high high	tumour regressed disease free for 2 years DFT1, T lymphocytes in biopsy (not retrapped after May 14)
TD4	2008	M	Jul 11 Aug 12 Nov 13 May 14 Aug 15	D– D+ D– D–	negative / medium high	tumour regressed  still disease free (not retrapped after Aug 15)
TD5	2008	F	Feb 09–Nov 10 Feb 11 May 11	D– D+ D+	negative negative high	T lymphocytes in biopsy (not retrapped after May 11)
TD6	2010	M	Nov 13 Feb 14	D+ D+	negative high	MHC <sup>+ve</sup> DFT1 cells in FNA (not retrapped after Feb 14)

employed by the tumour cells that are primarily responsible for transmission of DFT1 [2,6,7].

Current DFT1 research suggests that a major mechanism of immune escape is downregulation of the major histocompatibility complex class I molecule (MHC-I) [7]. MHC-I cell surface expression occurs on all nucleated cells and allows the immune system to recognize foreign or infected cells. Some cancers fail to express surface MHC-I, a mechanism that contributes to evasion of the host's T cell response. The only other naturally occurring transmissible cancer to affect a mammalian species is canine transmissible venereal tumour (CTVT) in domestic dogs. CTVT also adopts MHC-I downregulation in its progressive phase [8]. However, after three to four months of tumour growth, there is increased surface MHC-I expression resulting in a host allo-response. This is demonstrated by host antibody production and T lymphocyte infiltration of the tumour resulting in tumour stabilization or regression and immunological memory. MHC-I expression is associated with the presence of inflammatory cytokines [8,9]. Likewise, DFT1s downregulation of surface MHC-I can be reversed *in vitro* by treatment of DFT1 cells with the inflammatory cytokine interferon gamma (IFN- $\gamma$ ) [7].

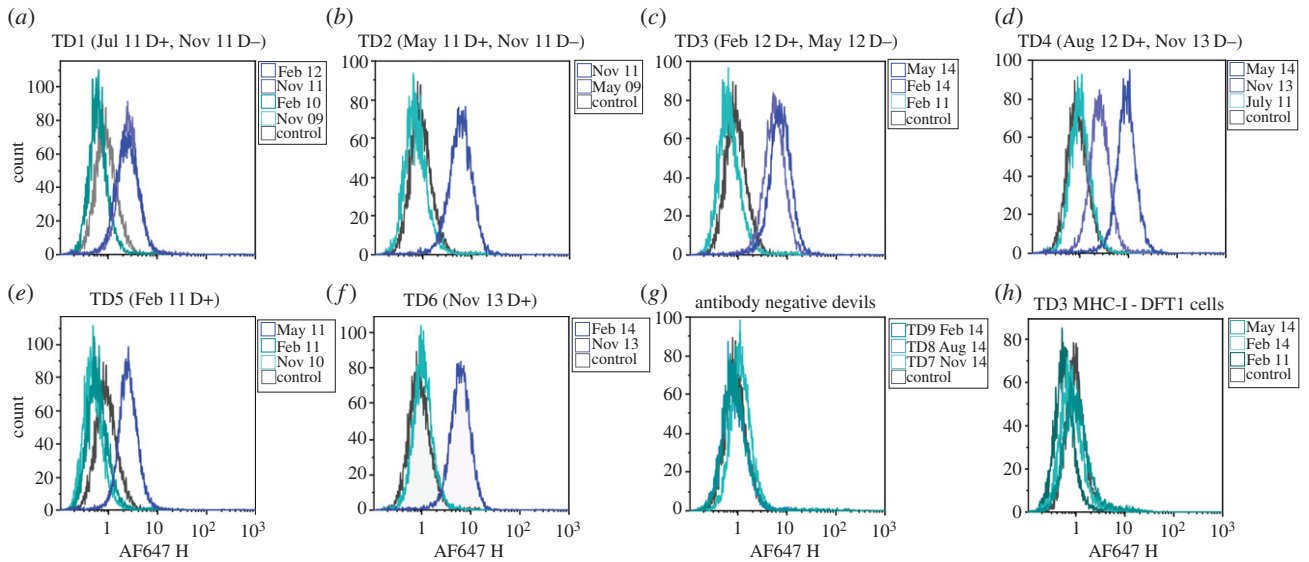
Downregulation of MHC-I provides an explanation for DFT1 transmission and is believed to be responsible for the lack of a T-cell-mediated immune response against the tumour. The long-standing assumptions are that DFT1 always escapes the devil's immune system, and that the disease is invariably fatal. We re-examined these assumptions by analysing serum and tumour samples from a population of

wild devils to detect the presence of anti-DFT1 immune responses.

## 2. Material and methods

Serum samples collected from 52 devils between 2008 and 2014 from a closely monitored population in northwestern Tasmania were evaluated for the presence of IgG antibodies against DFT1 cells. This was done via indirect immunofluorescence and flow cytometry with the median fluorescence intensity (MFI) of each sample recorded [10]. For 45 of the individual devils, multiple serum samples collected over an extended period were analysed. Serum samples were tested against DFT1 cells not expressing MHC-I, referred to as MHC-I<sup>-ve</sup> DFT1 cells, and separately against DFT1 cells treated with IFN- $\gamma$  to induce cell surface expression of MHC-I [7], referred to here as MHC-I<sup>+ve</sup> DFT1 cells. Sera from a translocated population of captive born devils living in wild conditions on a DFTD-free island were used as the negative control.

Of the 52 devils, 34 either had DFT1 at the start or developed DFT1 during the course of sampling. Where tumour biopsies were available, histopathological examination included identification of tumour-infiltrating immune cells. Immunohistochemistry using anti-MHC-II antibody to identify antigen-presenting cells and anti-CD3 antibody to identify T lymphocytes in the biopsy was performed where indicated [11]. Where immunocytochemistry (ICC) was performed on tumour fine needle aspirates (FNAs), the samples were stained for periaxin, a positive marker for DFT1 cells [12], and for  $\beta_2$  microglobulin ( $\beta_2m$ ), a component of the MHC-I molecule.



**Figure 1.** Flow cytometric analysis of anti-DFT1 antibody responses. (a)–(f) IgG serum antibody results of TD1–6 against MHC-I<sup>+</sup>ve DFT1 cells compared with negative control. In brackets are the dates each devil was first observed with DFT1 (D+) and when the tumour was no longer present (D–); (g) representative results from three of the 46 devils that had no serum antibody; (h) negative results of TD3 for serum IgG against MHC-I<sup>–</sup>ve DFT1 cells, representative of TD1–6.

Detailed methods regarding serum and tumour sample collection, and analyses are provided in the electronic supplementary material.

### 3. Results

Of the 52 devils, 46 had no detectable serum IgG antibody against either MHC-I<sup>+</sup>ve or MHC-I<sup>–</sup>ve DFT1 cells. The remaining six devils (referred to here as TD1–6) had serum IgG antibody against MHC-I<sup>+</sup>ve DFT1 cells, but not MHC-I<sup>–</sup>ve cells. None of these six devils had clinical signs of DFT1 at initial sample collection, but developed DFT1 at some stage during sample collection (table 1).

Multiple serum samples from each of the six devils were analysed and for each devil the earliest sample had the same MFI as the negative control. After these devils showed clinical signs of DFT1, they developed anti-DFT1 antibodies (figure 1). Remarkably, DFT1 regression occurred in four of the six devils that had seroconverted (TD1, TD2, TD3 and TD4). When each devil was retrapped between four and 15 months after DFT1 was first noted, their tumours were no longer visible and anti-DFT1 antibodies were detected. TD1 and TD2 were not retrapped after the regression was observed. TD3 remained disease free for 2 years following tumour regression but at the age of 5 years, a tumour biopsy confirmed recurrence of DFT1. Serum antibodies persisted in TD3 at this time and tumour-infiltrating MHC-II positive cells and CD3 positive T lymphocytes were present in the biopsy. TD4 remained disease free for 3 years to the age of 6, beyond which it was not retrapped (6 years is considered the maximum lifespan for a wild devil).

Tumour regression for TD5 and TD6 was not observed; however, their tumour samples showed interesting features. At the time of TD5's seroconversion, the biopsy had tumour infiltration of MHC-II and CD3 positive cells (figure 2). TD6 had tumour FNAs and serum collected when first trapped and again three months later. Cells from the initial FNA were periaxin positive and faintly positive

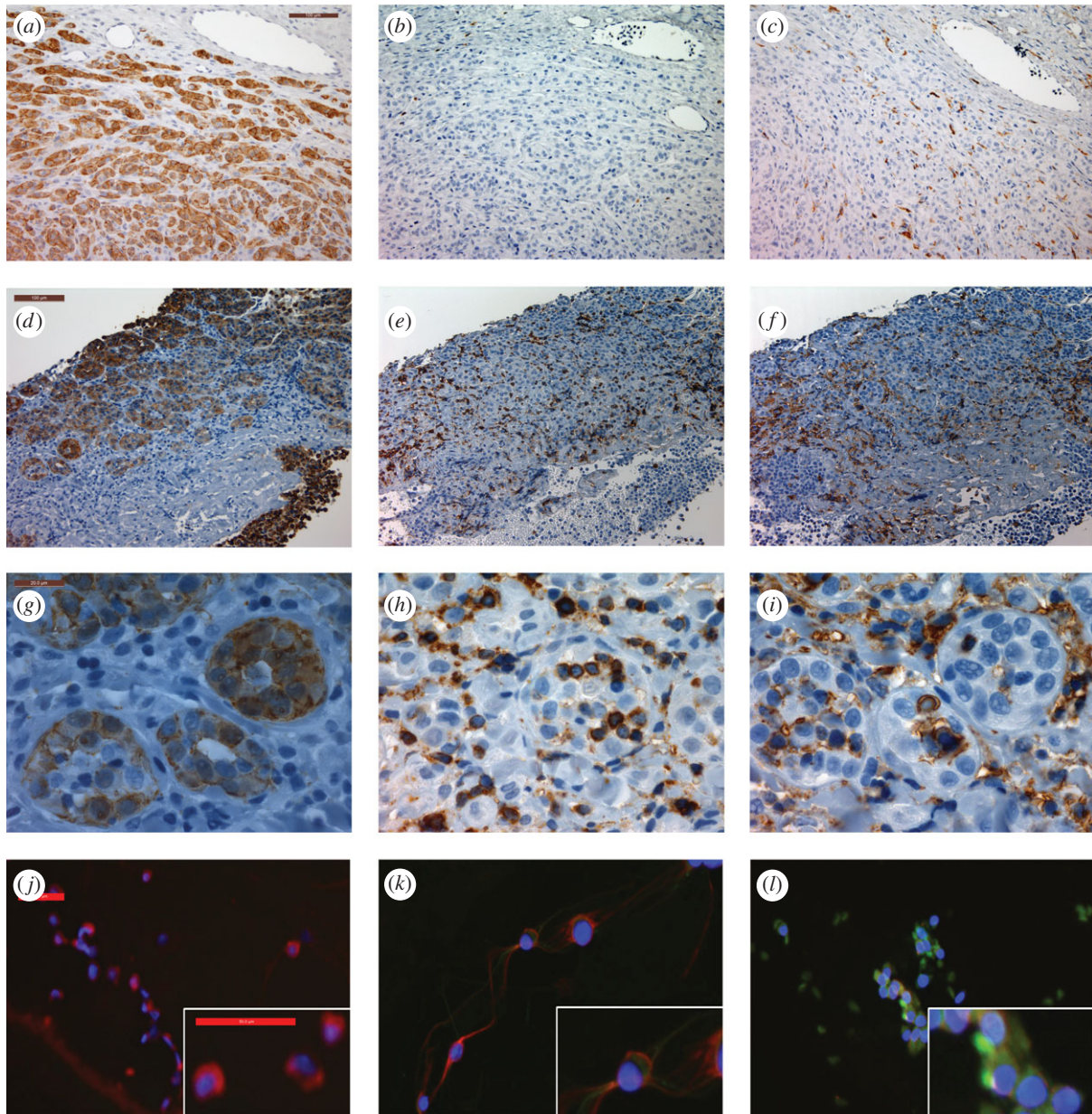
for  $\beta_2m$  (figure 2*j,k*); however, three months later, coinciding with seroconversion, the periaxin positive cells were strongly positive for  $\beta_2m$ , indicating MHC-I expression by the DFT1 cells (figure 2*l*). Neither TD5 nor TD6 was retrapped following seroconversion. In contrast with TD3, TD5 and TD6, the tumour samples from devils without serum antibody did not show significant tumour infiltration of immune cells or  $\beta_2m$  staining.

### 4. Discussion

The immune escape mechanisms of DFT1 play a significant role in its successful transmission and tumour development. While anti-DFT1 immune responses have been induced in captive devils by immunizing with killed DFT1 cell preparations [10], no convincing evidence for immune responses against DFT1 have previously been identified in wild devils. Here we report the first evidence, we believe, of anti-DFT1 immune responses occurring in wild Tasmanian devils exposed to DFT1.

The serum antibodies directed against IFN- $\gamma$  treated DFT1 cells (MHC-I<sup>+</sup>ve) found in six devils may have resulted from an initial immune response against the primary tumour and subsequent IFN- $\gamma$  release. This may have upregulated MHC-I expression on the DFT1 cells, resulting in an immune response against these modified cells. Our results indicate that this response is initiated by infiltrating T lymphocytes, which, although rare, have been documented in at least one case of DFT1 and associated with tumour cell surface expression of MHC-I [7]. What caused the initial immune response is not clear. However, the increase in MHC-I expression on DFT1 cells potentially provided a mechanism for T-cell-mediated killing of tumour cells and ultimately tumour stabilization or regression. Antibody production, in the form of IgG, provides confirmatory evidence that an anti-DFT1 immune response had been generated. It was not possible to accurately measure IgM levels via flow cytometry to determine if IgM/IgG ratios predict protection, as suggested by Ujvari *et al.* [13]. The IgG





**Figure 2.** Evidence for immune cell infiltration of DFT1 or MHC-I expression of DFT1 cells. (*a–i*) IHC staining of DFT1 tumour biopsies. Top and middle rows taken at 20 $\times$  magnification, scale bar indicates 100  $\mu\text{m}$ . Bottom row taken at 100 $\times$  magnification, scale bar indicates 20  $\mu\text{m}$ . Positive cells for each marker are brown; haematoxylin (blue) is the counter stain. (*a,d,g*) periaxin, marker for DFT1 cells; (*b,e,h*) CD3, marker for T lymphocytes; (*c,f,i*) MHC-II, marker for antigen-presenting cells; (*a–c*) typical DFT1 biopsy with no evidence of immune response; (*d–f*) tumour biopsy from TD5 showing infiltration of CD3 and MHC-II positive cells throughout the tumour; (*g–i*) tumour biopsy from TD5 showing immune cells infiltrating DFT1 cell clusters. (*j–l*) ICC of DFT1 cells with periaxin (red), and  $\beta_2\text{m}$  (green) to identify MHC-I surface expression: (*j*) DFT1 cells from culture; (*k*) DFT1 FNA from TD6 collected in November 2013; (*l*) DFT1 FNA from TD6 collected in February 2014. (ICC images taken at 20 $\times$  magnification, each scale bar indicates 50  $\mu\text{m}$ .)

antibodies could facilitate tumour cell killing via antibody-dependent cell-mediated cytotoxicity. Although there are significant differences between CTVT and DFT1, they share characteristics of transmissibility and MHC-I downregulation. Indeed the development of IgG antibodies against DFT1 cells may parallel what is believed to occur in CTVT cases: after the canine tumour has established there are increased numbers of MHC-I<sup>+</sup>ve CTVT cells discernible by immunohistochemistry and immunocytochemistry, and the development of serum IgG antibodies against CTVT cells occurs [8,9]. The experimentally induced CTVTs tend to regress [8], whereas the naturally occurring tumours seem to remain in equilibrium as locally invasive tumours with metastases being uncommon [14]. It is probable that this equilibrium or regression occurs as a result of the increased MHC-I expression of the tumour cells. The

consecutive tumour FNAs taken from TD6 showed increased intensity of  $\beta_2\text{m}$  surface staining indicative of increased MHC-I expression on the DFT1 cells. Upregulation of MHC-I, along with seroconversion occurring at that time, indicates that DFT1 and CTVT may share additional characteristics of disease progression.

While there has been no observed reduction in the demographic effect of DFT1 in the local population of this study, this evidence indicates that DFT1 does not always escape detection by the immune system, and death may not be the inevitable outcome of infection. The naturally occurring immune responses against DFT1 may enable identification of significant tumour antigens and thus advance DFT1 vaccine development. If there is a heritable component to the immune response, over time selection should favour those

individuals that are able to recognize the tumour, with increased survival and, therefore, lifetime reproductive output leading to increased representation of these devil lineages and increased survival of wild populations.

In summary, we have demonstrated a naturally occurring immune response against DFT1 in this population of wild devils. Our findings highlight the value of monitoring disease at the individual level where ongoing microevolutionary changes can be detected and permit evaluation of their impact on the disease trajectory and epidemic outcome at a population level.

**Ethics.** This research was carried out in compliance with and with approval from the University of Tasmania's Animal Ethics Committee (A0013326 and A0012513).

**Data accessibility.** The datasets supporting this article have been uploaded as part of the electronic supplementary material. All manuscript figures belong to the authors.

**Authors' contributions.** R.P., R.H. and A.K. carried out field sample collection/laboratory analysis, R.P., R.H., A.K., H.V.S., M.E.J., A.B.L. and G.M.W. participated in the design of the study and manuscript. R.P. drafted the manuscript. G.M.W., A.B.L., R.H., H.V.S. and M.E.J. revised and critically analysed the manuscript. A.C. performed the immunocytochemistry and interpretation. G.W.K. reviewed and interpreted the histology sections. K.S. performed the cell culture and karyotype. All authors agree to be accountable for the content herein and approve the final version of the manuscript.

**Competing interests.** The authors have no competing interests.

**Funding.** This work was supported by the Holsworth Wildlife Research Endowment Fund, the Australian Research Council (LP0561120 and DP110102656 to G.W., Future Fellowship FT100100250 to M.J.), University of Tasmania Foundation through funds raised by the Save the Tasmanian Devil Appeal, and the National Science Foundation NSF DEB-1316549.

**Acknowledgements.** The authors thank Sarah Peck, Cesar Tovar, Narelle Phillips, Terry Pinfold, Lynn Corcoran, James Murphy, Karsten Skjødt, Jim Kaufman, Mark and Claire Walsh and Forico Pty Ltd.

## References

- Hawkins CE, McCallum H, Mooney N, Jones M, Holdsworth M. 2008 *Sarcophilus harrisii*. In *IUCN Red List of Threatened Species 2008*, e.T40540A10331066. See <http://dx.doi.org/10.2305/IUCN.UK.2008.RLTS.T40540A10331066.en> (accessed March 2016).
- Woods GM, Howson LJ, Brown GK, Tovar C, Kreiss A, Corcoran LM, Lyons AB. 2015 Immunology of a transmissible cancer spreading among Tasmanian devils. *J. Immunol.* **195**, 23–29. (doi:10.4049/jimmunol.1500131)
- Hamede R, Lachish S, Belov K, Woods G, Kreiss A, Pearse AM, Lazenby B, Jones M, McCallum H. 2012 Reduced effect of Tasmanian devil facial tumor disease at the disease front. *Conserv. Biol.* **26**, 124–134. (doi:10.1111/j.1523-1739.2011.01747.x)
- Pye RJ *et al.* 2016 A second transmissible cancer in Tasmanian devils. *Proc. Natl Acad. Sci. USA* **113**, 374–378. (doi:10.1073/pnas.1519691113)
- Pearse AM, Swift K. 2006 Allograft theory: transmission of devil facial-tumour disease. *Nature* **439**, 549. (doi:10.1038/439549a)
- Siddle HV, Kaufman J. 2013 How the devil facial tumor disease escapes host immune responses. *Oncoimmunology* **2**, e25235. (doi:10.4161/onci.25235)
- Siddle HV *et al.* 2013 Reversible epigenetic down-regulation of MHC molecules by devil facial tumour disease illustrates immune escape by a contagious cancer. *Proc. Natl Acad. Sci. USA* **110**, 5103–5108. (doi:10.1073/pnas.1219920110)
- Hsiao YW, Liao KW, Hung SW, Chu RM. 2002 Effect of tumor infiltrating lymphocytes on the expression of MHC molecules in canine transmissible venereal tumor cells. *Vet. Immunol. Immunopathol.* **87**, 19–27. (doi:10.1016/S0165-2427(02)00026-0)
- Cohen D. 1972 Detection of humoral antibody to the transmissible venereal tumour of the dog. *Int. J. Cancer.* **10**, 207–212. (doi:10.1002/ijc.2910100126)
- Kreiss A, Brown GK, Tovar C, Lyons AB, Woods GM. 2015 Evidence for induction of humoral and cytotoxic immune responses against devil facial tumor disease cells in Tasmanian devils (*Sarcophilus harrisii*) immunized with killed cell preparations. *Vaccine* **33**, 3016–3025. (doi:10.1016/j.vaccine.2015.01.039)
- Kreiss A, Obendorf DL, Hemsley S, Canfield PJ, Woods GM. 2009 A histological and immunohistochemical analysis of lymphoid tissues of the Tasmanian devil. *Anat. Rec. (Hoboken)* **292**, 611–620. (doi:10.1002/ar.20896)
- Tovar C, Obendorf D, Murchison EP, Papenfuss AT, Kreiss A, Woods GM. 2011 Tumor-specific diagnostic marker for transmissible facial tumors of Tasmanian devils: immunohistochemistry studies. *Vet. Pathol.* **48**, 1195–1203. (doi:10.1177/0300985811400447)
- Ujvari B, Hamede R, Peck S, Pemberton D, Jones M, Belov K, Madsen T. 2016 Immunoglobulin dynamics and cancer prevalence in Tasmanian devils (*Sarcophilus harrisii*). *Sci. Rep.* **6**, 25093. (doi:10.1038/srep25093)
- Das U, Das AK. 2000 Review of canine transmissible venereal sarcoma. *Vet. Res. Commun.* **24**, 545–556. (doi:10.1023/A:1006491918910)