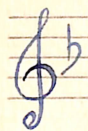


for Violin Solo.
or flute.

"CARE-FREE"

R. G. Cross.

1 min 5 secs.



Solo.

Solo.

Solo.

Handwritten musical notation for the first system, consisting of a single treble clef staff and a grand staff (treble and bass clefs). The music features a melodic line in the treble and a bass line with octaves in the bass clef. A double bar line is present at the beginning.

Handwritten musical notation for the second system, consisting of a single treble clef staff and a grand staff. The notation includes a melodic line in the treble and a bass line with octaves. A double bar line is present at the beginning.

loco.

Handwritten musical notation for the third system, consisting of a single treble clef staff and a grand staff. The notation includes a melodic line in the treble and a bass line with octaves. A double bar line is present at the beginning.

Handwritten musical notation for the fourth system, consisting of a single treble clef staff and a grand staff. The notation includes a melodic line in the treble and a bass line with octaves. A double bar line is present at the beginning. The text "RH. b f" is written above the treble staff and "L.H." is written below the bass staff.

Handwritten musical score system 1. It consists of a single treble clef staff and a grand staff (treble and bass clefs). The treble staff contains a melodic line with various note values and rests. The grand staff contains accompaniment with chords and moving lines. There are some handwritten annotations in blue ink, including a large bracket and some scribbles.

Sra.

Handwritten musical score system 2, labeled *Sra.* with a dashed line. It features a treble clef staff with a melodic line and a grand staff with accompaniment. The notation includes various note values, rests, and some blue ink annotations.

Sra.

Handwritten musical score system 3, labeled *Sra.* with a dashed line. It consists of a treble clef staff and a grand staff. The treble staff has a melodic line with some blue ink annotations. The grand staff contains accompaniment with chords and moving lines.

Handwritten musical score system 4. It consists of a treble clef staff and a grand staff. The treble staff contains a melodic line with various note values and rests. The grand staff contains accompaniment with chords and moving lines.

8va

Handwritten musical score for the first system. It consists of a treble clef staff and a grand staff (treble and bass clefs). The music includes various note values and rests. A '3' is written above a final chord in the treble staff.

acceldo.

Handwritten musical score for the second system. It features a treble clef staff and a grand staff. The word "Loco" is written above the treble staff. The grand staff shows a simple harmonic accompaniment.

Handwritten musical score for the third system. It features a treble clef staff and a grand staff. The music includes dotted rhythms and sustained notes.

Con Ped.

Handwritten musical score for the fourth system. It features a treble clef staff and a grand staff. The music includes a "Veloce" marking and a "3" above a final chord. The page ends with a signature and the number "65".

Kensington
65