



Micro-analytical and molecular approaches for understanding the distribution, biochemistry, and molecular biology of selenium in (hyperaccumulator) plants

Katherine Pinto Irish¹ · Maggie-Anne Harvey¹ · Hugh H. Harris² · Mark G. M. Aarts³ · Cheong Xin Chan⁴ · Peter D. Erskine¹ · Antony van der Ent¹

Received: 6 November 2021 / Accepted: 22 October 2022 / Published online: 23 November 2022
© The Author(s) 2022

Abstract

Main conclusion Micro-analytical techniques to untangle Se distribution and chemical speciation in plants coupled with molecular biology analysis enable the deciphering of metabolic pathways responsible for Se tolerance and accumulation.

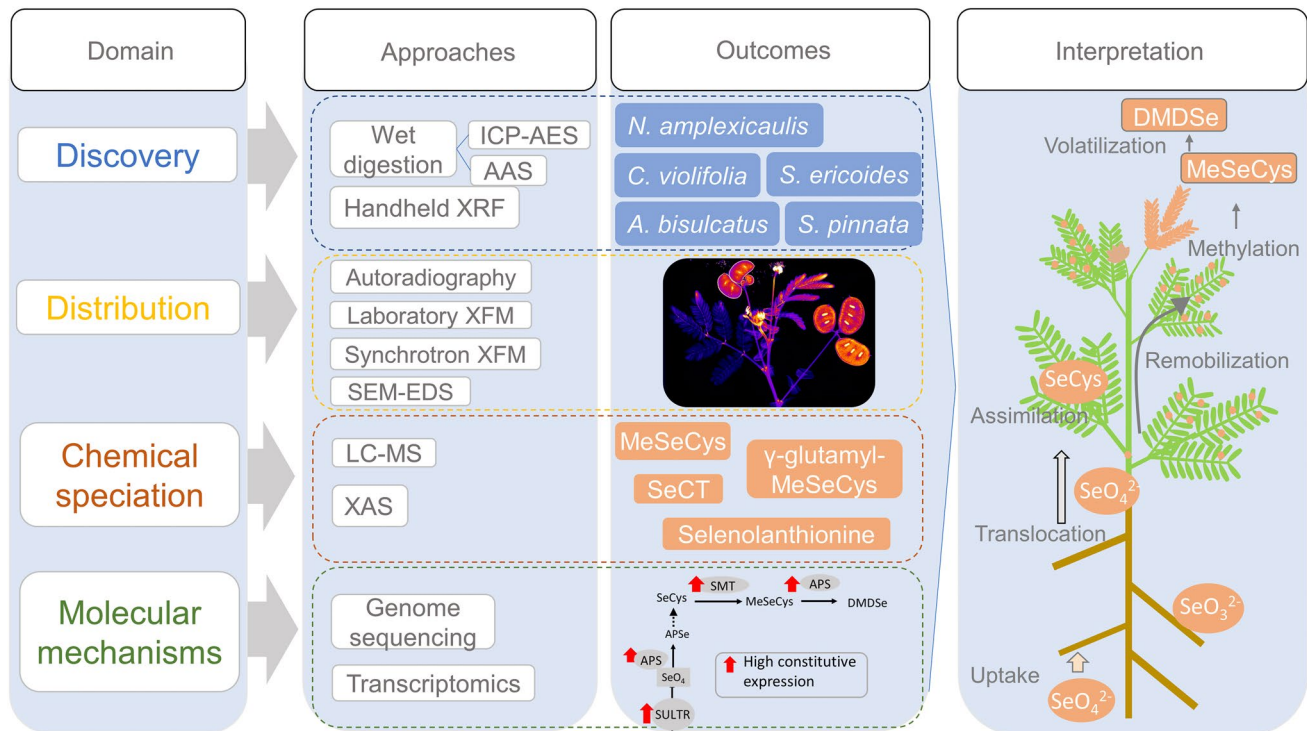
Abstract Selenium (Se) is not essential for plants and is toxic at high concentrations. However, Se hyperaccumulator plants have evolved strategies to both tolerate and accumulate $> 1000 \mu\text{g Se g}^{-1} \text{ DW}$ in their living above-ground tissues. Given the complexity of the biochemistry of Se, various approaches have been adopted to study Se metabolism in plants. These include X-ray-based techniques for assessing distribution and chemical speciation of Se, and molecular biology techniques to identify genes implicated in Se uptake, transport, and assimilation. This review presents these techniques, synthesises the current state of knowledge on Se metabolism in plants, and highlights future directions for research into Se (hyper)accumulation and tolerance. We conclude that powerful insights may be gained from coupling information on the distribution and chemical speciation of Se to genome-scale studies to identify gene functions and molecular mechanisms that underpin Se tolerance and accumulation in these ecologically and biotechnologically important plants species. The study of Se metabolism is challenging and is a useful testbed for developing novel analytical approaches that are potentially more widely applicable to the study of the regulation of a wide range of metal(loid)s in hyperaccumulator plants.

Communicated by Dorothea Bartels.

✉ Antony van der Ent
a.vanderent@uq.edu.au

- ¹ The University of Queensland, Sustainable Minerals Institute, Centre for Mined Land Rehabilitation, Brisbane, QLD 4072, Australia
- ² Department of Chemistry, The University of Adelaide, Adelaide, SA, Australia
- ³ Laboratory of Genetics, Wageningen University and Research, Wageningen, The Netherlands
- ⁴ The University of Queensland, School of Chemistry and Molecular Biosciences, Australian Centre for Ecogenomics, Brisbane, QLD 4072, Australia

Graphical Abstract



Keywords Genome-scale studies · Selenium metabolism · SMT · Spectroscopy · SULTR · Transcriptomics · X-ray fluorescence elemental mapping

Abbreviations

ATPS	Adenosine triphosphate sulfurylase
APSR	Adenosine 5'-phosphosulfate reductase
DMDSe	Dimethyldiselenide
DMSe	Dimethylselenide
MeSeCys	Methyl-SeCys
SeCys	Selenocysteine
SeMet	Selenomethionine
SMT	Selenocysteine methyltransferase
SULTR	Sulphur transporter
XANES	X-ray Absorption Near Edge Structure
XFM	X-ray fluorescence microscopy
XRF	X-ray fluorescence

Introduction

Selenium (Se) is a trace element that is essential for human and animal nutrition (Schwarz and Foltz 1957). It is incorporated in selenoproteins that play important roles in redox balance maintenance, immune response, cognitive health, and the formation of thyroid hormones (Kieliszek and Błażejka 2013; Weekley and Harris 2013). While inadequate intake of

Se causes Se deficiency, excess Se can cause a rare condition called *selenosis*, mostly found in livestock from seleniferous areas (Plant et al. 2003; WHO 2009; Winkel et al. 2012; Malagoli et al. 2015; Wu et al. 2015; Rayman et al. 2018). Although Se is not essential for plants, the element can be absorbed and accumulated in plant tissues, which makes them an important source of Se dietary for animals (Dumont et al. 2006). Rare plant species called *hyperaccumulators* can accumulate $> 1000 \mu\text{g Se g}^{-1} \text{DW}$ in their shoots whilst non-accumulator plants typically have $< 100 \mu\text{g Se g}^{-1} \text{DW}$ (Brown and Shrift 1982; Anderson 1993; Terry et al. 2000) (Fig. 1). Since Se hyperaccumulator plants can attain Se to high concentrations in their living shoot, these plants are potential candidates for phytoextraction; a process in which plants are harvested to remediate a polluted soil and/or for their accumulated trace element, such as Se, and used in the production of dietary supplements (Bañuelos et al. 1997; Haug et al. 2007).

Selenium in the environment is commonly found as selenate (SeO_4^{2-}) and selenite (SeO_3^{2-}) (Sors et al. 2005). Whereas SeO_4^{2-} is the main Se form in oxic soils, including most cultivated soils (White 2016), SeO_3^{2-} is prevalent in anaerobic soil environments (Mikkelsen et al. 1989; Fordyce

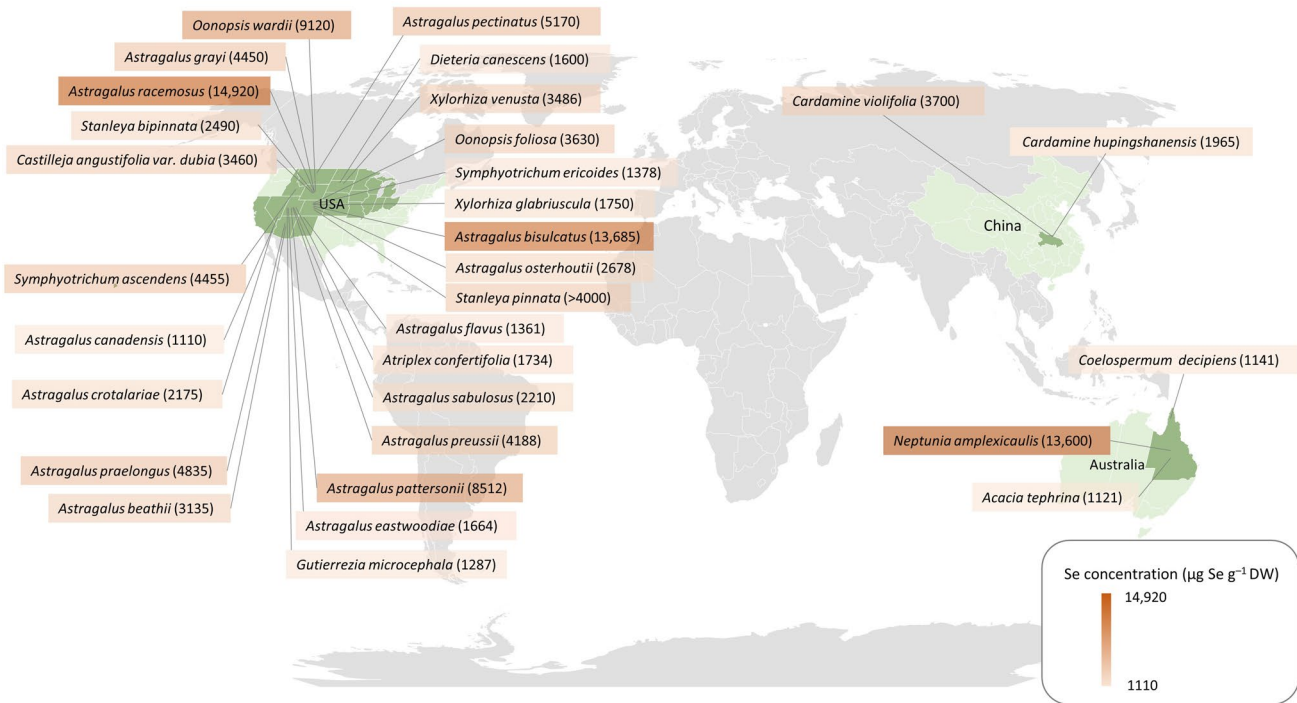


Fig. 1 Global selenium hyperaccumulators species (> 1000 µg g⁻¹ DW foliar Se) with foliar concentration data from either nature or experimental conditions growing on Se spiked soil (hydroponics data

excluded). Concentration and location data from White (2016), Both et al. (2018) and Harvey et al. (2020)

2013). Plants mainly take up Se as SeO₄²⁻ through sulphate transporters (SULTRs) (Zhang et al. 2014; White 2016). Once inside the cell, SeO₄²⁻ can be reduced and incorporated into the amino acids selenocysteine (SeCys) and selenomethionine (SeMet) using the pathway for sulphate reduction and assimilation (Sors et al. 2005; White 2018). The sulphide bridge between two cystine (Cys) residues allows the tertiary structure in proteins, therefore the replacement of Cys for SeCys affects their structure and function (Brown and Shrift 1982). Additionally, at an enzyme active site, the replacement of Cys for SeCys can affect the affinity for the substrate leading to changes in the activity (Van Hoewyk 2013). The first step in the assimilation is the activation of SeO₄²⁻ to adenosine 5'-phosphoselenate (APSe) by the enzyme adenosine triphosphate sulfurylase (ATPS). APSe is then reduced to SeO₃²⁻ by adenosine 5'-phosphosulfate reductase (APSR) (Sors et al. 2005). Selenite is reduced to selenide most likely by glutathione or glutaredoxins (Hsieh and Ganther 1975) which is incorporated into SeCys by the Cysteine Synthase complex (CS) (Bogdanova and Hell 1997). Plants can convert SeCys into elemental selenium (Se⁰) by the action of chloroplast-localised cysteine desulfurase (CpNifS) (Pilon-Smits et al. 2002). In a different pathway, SeCys can be converted via SeMet into S-methyl selenomethionine from where plants can volatilise dimethyl selenide (DMSe) (Lewis and Johnson 1974). In a

third pathway described for hyperaccumulators and some non-accumulators, SeCys is methylated by Selenocysteine methyltransferase (SMT) to form methyl-SeCys (MeSeCys), thus avoiding the incorporation into proteins. MeSeCys is then converted into dimethyl diselenide (DMDSe), another volatile compound (Evans et al. 1968). The methylation of SeCys and the synthesis of DMDSe appear as the two main strategies to cope with Se toxicity in Se hyperaccumulators (Pilon-Smits and LeDuc 2009).

Research on the metabolism of Se in plants has been complicated by the complexity of Se biochemistry and the volatile properties of some Se compounds. The development of new techniques has expanded the knowledge on Se metabolism, accumulation, and tolerance in Se hyperaccumulator species. Here, we review the state-of-the-art and current approaches used to discover Se hyperaccumulator plants, to assess the plant distribution and chemical speciation of Se, and to elucidate the molecular mechanisms that underpin Se accumulation and tolerance in plants. These approaches range from microanalytical chemistry to molecular biology covering advanced microscopy using X-ray fluorescence, as well as genome-scale molecular techniques. The study of Se metabolism is not only interesting, but extremely challenging and it, therefore, makes it a useful testbed for developing novel approaches that are applicable to the study of a wide range of metal(loid)s in hyperaccumulator plants.

This review concludes with suggested future directions for research to improve the understanding of Se hyperaccumulator plants.

Discovery of selenium (hyper)accumulation in plants

Plants colonising seleniferous soils have evolved mechanisms of tolerance and strategies to cope with Se toxicity (Cappa et al. 2015). The first Se hyperaccumulator plants were discovered in the 1930s when cattle disease ('Blind Staggers' *e.g.* selenosis) was associated with ingesting of high Se concentrations in some plant species in the Western United States (Trelease et al. 1936). These plants occurred on seleniferous soils derived from Cretaceous and Eocene shales (Beath et al. 1934). Of the Se hyperaccumulator plants subsequently discovered in the area, *Astragalus racemosus* has been the species with the highest Se concentrations, attaining up to $14,920 \mu\text{g Se g}^{-1} \text{DW}$ in its leaves (Knight and Beath 1937). Although the genus *Astragalus* (Fabaceae) contains the greatest number (25) of Se hyperaccumulator taxa described to date, Se hyperaccumulation occurs across 45 taxa in six different plant families (Cappa and Pilon-Smits 2014; White 2016), including species from the genera *Stanleya* (Brassicaceae), *Oenopsis*, *Xylorhiza*, *Symphotrichum* (Asteraceae), *Cardamine* (Brassicaceae), and *Neptunia* (Fabaceae) (Knott and McCray 1959; Rosenfeld and Beath 1964; El Mehdawi et al. 2014; White 2016).

The analytical determination of Se concentrations in plant tissues include destructive (*e.g.* ashing or wet acid digestion) and non-destructive (*e.g.* X-ray fluorescence analysis) techniques (Gei et al. 2018; Purwadi et al. 2021). Among the destructive techniques, wet acid digestion, which requires dried and ground plant tissue to be reacted with nitric acid at $\sim 125^\circ\text{C}$ (Shamberger 1983), is still the most commonly used today. After digestion, Se can then be measured in the resulting solution by Inductively coupled plasma atomic emission spectroscopy (ICP-AES) or ICP-mass spectroscopy (ICP-MS) (Reeves et al. 1996, 2007; Fernando et al. 2009; van der Ent and Reeves 2015). In contrast, non-destructive techniques include handheld X-ray fluorescence (XRF) for elemental screening of plant samples (Fig. 2). This technique utilises high-energy X-rays to impact a sample and analyses the spectrum of excited fluorescent X-rays, from which Se and its relative concentration can be determined (Purwadi et al. 2021). The main advantage is that this can be done on herbarium specimen collections, and as such a highly efficient botanical survey can be performed without the high costs, and sometimes complex logistics, of a field expedition (Gei et al. 2018). This approach has already been successful in doubling the number of trace element hyperaccumulator plant species known globally from

projects undertaken in New Caledonia, Malaysia, Papua New Guinea and the Neotropics (van der Ent et al. 2019a, b; Do et al. 2020; Gei et al. 2020; Belloeil et al. 2021). Although its potential to find new Se hyperaccumulators has yet to be fully tested, handheld XRF instruments appear as a time- and cost-effective tool for initial discoveries of Se accumulation in plants from existing plant collections held at herbaria (van der Ent et al. 2019a, b).

Whole plant and tissue/cellular distribution of selenium

The Se metabolism includes the processes of Se accumulation in different forms, storage of Se in different tissues, and eventually (partial) volatilisation (Peterson and Butler 1962; Rosenfeld and Beath 1964; Evans et al. 1968; Lewis and Johnson 1974). The biochemistry of Se affects not only the plant itself but also its ecological partners (El Mehdawi et al. 2011, 2015; Reynolds and Pilon-Smits 2018). Apart from destructive analysis of excised parts of plants, there are a number of in situ and/or in vivo techniques that can be utilised to elucidate the distribution of Se within whole plants and plant organs and cells. Autoradiography was one of the first approaches with high sensitivity that was used to study the ability of plants to uptake and translocate Se to different tissues (Rosenfeld and Beath 1964). In autoradiography, plants are grown in a substrate to which the radioisotope ^{75}Se is added and the emitted gamma rays are detected using analogue film or digital detectors (Martin et al. 1971). Although this approach allows the detection of only one element at a time, it facilitates the examination of large samples and hydrated plant tissues, thereby enabling the visualisation of Se distribution in live Se hyperaccumulator plants (Kopitke et al. 2020). Even though this method has been very useful in studying Se hyperaccumulator plants in the past (Rosenfeld and Eppson 1962; Martin et al. 1971; Goodson et al. 2003), regulatory constraints of the use of radioisotopes nowadays have greatly diminished its use. The advent of X-ray based techniques that work by detecting emitted fluorescent X-rays, have gained popularity due to their high-resolution and non-destructive nature and multi-element capability (van der Ent et al. 2018; Kopitke et al. 2018; 2020). The use of synchrotron-based X-ray Fluorescence Microscopy (XFM) has been particularly powerful in the study of Se hyperaccumulator plants (Freeman et al. 2006, 2010). Similar to the handheld XRF, this approach uses X-rays to impact a sample and generates an elemental map with the distribution of the elements of interest. A synchrotron is a very large particle accelerator in which electrons are guided through a storage ring to close the speed of light. At various positions in the storage ring, which can be several km in diameter, brilliant X-rays are produced by insertion devices which are guided to

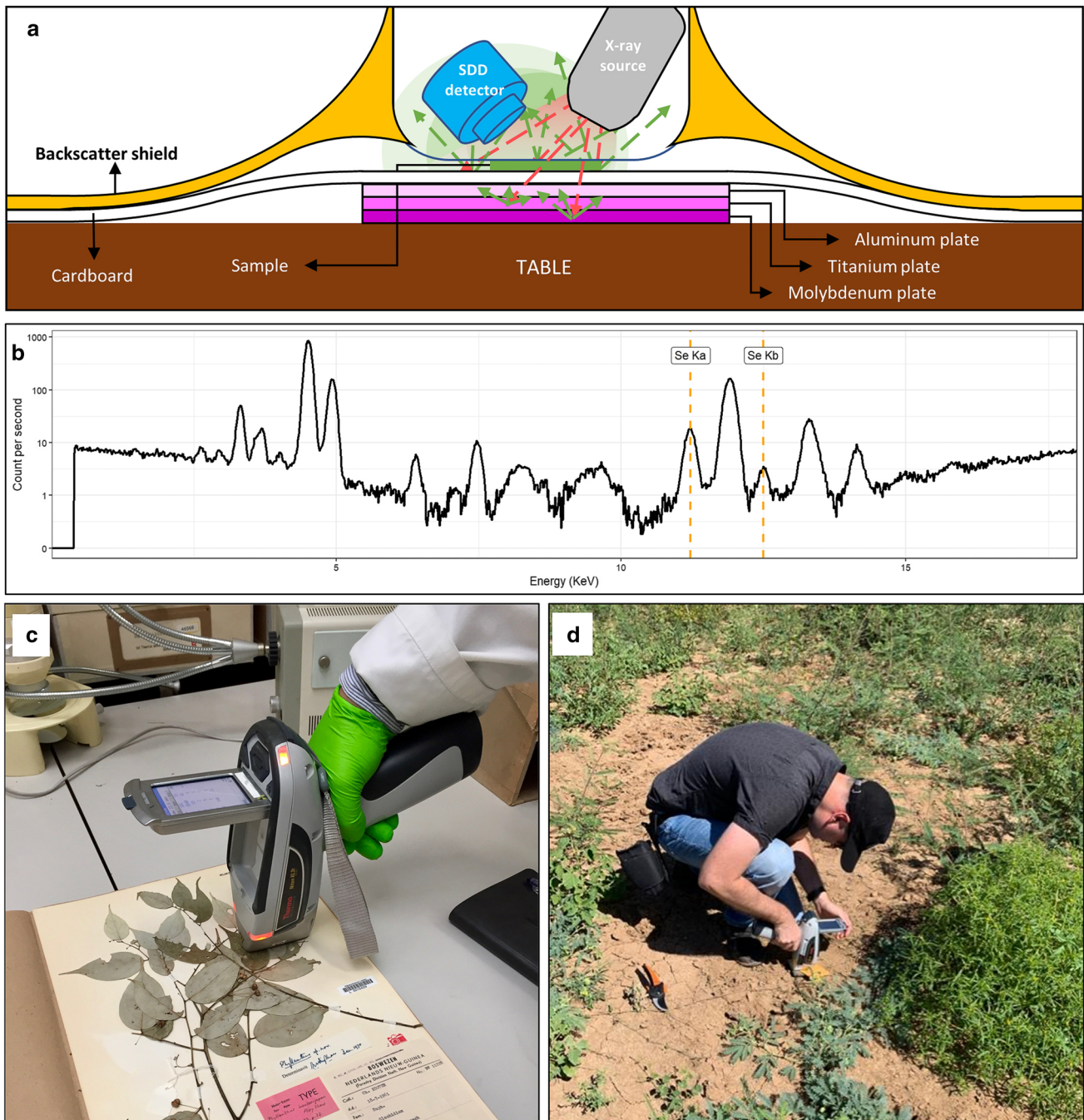


Fig. 2 Handheld XRF used in the discovery and analysis of Se hyper-accumulator plants in the field and herbarium. Scheme of X-rays impacting a sample and fluorescent X-rays emitted and recorded by the detector **a**, spectrum of excited fluorescent X-rays to calculate

relative Se concentration **b**, example of the use of handheld XRF in herbarium and field samples **c** and **d**, respectively. Schematic panel on top adapted from Purwadi et al. (2021)

so-called beam stations in which measurements take place. In the beam station, a plant sample is mounted in a plastic holder on a motion stage which moves the sample through the intense micron-sized beam of X-rays with the fluorescent X-rays recorded by a detector. This enables the construction of a pixel array of elemental concentrations *i.e.* ‘elemental

maps’. Uniquely, this method offers the ability to measure plant specimens in hydrated (live) state without any sample preparation and has high sensitivity ($< 10 \mu\text{g g}^{-1}$ level) and high spatial resolution ($< 1 \mu\text{m}$). In essence, a whole live plant or any part of a plant organ or sectioned tissue can be analysed “as is” with XFM. The instrumentation can also

determine chemical speciation of selected elements in vivo and even spatially using X-ray Absorption Spectroscopy (XAS), see below for more details (Kopittke et al. 2018). In contrast to analysis of whole plant organs probed at the tissue/cellular-scale, the (cryo)sectioning of samples for subcellular-level analysis is highly challenging due to the risk of significant artefacts, although newer XFM computed tomography (XFM-CT) methods enable to obtain 3D models of elemental distribution in physically intact specimens (van der Ent et al. 2018).

More recently, the development of laboratory-based XFM has been demonstrated to be an alternative to

synchrotron-based XFM, although it cannot yet compete in terms of spatial resolution or sensitivity and the ability to undertake in situ chemical speciation analysis (Fig. 3) (van der Ent et al. 2018). Recent technological developments have brought capabilities of this method closer to synchrotron-based XFM performance. Similarly, it can analyse specimens in fresh/live state and it offers the ability to scan large specimens (up to 30×30 cm) at high resolution (down to $20 \mu\text{m}$) with good sensitivity ($> 100 \mu\text{g g}^{-1}$ level) (Fig. 4). The local availability of laboratory-based XFM is particularly attractive for assessing live plants subjected to Se dose treatments (Harvey et al. 2020). Another X-ray based tool

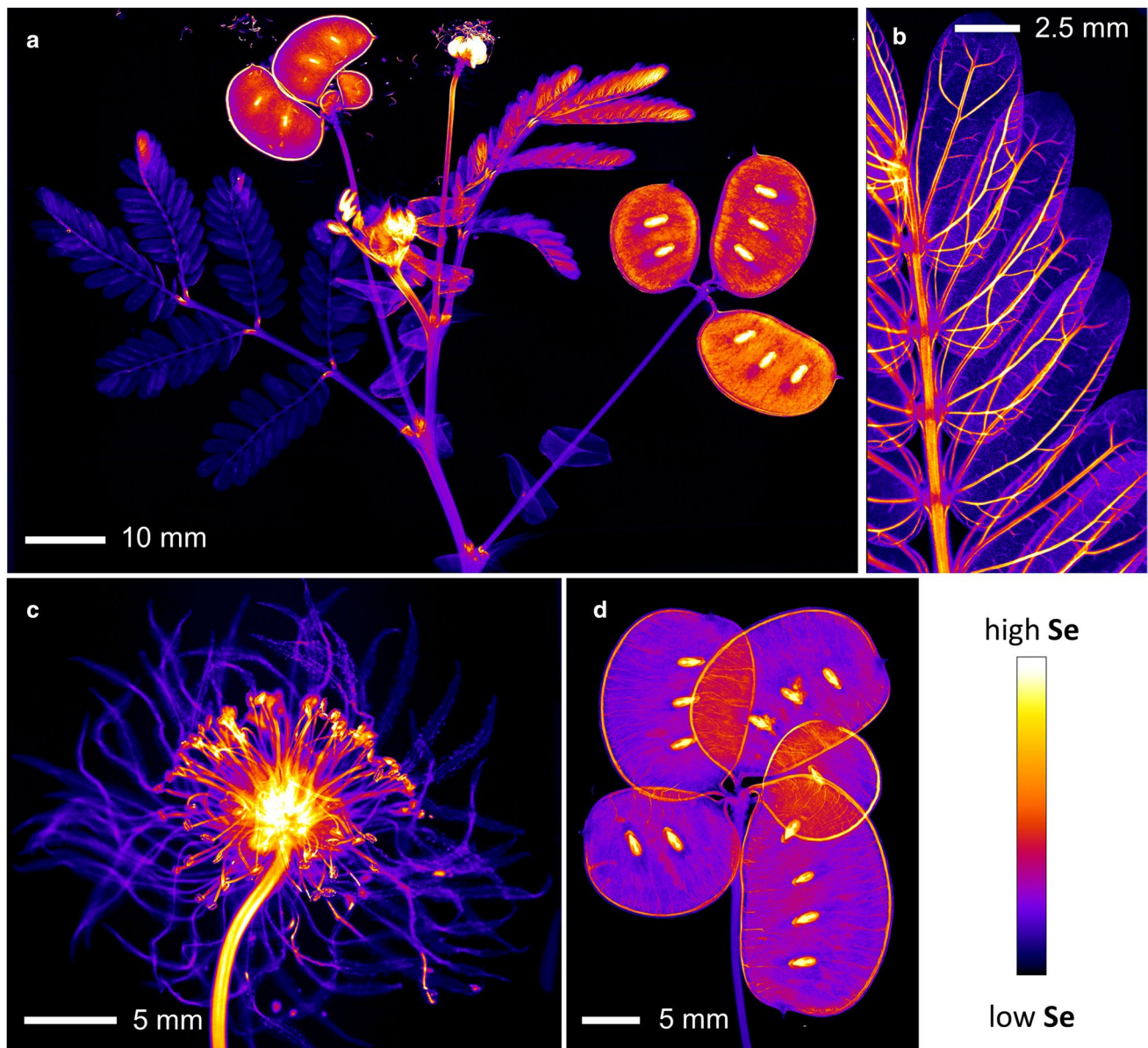


Fig. 3 Laboratory-based X-ray Fluorescence Microscopy (XFM) elemental maps of Se in *Neptunia amplexicaulis*. Panels: whole shoot **a**, leaf section **b**, flower **c** and seed pods **d**. Adapted from Harvey et al. (2020)

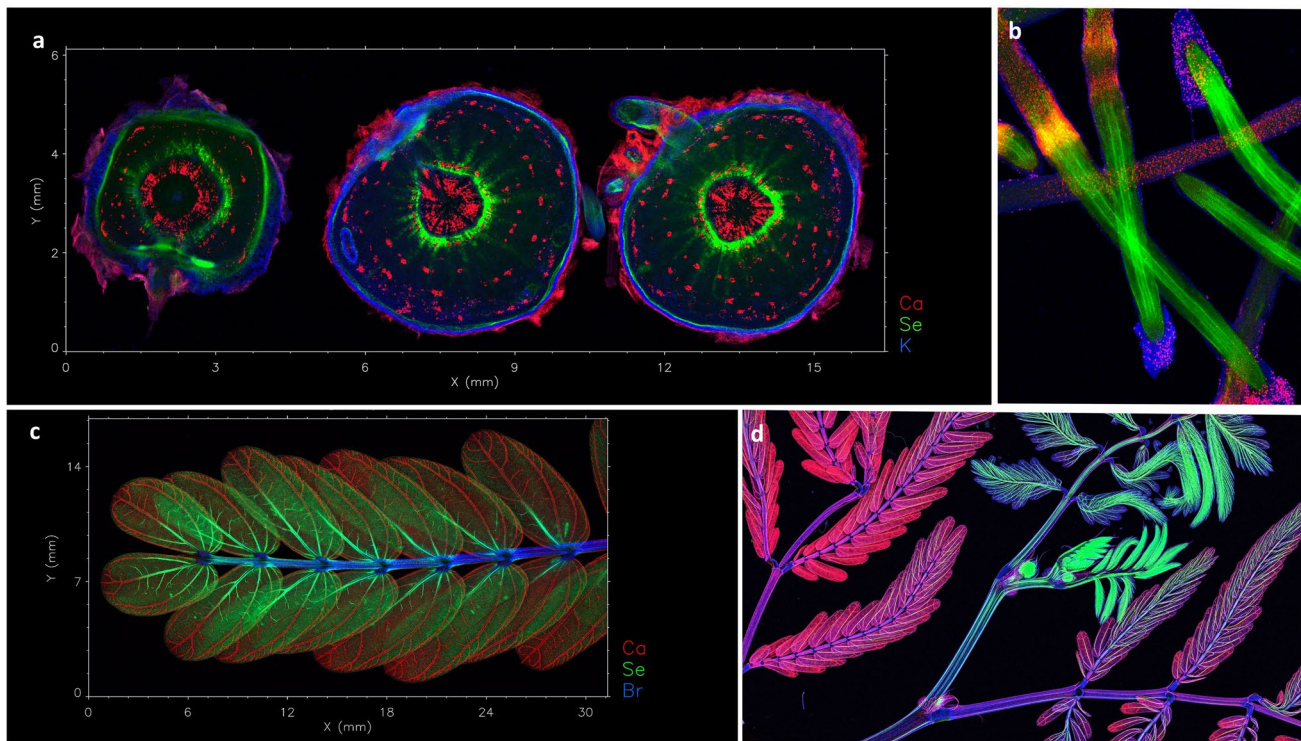


Fig. 4 Synchrotron-based X-ray Fluorescence Microscopy (XFM) elemental maps. Panel **a** Ca, Se and K in a fresh/hydrated root cross sections of *Neptunia amplexicaulis*; Panel **b** Ca, Se and Zn in fresh/hydrated root tips of *N. amplexicaulis*; Panel **c** Ca, Se and Br in a

fresh leaf of *N. amplexicaulis*; and Panel **d** Ca, Se and K in a fresh/hydrated whole shoot of *Neptunia gracilis*. Previously unpublished data (A. van der Ent) obtained at the X-ray Fluorescence Microscopy beamline of the Australian Synchrotron (part of ANSTO), Australia

that uses the emission of characteristic X-rays to detect Se and other elements is Scanning Electron Microscopy with Energy Dispersive Spectroscopy (SEM–EDS). Although SEM–EDS only allows semi-quantification and has relatively poor limits of detection, it can visualize very small particles of inorganic elements *e.g.* Se in high resolution (1–5 μm) in specific areas of interest, such as on leaf surfaces or in tissue cross-sections (Gei et al. 2018; van der Ent et al. 2018).

The technologies described above have greatly expanded our knowledge about Se distribution in Se hyperaccumulators (see for example, Freeman et al. 2006, 2010; Both et al. 2020; Harvey et al. 2020). Selenium distribution within the plant *e.g.* transport of different Se forms, depends on the plant species, developmental phases, and environmental conditions, such as Se concentrations in soil (Zhao et al. 2005; Li et al. 2008; Renkema et al. 2012). The highest Se concentration has generally been found in reproductive organs such as flowers, fruits, and seeds (Freeman et al. 2006; Quinn et al. 2011; Valdez Barillas et al. 2012; Harvey et al. 2020). This pattern seems to be a characteristic of Se hyperaccumulators because non-accumulators tend to accumulate more Se in the roots (White et al. 2007; Cappa et al. 2014). Another characteristic of Se hyperaccumulators is the high

accumulation of Se in young leaves compared to old leaves (Freeman et al. 2006, 2010). Stems and roots have also been identified as Se storage tissues, although the pattern differs among Se hyperaccumulator species. Apart from reproductive organs, the stem is the tissue with the highest Se concentration found in *A. bisulcatus*, followed by young leaves, whereas the roots have the lowest Se concentration (Valdez-Barillas et al. 2012). Additionally, *Neptunia amplexicaulis* accumulates higher Se concentration on average in the seed pods, followed by the young leaves and taproot (Harvey et al. 2020). The distribution pattern in hyperaccumulators, particularly in young leaves and reproductive organs, indicates that Se is transported through the phloem to sink organs during leaf maturation; this pattern has also been associated with defence against herbivore and/or pathogen attacks (Quinn et al. 2010).

When the spatial distribution of Se in leaves was investigated, the Se hyperaccumulators *A. bisulcatus* and *Stanleya pinnata* accumulated Se mostly in the leaf periphery. However, while in young leaves of *A. bisulcatus* Se was predominantly found in their trichomes, in young leaves of *S. pinnata* Se was localised in the epidermal cells near the leaf edges, in structures similar to vacuoles (Freeman et al. 2010). As observed in *S. pinnata*, low Se accumulation in

trichomes has also been found in *N. amplexicaulis*, although with high Se concentration in the vascular bundles (phloem) rather than in the leaf lamina (Harvey et al. 2020). The distribution of Se in the leaf edge of Se hyperaccumulators suggests a specific Se sequestration into these tissues, since this pattern has not been observed for other elements (Freeman et al. 2006). Furthermore, the localization of Se in the leaf periphery may be a distinguishing characteristic for Se hyperaccumulators, as this pattern is not observed in the non-accumulators *B. juncea* and *Arabidopsis thaliana*, for which Se is distributed in the vascular tissues and mesophyll cells (Van Hoewyk et al. 2005).

Unravelling chemical speciation of selenium in plants

Establishing the distribution of various Se chemical forms within a plant is a powerful method to uncover the pathways implicated in Se metabolism and the molecular mechanisms that underpin tolerance to Se toxicity (Freeman et al. 2006, 2010; Valdez-Barillas et al. 2012; Both et al. 2020). The chemical speciation of Se in plants can be analysed using synchrotron-based X-ray Absorption Spectroscopy (XAS), a non-destructive method that utilises a synchrotron X-ray beam to impact a sample which generates an X-ray absorption spectrum specific to the target element and the binding energies of its electrons (Abraham et al. 2020). The XAS spectrum can be divided into two main regions: the X-ray Absorption Near Edge Structure (XANES) and the Extended X-ray Absorption Fine Structure (EXAFS) energy regions. The XANES energy region of the generated spectrum indicates the coordination environment of the Se atom, and therefore can discriminate among Se species by revealing different spectra characteristic for the chemical forms of Se (Weekley et al. 2013; Weekley and Harris 2013). However, not all species can be identified by XANES, as several organic amino acids of Se (including SeMet, SeCys and MeSeCys) possess the same C-Se-C compound structure and generate essentially identical spectra; in most cases XANES is useful in distinguishing between inorganic and organic compounds (Weekley et al. 2013). Details of the distance, number and type of atoms around the central absorbing atom can be obtained through EXAFS analysis and has been able to identify the chemical state of Se species such as Se⁽⁰⁾, Se-Se and Se-S compounds (Wiramanaden et al. 2010; Weekley et al. 2014; Abraham et al. 2020). Although XAS analysis provides insight into the chemical speciation between organic and inorganic forms of Se, the most popular tool to investigate Se speciation is Liquid Chromatography coupled to Mass Spectrometry (LC-MS), an analytical technique based on the separation of target compound based on their size, followed by mass-spectrometry to separate

co-elutants according to mass-to-charge (*m/z*) ratio (Katajamaa and Orešič 2005; Xiao et al. 2012). Although LC-MS has allowed the identification of the different organic forms of Se, methods based on chromatography require extensive sample preparation that may affect speciation for which Se compounds are notoriously sensitive (Weekley et al. 2013).

The pathway of Se within hyperaccumulators ends with the volatilisation of DMSe and DMDSe, as part of the mechanism to remove Se and prevent toxicity (Draize et al. 1935; Lewis et al. 1966; Evans et al. 1968; Terry et al. 1992; Zayed et al. 1998; Terry et al. 2000; Van Huysen et al. 2003). To measure the rate of DMSe and DMDSe production, volatile compounds are usually collected in a trap (*e.g.* a bottle containing an alkaline solution) from a growth chamber where a plant is grown in Se-dosed nutrient solution. Selenium content is analysed using Atomic Absorption Spectroscopy (AAS), High Performance Liquid Chromatography (HPLC) coupled to Gas Chromatography (GC), or GC-MS, and, if ⁷⁵Se isotope is applied to the nutrient solution, scintillation detectors can be used to measure radioactivity and hence Se concentration.

Chemical speciation mapping of Se has been undertaken in *A. bisulcatus* and *S. pinnata* (Pickering et al. 2000; Freeman et al. 2006; Valdez-Barillas et al. 2012), and more recently in *N. amplexicaulis* (Harvey, unpublished) and *Cardamine violifolia* (Both et al. 2020). These studies have shown that the Se chemical speciation varies among organs and depends on the habitat where the plant was grown due to the influence of microbial interactions on the forms of Se within the plant (Valdez-Barillas et al. 2012). The main forms of Se are predominantly organo-seleno compounds, such as MeSeCys; γ -glutamyl-MeSeCys (*A. bisulcatus*) or selenocystathionine (SeCT; *S. pinnata*) in young leaves (Freeman et al. 2006, 2010). LC-MS analyses of *A. bisulcatus* tissues collected from its natural seleniferous habitat revealed that 50% of the Se contained in the stem was organic Se (C-Se-C), with the remainder elemental Se and SeO₃²⁻, whilst flowers accumulated primarily C-Se-C (90%) with small fractions of Se⁽⁰⁾ and SeO₃²⁻ (Valdez-Barillas et al. 2012). A high proportion of organic Se in hyperaccumulator plants suggests an active sulphate/selenite assimilation pathway to convert SeO₃²⁻ into organo-seleno compounds (Schiavon and Pilon-Smits 2017). Further Se chemical speciation studies on *A. bisulcatus* and *S. pinnata* growing in its natural habitat showed that up to 35% of Se was in the form of elemental Se (Se⁰) which has been attributed to microbial interactions with Se-reducing bacteria (Lindblom et al. 2013). XANES analyses on young *N. amplexicaulis* revealed that MeSeCys and SeMet occur in similar proportions in young leaves, while selenodiglutathione (Se(GSH)₂) was the main Se chemical species in the root (40%) (Harvey et al. 2020). Studies performed on the Se hyperaccumulator *C. violifolia* and the non-accumulator

Cardamine pratensis revealed that the main chemical form of Se in the hyperaccumulator were C-Se-C forms, whilst the non-accumulator contained more SeO_4^{2-} (Both et al. 2020). Similar observations have been reported when comparing *A. bisulcatus* and *S. pinnata* to related non-accumulator species, with the non-accumulator plants containing a higher proportion of inorganic of Se (Freeman et al. 2006; Alford et al. 2014).

In Se hyperaccumulator plants, the observed organic forms of Se in their young leaves and the inorganic forms (SeO_4^{2-}) in old leaves suggest a translocation from old leaves via the phloem in the form of MeSeCys (Freeman et al. 2006). Further identification of Se chemical species have been performed in leaves of Se hyperaccumulators and XANES and LC-MS analysis of *A. bisulcatus* trichomes revealed a high proportion of Se in organic form, specifically MeSeCys and γ -glutamyl-MeSeCys (Freeman et al. 2006). This suggests that trichomes in this species were a site for sequestration and storage, or for the synthesis of organo-seleno compounds (Freeman et al. 2006). Apart from trichomes, the presence of SeO_4^{2-} , SeO_3^{2-} , MeSeCys, and γ -glutamyl-MeSeCys is suggestive of SeO_4^{2-} reduction and for incorporation of Se into organo-seleno compounds in young leaves (Freeman et al. 2006). Around the edges of *S. pinnata* young leaves, Se was present as MeSeCys (88%) and SeCT (12%) (Freeman et al. 2006). Selenium chemical speciation has also been investigated in seeds of *A. bisulcatus* and *S. pinnata*, where XANES analysis has identified SeCys in *S. pinnata*, and MeSeCys and γ -glutamyl-MeSeCys in *A. bisulcatus* (Freeman et al. 2012).

Volatilisation experiments to measure the rate of DMDSe or DMSe production have shown that hyperaccumulator plants are able to eliminate Se through expelling it in gaseous form through the leaves (Zayed et al. 1998; de Souza et al. 2000; Terry et al. 1992, 2000;). The first findings of Se volatilization were reported in *A. bisulcatus* (Draize et al. 1935). Further studies on the Se hyperaccumulator *Astragalus racemosus* and the non-accumulator *Medicago sativa* revealed that the synthesis of volatile Se compounds is not restricted to Se hyperaccumulator species alone (Lewis et al. 1966). In this case, both species were able to produce DMDSe or DMSe even at low Se doses, and the increased rates of volatilisation are correlated to Se concentrations in plant tissues and the chemical form of Se that was applied (Lewis et al. 1966; Terry et al. 1992; Zayed et al. 1998). Additional studies have shown that Se volatilisation occurs in the leaves mainly as DMSe in crop species (Lewis 1974; de Souza et al. 2000) and as DMDSe in Se hyperaccumulator plants (Evans et al. 1968). Studies aimed to decipher the metabolic pathways of Se volatilisation revealed an increased volatilisation rate in transgenic *B. juncea* that overexpressed cystathionine- γ -synthase (CGS) (Van Huysen et al. 2003).

Genome-scale approaches for studying selenium metabolism

The molecular biology underlying Se acquisition, transport and metabolism can be investigated using genome-scale approaches (Corso et al. 2020). However, genome-scale data remain scarcely available from Se hyperaccumulator plants (see Huang et al. 2021). Given the diversity of the taxa involved, generation of genome data requires de novo assembly and ab initio gene prediction. The continuing advancement and increased affordability of high-throughput sequencing technologies is enabling data generation at lower costs and at scale previously unimaginable. Short-read sequencing data (e.g. from Illumina) that are more cost-efficient can be combined with long-read sequencing data (e.g. from PacBio and Oxford Nanopore) that are better in resolving repetitive sequence regions in a hybrid approach to generate a more-contiguous assembly (Zimin et al. 2017; Antipov et al. 2016). Especially if such assembled whole-genome sequence is annotated with the location of (predicted) genes, based on whole transcriptome sequences, it can be a very valuable genetic tool for comparative genome analysis of Se hyperaccumulators and closely related non-accumulators. Comparison of whole-genome sequences elucidates conservation and loss of (micro)synteny, providing clues on genome evolution underlying phenotypic differences between species (Hammond et al. 2006; Weber et al. 2006). These data also provide valuable information on small sequence variations e.g. single nucleotide polymorphism, and insertion-deletion, to be used as molecular markers, as well as larger structural variations e.g. gene copy-number variations, and large chromosomal rearrangements contributing to phylogenetic divergence and potential acquisition of new traits (Talke et al. 2006; van de Mortel et al. 2006). Full-length transcripts, to be used in genome annotation and comparative transcriptomics, can be achieved using long-read sequencing technology, e.g. through the reconstruction of transcript isoforms (Gao et al. 2019). Transcriptome, proteome and/or metabolome profiles from tissues grown in distinct conditions or treatments enable comprehensive assessments of differentially expressed biomolecules (i.e. genes, proteins, or metabolites) and their functions in metabolic pathways.

The use of genome-scale approaches is enhancing our understanding of the molecular responses and mechanisms that underpin Se metabolism in the hyperaccumulators. In *Cardamine ensiensis*, the analyses of genome, transcriptome and metabolome data revealed a whole-genome duplication event and other segmental duplications, an enrichment of functions implicated in Se metabolism pathways among the duplicated genes, and changes in the patterns of chromatin interactions in response to Se treatment (Huang

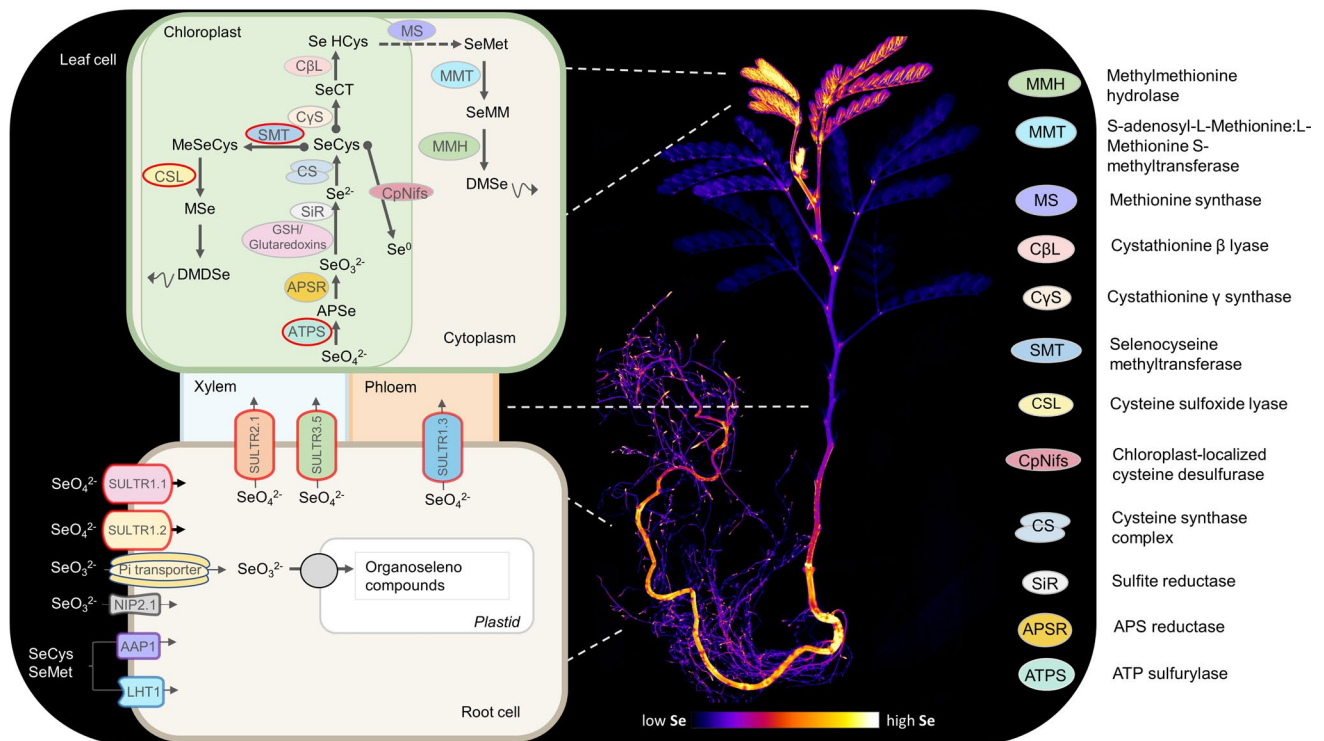


Fig. 5 Schematic model of selenium uptake, transport, and metabolism in Se hyperaccumulator plants and map of Se distribution in *Neptunia amplexicaulis* obtained with laboratory-based X-ray fluorescence microscopy (Harvey et al. 2020). Red circles indicate high constitutive gene expression. *SULTR* sulfate/selenate transporter; *Pi transporter* phosphate inorganic transporter; *NIP2.1* Aquaporin

et al. 2021). In an early transcriptome analysis (Freeman et al. 2010), genes coding for distinct *SULTRs* that are implicated in uptake and transport of sulphate and SeO_4^{2-} , were found to be constitutively highly expressed in roots and shoots of the Se hyperaccumulator *S. pinnata*, in contrast to the secondary accumulator *Stanleya albescens*. This is considered an advantage for Se and S uptake and has been related to an increase in Se or S concentration in the plant (Cabannes et al. 2011; El Mehdawi et al. 2018; Wang et al. 2018). Furthermore, hyperaccumulators and non-accumulators from the genus *Astragalus* have been shown to have a high constitutive expression of *SULTRs*, regardless of the Se or S concentration in the substrate (Cabannes et al. 2011). The concentrations of Se and S in the substrate do, however, often have an impact on the regulation of *SULTRs*, indicating that high constitutive expression is not the rule for all hyperaccumulator plants, and not for all *SULTRs* (White et al. 2004; Cabannes et al. 2011; Schiavon et al. 2015; El Mehdawi et al. 2018). For example, studies of *S. pinnata* exposed to 20 μM of SeO_4^{2-} showed a reduction in the expression of genes encoding *SULTR1.1* and *SULTR1.2* responsible for the uptake of SeO_4^{2-} , compared to control plants grown without Se (Schiavon et al. 2015).

channel 2.1; *AAP1* amino acid permease; *LHT1* *AAP1* homolog; *APSe* denosine phosphoselenate; *GSH* glutathione; *SeCT* Selenocystathionine; *SeHCys* Selenohomocysteine; *SeCys* Selenocysteine; *SeMet* Selenomethionine; *MSe* Methaneselenol; *SMM* Se-methyl selenomethionine; *DMS* Dimethylselenide; *DMSSe* Dimethydiselenide

A more-recent study of the hyperaccumulator *C. violifolia* revealed that eight *SULTR* genes are upregulated in high Se conditions compared to the control conditions, suggesting that these genes might contribute to elevated Se uptake and translocation in this species (Rao et al. 2020).

Once Se is transported into the cell, it can be assimilated into amino acids using S assimilation pathways (Fig. 5) (Schiavon et al. 2017; White et al. 2004; Sors et al. 2005; Bulteau and Chavatte 2015). Transcriptome studies have shown a high constitutive expression of these pathways in Se hyperaccumulators, specifically the enzyme ATPS that catalyses the reduction of SeO_4^{2-} to form APSe (Leustek 1994; Sors et al. 2005; Pilon-Smits et al. 2009; Schiavon et al. 2015). The gene coding for the isoform ATPS2 that is localised in both the plastid and cytosol showed a higher expression in *S. pinnata* roots and leaves compared to non-accumulator *Stanleya elata*, implicating a molecular response related to hypertolerance and hyperaccumulation in *S. pinnata* (Schiavon et al. 2015; Wang et al. 2018). Selenocysteine methyltransferase (SMT) that methylates *SeCys* to form *MeSeCys* has been found to be constitutively highly expressed in hyperaccumulators (Pickering et al. 2003; Pilon-Smits 2012). Although SMT has been identified in

several *Astragalus* species including non-accumulators, its functional isoform has been found only in Se hyperaccumulator plants (Neuhierl and Böck 1996; Neuhierl et al. 1999; Sors et al. 2009), explaining the high proportion of MeSeCys in these species (Neuhierl et al. 1999; Pickering et al. 2003; Sors et al. 2005; Freeman et al. 2006, 2010). Furthermore, the upregulation of antioxidant activity is thought to be a strategy to cope with oxidative damage caused by Se excess (Freeman et al. 2010). Moreover, the constitutive up-regulation of genes associated with the biosynthesis of or response to phytohormones, *e.g.* methyl jasmonic acid, jasmonic acid, ethylene, and salicylic acid (SA) in *S. pinnata* shoots and roots suggests that the signalling of defence-related phytohormones is tightly linked to Se metabolism (Freeman et al. 2010).

A recent transcriptome analysis of the Se hyperaccumulator *C. violifolia* revealed different metabolic pathways implicated in the Se metabolism and detoxification in this species (Rao et al. 2020). The involvement of adenylyl-sulphate kinases and a phosphoadenosine phosphosulfate reductase family protein was postulated as an alternative pathway to reduce SeO_4^{2-} to SeO_3^{2-} in *C. violifolia*, due to their up-regulation in the plants grown in Se-enriched medium (Rao et al. 2020). Furthermore, homocysteine S-methyltransferase (HMT) that participates in the pathway to convert homocysteine into methionine in plants was suggested as an analogue of SMT due to their shared sequence similarity, thus HMT may also be involved in the methylation of SeCys (Lyi et al. 2007). The degradation of SeMet catalysed by Met- γ -lyase (MGL), and the degradation of SeCys into elemental Se mediated by Cys desulfurase, are likely pathways that underpin mechanisms of tolerance in *C. violifolia* (Rao et al. 2020).

Importantly, genome-scale techniques provide the basis for functional validation of candidate genes, *e.g.* via transgenic approaches to reconstruct a working model of Se metabolism in plants (Pilon-Smits et al. 1999; Sors et al. 2005; LeDuc et al. 2006; Van Hoewyk 2013). The overexpression of the APSR enzyme in *A. thaliana* increased Se flux through the plant and SeO_4^{2-} reduction into organic forms (Sors et al. 2005); the overexpression of CpNifS increased tolerance and accumulation of Se (Van Hoewyk 2013). Several genes coding for enzymes implicated in Se tolerance have been described in *Brassica juncea*, and the overexpression of *ATPS1* in *A. thaliana* were shown to enhance the reduction rate of SeO_4^{2-} into organic forms (Pilon-Smits et al. 1999); increased accumulation of Se was observed when *APSR* and *SMT* were simultaneously overexpressed (LeDuc et al. 2006). Additionally, the constitutive expression of cystathionine- γ -synthase (C γ S) from *A. thaliana* in *B. juncea*, was correlated to an increase in the Se volatilisation rate (Van Huysen et al. 2003). These studies support the role of APSR, ATPS, CpNifS and SMT in the

mechanisms of tolerance and accumulation in hyperaccumulators, and in genetically engineered non-accumulators.

Conclusions and outlook

Current research using microanalytical and molecular biology techniques are enhancing our understanding of Se accumulation and tolerance in hyperaccumulator plants (Table 1). These plants exhibit enhanced Se uptake and translocation rates from the root to the shoot compared to the non-accumulators, patterns associated with a constitutively upregulation of genes coding for sulphate transporters. Chemical speciation studies have revealed that C-Se-C compounds, such as MeSeCys, are the prevalent form of Se in hyperaccumulators, compared to inorganic Se forms in non-accumulator plants. This is supported by the consecutively high expression of genes encoding for ATPS and SMT in hyperaccumulators plants which implicate an effective strategy to cope with Se toxicity. Studies on the distribution of Se in hyperaccumulator plants revealed Se sequestration in leaf margins, vacuoles and trichomes, a pattern distinct from that of other elements including S. Further research is needed to determine whether these strategies involve specific transporters and pathways for Se. The knowledge-base gained from this body of work provides the basis for future research to enhance our understanding of the biology, biochemistry, ecophysiology, and evolution of Se hyperaccumulator plants. Insights from the patterns of Se distribution and chemical speciation coupled to genome-scale data from a more diverse range of hyperaccumulator plants will further enhance the model of molecular and evolutionary mechanisms that underpin Se metabolism and tolerance in plants. The integration of microanalytical and genome-scale molecular biology techniques provides a powerful platform to discover novel gene functions or metabolic pathways, as well as conserved (and unique) genome and gene features, in distinct lineages of hyperaccumulator plants. For example, comparative studies of genome and transcriptome coupled with analysis of the chemical speciation in specific tissues will reveal the location where the key steps of Se metabolism are taking place in the plant. In addition, the largely unexplored role of root-associated microbiomes in Se accumulation, particularly in legume hyperaccumulators (such as *Astragalus* spp. and *N. amplexicaulis*), can be further investigated using metagenomic approaches, in which microbial diversity and their involvement in Se acquisition in the plant can be assessed based on metagenome-assembled genomes and/or meta-transcriptome data. The advent of rapid non-destructive methods will enable the discovery of novel Se hyperaccumulator taxa via high-throughput of herbarium collections, and how Se hyperaccumulation impacts evolution and diversification of these taxa. Although

Table 1 Summary of techniques and main findings in most studied Se hyperaccumulators species

	Approach		Species			
			<i>Astragalus bisulcatus</i>	<i>Stanleya pinnata</i>	<i>Cardamine violifolia</i>	<i>Neptunia amplexicaulis</i>
Se accumulation and distribution	ICP-AES		Up to 13,685 $\mu\text{g Se g}^{-1}$ DW in leaves (Sura-de Jong et al. 2015)	>4000 $\mu\text{g Se g}^{-1}$ DW in young leaves (Galeas et al. 2006)	3700 $\mu\text{g Se g}^{-1}$ DW in leaves (Both et al. 2018)	13,600 $\mu\text{g Se g}^{-1}$ DW in young leaves (Harvey et al. 2020)
	SEM-EDS		Selenium concentrated in trichomes in young leaves (Freeman et al. 2006)	Selenium concentrated in vacuoles of epidermal cells (Freeman et al. 2010)	Unknown	Selenium concentrated in veins of young leaves (Harvey et al. 2020)
	Laboratory XFM		Unknown	Unknown	Unknown	Highest concentration in seed pods, young leaves and tap root (Harvey et al. 2020)
Chemical speciation	Synchrotron XFM		Selenium concentrated in trichomes of leaf edges (Freeman et al. 2006)	High concentration in leaf edges (Freeman et al. 2006)	Selenium concentrated in root and shoot apical meristems (Both et al. 2020)	Unknown
	XAS		MeSeCys in trichomes (Freeman et al. 2006)	MeSeCys in globular structures in leaves (Freeman et al. 2006)	Mainly organic Se with a C-Se-C configuration in the shoot (Both et al. 2020)	MeSeCys and SeMet in similar proportions in young leaves (Harvey et al. 2020)
Molecular mechanisms	LC-MS		MeSeCys and γ -glutamyl-MeSeCys in trichomes (Freeman et al. 2006)	MeSeCys (88%) and SeCT (12%) in leaf edges (Freeman et al. 2006)	Mainly selenolanthionine (Both et al. 2018)	MeSeCys and SeMet in the leaves (Harvey et al. 2020)
	Transcriptomic analyses		High constitutive expression of <i>SULTR</i> transporters (Cabannes et al. 2011)	High constitutive expression of Se metabolism related enzymes (Freeman et al. 2010)	Up-regulation of ASKs and a PAPS family protein (Rao et al. 2020)	Unknown

competitive access to synchrotron facilities presents a limitation for many researchers, the development of cutting-edge laboratory-based instrumentation for elemental mapping will partly meet this demand. Overall, the analytical and molecular approaches presented here will enhance our understanding of Se metabolic pathways and ultimately support biofortification strategies of edible crops to address Se deficiency in humans.

Author contribution statement

KPI wrote and edited the manuscript. MAH, HHH, MGMA CXC and PDE reviewed and edited the manuscript. AVDE reviewed, edited, and supervised the investigation.

Acknowledgements K. Pinto Irish is the recipient of a UQ Graduate School Scholarship (UQGSS) from The University of Queensland. M-A. Harvey is the recipient of a UQ Graduate School Research Training Program Scholarship. We thank Lachlan Casey (University of Queensland) for support with the laboratory-based X-ray Fluorescence Microscopy analysis. We acknowledge the support of the AMMRF at the Center for Microscopy and Microanalysis (CMM). This research was undertaken on the X-ray Fluorescence Microscopy beamline of the Australian Synchrotron (part of ANSTO), Victoria, Australia. H. H. Harris acknowledges support from an Australian Research Council Discovery Project (DP200102670). This project was also supported by a UQ Genome Innovation Hub Collaborative Project and ARC Discovery Project DP190102474 awarded to CXC.

Funding Open Access funding enabled and organized by CAUL and its Member Institutions. No funding was received for conducting this study.

Data availability The datasets generated during and/or analysed during the current study are available from the corresponding author on reasonable request.

Declarations

Conflict of interest The authors have no conflict of interest to declare that are relevant to the content of this article.

Open Access This article is licensed under a Creative Commons Attribution 4.0 International License, which permits use, sharing, adaptation, distribution and reproduction in any medium or format, as long as you give appropriate credit to the original author(s) and the source, provide a link to the Creative Commons licence, and indicate if changes were made. The images or other third party material in this article are included in the article's Creative Commons licence, unless indicated otherwise in a credit line to the material. If material is not included in the article's Creative Commons licence and your intended use is not permitted by statutory regulation or exceeds the permitted use, you will need to obtain permission directly from the copyright holder. To view a copy of this licence, visit <http://creativecommons.org/licenses/by/4.0/>.

References

- Abraham J, Jose B, Jose A, Thomas S (2020) Chapter 2 - Characterization of green nanoparticles from plants. In: Thajuddin N, Mathew S (eds) *Phytonanotechnology*. Elsevier, pp 21–39
- Alford ER, Lindblom SD, Pittarello M, Freeman JL, Fakra SC, Marcus MA, Broeckling C, Pilon-Smits EA, Paschke MW (2014) Roles of rhizobial symbionts in selenium hyperaccumulation in *Astragalus* (Fabaceae). *Am J Bot* 101(11):1895–1905. <https://doi.org/10.3732/ajb.1400223>
- Anderson J (1993) Selenium interactions in sulfur metabolism. Sulfur nutrition and assimilation in higher plants: Regulatory, agricultural and environmental aspects, SPB Academic Publishing, The Hague, The Netherlands, pp 49–60
- Antipov D, Korobeynikov A, McLean JS, Pevzner PA (2016) hybrid-SPAdes: an algorithm for hybrid assembly of short and long reads. *Bioinformatics* 32(7):1009–1015. <https://doi.org/10.1093/bioinformatics/btv688>
- Bañuelos G, Ajwa H, Terry N, Zayed A (1997) Phytoremediation of selenium laden soils: a new technology. *J Soil Water Conserv* 52(6):426–430
- Beath O, Draize JH, Eppson H, Gilbert C, McCreary O (1934) Certain poisonous plants of Wyoming activated by selenium, and their association with respect to soil types. *J Am Pharm Assoc* 23:94–97. <https://doi.org/10.1002/jps.3080230204>
- Belloeil C, Jouannais P, Malfaisan C, Fernández RRR, Lopez S, Navarrete Gutierrez DM, Maeder-Pras S, Villanueva P, Tisserand T, Gallopin M, Alfonso-Gonzalez D, Fuentes Marrero IS, Muller S, Invernon V, Pillon Y, Echevarria G, Berazaín Iturralde R, Merlot S (2021) The X-ray fluorescence screening of multiple elements in herbarium specimens from the Neotropical region reveals new records of metal accumulation in plants. *Metallomics* 13(8):mfab045. <https://doi.org/10.1093/mtomcs/mfab045>
- Bogdanova N, Hell R (1997) Cysteine synthesis in plants: protein-protein interactions of serine acetyltransferase from *Arabidopsis thaliana*. *Plant J* 11(2):251–262. <https://doi.org/10.1046/j.1365-3113x.1997.11020251.x>
- Both EB, Shao S, Xiang J, Jókai Z, Yin H, Liu Y, Magyar A, Dernovics M (2018) Selenolanthionine is the major water-soluble selenium compound in the selenium tolerant plant *Cardamine violifolia*. *Biochim Biophys Acta Gen Subj* 11:2354–2362. <https://doi.org/10.1016/j.bbagen.2018.01.006>
- Both EB, Stonehouse GC, Lima LW, Fakra SC, Aguirre B, Wangelin AL, Xiang J, Yin H, Jókai Z, Soos A, Dernovics M, Pilon-Smits EAH (2020) Selenium tolerance, accumulation, localization and speciation in a *Cardamine* hyperaccumulator and a non-hyperaccumulator. *Sci Total Environ* 703:135041. <https://doi.org/10.1016/j.scitotenv.2019.135041>
- Brown TA, Shrift A (1982) Selenium: toxicity and tolerance in higher plants. *Biol Rev* 57(1):59–84. <https://doi.org/10.1111/j.1469-185X.1982.tb00364.x>
- Bulteau A-L, Chavatte L (2015) Update on selenoprotein biosynthesis. *Antiox Redox Signal* 23(10):775–794. <https://doi.org/10.1089/ars.2015.6391>
- Cabannes E, Buchner P, Broadley MR, Hawkesford MJ (2011) A comparison of sulfate and selenium accumulation in relation to the expression of sulfate transporter genes in *Astragalus* species. *Plant Physiol* 157(4):2227–2239. <https://doi.org/10.1104/pp.111.183897>
- Cappa JJ, Cappa PJ, El Mehdawi AF, McAleer JM, Simmons MP, Pilon-Smits EA (2014) Characterization of selenium and sulfur accumulation across the genus *Stanleya* (Brassicaceae): A field survey and common-garden experiment. *Am J Bot* 101(5):830–839. <https://doi.org/10.3732/ajb.1400041>

- Cappa JJ, Yetter C, Fakra S, Cappa PJ, DeTar R, Landes C, Pilon-Smits EAH, Simmons MP (2015) Evolution of selenium hyperaccumulation in *Stanleya* (Brassicaceae) as inferred from phylogeny, physiology and X-ray microprobe analysis. *New Phytol* 205:583–595. <https://doi.org/10.1111/nph.13071>
- Corso M, de la Torre VSG (2020) Biomolecular approaches to understanding metal tolerance and hyperaccumulation in plants. *Metallomics* 12(6):840–859. <https://doi.org/10.1039/d0mt00043d>
- de Souza MP, Lytle CM, Mulholland MM, Otte ML, Terry N (2000) Selenium assimilation and volatilization from dimethylselenoniopropionate by Indian mustard. *Plant Physiol* 122(4):1281–1288. <https://doi.org/10.1104/pp.122.4.1281>
- Do C, Abubakari F, Brown G, Casey LW, Burtet-Sarramegna V, Gei V, Erskine PD, van der Ent A (2020) A preliminary survey of hyperaccumulation in the Papua New Guinean flora from herbarium XRF scanning. *Chemoecology* 30(1):1–13. <https://doi.org/10.1007/s00049-019-00293-1>
- Draize J, Beath O (1935) Observations on the pathology of blind staggers and alkali disease. *J Am Vet Med Assoc* 39:753–763
- Dumont E, Vanhaecke F, Cornelis R (2006) Selenium speciation from food source to metabolites: a critical review. *Anal Bioanal Chem* 385(7):1304–1323. <https://doi.org/10.1007/s00216-006-0529-8>
- El Mehdawi AF, Quinn CF, Pilon-Smits EAH (2011) Effects of selenium hyperaccumulation on plant-plant interactions: evidence for elemental allelopathy? *New Phytol* 191(1):120–131. <https://doi.org/10.1111/j.1469-8137.2011.03670.x>
- El Mehdawi AF, Reynolds RJB, Prins CN, Lindblom SD, Cappa JJ, Fakra SC, Pilon-Smits EA (2014) Analysis of selenium accumulation, speciation and tolerance of potential selenium hyperaccumulator *Symphytotrichum ericoides*. *Physiol Plant* 152(1):70–83. <https://doi.org/10.1111/ppl.12149>
- El Mehdawi AF, Paschke MW, Pilon-Smits EAH (2015) *Symphytotrichum ericoides* populations from seleniferous and nonseleniferous soil display striking variation in selenium accumulation. *New Phytol* 206(1):231–242. <https://doi.org/10.1111/nph.13164>
- El Mehdawi AF, Jiang Y, Guignardi ZS, Esmat A, Pilon M, Pilon-Smits EAH, Schiavon M (2018) Influence of sulfate supply on selenium uptake dynamics and expression of sulfate/selenate transporters in selenium hyperaccumulator and nonhyperaccumulator Brassicaceae. *New Phytol* 217(1):194–205. <https://doi.org/10.1111/nph.14838>
- Evans CS, Asher CJ, Johnson CM (1968) Isolation of dimethyl diselenide and other volatile selenium compounds from *Astragalus racemosus* (Pursh). *Aust J Biol Sci* 21(1):13–20. <https://doi.org/10.1071/BI9680013>
- Fernando DR, Guymer G, Reeves RD, Woodrow IE, Baker AJ, Batiannoff GN (2009) Foliar Mn accumulation in eastern Australian herbarium specimens: prospecting for 'new' Mn hyperaccumulators and potential applications in taxonomy. *Ann Bot* 103(6):931–939. <https://doi.org/10.1093/aob/mcp013>
- Fordyce FM (2013) Selenium deficiency and toxicity in the environment. In: Selinus O (ed) *Essentials of medical geology*. Springer, pp 375–416
- Freeman JL, Zhang LH, Marcus MA, Fakra S, McGrath SP, Pilon-Smits EAH (2006) Spatial imaging, speciation, and quantification of selenium in the Hyperaccumulator plants *Astragalus bisulcatus* and *Stanleya pinnata*. *Plant Physiol* 142(1):124–134. <https://doi.org/10.1104/pp.106.081158>
- Freeman JL, Tamaoki M, Stushnoff C, Quinn CF, Cappa JJ, Devonshire J, Fakra SC, Marcus MA, McGrath SP, Van Hoewyk D, Pilon-Smits EA (2010) Molecular mechanisms of selenium tolerance and hyperaccumulation in *Stanleya pinnata*. *Plant Physiol* 153(4):1630–1652. <https://doi.org/10.1104/pp.110.156570>
- Freeman JL, Marcus MA, Fakra SC, Devonshire J, McGrath SP, Quinn CF, Pilon-Smits EA (2012) Selenium hyperaccumulator plants *Stanleya pinnata* and *Astragalus bisulcatus* are colonized by Se-resistant, Se-excluding wasp and beetle seed herbivores. *PLoS ONE* 7(12):e50516. <https://doi.org/10.1371/journal.pone.0050516>
- Gao Y, Xi F, Liu X, Wang H, Reddy AS, Gu L (2019) Single-molecule Real-time (SMRT) Isoform Sequencing (Iso-Seq) in plants: the status of the bioinformatics tools to unravel the transcriptome complexity. *Curr Bioinform* 14(7):566–573. <https://doi.org/10.2174/1574893614666190204151746>
- Gei V, Erskine PD, Harris HH, Echevarria G, Mesjasz-Przybyłowicz J, Barnabas AD, Przybyłowicz WJ, Kopitke PM, van der Ent A (2018) Tools for the Discovery of Hyperaccumulator Plant Species and Understanding Their Ecophysiology. In: Van der Ent A, Echevarria G, Baker AJM, Morel JL (eds) *Agromining: Farming for Metals: Extracting Unconventional Resources Using Plants*. Springer International Publishing, Cham, pp 117–133. https://doi.org/10.1007/978-3-319-61899-9_7
- Gei V, Erskine PD, Echevarria G, Isnard S, Fogliani B, Jaffré T, van der Ent A (2020) A systematic assessment of the occurrence of trace element hyperaccumulation in the flora of New Caledonia. *Bot J Linn Soc* 194(1):1–22. <https://doi.org/10.1093/botlinnean/boaa029>
- Galeas ML, Zhang LH, Freeman JL, Wegner M, Pilon-Smits EAH (2007) Seasonal fluctuations of selenium and sulfur accumulation in selenium hyperaccumulators and related nonaccumulators. *New Phytol* 173:517–525. <https://doi.org/10.1111/j.1469-8137.2006.01943.x>
- Goodson CC, Parker DR, Amrhein C, Zhang Y (2003) Soil selenium uptake and root system development in plant taxa differing in Se-accumulating capability. *New Phytol* 159:391–401
- Hammond JP, Bowen HC, White PJ, Mills V, Pyke KA, Baker AJM, Whiting SN, May ST, Broadley MR (2006) A comparison of the *Thlaspi caerulescens* and *Thlaspi arvense* shoot transcriptomes. *New Phytol* 170(2):239–260. <https://doi.org/10.1111/j.1469-8137.2006.01662.x>
- Harvey MA, Erskine PD, Harris HH, Brown GK, Pilon-Smits EAH, Casey LW, Echevarria G, van der Ent A (2020) Distribution and chemical form of selenium in *Neptunia amplexicaulis* from Central Queensland. *Australia Metallomics* 12(4):514–527. <https://doi.org/10.1039/c9mt00244h>
- Haug A, Graham RD, Christophersen OA, Lyons GH (2007) How to use the world's scarce selenium resources efficiently to increase the selenium concentration in food. *Microb Ecol Health Dis* 19(4):209–228. <https://doi.org/10.1080/08910600701698986>
- Hsieh HS, Ganther HE (1975) Acid-volatile selenium formation catalyzed by glutathione reductase. *Biochemistry* 14(8):1632–1636. <https://doi.org/10.1021/bi00679a014>
- Huang C, Ying H, Yang X, Gao Y, Li T, Wu B, Ren M, Zhang Z, Ding J, Gao J, Wen D, Ye X, Liu L, Wang H, Sun G, Zou Y, Chen N, Wang L (2021) The *Cardamine ensliensis* genome reveals whole genome duplication and insight into selenium hyperaccumulation and tolerance. *Cell Discov* 7(1):62. <https://doi.org/10.1038/s41421-021-00286-x>
- Katajamaa M, Orešič M (2005) Processing methods for differential analysis of LC/MS profile data. *BMC Bioinformatics* 6(1):1–12. <https://doi.org/10.1186/1471-2105-6-179>
- Kieliszek M, Błażej S (2013) Selenium: significance, and outlook for supplementation. *Nutrition* 29(5):713–718. <https://doi.org/10.1016/j.nut.2012.11.012>
- Knight SH, Beath OA (1937) The occurrence of selenium and seleniferous vegetation in Wyoming. University of Wyoming Agricultural Experiment Station Bulletin 221. University of Wyoming, Laramie

- Knott S, McCray C (1959) Two naturally occurring outbreaks of selenium in Queensland. *Aust Vet J* 35(4):161–165. <https://doi.org/10.1111/j.1751-0813.1959.tb08462.x>
- Kopittke PM, Punshon T, Paterson DJ, Tappero RV, Wang P, Blamey FPC, van der Ent A, Lombi E (2018) Synchrotron-based x-ray fluorescence microscopy as a technique for imaging of elements in plants. *Plant Physiol* 178(2):507–523. <https://doi.org/10.1104/pp.18.00759>
- Kopittke PM, Lombi E, van der Ent A, Wang P, Laird JS, Moore KL, Persson DP, Husted S (2020) Methods to visualize elements in plants. *Plant Physiol* 182(4):1869–1882. <https://doi.org/10.1104/pp.19.01306>
- LeDuc DL, AbdelSamie M, Montes-Bayon M, Wu CP, Reisinger SJ, Terry N (2006) Overexpressing both ATP sulfurylase and selenocysteine methyltransferase enhances selenium phytoremediation traits in Indian mustard. *Environ Pollut* 144(1):70–76. <https://doi.org/10.1016/j.envpol.2006.01.00>
- Leustek T, Murillo M, Cervantes M (1994) Cloning of a cDNA encoding ATP sulfurylase from *Arabidopsis thaliana* by functional expression in *Saccharomyces cerevisiae*. *Plant Physiol* 105(3):897–902. <https://doi.org/10.1104/pp.105.3.897>
- Lewis BG, Johnson C, Delwiche C (1966) Release of volatile selenium compounds by plants. Collection procedures and preliminary observations. *J Agric Food Chem* 14(6):638–640. <https://doi.org/10.1021/jf60148a027>
- Lewis B, Johnson C, Broyer T (1974) Volatile selenium in higher plants the production of dimethyl selenide in cabbage leaves by enzymatic cleavage of Se-methyl selenomethionine selenonium salt. *Plant Soil* 40(1):107–118. <https://doi.org/10.1007/BF00011413>
- Li HF, McGrath SP, Zhao FJ (2008) Selenium uptake, translocation and speciation in wheat supplied with selenate or selenite. *New Phytol* 178(1):92–102. <https://doi.org/10.1111/j.1469-8137.2007.02343.x>
- Lindblom SD, Fakra SC, Landon J, Schulz P, Tracy B, Pilon-Smits EA (2013) Inoculation of *Astragalus racemosus* and *Astragalus convallarius* with selenium-hyperaccumulator rhizosphere fungi affects growth and selenium accumulation. *Planta* 237(3):717–729. <https://doi.org/10.1007/s00425-012-1789-5>
- Lyi SM, Zhou X, Kochian LV, Li L (2007) Biochemical and molecular characterization of the homocysteine S-methyltransferase from broccoli (*Brassica oleracea* var. *italica*). *Phytochemistry* 68(8):1112–1119. <https://doi.org/10.1016/j.phytochem.2007.02.007>
- Malagoli M, Schiavon M, Pilon-Smits EA (2015) Effects of selenium biofortification on crop nutritional quality. *Front Plant Sci* 21(6):280. <https://doi.org/10.3389/fpls.2015.00280>
- Martin J, Shrift A, Gerlach ML (1971) Use of ⁷⁵Se-selenite for the study of selenium metabolism in *Astragalus*. *Phytochemistry* 10(5):945–952. [https://doi.org/10.1016/S0031-9422\(00\)89922-7](https://doi.org/10.1016/S0031-9422(00)89922-7)
- Mikkelsen R, Page A, Bingham F (1989) Factors affecting selenium accumulation by agricultural crops. In: Jacobs LW (Ed) Selenium in Agriculture and the Environment. Soil Science Society of America, Special Publication, pp 65–94. <https://doi.org/10.2136/sssaspecpub23.c4>
- Neuhierl B, Böck A (1996) On the mechanism of selenium tolerance in selenium-accumulating plants: purification and characterization of a specific selenocysteine methyltransferase from cultured cells of *Astragalus bisculatus*. *Eur J Biochem* 239(1):235–238. <https://doi.org/10.1111/j.1432-1033.1996.0235u.x>
- Neuhierl B, Thanbichler M, Lottspeich F, Böck A (1999) A family of S-methylmethionine-dependent thiol/selenol methyltransferases: role in selenium tolerance and evolutionary relation. *J Biol Chem* 274(9):5407–5414. <https://doi.org/10.1074/jbc.274.9.5407>
- Peterson PJ, Butler GW (1962) The uptake and assimilation of selenite by higher plants. *Aust J Biol Sci* 15:126. <https://doi.org/10.1071/bi9620126>
- Pickering IJ, Prince RC, Salt DE, George GN (2000) Quantitative, chemically specific imaging of selenium transformation in plants. *Proc Natl Acad Sci* 97(20):10717–10722. <https://doi.org/10.1073/pnas.200244597>
- Pickering IJ, Hirsch G, Prince RC, Sneed EY, Salt DE, George GN (2003) Imaging of selenium in plants using tapered metal monochromator optics. *J Synchrotron Radiat* 10(3):289–290. <https://doi.org/10.1107/s0909049503003273>
- Pilon-Smits EA (2012) Plant selenium metabolism—genetic manipulation, phytotechnological applications, and ecological implications. In: Wong MH (ed) Environmental contamination: Health risks, bioavailability and bioremediation, 1st edn. Taylor and Francis, Abingdon, UK, pp 293–311
- Pilon-Smits EA, LeDuc DL (2009) Phytoremediation of selenium using transgenic plants. *Curr Opin Biotechnol* 20(2):207–212. <https://doi.org/10.1016/j.copbio.2009.02.001>
- Pilon-Smits EA, Hwang S, Mel Lytle C, Zhu Y, Tai JC, Bravo RC, Chen Y, Leustek T, Terry N (1999) Overexpression of ATP sulfurylase in Indian mustard leads to increased selenate uptake, reduction, and tolerance. *Plant Physiol* 119(1):123–132. <https://doi.org/10.1104/pp.119.1.123>
- Pilon-Smits EA, Garifullina GF, Abdel-Ghany S, Kato S-I, Mihara H, Hale KL, Burkhead JL, Esaki N, Kurihara T, Pilon M (2002) Characterization of a NiFS-like chloroplast protein from *Arabidopsis*. Implications for its role in sulfur and selenium metabolism. *Plant Physiol* 130(3):1309–1318. <https://doi.org/10.1104/pp.102.010280>
- Plant JA, Kinniburgh DG, Smedley PL, Fordyce FM, Klinck BA (2003) 9.02 - Arsenic and Selenium. In: Holland HD, Turekian KK (eds) Treatise on Geochemistry. Pergamon, Oxford, pp 17–66. <https://doi.org/10.1016/B0-08-043751-6/09047-2>
- Purwadi I, Gei V, Echevarria G, Erskine PD, Mesjasz-Przybyłowicz J, Przybyłowicz WJ, van der Ent A (2021) Tools for the Discovery of Hyperaccumulator Plant Species in the Field and in the Herbarium. In: van der Ent A, Baker AJM, Echevarria G, Simonnot M-O, Morel JL (eds) Agromining: Farming for Metals: Extracting Unconventional Resources Using Plants. Springer International Publishing, Cham, pp 183–195. https://doi.org/10.1007/978-3-030-58904-2_9
- Quinn CF, Freeman JL, Reynolds RJ, Cappa JJ, Fakra SC, Marcus MA, Lindblom SD, Quinn EK, Bennett LE, Pilon-Smits EA (2010) Selenium hyperaccumulation offers protection from cell disruptor herbivores. *BMC Ecol* 10(1):1–11. <https://doi.org/10.1186/1472-6785-10-19>
- Quinn CF, Prins CN, Freeman JL, Gross AM, Hantzis LJ, Reynolds RJ, in Yang S, Covey PA, Bañuelos GS, Pickering IJ, (2011) Selenium accumulation in flowers and its effects on pollination. *New Phytol* 192(3):727–737. <https://doi.org/10.1111/j.1469-8137.2011.03832.x>
- Rao S, Yu T, Cong X, Xu F, Lai XZ, Zhang WW, Liao YL, Cheng SY (2020) Integration analysis of PacBio SMRT- and Illumina RNA-seq reveals candidate genes and pathway involved in selenium metabolism in hyperaccumulator *Cardamine violifolia*. *BMC Plant Biol* 20(1):20. <https://doi.org/10.1186/s12870-020-02694-9>
- Rayman MP, Winther KH, Pastor-Barriuso R, Cold F, Thvilum M, Stranges S, Guallar E, Cold S (2018) Effect of long-term selenium supplementation on mortality: results from a multiple-dose, randomised controlled trial. *Free Radic Biol Med* 27:46–54. <https://doi.org/10.1016/j.freeradbiomed.2018.02.015>
- Reeves R, Baker A, Borhidi A, Berazain R (1996) Nickel-accumulating plants from the ancient serpentine soils of Cuba. *New Phytol* 133(2):217–224. <https://doi.org/10.1111/j.1469-8137.1996.tb01888.x>
- Reeves R, Baker A, Becquer T, Echevarria G, Miranda Z (2007) The flora and biogeochemistry of the ultramafic soils of Goiás state.

- Brazil Plant Soil 293(1):107–119. <https://doi.org/10.1007/s11104-007-9192-x>
- Renkema H, Koopmans A, Kersbergen L, Kikkert J, Hale B, Berkeelaar E (2012) The effect of transpiration on selenium uptake and mobility in durum wheat and spring canola. *Plant Soil* 354(1):239–250
- Reynolds RJB, Pilon-Smits EAH (2018) Plant selenium hyperaccumulation- ecological effects and potential implications for selenium cycling and community structure. *Biochim Biophys Acta Gen Subj* 11:2372–2382. <https://doi.org/10.1016/j.bbagen.2018.04.018>
- Rosenfeld I, Beath OA (1964) Accumulation of selenium by plants. In: *Selenium: Geobotany, Biochemistry, Toxicity, and Nutrition*. Academic Press, New York pp 91–140.
- Rosenfeld I, Eppson HF (1962) Translocation of radioactive selenium in *Astragalus bisulcatus*. *Univ Wyoming Agric Exp Sta Bull No* 385:21–25
- Schiavon M, Pilon-Smits EA (2017) The fascinating facets of plant selenium accumulation—biochemistry, physiology, evolution and ecology. *New Phytol* 213(4):1582–1596. <https://doi.org/10.1111/nph.14378>
- Schiavon M, Pilon M, Malagoli M, Pilon-Smits EA (2015) Exploring the importance of sulfate transporters and ATP sulphurylases for selenium hyperaccumulation—a comparison of *Stanleya pinnata* and *Brassica juncea* (Brassicaceae). *Front Plant Sci*. <https://doi.org/10.3389/fpls.2015.00002>
- Schwarz K, Foltz CM (1957) Selenium as an integral part of factor 3 against dietary liver necrosis. *J Am Chem Soc* 79:3292–3293. <https://doi.org/10.1021/ja01569a087>
- Shamberger RJ (1983) Analytical Methods of Selenium Determination. In: Shamberger RJ (ed) *Biochemistry of Selenium*. Springer, Boston, MA, pp 311–327
- Sors TG, Ellis DR, Salt DE (2005) Selenium uptake, translocation, assimilation and metabolic fate in plants. *Photosynth Res* 86(3):373–389. <https://doi.org/10.1007/s11120-005-5222-9>
- Sors TG, Martin CP, Salt DE (2009) Characterization of selenocysteine methyltransferases from *Astragalus* species with contrasting selenium accumulation capacity. *Plant J* 59(1):110–122. <https://doi.org/10.1111/j.1365-3113X.2009.03855.x>
- Sura-de Jong M, Reynolds RJ, Richterova K, Musilova L, Staicu LC, Chocholata I, Cappa JJ, Taghavi S, van der Lelie D, Frantík T, Dolinova I, Strojček M, Cochran AT, Lovecka P, Pilon-Smits EA (2015) Selenium hyperaccumulators harbor a diverse endophytic bacterial community characterized by high selenium resistance and plant growth promoting properties. *Front Plant Sci* 6:113. <https://doi.org/10.3389/fpls.2015.00113>
- Talke IN, Hanikenne M, Kramer U (2006) Zinc-dependent global transcriptional control, transcriptional deregulation, and higher gene copy number for genes in metal homeostasis of the hyperaccumulator *Arabidopsis halleri*. *Plant Physiol* 142(1):148–167. <https://doi.org/10.1104/pp.105.076232>
- Terry N, Carlson C, Raab T, Zayed AM (1992) Rates of selenium volatilization among crop species. *J Environ Qual* 21:341–344. <https://doi.org/10.2134/jeq1992.00472425002100030006x>
- Terry N, Zayed A, De Souza M, Tarun A (2000) Selenium in higher plants. *Annu Rev Plant Physiol Plant Mol Biol* 51(1):401–432. <https://doi.org/10.1146/annurev.arplant.51.1.401>
- Trelease SF, Martin AL (1936) Plants made poisonous by selenium absorbed from the soil. *Bot Rev* 2(7):373–396. <https://doi.org/10.1007/BF02870153>
- Valdez Barillas JR, Quinn CF, Freeman JL, Lindblom SD, Fakra SC, Marcus MA, Gilligan TM, Alford ÉR, Wangeline AL, Pilon-Smits EA (2012) Selenium distribution and speciation in the hyperaccumulator *Astragalus bisulcatus* and associated ecological partners. *Plant Physiol* 159(4):1834–1844. <https://doi.org/10.1104/pp.112.199307>
- van de Mortel JE, Almar Villanueva L, Schat H, Kwekkeboom J, Coughlan S, Moerland PD, Loren V, van Themaat E, Koornneef M, Aarts MGM (2006) Large expression differences in genes for iron and zinc homeostasis, stress response, and lignin biosynthesis distinguish roots of *Arabidopsis thaliana* and the related metal hyperaccumulator *Thlaspi caerulescens*. *Plant Physiol* 142(3):1127–1147. <https://doi.org/10.1104/pp.106.082073>
- van der Ent A, Reeves RD (2015) Foliar metal accumulation in plants from copper-rich ultramafic outcrops: case studies from Malaysia and Brazil. *Plant Soil* 389(1):401–418. <https://doi.org/10.1007/s11104-015-2385-9>
- van der Ent A, Przybyłowicz WJ, de Jonge MD, Harris HH, Ryan CG, Tylko G, Paterson DJ, Barnabas AD, Kopitke PM, Mesjasz-Przybyłowicz J (2018) X-ray elemental mapping techniques for elucidating the ecophysiology of hyperaccumulator plants. *New Phytol* 218(2):432–452. <https://doi.org/10.1111/nph.14810>
- van der Ent A, Echevarria G, Pollard AJ, Erskine PD (2019a) X-ray fluorescence ionomics of herbarium collections. *Sci Rep* 9(1):1–5. <https://doi.org/10.1038/s41598-019-40050-6>
- van der Ent A, Ocenar A, Tisserand R, Sugau JB, Erskine PD, Echevarria G (2019b) Herbarium X-ray fluorescence screening for nickel, cobalt and manganese hyperaccumulation in the flora of Sabah (Malaysia, Borneo Island). *J Geochem Explor* 202:49–58. <https://doi.org/10.1016/j.gexplo.2019.03.013>
- Van Hoewyk D (2013) A tale of two toxicities: malformed selenoproteins and oxidative stress both contribute to selenium stress in plants. *Ann Bot* 112(6):965–972. <https://doi.org/10.1093/aob/mct163>
- Van Hoewyk D, Garifullina GF, Ackley AR, Abdel-Ghany SE, Marcus MA, Fakra S, Ishiyama K, Inoue E, Pilon M, Takahashi H (2005) Overexpression of AtCpNifS enhances selenium tolerance and accumulation in *Arabidopsis*. *Plant Physiol* 139(3):1518–1528. <https://doi.org/10.1104/pp.105.068684>
- Van Huysen T, Abdel-Ghany S, Hale KL, LeDuc D, Terry N, Pilon-Smits EA (2003) Overexpression of cystathionine-gamma-synthase enhances selenium volatilization in *Brassica juncea*. *Planta* 218(1):71–78. <https://doi.org/10.1007/s00425-003-1070-z>
- Wang J, Cappa JJ, Harris JP, Edger PP, Zhou W, Pires JC, Adair M, Unruh SA, Simmons MP, Schiavon M, Pilon-Smits EAH (2018) Transcriptome-wide comparison of selenium hyperaccumulator and nonaccumulator *Stanleya* species provides new insight into key processes mediating the hyperaccumulation syndrome. *Plant Biotechnol J*. <https://doi.org/10.1111/pbi.12897>
- Weber M, Trampczynska A, Clemens S (2006) Comparative transcriptome analysis of toxic metal responses in *Arabidopsis thaliana* and the Cd(2+)-hypertolerant facultative metallophyte *Arabidopsis halleri*. *Plant Cell Environ* 29(5):950–963. <https://doi.org/10.1111/j.1365-3040.2005.01479.x>
- Weekley CM, Harris HH (2013) Which form is that? The importance of selenium speciation and metabolism in the prevention and treatment of disease. *Chem Soc Rev* 42(23):8870–8894. <https://doi.org/10.1039/c3cs60272a>
- Weekley CM, Aitken JB, Finney L, Vogt S, Witting PK, Harris HH (2013) Selenium metabolism in cancer cells: the combined application of XAS and XFM techniques to the problem of selenium speciation in biological systems. *Nutrients* 5(5):1734–1756. <https://doi.org/10.3390/nu5051734>
- Weekley CM, Aitken JB, Witting PK, Harris HH (2014) XAS studies of Se speciation in selenite-fed rats. *Metallomics* 6(12):2193–2203. <https://doi.org/10.1039/c4mt00227j>
- White PJ (2018) Selenium metabolism in plants. *Biochim Biophys Acta Gen Subj* 1862(11):2333–2342. <https://doi.org/10.1016/j.bbagen.2018.05.006>

- White PJ, Bowen HC, Parmaguru P, Fritz M, Spracklen W, Spiby R, Meacham M, Mead A, Harriman M, Trueman L (2004) Interactions between selenium and sulphur nutrition in *Arabidopsis thaliana*. *J Exp Bot* 55(404):1927–1937. <https://doi.org/10.1093/jxb/erh192>
- White PJ, Bowen HC, Marshall B, Broadley MR (2007) Extraordinarily high leaf selenium to sulfur ratios define ‘Se-accumulator’ plants. *Ann Bot* 100(1):111–118. <https://doi.org/10.1093/aob/mcm084>
- White PJ (2016) Selenium accumulation by plants. *Ann Bot* 117(2):217–235. <https://doi.org/10.1093/aob/mcv180>
- WHO (2009) Global health risks: mortality and burden of disease attributable to selected major risks. World Health Organization, <https://apps.who.int/iris/handle/10665/44203>
- Winkel LH, Johnson CA, Lenz M, Grundl T, Leupin OX, Amini M, Charlet L (2012) Environmental selenium research: from microscopic processes to global understanding. *Environ Sci Technol* 46(2):571–579. <https://doi.org/10.1021/es203434d>
- Wiramanaden CI, Liber K, Pickering IJ (2010) Selenium speciation in whole sediment using X-ray absorption spectroscopy and micro X-ray fluorescence imaging. *Environ Sci Technol* 44(14):5389–5394. <https://doi.org/10.1021/es100822z>
- Wu Z, Bañuelos GS, Lin Z-Q, Liu Y, Yuan L, Yin X, Li M (2015) Biofortification and phytoremediation of selenium in China. *Fron Plant Sci* 20(6):136. <https://doi.org/10.3389/fpls.2015.00136>
- Xiao JF, Zhou B, Ressom HW (2012) Metabolite identification and quantitation in LC-MS/MS-based metabolomics. *Trends Analyt Chem* 32:1–14. <https://doi.org/10.1016/j.trac.2011.08.009>
- Zayed A, Lytle CM, Terry N (1998) Accumulation and volatilization of different chemical species of selenium by plants. *Planta* 206(2):284–292. <https://doi.org/10.1007/s004250050402>
- Zhang B, Pasini R, Dan H, Joshi N, Zhao Y, Leustek T, Zheng ZL (2014) Aberrant gene expression in the *Arabidopsis* *SULTR1;2* mutants suggests a possible regulatory role for this sulfate transporter in response to sulfur nutrient status. *Plant J* 77(2):185–197. <https://doi.org/10.1111/tpj.12376>
- Zhao C, Ren J, Xue C, Lin E (2005) Study on the relationship between soil selenium and plant selenium uptake. *Plant Soil* 277(1):197–206. <https://doi.org/10.1007/s11104-005-7011-9>
- Zimin AV, Puiu D, Luo MC, Zhu T, Koren S, Yorke JA, Dvorak J, Salzberg S (2017) Hybrid assembly of the large and highly repetitive genome of *Aegilops tauschii*, a progenitor of bread wheat, with the mega-reads algorithm. *Genome Res* 27(5):787–792. <https://doi.org/10.1101/gr.213405.116>

Publisher's Note Springer Nature remains neutral with regard to jurisdictional claims in published maps and institutional affiliations.