




## ORIGINAL PAPER

# Myeloperoxidase creates a permissive microenvironmental niche for the progression of multiple myeloma

Connor M. D. Williams<sup>1,2</sup> | Jacqueline E. Noll<sup>1,2</sup> | Alanah L. Bradey<sup>1,2</sup> |  
 Jvaughn Duggan<sup>1,2</sup> | Vicki J. Wilczek<sup>1,2</sup> | Makutiro G. Masavuli<sup>3</sup> | Branka Grubor-Bauk<sup>3</sup> |  
 Romana A. Panagopoulos<sup>2,4</sup> | Duncan R. Hewett<sup>1,2</sup> | Krzysztof M. Mrozik<sup>1,2</sup> |  
 Andrew C. W. Zannettino<sup>1,2</sup>  | Kate Vandyke<sup>1,2</sup>  | Vasilios Panagopoulos<sup>1,2</sup> 

<sup>1</sup>Myeloma Research Laboratory, Faculty of Health and Medical Sciences, School of Biomedicine, University of Adelaide, Adelaide, Australia

<sup>2</sup>Solid Tumour Program, Precision Cancer Medicine Theme, South Australian Health and Medical Research Institute, Adelaide, Australia

<sup>3</sup>Viral Immunology Group, Discipline of Surgery, Basil Hetzel Institute for Translational Health Research, University of Adelaide, Adelaide, Australia

<sup>4</sup>Breast Cancer Research Unit, Discipline of Surgery, Basil Hetzel Institute for Translational Health Research, University of Adelaide, Adelaide, Australia

## Correspondence

Vasilios Panagopoulos, Myeloma Research Laboratory, Faculty of Health and Medical Sciences, School of Biomedicine, University of Adelaide, Adelaide, Australia.  
 Email: [bill.panagopoulos@adelaide.edu.au](mailto:bill.panagopoulos@adelaide.edu.au)

## Funding information

National Health and Medical Research Council, Grant/Award Number: 1160000; Cancer Australia, Grant/Award Number: 2021451; Cancer Council SA Beat Cancer Project; The Hospital Research Foundation Group; Veronika Sacco Clinical Cancer Research Fellowship

## Summary

Expression of myeloperoxidase (MPO), a key inflammatory enzyme restricted to myeloid cells, is negatively associated with the development of solid tumours. Activated myeloid cell populations are increased in multiple myeloma (MM); however, the functional consequences of myeloid-derived MPO within the myeloma microenvironment are unknown. Here, the role of MPO in MM pathogenesis was investigated, and the capacity for pharmacological inhibition of MPO to impede MM progression was evaluated. In the 5TGM1-KaLwRij mouse model of myeloma, the early stages of tumour development were associated with an increase in CD11b<sup>+</sup> myeloid cell populations and an increase in *Mpo* expression within the bone marrow (BM). Interestingly, MM tumour cell homing was increased towards sites of elevated myeloid cell numbers and MPO activity within the BM. Mechanistically, MPO induced the expression of key MM growth factors, resulting in tumour cell proliferation and suppressed cytotoxic T-cell activity. Notably, tumour growth studies in mice treated with a small-molecule irreversible inhibitor of MPO (4-ABAH) demonstrated a significant reduction in overall MM tumour burden. Taken together, our data demonstrate that MPO contributes to MM tumour growth, and that MPO-specific inhibitors may provide a new therapeutic strategy to limit MM disease progression.

## KEYWORDS

immune suppression, multiple myeloma, myeloid-derived suppressor cells, myeloperoxidase

## INTRODUCTION

Multiple myeloma (MM) is an aggressive haematological malignancy characterised by the uncontrolled proliferation

of plasma cells (PCs) within the bone marrow (BM). Despite recent advances in therapeutic strategies, patients will ultimately relapse, with only 50% of patients surviving 5 years following diagnosis.<sup>1,2</sup> While intrinsic genetic factors are

Connor M. D. Williams and Jacqueline E. Noll, contributed equally to this work.

Kate Vandyke and Vasilios Panagopoulos are co-senior authors.

This is an open access article under the terms of the [Creative Commons Attribution](https://creativecommons.org/licenses/by/4.0/) License, which permits use, distribution and reproduction in any medium, provided the original work is properly cited.

© 2023 The Authors. *British Journal of Haematology* published by British Society for Haematology and John Wiley & Sons Ltd.

known to play a key role in MM pathogenesis, recent studies have highlighted the critical role of the BM microenvironment in regulating immune evasion, disease progression and persistence.<sup>3–7</sup>

The BM niche is rich in cellular components that support the survival and proliferation of malignant PCs.<sup>8–10</sup> Studies have identified chronic inflammation and dysregulation of the immune environment within the tumour microenvironment as supportive of cancer development and progression.<sup>11,12</sup> Immunosuppressive myeloid-derived suppressor cells (MDSCs; a heterogeneous population of immature myeloid cells) have emerged as negative regulators of disease progression in advanced MM disease.<sup>13–17</sup> Both monocytic and granulocytic MDSCs accumulate in the BM of MM patients and tumour-bearing mice, with increased levels correlating with disease stage and poor prognosis.<sup>14,15</sup> A notable hallmark of MDSC-dependent immunosuppression in cancer is the production of reactive oxygen species (ROS), which leads to impeded CD8+ T-cell proliferation<sup>18</sup> and interferon (IFN) responsiveness.<sup>19</sup> However, the precise mechanisms by which these inflammatory myeloid cells support the growth of MM remain to be determined.

Myeloperoxidase (MPO), a well-characterised, neutrophil-derived haem-containing peroxidase, produces strong reactive oxidants contributing to its antimicrobial action.<sup>16,17</sup> We have previously reported new biological roles for MPO as a key regulator of fibrosis and angiogenesis, which contribute to cancer development and progression.<sup>20,21</sup> Furthermore, increased MPO activity is reported to be associated with early-stage development of lung and breast cancer and drives tumour metastasis.<sup>20,22</sup> In haematological malignancies, MPO is reported to have prognostic value in B-cell acute lymphoblastic leukaemia, with elevated expression being associated with relapse and poor event-free survival.<sup>23</sup> Notably, in a preclinical model of lymphoma, *Mpo* mRNA was found to be expressed over 57-fold higher in granulocytic MDSCs when compared with normal neutrophils isolated from tumour-bearing or naive mice, respectively,<sup>24</sup> suggesting that granulocytic MDSCs are a rich source of MPO in cancer. However, a causal role for MPO in haematological malignancies has not yet been described.

In this study, we show increased myeloid cell-derived MPO is associated with MM development in vivo. Specifically, elevated levels of localised MPO activity within the BM supports MM PC homing and MM tumour growth. Furthermore, MPO upregulates the expression of key MM-supportive genes in BM stromal cells and reduces tumour-specific T-cell activity in vitro. Importantly, targeting MPO with the potent irreversible inhibitor, 4-aminobenzoic acid hydrazide (4-ABAH), significantly reduced MM tumour burden in the 5TGM1-KaLwRij mouse model of MM. Taken together, these findings provide proof-of-concept data that MPO contributes to MM development and is a viable therapeutic target for the treatment of MM.

## MATERIALS AND METHODS

### 5TGM1-KaLwRij mouse model of myeloma

The use of animals was approved by the South Australian Health and Medical Research Institute (SAHMRI) Animal Ethics Committee (SAM-20-022). Mice were bred and housed within the SAHMRI Bioresources Facility (Adelaide, Australia) under specific pathogen-free conditions. Experiments were performed in accordance with the Australian Code for the Care and Use of Animals for Scientific Purposes. For tumour progression models, 8-week-old C57BL/KaLwRij mice were inoculated with 5TGM1 cells expressing both green fluorescent protein (GFP) and luciferase. For intravenous (i.v.) models,  $5 \times 10^5$  5TGM1 cells were injected in 100  $\mu$ L of PBS via the tail vein. For intratibial (i.t.) models,  $1 \times 10^5$  5TGM1 cells were injected in 10  $\mu$ L of PBS into the medullary cavity of the tibia as previously described.<sup>5,25</sup> Tumour progression was monitored and quantified by weekly bioluminescent imaging (BLI) using the Xenogen IVIS<sup>®</sup> Spectrum Imaging System as previously described.<sup>5</sup> For end-point quantification of paraprotein, serum was collected and subjected to serum protein electrophoresis (SPEP) using a Sebia Hydragel  $\beta$ 1/ $\beta$ 2 kit as per manufacturer's instructions (Sebia, USA). For homing models, induction of an acute inflammatory response was achieved via insertion of a 26-gauge needle into the medullary cavity of 6-week-old KaLwRij mice tibiae. After 24 h,  $5 \times 10^6$  5TGM1 cells in 100  $\mu$ L of PBS were injected intravenously via the tail vein. The presence of GFP<sup>+</sup> 5TGM1 cells after 24 h was determined using the LSRFortessa X-20 flow cytometer. Data were analysed using FlowJoTM v10.8 Software (BD Biosciences).

### BLI of MPO activity in vivo

Mice were intravenously injected with 200  $\mu$ L of luminol (30 mg/mL) at a dose of 300 mg/kg (Sigma Aldrich). After 15 min, bioluminescence was detected using the Xenogen IVIS<sup>®</sup> Spectrum Imaging System as previously described.<sup>26</sup>

### Targeted inhibition of MPO in vivo

4-ABAH (Sigma Aldrich) was administered twice daily (40 mg/kg; intraperitoneal [i.p.]), in 250  $\mu$ L 2% DMSO in PBS, initiated 24 h prior to tumour engraftment.

### Characterisation of BM CD11b<sup>+</sup> populations by flow cytometry

Total BM was collected from naive or 5TGM1 tumour-bearing KaLwRij mice at experimental end-points, and  $1 \times 10^6$  cells were stained with mouse monoclonal anti-CD11b APC-Cy7 (BD Biosciences), anti-Ly-6C BV421 and anti-Ly-6G PE-Cy7 antibodies (Biolegend) and subjected to

analysis by flow cytometry using the LSRFortessa X-20 flow cytometer (BD Biosciences).

### CD11b<sup>+</sup> myeloid cell isolation

CD11b<sup>+</sup> cells were isolated from total BM by magnetically activated cell sorting (MACS) using the mouse CD11b Cell Isolation Kit (Miltenyi Biotec), as per manufacturer's instructions.

### Cell culture

Unless otherwise stated, cell culture media and additives were sourced from Sigma Aldrich. Cell lines (5TGM1, OP9, RPMI8226 and MDA-MB-231-TXSA) were maintained as previously described.<sup>5,27</sup>

### In vitro CD11b<sup>+</sup> assay

5TGM1 conditioned media (CM) was generated by culturing 5TGM1 ( $5 \times 10^6$  cells/mL) in 10% fetal calf serum (FCS) (HyClone) Iscove's modified Dulbecco's medium (IMDM), supplemented with 50  $\mu$ M 2-mercaptoethanol (Sigma Aldrich). After 48 h, supernatant was collected and filtered (40  $\mu$ m). CM were then collected and mixed at a 50:50 ratio with 10% FCS IMDM supplemented with 2  $\mu$ M 2-mercaptoethanol. Enriched CD11b<sup>+</sup> myeloid cells were seeded ( $1 \times 10^6$  cells/well) in CM in a 12-well plate and cultured for 72 h.

### Conditioned media proliferation assay

Murine OP9 stromal cells were grown to 70% confluency in a T25-cell culture flask in 10% FCS Dulbecco's modified Eagle medium (DMEM). Cells were stimulated with native human MPO (hMPO) (Cell Sciences Inc.) at increasing concentrations (vehicle, 0.5, 1, 1.5 and 2  $\mu$ g/mL) in 2 mL of 1% FCS IMDM for 48 h. CM was then collected and  $1 \times 10^4$  5TGM1 cells were seeded into 96-well black/clear bottom plates (Corning Life Science) in 2% FCS IMDM with 50% OP9 CM or 2% FCS IMDM supplemented with recombinant interleukin 6 (IL6) 2 ng/mL (Sigma Aldrich) and cultured for 72 h. 5TGM1 proliferation was determined by BLI using the Xenogen IVIS<sup>®</sup> Spectrum Imaging System as previously described.<sup>28</sup>

### Quantitative reverse transcription polymerase chain reaction (RT-qPCR)

Total RNA was extracted using TRIzol (Invitrogen) as per manufacturer's instructions. cDNA was synthesised using Superscript IV (Invitrogen) as per manufacturer's

instructions. Quantification of gene expression was achieved using RT<sup>2</sup> SYBR<sup>®</sup> Green reagent (Qiagen), on a QuantStudio<sup>™</sup> 3 real-time PCR system (Applied Biosystems) as previously described.<sup>29</sup> Sequences for mouse primers are outlined in Table S1. Changes in gene expression were calculated relative to *Gapdh* using the  $\Delta\Delta C_t$  method ( $2^{-\Delta\Delta C_t}$ ).

### IFN- $\gamma$ enzyme-linked immunosorbent spot (ELISpot) assay

Spleens collected from naive 8-week-old KaLwRij mice were homogenised through a 70- $\mu$ m filter and subjected to hypotonic red blood cell (RBC) lysis. Splenocytes were treated with hMPO (2  $\mu$ g/mL) in 20% FCS IMDM for 20 min then cultured at  $2 \times 10^5$  cells/well in multiscreen-IP HTS plates (Millipore) coated with mouse monoclonal anti-IFN- $\gamma$  (Cat# R4-6A2, MabTech, Sweden) with  $1 \times 10^5$  5TGM1 cells for 36 h. Detection of IFN- $\gamma$  was achieved through the use of mouse monoclonal anti-IFN- $\gamma$  (Cat#AN-18, MabTech), streptavidin-alkaline phosphatase and SigmaFast<sup>™</sup> (Sigma Aldrich). Spot quantification was completed using an ELISpot reader (MabTech).

Expanded human V $\gamma$ 9V $\delta$ 2 T-cells were provided by Prof Andreas Evdokiou (Basil Hetzel Institute, The University of Adelaide).<sup>30</sup> T-cells were then treated for 2 h with hMPO in 10% heat-inactivated FCS DMEM prior to being cultured at  $1 \times 10^4$  cells/well in multiscreen-IP HTS plates coated with human monoclonal anti-IFN- $\gamma$  (Cat#1-D1K, MabTech) with either RPMI-8226 cells or MDA-MB-231-TXSA cells at  $1 \times 10^3$  cells/well for 16 h. Detection of IFN- $\gamma$  was achieved through the use of human monoclonal anti-IFN- $\gamma$  (Cat#7-B6-1, MabTech) and developed as outlined above.

### T-cell cytotoxicity

RBC depleted naïve KaLwRij splenocytes were enriched using a CD8a<sup>+</sup> T-cell isolation kit (Miltenyi Biotec), as per manufacturer's instructions. Murine T cells were then co-cultured with gamma-irradiated (30 Gy) 5TGM1 cells at 10:1 effector:target ratio in T-cell medium (10% FCS RPMI-1640 medium, 0.05 mM  $\beta$ -mercaptoethanol,  $1 \times$  non-essential amino acids and 2 ng/mL recombinant hIL-2 (R&D Systems), stimulated with or without hMPO (2  $\mu$ g/mL). After 72 h, T cells were harvested and seeded at  $3 \times 10^4$  cells/well with  $1 \times 10^4$  irradiated 5TGM1 cells in 1% FCS T-cell medium in a 96-well plate and cultured for 24 h. Cytotoxicity was determined using a lactate dehydrogenase (LDH) assay kit (Promega Corporation) as per manufacturer's instructions.

For human T-cell cytotoxicity assays, V $\gamma$ 9V $\delta$ 2 T cells were cultured with or without hMPO (2  $\mu$ g/mL) for 2 h in 10% heat-inactivated FCS DMEM. T-cells were then seeded at  $1 \times 10^5$ /well in a 96-well plate with  $1 \times 10^4$  RPMI-8226 cells and cultured for 4 h. RPMI-8226 LDH release was determined as outlined above.

## Statistical analysis

Experimental groups were compared using *t*-test, one-way or two-way analysis of variance (ANOVA) as appropriate. *p*-values of <0.05 were considered statistically significant. All statistical analyses were conducted using GraphPad Prism (version 9.0, GraphPad Software Inc.).

## RESULTS

### Myeloma tumour development is accompanied by an increase in myeloid cell-derived *Mpo* expression in vivo

Chronic inflammation can have detrimental effects within the BM microenvironment and contribute to the pathogenesis of haematological malignancies.<sup>31,32</sup> Therefore, we investigated whether CD11b<sup>+</sup> myeloid cell populations and *Mpo* expression and activity were associated with MM development in the 5TGM1-KaLwRij syngeneic mouse model. Consistent with previous studies,<sup>16,33</sup> flow cytometric analysis of BM revealed a significant increase in the CD11b<sup>+</sup> myeloid cell population in response to MM tumour development at Week 4 (Figure 1A). Notably, granulocytes (identified as CD11b<sup>+</sup>Ly6c<sup>int</sup>Ly6g<sup>+</sup>) were enriched within the myeloid cell population in tumour-bearing mice (Figure S1A,B). As CD11b<sup>+</sup>Ly6c<sup>int</sup>Ly6g<sup>+</sup> cells from tumour-bearing mice have previously been reported to express significantly higher *Mpo* expression compared with those from tumour-naïve mice,<sup>24</sup> we next compared the expression of *Mpo* in CD11b<sup>+</sup> cells isolated from BM of MM-bearing and naïve mice. BM-derived myeloid cell expression of *Mpo* was increased almost 12-fold at 2 weeks and fourfold at 4 weeks post-tumour cell inoculation (Figure 1B). In addition, CD11b<sup>+</sup> cells isolated from BM of naïve mice cultured ex vivo with 5TGM1 CM exhibited a significant increase in *Mpo* expression (Figure 1C), suggesting MM PC may directly influence myeloid cell expression of *Mpo*. Indeed, using luminol-BLI to detect *Mpo* activity in vivo,<sup>26</sup> we observed increased *Mpo* activity co-localised to sites of MM development (Figure 1D). Taken together, these findings indicate that MPO mRNA expression is highly upregulated within myeloid populations at early stages of MM tumour establishment, while an expansion of myeloid cells at late stage disease is accompanied by colocalisation of MPO activity.

### Localised inflammation and increased MPO activity create a pro-tumorigenic niche for MM PC establishment and proliferation

MM development has been reported to coincide with an inflammatory BM microenvironment.<sup>34,35</sup> As MPO is commonly activated in inflammatory responses, we postulated

that induction of inflammation, and recruitment of myeloid cells with increased MPO activity, may provide a supportive BM microenvironment to promote MM tumour development and growth.

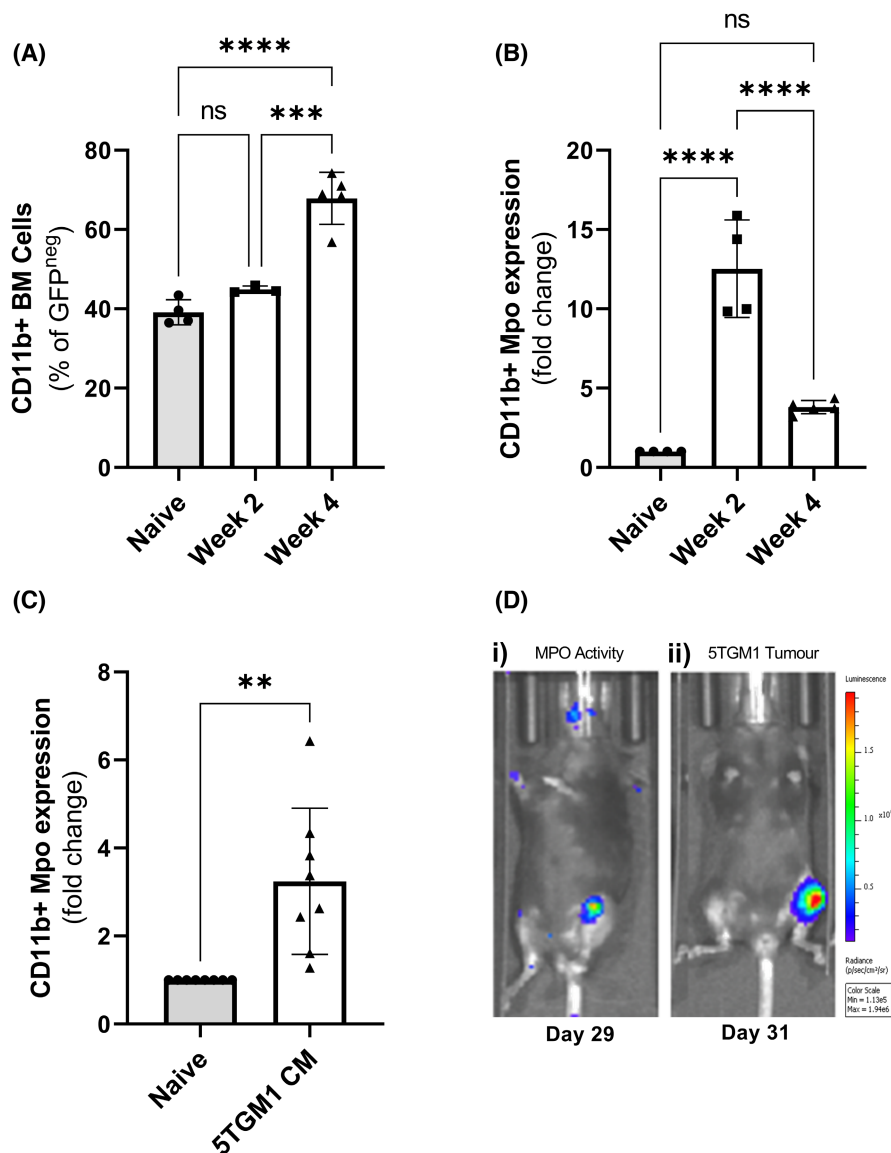
To investigate this, a localised inflammatory response was induced within the BM of KaLwRij mice by insertion of a 26G needle into the i.t. medullary cavity in the left tibia. After 24h, an increase in MPO activity was observed at the site of the sham i.t. injection (Figure 2A), accompanied by a significant increase in CD11b<sup>+</sup> myeloid cells within the BM, compared with the contralateral undamaged tibiae (Figure 2B). To determine if this inflammatory BM microenvironment creates a favourable niche for MM PC homing, an independent cohort of mice were injected intravenously with 5TGM1 cells 24h after the intratibial injury was performed. Flow cytometric analysis revealed a 1.7-fold increase in the number of GFP<sup>+</sup> 5TGM1 cells detected in the BM of the injected tibiae compared with contralateral controls (Figure 2C).

We have previously demonstrated that MPO can regulate stromal cell gene expression in the context of mammary carcinoma<sup>22</sup> and within the bone microenvironment.<sup>21</sup> Next, we investigated if MPO can stimulate the expression of combinatorial regulators of MDSC function<sup>36–38</sup> and MM development<sup>10,38–41</sup> in BM stromal cells in vitro. Real-time PCR showed that treatment with MPO increased OP9 mRNA expression of *Il6* (1.5-fold), *Vegfa* (1.6-fold) and *Ccl2* (1.6-fold) compared with the vehicle control (Figure 3A). Moreover, when stimulated with CM from MPO treated-OP9 stromal cells, 5TGM1 cells exhibited a modest but significant dose-dependent increase in proliferation with a maximal stimulation of approximately 13% after 72 h (Figure 3B). However, stimulating 5TGM1 cells with MPO had no direct effect on proliferation (Figure S2A). Furthermore, when cultured with recombinant IL-6 alone, 5TGM1 cells demonstrated a significant 27% increase in proliferation after 72 h (Figure 3B). Together, these data support a role for MPO in enhancing the paracrine effects of BM stromal cell-derived factors, such as IL6, on MM PC proliferation.

### MPO suppresses T-cell cytotoxicity in vitro

Given the early accumulation and immunosuppressive effects of MDSCs in MM disease,<sup>16</sup> together with our findings that *Mpo* expression is increased during the early stages of MM development, we next aimed to investigate if MPO exerts immunosuppressive activity. CD8<sup>+</sup> T-cells isolated from the spleens of naïve KaLwRij mice were pretreated with MPO and their cytotoxicity towards 5TGM1 cells was assessed in vitro. Indeed, MPO treatment of resulted in a significant 46% decrease in cytotoxicity (*p* = 0.0005) compared with untreated T cells (Figure 4A). Furthermore, following MPO pretreatment, we observed a 32% decrease in IFN- $\gamma$  positive splenocytes (*p* = 0.0085), as determined using an ELISpot assay (Figure 4B).





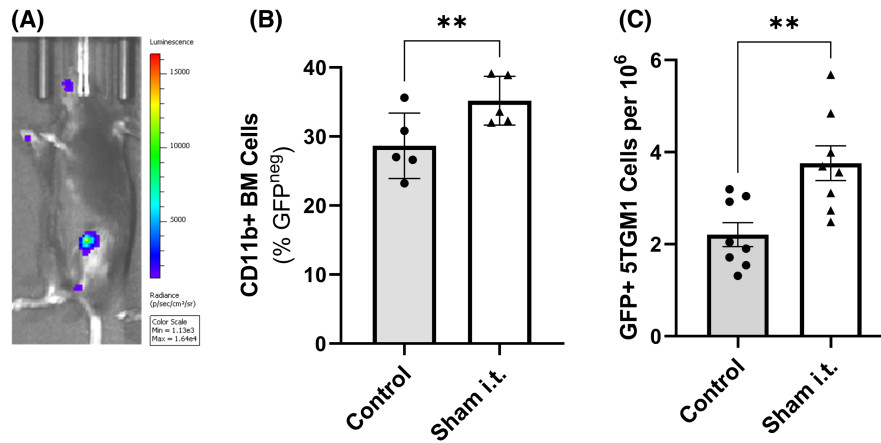
**FIGURE 1** CD11b<sup>+</sup> myeloid populations are expanded in the bone marrow (BM) of multiple myeloma (MM) tumour-bearing mice, with an increase in *Mpo* mRNA expression. (A) The proportion of CD11b<sup>+</sup> myeloid cells within the BM of naïve and i.v. 5TGM1 tumour-bearing KaLwRij mice, at early (Week 2) and late (Week 4) stage tumour development, were determined by flow cytometry, represented as a % of non-tumour (GFP<sup>neg</sup>) BM cells. (B) *Mpo* mRNA expression in magnetically activated cell sorting (MACS)-enriched CD11b<sup>+</sup> cells isolated from BM of naïve or tumour-bearing (weeks 2 and 4) mice, normalised to *Gapdh*. (C) *Mpo* mRNA expression in CD11b<sup>+</sup> cells isolated from tumour I mice cultured in the presence or absence of 50% 5TGM1 CM for 72 h. (D) Representative bioluminescent images ( $n = 3$ ) from an i.t. tumour model indicating (i) myeloperoxidase (MPO) activity (luminol) colocalised at (ii) sites of MM tumour development (D-luciferin). Results are shown as the mean  $\pm$  SEM,  $n = 3$ –8 mice/group. One-way analysis of variance (ANOVA) with Tukey's multiple comparisons test (A, B) or unpaired *t*-test (C) was used to calculate significance, \*\* $p < 0.01$ , \*\*\* $p < 0.001$ , \*\*\*\* $p < 0.0001$  and ns (non-significant;  $p > 0.05$ ). i.v., intravenous, i.t., intratibial.

Importantly, the ability of MPO to inhibit cytotoxic T-cell activity was confirmed using ex vivo expanded human V $\gamma$ 9V $\delta$ 2 T-cells given their potent cytotoxic capabilities. Pretreatment of V $\gamma$ 9V $\delta$ 2 T-cells with MPO resulted in a 22% reduction in cytotoxicity, compared with untreated controls, when cultured with the human MM cell line RPMI8226 ( $p = 0.048$ ). Additionally, while there was a consistent 10%–20% reduction in IFN- $\gamma$  positive cells in all three donors, this did not reach statistical significance ( $p = 0.124$ ; Figure 4C,D). Of note, MPO had no effect on the viability of T-cells (Figure S3). These findings suggest

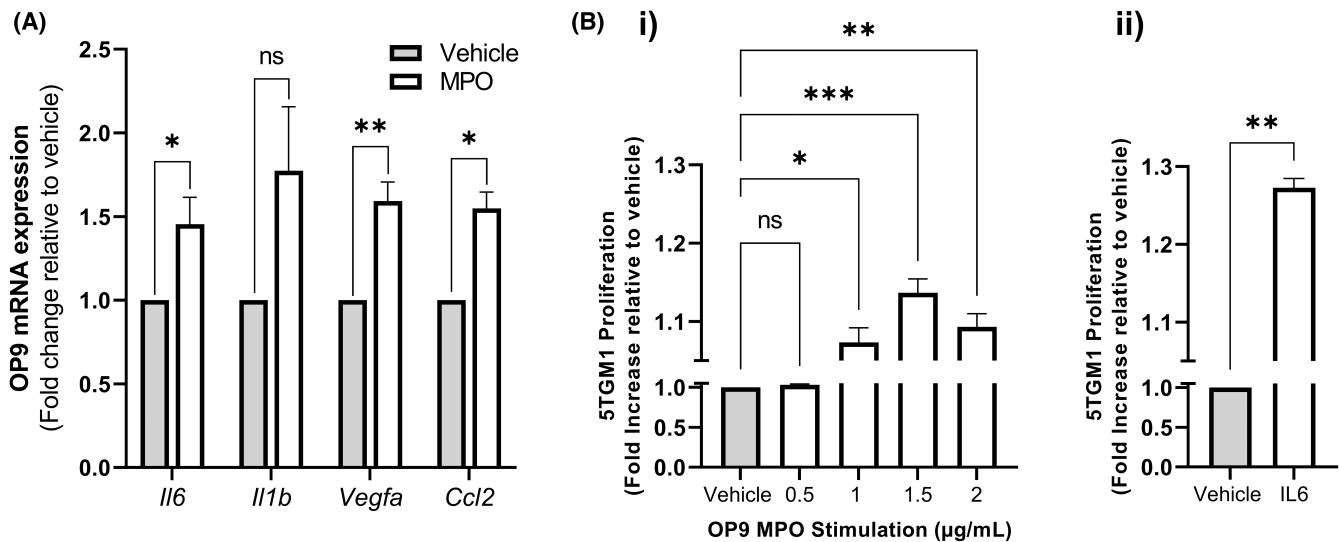
that MPO may play a direct role in immunosuppression by reducing the cytotoxic potential of T-cells.

### Targeted inhibition of MPO impedes MM tumour burden in mice

Given that MPO is increased in the MM BM microenvironment in vivo and promotes MM PC proliferation and inhibits T-cell function in vitro, the potential of specifically inhibiting MPO to limit MM



**FIGURE 2** Inflammation provides a pro-tumorigenic niche within the bone marrow (BM) and promotes multiple myeloma (MM) plasma cell (PC) homing. (A) Representative bioluminescence image indicating myeloperoxidase activity via luminol injection 24 h post-i.t.-induced inflammation. (B) The proportion of CD11b<sup>+</sup> myeloid cells within the BM 24 h following i.t. was determined by flow cytometry. Graph shows comparison of undamaged contralateral tibia to i.t. damaged tibia in the same mouse. (C) 24 h after sham i.t. injection, an independent cohort of mice were injected with 5TGM1 MM PCs i.v. and BM of the sham i.t. and contralateral tibiae were analysed after 24 h by flow cytometry to quantify the number of GFP<sup>+</sup> 5TGM1 MM PCs per 10<sup>6</sup> BM cells. Results are shown as the mean  $\pm$  SEM,  $n = 5-8$  mice/group. Paired  $t$ -test was used to calculate significance, \*\* $p < 0.01$ . i.v., intravenous, i.t., intratibial.



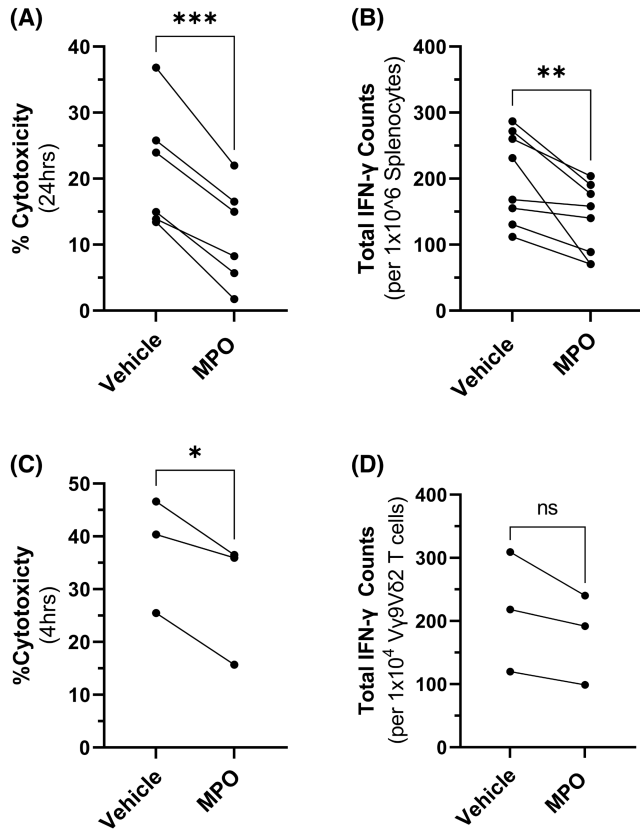
**FIGURE 3** Myeloperoxidase (MPO) enhances expression of pro-tumorigenic factors in bone marrow (BM) stromal cells (A) mRNA expression of *Il6*, *Il1b*, *Vegfa* and *Ccl2* in murine OP9 stromal cells following stimulation with 2  $\mu$ g/mL MPO in vitro. (B) Proliferation of 5TGM1 multiple myeloma plasma cell cultured for 72 h in conditioned media (CM) from MPO-stimulated OP9 stromal cells (i) or IL6 alone (ii), measured by bioluminescent imaging. Results are shown as the mean  $\pm$  SEM,  $n = 3$  independent experiments, performed in triplicate. Paired  $t$ -test (A, B ii) or one-way analysis of variance (ANOVA) with Tukey's multiple comparisons test (B i) was used as appropriate to calculate significance, \* $p < 0.05$ , \*\* $p < 0.01$ , \*\*\* $p < 0.001$  and ns (non-significant) ( $p > 0.05$ ).

tumour development in vivo was examined. KaLwRij mice were treated with the irreversible MPO inhibitor, 4-ABAH (40 mg/kg, twice daily, i.p.) or vehicle control, beginning 1 day prior to inoculation of 5TGM1 cells. Tumour burden was assessed by BLI weekly and SPEP at experimental end-point. Specific MPO inhibition with 4-ABAH significantly reduced tumour burden by 48% after 4 weeks compared to vehicle at tumour end-point ( $p = 0.041$ ; mean BLI; vehicle,  $3.55 \times 10^7 \pm 3 \times 10^6$  photons/s, compared with treatment with 4-ABAH,  $1.88 \times 10^7 \pm 4.48 \times 10^6$  photons/s; Figure 5A). These results were further supported by a significant 46%

reduction in serum paraprotein levels in 4-ABAH-treated mice compared with vehicle controls ( $p = 0.023$ ; Figure 5B).

## DISCUSSION

It is well established that extrinsic factors within the tumour microenvironment contribute to outgrowth and relapse of MM. The eradication of this currently incurable malignancy is dependent on understanding the complex interplay between cells of the BM microenvironment and malignant



**FIGURE 4** Myeloperoxidase (MPO) reduces tumour-specific T-cell activity. (A) CD8<sup>+</sup> T-cell cytotoxicity after 24h ( $n=6$  mice) of culture in the presence or absence of MPO (2  $\mu\text{g}/\text{mL}$ ), measured by lactate dehydrogenase (LDH) release. (B) Total interferon- $\gamma$  (IFN- $\gamma$ ) production by naive KaLwRij splenocytes cocultured with murine tumour cells in the presence or absence of MPO (2  $\mu\text{g}/\text{mL}$ ) in an ELISpot assay ( $n=8$  mice). (C) Human V $\gamma$ 9V $\delta$ 2 T-cell cytotoxicity of human tumour cells after 4h cultured in the presence or absence of MPO (2  $\mu\text{g}/\text{mL}$ ) measured by LDH release. (D) Total number of IFN- $\gamma$ -producing cells determined by ELISpot ( $n=3$  donors). Data points represent the mean value of each donor, performed in quadruplicate. Paired  $t$ -test was used to calculate significance, \* $p < 0.05$ , \*\* $p < 0.01$ , \*\*\* $p < 0.001$  and ns (non-significant) ( $p > 0.05$ ).

PCs, leading to their growth and survival. We have previously shown that increased MPO can produce favourable conditions for tumour progression, eliciting a pro-fibrogenic and pro-angiogenic tumour microenvironment in a mouse model of breast cancer.<sup>20,22</sup> Notably, a comprehensive meta-analysis of 16 858 cases of genetic MPO deficiency and 21 756 control subjects revealed that lower MPO expression is associated with an overall reduced cancer risk in both solid and haematological cancers.<sup>42</sup> The studies described herein identify a role for MPO in facilitating MM progression and suggest MPO as a viable therapeutic target to limit MM progression.

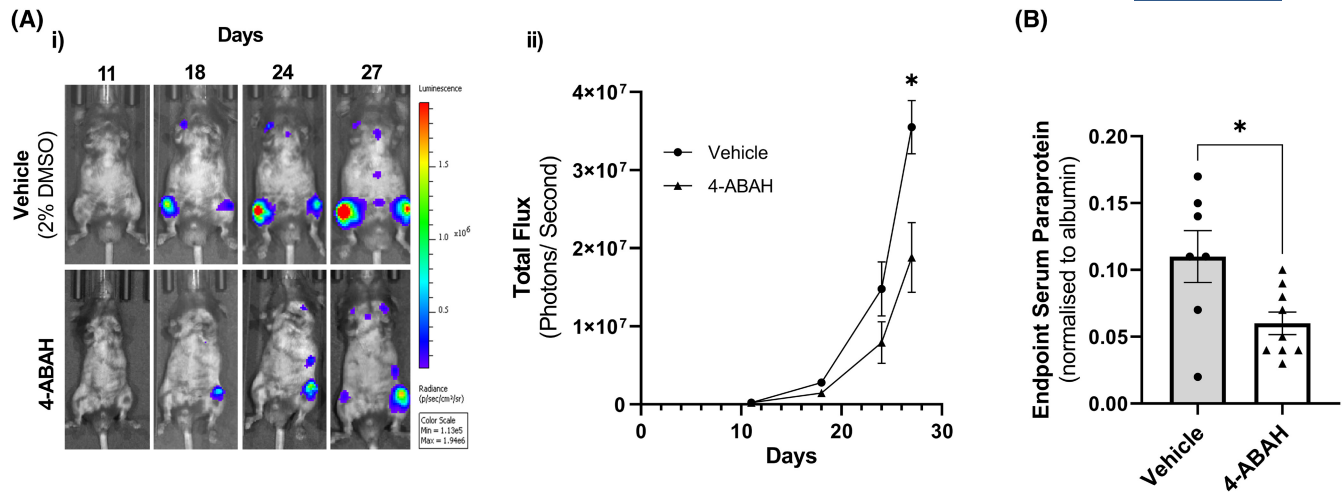
MDSCs accumulate within the BM of MM patients,<sup>33,34</sup> and *Mpo* has been established as the most highly upregulated gene within the granulocytic MDSC population in a mouse model of lymphoma.<sup>24</sup> In keeping with these previous studies, we demonstrate that myeloid cell populations are increased within the BM of the 5TGM1-KaLwRij model

of MM in response to tumour development. Furthermore, our data suggest that MM PC may directly influence *Mpo* gene expression in BM-derived myeloid cells. Specifically, we show that tumour-associated myeloid cells exhibit a 12-fold increase in *Mpo* expression during the early stages of tumour development, which then decreases to almost fivefold at endpoint, where we observed the highest number of MDSC accumulation. This suggests that MPO may play an important role in the early development of MM. Interestingly, a study by Van Valckenborgh et al. showed that the immunosuppressive capacity of MDSC is increased during early initiation of the myeloma tumour process.<sup>43</sup> Coupled with the observation that MPO activity is co-localised at sites of MM tumour development, these data suggest that MDSC may represent a major source of MPO in the context of MM.

The inflammatory BM microenvironment leads to myeloid skewing of haematopoietic stem cells in the context of chronic inflammation associated with ageing.<sup>32</sup> In addition, myeloid cells promote pro-inflammatory cytokine release, resulting in a vicious cycle of accumulated myeloid and myeloid-skewed cells in the BM.<sup>32,44</sup> In the present study, we show that the induction of a local acute inflammatory response within the BM of KaLwRij mice resulted in the accumulation of myeloid cells and an increase in localised MPO activity. IL6, VEGFA and CCL2 are known to play a crucial role in MM tumorigenesis, both through facilitating MM PC growth and modification of the BM microenvironment.<sup>10,38–41</sup> To this end, we observed a significant increase in mRNA expression of *Il6*, *Vegfa* and *Ccl2* in OP9 BM stromal cells when treated with MPO. Mechanistically, we have previously shown in stromal cells that MPO has the capacity to regulate proteins with the activation of several signalling pathways, including ERK1/2, p38 MAPK, JNK, Akt, FAK and HIF-2 $\alpha$ .<sup>20,45</sup> Furthermore, a study by Odobasic et al. showed that MPO-derived intermediates interact with the dendritic cell complement receptor, Mac-1 and inhibit dendritic cell activation.<sup>46</sup> These findings suggest that MPO has a diverse impact on several cellular components that may modulate pro-inflammatory/pro-tumourigenic factors within the BM and, as such, generate a tumour-supportive microenvironment.

Furthermore, we show an indirect effect on 5TGM1 MM PC proliferation when cultured with CM from MPO-treated OP9 cells, which may be attributable to the upregulation of IL6. Interestingly, several case studies have detailed plasmacytoma occurrence at sites of local trauma and inflammation in MGUS patients,<sup>47–49</sup> supporting the hypothesis that inflammation represents a key driving factor in the homing and/or outgrowth of malignant PCs. Collectively, these studies suggest that local trauma and the associated induction of pro-inflammatory pathways, which we postulate include increased MPO activity, aid in establishing a favourable niche for MM development.

It is widely documented that tumour cells produce immune-modulating factors that reprogram immature myeloid cells, namely MDSC, to acquire immunosuppressive capabilities.<sup>50</sup> Furthermore, tumour progression is



**FIGURE 5** Inhibition of myeloperoxidase activity reduces tumour burden in vivo. Eight-week-old C57BL/KaLwRij mice were treated with 4-ABA (40 mg/kg; i.p.) or 2% DMSO vehicle twice daily throughout the experiment, initiated 24 h prior to inoculation of  $5 \times 10^5$  5TGM1 MM PC (i.v.). (A) (i) Representative bioluminescent images; (ii) tumour burden was quantified as photons per second. (B) End-point tumour burden was measured by serum protein electrophoresis (Day 28) normalised to internal albumin control. Results are shown as the mean  $\pm$  SEM,  $n = 7-9$  mice/group. Two-way analysis of variance (ANOVA) with Šidák's multiple comparisons test (A) or unpaired *t*-test (B) was used to calculate significance, \* $p < 0.05$ . i.p., intraperitoneal, i.v., intravenous.

associated with abnormal myelopoiesis and the subsequent accumulation of MDSCs, which in turn results in the suppression of anti-tumour immune responses.<sup>51,52</sup> By utilising mouse splenocytes as a rich source of murine T-cells, in addition to ex vivo expanded human V $\gamma$ 9V $\delta$ 2 T-cells, we show that MPO pretreatment reduced both human and mouse MM PC-specific T-cell cytotoxicity, corresponding to a decrease in IFN- $\gamma$ -producing cells. Interestingly, it has been previously reported that T-cell activation and proliferation in Mpo<sup>-/-</sup> mice were significantly enhanced 6 days following immunisation. Moreover, in splenocytes stimulated with ovalbumin in vitro, Mpo<sup>-/-</sup> T-cells produce higher levels of IFN- $\gamma$  compared to WT controls.<sup>46</sup> Collectively, these data support a role for MPO in facilitating immune suppression by inhibiting anti-tumour T-cell responses.

Therapeutic targeting of MPO has recently gained considerable attention in a number of disease states, including cancer.<sup>53-55</sup> Indeed, MPO inhibition resulted in a 50% reduction in tumour burden in a mouse model of lung carcinoma.<sup>55</sup> While clinical manifestation of MPO deficiency has been reported to be present in approximately 1 in 4000 individuals, the majority remain asymptomatic.<sup>56</sup> Therefore, although MPO is involved in normal innate immunity,<sup>57,58</sup> inhibiting MPO activity is unlikely to be accompanied by increased risk of infection. The potent irreversible MPO inhibitor 4-ABA, which functions by inhibiting the enzymatic activity of MPO, is the most extensively used MPO inhibitor in vitro, and has been used in various models of disease in vivo.<sup>20,21,46</sup> Importantly, our study is the first to demonstrate that targeted MPO inhibition, using 4-ABA as a single agent, significantly reduced MM tumour burden in the 5TGM1-KaLwRij mouse model. While encouraging, complete eradication of

MM tumour was not achieved, prompting future studies utilising current anti-myeloma therapies in combination with MPO inhibitors. Immunomodulatory drugs (IMiDs) have been well described in targeting MM tumour outgrowth through both direct cytotoxic mechanisms as well as indirectly through the modulation of tumour immunity.<sup>59</sup> Notably, the immunomodulatory drug lenalidomide, commonly used in the treatment of MM, has been reported to reduce MPO levels in mouse models of colitis, and potentially reduce MDSC induction in the context of MM.<sup>60,61</sup> Taken in conjunction with the findings presented here, this suggests a need for future studies to determine whether a combination therapy approach represents a potential means for a more pronounced reduction of MDSC-derived MPO within the MM tumour microenvironment accompanied by a direct effect on MM PC survival, and thus a more complete response to treatment.

## CONCLUSIONS

In summary, our study has described, for the first time, that myeloid-derived MPO contributes to MM disease progression and identifies MPO as a viable therapeutic target to reduce tumour progression in vivo. With limited therapies used in the clinic that target the stromal microenvironment, the findings presented here represent a novel treatment strategy that may be incorporated into current treatment regimens to improve the quality of life of MM patients.

## AUTHOR CONTRIBUTIONS

Vasilios Panagopoulos and Andrew C. W. Zannettino were involved in conceptualisation. Connor M. D. Williams, Jacqueline E. Noll, Makutiro G. Masavuli, Branka



Grubor-Bauk, Duncan R. Hewett and Krzysztof M. Mrozik were involved in methodology. Connor M. D. Williams, Jacqueline E. Noll, Alanah L. Bradey, Vicki J. Wilczek, Jvaughn Duggan, Makutiro G. Masavuli, Romana A. Panagopoulos and Krzysztof M. Mrozik were involved in investigation. Connor M. D. Williams and Jacqueline E. Noll were involved in writing—original draft preparation. Vasilios Panagopoulos, Andrew C. W. Zannettino, Kate Vandyke, Duncan R. Hewett and Alanah L. Bradey were involved in writing—review and editing. Vasilios Panagopoulos, Kate Vandyke, Andrew C. W. Zannettino and Jacqueline E. Noll were involved in supervision. All authors have read and agreed to the published version of the manuscript.

### ACKNOWLEDGMENTS

Open access publishing facilitated by The University of Adelaide, as part of the Wiley - The University of Adelaide agreement via the Council of Australian University Librarians.

### FUNDING INFORMATION

This project was supported by grant 2021451 and awarded through the 2022 Priority-driven Collaborative Cancer Research Scheme and co-funded by Cancer Australia, Can Too Foundation and Leukaemia Foundation. J.E.N. was supported by a Veronika Sacco Clinical Cancer Research Fellowship. V.P. was supported by a National Health and Medical Research Council Early Career Fellowship. K.V. and K.M.M. were supported by Early Career Cancer Research Fellowships from Cancer Council SA's Beat Cancer Project on behalf of its donors and the State Government of South Australia through the Department of Health and Wellbeing. M.G.M. was supported by The Hospital Research Foundation Group Early-Career Fellowship. B.G. was supported by The Hospital Research Foundation Group Mid-Career Fellowship.

### CONFLICT OF INTEREST STATEMENT

Authors declare no conflicts of interest.

### ETHICS STATEMENT


The use of animals was approved by the South Australian Health and Medical Research Institute (SAHMRI) Animal Ethics Committee (SAM-20-022). Mice were bred and housed within the SAHMRI Bioresources Facility (Adelaide, Australia) under specific pathogen-free conditions. Experiments were performed in accordance with the Australian Code for the Care and Use of Animals for Scientific Purposes.

### ORCID

Andrew C. W. Zannettino  <https://orcid.org/0000-0002-6646-6167>

[org/0000-0002-6646-6167](https://orcid.org/0000-0002-6646-6167)

Kate Vandyke  <https://orcid.org/0000-0002-1033-849X>

Vasilios Panagopoulos  <https://orcid.org/0000-0002-6879-1262>

[org/0000-0002-6879-1262](https://orcid.org/0000-0002-6879-1262)

### REFERENCES

1. Kumar SK, Dimopoulos MA, Kastritis E, Terpos E, Nahi H, Goldschmidt H, et al. Natural history of relapsed myeloma, refractory to immunomodulatory drugs and proteasome inhibitors: a multicenter IMWG study. *Leukemia*. 2017;31(11):2443–8.
2. Dhodapkar MV. MGUS to myeloma: a mysterious gammopathy of underexplored significance. *Blood*. 2016;128(23):2599–606.
3. Noll JE, Williams SA, Tong CM, Wang H, Quach JM, Purton LE, et al. Myeloma plasma cells alter the bone marrow microenvironment by stimulating the proliferation of mesenchymal stromal cells. *Haematologica*. 2014;99(1):163–71.
4. Noll JE, Williams SA, Purton LE, Zannettino AC. Tug of war in the haematopoietic stem cell niche: do myeloma plasma cells compete for the HSC niche? *Blood Cancer J*. 2012;2:e91.
5. Clark KC, Hewett DR, Panagopoulos V, Plakhova N, Opperman KS, Bradey AL, et al. Targeted disruption of bone marrow stromal cell-derived Gremlin1 limits multiple myeloma disease progression in vivo. *Cancers (Basel)*. 2020;12(8):2149.
6. Moser-Katz T, Joseph NS, Dhodapkar MV, Lee KP, Boise LH. Game of bones: how myeloma manipulates its microenvironment. *Front Oncol*. 2020;10:625199.
7. Nefedova Y, Cheng P, Alsina M, Dalton WS, Gabrilovich DI. Involvement of Notch-1 signaling in bone marrow stroma-mediated de novo drug resistance of myeloma and other malignant lymphoid cell lines. *Blood*. 2004;103(9):3503–10.
8. Zdzisinska B, Walter-Croneck A, Kandefer-Szerszen M. Matrix metalloproteinases-1 and -2, and tissue inhibitor of metalloproteinase-2 production is abnormal in bone marrow stromal cells of multiple myeloma patients. *Leuk Res*. 2008;32(11):1763–9.
9. Garcia-Gomez A, Sanchez-Guijo F, Del Canizo MC, San Miguel JF, Garayoa M. Multiple myeloma mesenchymal stromal cells: contribution to myeloma bone disease and therapeutics. *World J Stem Cells*. 2014;6(3):322–43.
10. Harmer D, Falank C, Reagan MR. Interleukin-6 interweaves the bone marrow microenvironment, bone loss, and multiple myeloma. *Front Endocrinol (Lausanne)*. 2018;9:788.
11. Zhao H, Wu L, Yan G, Chen Y, Zhou M, Wu Y, et al. Inflammation and tumor progression: signaling pathways and targeted intervention. *Signal Transduct Target Ther*. 2021;6(1):263.
12. Malek E, de Lima M, Letterio JJ, Kim BG, Finke JH, Driscoll JJ, et al. Myeloid-derived suppressor cells: the green light for myeloma immune escape. *Blood Rev*. 2016;30(5):341–8.
13. Romano A, Conticello C, Cavalli M, Vetro C, La Fauci A, Parrinello NL, et al. Immunological dysregulation in multiple myeloma microenvironment. *Biomed Res Int*. 2014;2014:198539.
14. Gorgun GT, Whitehill G, Anderson JL, Hideshima T, Maguire C, Laubach J, et al. Tumor-promoting immune-suppressive myeloid-derived suppressor cells in the multiple myeloma microenvironment in humans. *Blood*. 2013;121(15):2975–87.
15. Favalaro J, Liyadipitiya T, Brown R, Yang S, Suen H, Woodland N, et al. Myeloid derived suppressor cells are numerically, functionally and phenotypically different in patients with multiple myeloma. *Leuk Lymphoma*. 2014;55(12):2893–900.
16. Ramachandran IR, Martner A, Pisklakova A, Condamine T, Chase T, Vogl T, et al. Myeloid-derived suppressor cells regulate growth of multiple myeloma by inhibiting T cells in bone marrow. *J Immunol*. 2013;190(7):3815–23.
17. Wang Z, Zhang L, Wang H, Xiong S, Li Y, Tao Q, et al. Tumor-induced CD14+HLA-DR (–/low) myeloid-derived suppressor cells correlate with tumor progression and outcome of therapy in multiple myeloma patients. *Cancer Immunol Immunother*. 2015;64(3):389–99.
18. Kusmartsev S, Nefedova Y, Yoder D, Gabrilovich DI. Antigen-specific inhibition of CD8+ T cell response by immature myeloid cells in cancer is mediated by reactive oxygen species. *J Immunol*. 2004;172(2):989–99.
19. Mundy-Bosse BL, Lesinski GB, Jaime-Ramirez AC, Benninger K, Khan M, Kuppusamy P, et al. Myeloid-derived suppressor cell

- inhibition of the IFN response in tumor-bearing mice. *Cancer Res.* 2011;71(15):5101–10.
20. Panagopoulos V, Zinonos I, Leach DA, Hay SJ, Liapis V, Zysk A, et al. Uncovering a new role for peroxidase enzymes as drivers of angiogenesis. *Int J Biochem Cell Biol.* 2015;68:128–38.
  21. DeNichilo MO, Panagopoulos V, Rayner TE, Borowicz RA, Greenwood JE, Evdokiou A. Peroxidase enzymes regulate collagen extracellular matrix biosynthesis. *Am J Pathol.* 2015;185(5):1372–84.
  22. Panagopoulos V, Leach DA, Zinonos I, Ponomarev V, Licari G, Liapis V, et al. Inflammatory peroxidases promote breast cancer progression in mice via regulation of the tumour microenvironment. *Int J Oncol.* 2017;50(4):1191–200.
  23. Oberley MJ, Li S, Orgel E, Phei Wee C, Hagiya A, O'Gorman MRG. Clinical significance of isolated myeloperoxidase expression in pediatric B-lymphoblastic leukemia. *Am J Clin Pathol.* 2017;147(4):374–81.
  24. Youn JI, Collazo M, Shalova IN, Biswas SK, Gabrilovich DI. Characterization of the nature of granulocytic myeloid-derived suppressor cells in tumor-bearing mice. *J Leukoc Biol.* 2012;91(1):167–81.
  25. Cheong CM, Mrozik KM, Hewett DR, Bell E, Panagopoulos V, Noll JE, et al. Twist-1 is upregulated by NSD2 and contributes to tumour dissemination and an epithelial-mesenchymal transition-like gene expression signature in t(4;14)-positive multiple myeloma. *Cancer Lett.* 2020;475:99–108.
  26. Gross S, Gammon ST, Moss BL, Rauch D, Harding J, Heinecke JW, et al. Bioluminescence imaging of myeloperoxidase activity in vivo. *Nat Med.* 2009;15(4):455–61.
  27. Liapis V, Zinonos I, Labrinidis A, Hay S, Ponomarev V, Panagopoulos V, et al. Anticancer efficacy of the hypoxia-activated prodrug evofosfamide (TH-302) in osteolytic breast cancer murine models. *Cancer Med.* 2016;5(3):534–45.
  28. Mrozik KM, Cheong CM, Hewett D, Chow AW, Blaschuk OW, Zannettino AC, et al. Therapeutic targeting of N-cadherin is an effective treatment for multiple myeloma. *Br J Haematol.* 2015;171(3):387–99.
  29. Bradey AL, Fitter S, Duggan J, Wilczek V, Williams CMD, Cheney EA, et al. Calorie restriction has no effect on bone marrow tumour burden in a Vκ\*MYC transplant model of multiple myeloma. *Sci Rep.* 2022;12(1):13128.
  30. Zysk A, DeNichilo MO, Panagopoulos V, Zinonos I, Liapis V, Hay S, et al. Adoptive transfer of ex vivo expanded Vγ9Vδ2 T cells in combination with zoledronic acid inhibits cancer growth and limits osteolysis in a murine model of osteolytic breast cancer. *Cancer Lett.* 2017;386:141–50.
  31. Khan AA, Alsahli MA, Rahmani AH. Myeloperoxidase as an active disease biomarker: recent biochemical and pathological perspectives. *Med Sci (Basel).* 2018;6(2):33.
  32. Leimkuhler NB, Schneider RK. Inflammatory bone marrow microenvironment. *Hematology Am Soc Hematol Educ Program.* 2019;2019(1):294–302.
  33. De Veirman K, Menu E, Maes K, De Beule N, De Smedt E, Maes A, et al. Myeloid-derived suppressor cells induce multiple myeloma cell survival by activating the AMPK pathway. *Cancer Lett.* 2019;442:233–41.
  34. de Jong MME, Keller Mayer Z, Papazian N, Tahri S, Hofste Op Bruinink D, Hoogenboezem R, et al. The multiple myeloma microenvironment is defined by an inflammatory stromal cell landscape. *Nat Immunol.* 2021;22(6):769–80.
  35. Musolino C, Allegra A, Innao V, Allegra AG, Pioggia G, Gangemi S. Inflammatory and anti-inflammatory equilibrium, proliferative and antiproliferative balance: the role of cytokines in multiple myeloma. *Mediators Inflamm.* 2017;2017:1852517.
  36. Lechner MG, Liebertz DJ, Epstein AL. Characterization of cytokine-induced myeloid-derived suppressor cells from normal human peripheral blood mononuclear cells. *J Immunol.* 2010;185(4):2273–84.
  37. Jiang M, Chen J, Zhang W, Zhang R, Ye Y, Liu P, et al. Interleukin-6 trans-signaling pathway promotes immunosuppressive myeloid-derived suppressor cells via suppression of suppressor of cytokine signaling 3 in breast cancer. *Front Immunol.* 2017;8:1840.
  38. Umansky V, Blattner C, Gebhardt C, Utikal J. The role of myeloid-derived suppressor cells (MDSC) in cancer progression. *Vaccines (Basel).* 2016;4(4):36.
  39. Mulcrone PL, Edwards SKE, Petrusca DN, Haneline LS, Delgado-Calle J, Roodman GD. Osteocyte Vegf-a contributes to myeloma-associated angiogenesis and is regulated by Fgf23. *Sci Rep.* 2020;10(1):17319.
  40. Li Y, Zheng Y, Li T, Wang Q, Qian J, Lu Y, et al. Chemokines CCL2, 3, 14 stimulate macrophage bone marrow homing, proliferation, and polarization in multiple myeloma. *Oncotarget.* 2015;6(27):24218–29.
  41. Botta C, Gulla A, Correale P, Tagliaferri P, Tassone P. Myeloid-derived suppressor cells in multiple myeloma: pre-clinical research and translational opportunities. *Front Oncol.* 2014;4:348.
  42. Yang WJ, Wang MY, Pan FZ, Shi C, Cen H. Association between MPO-463G > a polymorphism and cancer risk: evidence from 60 case-control studies. *World J Surg Oncol.* 2017;15(1):144.
  43. Van Valckenborgh E, Schoupe E, Movahedi K, De Bruyne E, Menu E, De Baetselier P, et al. Multiple myeloma induces the immunosuppressive capacity of distinct myeloid-derived suppressor cell subpopulations in the bone marrow. *Leukemia.* 2012;26(11):2424–8.
  44. Biasco L, Pellin D, Scala S, Dionisio F, Basso-Ricci L, Leonardelli L, et al. In vivo tracking of human hematopoiesis reveals patterns of clonal dynamics during early and steady-state reconstitution phases. *Cell Stem Cell.* 2016;19(1):107–19.
  45. Panagopoulos V, Liapis V, Zinonos I, Hay S, Leach DA, Ingman W, et al. Peroxidase enzymes inhibit osteoclast differentiation and bone resorption. *Mol Cell Endocrinol.* 2017;440:8–15.
  46. Odobasic D, Kitching AR, Yang Y, O'Sullivan KM, Muljadi RC, Edgerton KL, et al. Neutrophil myeloperoxidase regulates T-cell-driven tissue inflammation in mice by inhibiting dendritic cell function. *Blood.* 2013;121(20):4195–204.
  47. Pereira MA, Baudrier T, Costa A, Magalhaes J, Azevedo F. Cutaneous metastatic plasmacytomas with tropism for a previously injured limb. *Dermatol Online J.* 2008;14(9):16.
  48. Li A, Chen A, Gallagher M, Kaczmarek P, Tinwell B, Sneddon J, et al. Primary cutaneous plasmacytoma occurring after pacemaker implantation and recurring in scar tissue. *Dermatol Online J.* 2013;19(2):3.
  49. Knoell KA. Rapidly enlarging mass on the leg develops after local trauma. Trauma-induced secondary cutaneous plasmacytoma (TISP). *Arch Dermatol.* 2010;146(11):1301–6.
  50. Nakamura K, Smyth MJ. Myeloid immunosuppression and immune checkpoints in the tumor microenvironment. *Cell Mol Immunol.* 2020;17(1):1–12.
  51. Gabrilovich DI, Ostrand-Rosenberg S, Bronte V. Coordinated regulation of myeloid cells by tumours. *Nat Rev Immunol.* 2012;12(4):253–68.
  52. Sawanobori Y, Ueha S, Kurachi M, Shimaoka T, Talmadge JE, Abe J, et al. Chemokine-mediated rapid turnover of myeloid-derived suppressor cells in tumor-bearing mice. *Blood.* 2008;111(12):5457–66.
  53. Liu C, Desikan R, Ying Z, Gushchina L, Kampfrath T, Deiluiis J, et al. Effects of a novel pharmacologic inhibitor of myeloperoxidase in a mouse atherosclerosis model. *PLoS ONE.* 2012;7(12):e50767.
  54. Churg A, Marshall CV, Sin DD, Bolton S, Zhou S, Thain K, et al. Late intervention with a myeloperoxidase inhibitor stops progression of experimental chronic obstructive pulmonary disease. *Am J Respir Crit Care Med.* 2012;185(1):34–43.
  55. Rymaszewski AL, Tate E, Yimbesalu JP, Gelman AE, Jarzembowski JA, Zhang H, et al. The role of neutrophil myeloperoxidase in models of lung tumor development. *Cancers (Basel).* 2014;6(2):1111–27.
  56. Kutter D, Devaquet P, Vanderstocken G, Paulus JM, Marchal V, Gothot A. Consequences of total and subtotal myeloperoxidase deficiency: risk or benefit? *Acta Haematol.* 2000;104(1):10–5.

57. Aratani Y. Myeloperoxidase: its role for host defense, inflammation, and neutrophil function. *Arch Biochem Biophys*. 2018;640:47–52.
58. Siraki AG. The many roles of myeloperoxidase: from inflammation and immunity to biomarkers, drug metabolism and drug discovery. *Redox Biol*. 2021;46:102109.
59. Kotla V, Goel S, Nischal S, Heuck C, Vivek K, Das B, et al. Mechanism of action of lenalidomide in hematological malignancies. *J Hematol Oncol*. 2009;2:36.
60. Gemechu Y, Millrine D, Hashimoto S, Prakash J, Sanchenkova K, Metwally H, et al. Humanized cereblon mice revealed two distinct therapeutic pathways of immunomodulatory drugs. *Proc Natl Acad Sci USA*. 2018;115(46):11802–7.
61. Kuwahara-Ota S, Shimura Y, Steinebach C, Isa R, Yamaguchi J, Nishiyama D, et al. Lenalidomide and pomalidomide potentially interfere with induction of myeloid-derived suppressor cells in multiple myeloma. *Br J Haematol*. 2020;191(5):784–95.

## SUPPORTING INFORMATION

Additional supporting information can be found online in the Supporting Information section at the end of this article.

**How to cite this article:** Williams CMD, Noll JE, Bradey AL, Duggan J, Wilczek VJ, Masavuli MG, et al. Myeloperoxidase creates a permissive microenvironmental niche for the progression of multiple myeloma. *Br J Haematol*. 2023;203(4):614–624. <https://doi.org/10.1111/bjh.19102>