

Ancient DNA Provides New Insights into the Evolutionary History of New Zealand's Extinct Giant Eagle

Michael Bunce^{1,2*}, Marta Szulkin¹, Heather R. L. Lerner³, Ian Barnes⁴, Beth Shapiro¹, Alan Cooper¹, Richard N. Holdaway⁵

1 Henry Wellcome Ancient Biomolecules Centre, Department of Zoology, University of Oxford, United Kingdom, **2** Department of Anthropology, McMaster University, Ontario, Canada, **3** Department of Ecology and Evolutionary Biology, University of Michigan, Ann Arbor, Michigan, United States of America, **4** Department of Biology, University College London, United Kingdom, **5** Palaeoecology Research, Christchurch, New Zealand

Prior to human settlement 700 years ago New Zealand had no terrestrial mammals—apart from three species of bats—instead, approximately 250 avian species dominated the ecosystem. At the top of the food chain was the extinct Haast's eagle, *Harpagornis moorei*. *H. moorei* (10–15 kg; 2–3 m wingspan) was 30%–40% heavier than the largest extant eagle (the harpy eagle, *Harpia harpyja*), and hunted moa up to 15 times its weight. In a dramatic example of morphological plasticity and rapid size increase, we show that the *H. moorei* was very closely related to one of the world's smallest extant eagles, which is one-tenth its mass. This spectacular evolutionary change illustrates the potential speed of size alteration within lineages of vertebrates, especially in island ecosystems.

Citation: Bunce M, Szulkin M, Lerner HRL, Barnes I, Shapiro B, et al. (2005) Ancient DNA provides new insights into the evolutionary history of New Zealand's extinct giant eagle. PLoS Biol 3(1): e9.

Introduction

Since the discovery of the first fossil in 1872 the sheer size of *Harpagornis moorei* (Figure 1A) has fuelled speculation about its evolutionary history, ecology, and extinction, which like many other New Zealand bird species, is linked ultimately to human arrival in the 13th century. Even though morphology indicates that *H. moorei* was approaching the upper limit of body mass for powered flight [1], it was still an efficient predator. Consistent with other members of the family Accipitridae, it killed by piercing and crushing its prey with its large talons (Figure 1B). Rock art, Maori oral history, and bone artefacts prove early Polynesians co-existed with the eagle; however, there is no evidence that humans were targets for this aerial predator. An exploratory skeletal analysis, using representative genera within the Accipitridae (but lacking Australasian representatives of the genera *Hieraaetus*), placed *H. moorei* as a sister species to *Aquila audax*, the Australian wedge-tailed eagle (circa 4.5 kg; 2 m wingspan) [2]. However, shifts in body size are common in island ecosystems [3] and may distort skeletal characters used in phylogenetic reconstructions.

Results/Discussion

To further investigate the evolutionary history of this raptor we performed an ancient DNA study on the fossil remains of two extinct *H. moorei* specimens together with 16 extant eagles (Table S1). Short, overlapping segments of the mitochondrial cytochrome *b* (cyt *b*) and ND2 genes were PCR-amplified, sequenced and analysed with data available on GenBank to build a maximum-likelihood tree (Figures 1C and S1). Appropriate ancient DNA controls were undertaken [4], including multiple, overlapping amplifications and independent replication (see Materials and Methods). Surprisingly, the

resulting phylogeny firmly placed the *H. moorei* in a “clade” with a group of small eagles of the genus *Hieraaetus*, *H. morphnoides*, the little eagle, and *H. pennatus*, the booted eagle (both circa 1kg; 1.2m wingspan), and not with *A. audax*. Moreover, the genetic distance separating *H. moorei* and the most recent common ancestor of the related *Hieraaetus* eagles is relatively small (1.25%). The lack of fossil calibration points for accipitrids precludes direct estimates of divergence times; however, when a molecular rate of 0.7%–1.7% per million years, as previously estimated for avian cyt *b* [5], is applied to the tree, a divergence estimate of approximately 0.7–1.8 million years ago is obtained. Although such indirect molecular dating estimates are error-prone, we believe that this range is the best available approximation of the “true” date when the lineages diverged (early to mid Pleistocene); however, additional molecular data and control region sequences may further clarify the topology and timing of the splits. The arrival of *H. moorei* into New Zealand's South Island appears to have been a recent event, probably involving a small bird-eating Asian/Australian *Hieraaetus* eagle that thereafter increased rapidly in size.

An analysis of mean body mass using independent contrasts clearly demonstrated that the size of *H. moorei* is an anomaly in the context of the eagle phylogeny shown in Figure 1C (see Materials and Methods). Factors that may have

Received April 9, 2004; Accepted November 1, 2004; Published January 4, 2005
DOI: 10.1371/journal.pbio.0030009

Copyright: © 2005 Bunce et al. This is an open-access article distributed under the terms of the Creative Commons Attribution License, which permits unrestricted use, distribution, and reproduction in any medium, provided the original work is properly cited.

Abbreviations: cyt *b*, cytochrome *b*

Academic Editor: David Penny, Massey University, New Zealand

*To whom correspondence should be addressed. E-mail: buncem@mcmaster.ca

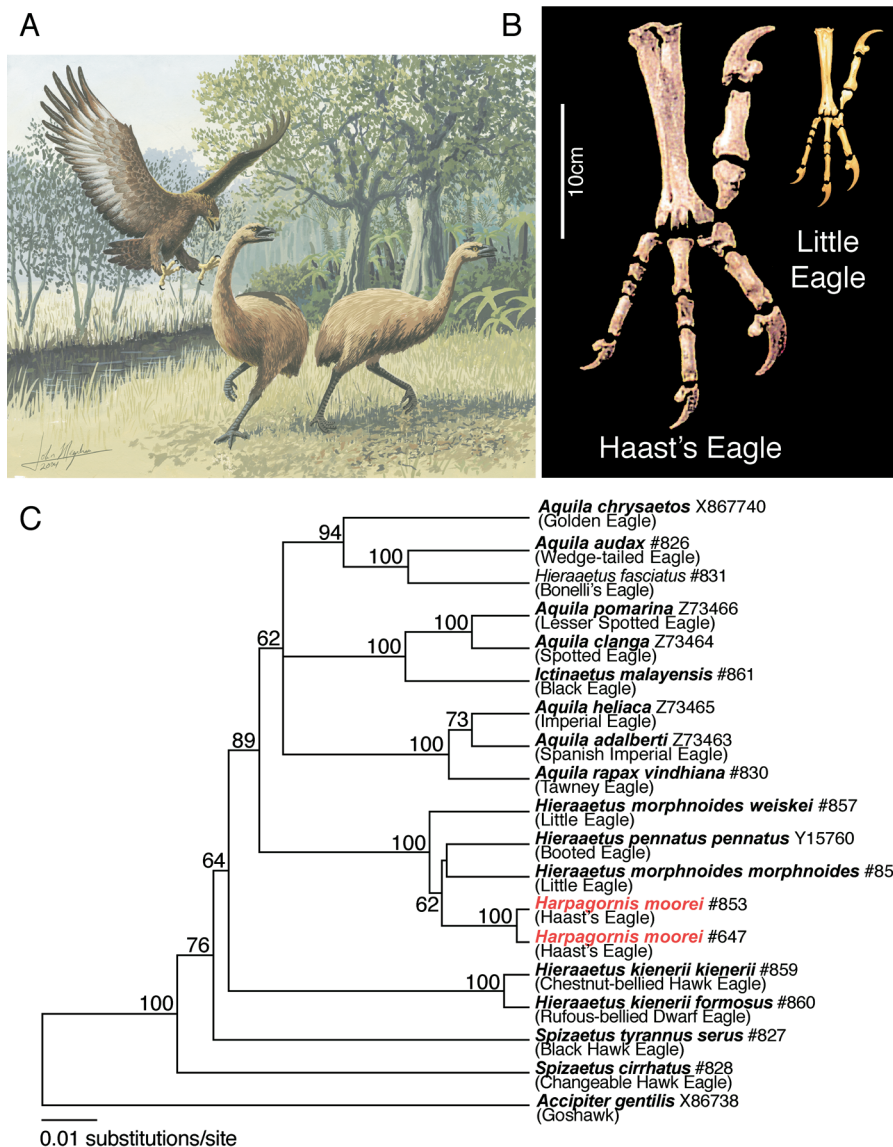


Figure 1. Images and Phylogenetic Analysis of New Zealand's Extinct Giant Eagle, *H. moorei*

(A) An artist's impression of *H. moorei* attacking the extinct New Zealand moa. Evidence of eagle strikes are preserved on skeletons of moa weighing up to 200 kg. These skeletons show the eagle struck and gripped the moa's pelvic area, and then killed with a single strike by the other foot to the head or neck. (Artwork: John Megahan.)

(B) Comparison of the huge claws of *H. moorei* with those of its close relative the *Hieraetus morphnoides*, the "little" eagle. The massive claws of *H. moorei* could pierce and crush bone up to 6 mm thick under 50 mm of skin and flesh.

(C) Maximum-likelihood tree based on *cyt b* data (circa 1 kb), depicting phylogenetic relationships within the "booted eagle" group. Extraction numbers or GenBank accession numbers are shown along with taxa name. *Harpagornis moorei* (red) groups exclusively with the small *Hieraetus* eagles, and genetic distances suggest a recent common ancestor about 0.7–1.8 million years ago (early to mid Pleistocene). The tree uses an HKY + Γ_4 + I likelihood model enforcing a molecular clock; maximum-likelihood bootstrap consensus values greater than 60% are shown. DOI: 10.1371/journal.pbio.0030009.g001

influenced such rapid morphological evolution include the size of potential prey, competition with smaller harriers (*Circus* spp.), and a complete lack of terrestrial predatory mammals in New Zealand. The speed and magnitude of the increase in body mass seems unique within vertebrate lineages, and is more significant because it occurred in a species still capable of flight. The avian faunas of Islands such as Hawaii (Hawaiian goose), the Galápagos (Galápagos finches), Mauritius (dodo), and New Zealand (moa) are often cited as examples of rapid evolution of flightlessness, shifts in body size, and other specialisations in birds [1,6,7]. Isolated island faunas derived from vagile colonists often have vacant niches for large herbivores and predators. In New Zealand the large herbivore niches were occupied for millions of years by the moa. Clearly, in the absence of mammalian predators, selection for large body size in an avian predator with a relatively generalised body form was not limited by competition. Other large predatory birds have evolved on islands in the absence of mammalian competitors, notably giant eagles and owls on Cuba [8], but the magnitude of the size increase

in *H. moorei* over its sister taxa is unrivalled. *H. moorei* therefore represents an extreme example of how freedom from competition on island ecosystems can rapidly influence morphological adaptation and speciation.

The phylogeny in Figure 1C also reveals considerable problems with the current classification of the "booted eagle" group (eagles with feathered tarsi), especially the genera *Aquila*, *Hieraetus*, and *Spizaetus*, which are clearly paraphyletic. Assignment of species within these genera has traditionally been problematic (see [9]), so this observation was not unexpected. However, it is apparent the name for the extinct New Zealand eagle should be amended to *Hieraetus moorei* (Haast, 1872) (see Materials and Methods). The inclusion of *H. moorei* with the small *Hieraetus* eagles implies the body size of the New Zealand species has changed by almost an order of magnitude since these lineages diverged. This spectacular evolutionary change illustrates the potential speed of size alteration within lineages of vertebrates and represents yet another example of the remarkable evolutionary processes that occur within island ecosystems.

Materials and Methods

DNA extraction and amplification. DNA was extracted and amplified from two *H. moorei* bones (Table S1) as previously described [10] using appropriate ancient DNA techniques. “Modern” toepad tissue (museum specimens) was extracted using Qiagen (Valencia, California, United States) DNeasy tissue extraction kits. Multiple negative extraction and amplification controls were included, to detect contamination. All PCR reactions were conducted as described in [10] using Platinum Taq HiFi (Invitrogen, Carlsbad, California, United States) together with the *cyt b* and ND2 primers listed in Table S2. Thermal cycling conditions were typically 40 cycles of 95 °C/55–60 °C/68 °C (30–45 s each). Sequences were determined using ABI Big Dye (v.3.1) on an ABI 3100 or 3730 (Applied Biosystems, Foster City, California, United States), according to manufacturer's instructions. Modern samples, and ancient samples subsequent to PCR amplification, were analysed in the Zoology Department, Oxford University. A single *Harpagornis* bone was sent to an ancient DNA facility at University College London (I. Barnes) for independent replication, where identical sequences were obtained for two *cyt b* amplifications. Similar *cyt b* and ND2 tree topologies, in addition to multiple overlapping sequences, make it unlikely that we are detecting a nuclear pseudogene.

Phylogenetic methods. Maximum-likelihood trees for *cyt b* and ND2 were selected using a heuristic search as implemented in PAUP*4.0b10 [11] under the HKY + Γ_4 + I substitution model. The assumption of a molecular clock was tested using a likelihood ratio test in which the χ^2 test statistic was two times the log likelihood difference between clock and non-clock models. For the *cyt b* tree the assumption of rate constancy was not rejected. Node support was evaluated for 1,000 bootstrap replicates. Bayesian Markov Chain Monte Carlo phylogenies were also generated on the *cyt b* dataset using BEAST [12] and MrBayes [13] under similar substitution models—the topology of these trees was consistent with Figure 1C and generated posterior support values higher than the bootstrap values.

Using the maximum-likelihood tree in Figure 1C, an independent-contrasts analysis was employed to determine whether correlations existed between phylogenetic position and body mass. Mean live weight estimates were obtained from the literature, and the average mass of *H. moorei* was estimated from femur length [2]. A test to measure the index of phylogenetic dependence was conducted; this measures the degree to which traits vary across taxa (in a phylogeny) in accordance with predictions of a neutral Brownian model according to [14]. The results (not shown) clearly demonstrate that the mass of *H. moorei* is clearly an “outlier” in the context of the phylogeny presented here.

Hieraetus systematics. The type species for the genus *Hieraetus* is *H. pennatus* (Gmelin, 1788); therefore, the taxa grouping strongly with *H. pennatus* must remain in that genus. The close genetic relationship of *H. morphnoides* with *H. pennatus* firmly embeds this species in *Hieraetus*. However, the New Guinea subspecies presently recognised

as *H. morphnoides weiskei* is genetically, geographically, and morphologically distinct and warrants species status, which necessitates the new combination *Hieraetus weiskei* (Reichenow, 1900). *Harpagornis moorei* is included in the clade with *H. pennatus* and *H. morphnoides*, and hence its generic assignment must reflect that. The name for the extinct *Harpagornis moorei* of New Zealand should therefore be amended to *Hieraetus moorei* (Haast, 1872).

Supporting Information

Figure S1. Maximum-likelihood tree generated using 434 bp of ND2 data from a subset of eagle taxa. The tree topology seen here is identical to that seen in Figure 1C and is an independent verification of the tree topology.

Found at DOI: 10.1371/journal.pbio.0030009.sg001 (89 KB PDF).

Table S1. List of Eagle Taxa Used in This Study along with Museum Accession Numbers and Sample Provenance

Found at DOI: 10.1371/journal.pbio.0030009.st001 (64 KB PDF).

Table S2. List of Avian *cyt b* and ND2 Primers Used in This Study

Found at DOI: 10.1371/journal.pbio.0030009.st002 (54 KB PDF).

Accession Numbers

Sequences have been deposited in GenBank (<http://www.ncbi.nlm.nih.gov/Genbank/index.html>) under accession numbers AY754044 to AY754056.

Acknowledgments

We would like to acknowledge the following institutions for samples: Museum of New Zealand Te Papa Tongarewa (P. Millener, A. J. D. Tennyson, and J. A. Bartle), Oxford Museum of Natural History (M. Nowak-Kemp), and the Natural History Museum, Tring (R. Prys-Jones, M. Adams, and S. Parry). We thank Elisabeth Haring for discussing unpublished data, Trevor Worthy, Matthew Phillips, Rob Freckleton, David Mindell, and the Ancient Biomolecules Centre for helpful discussions, Rod Morris and Becky Williams for contributions of photographs, and John Megahan for artwork. Financial support was provided by Natural Environment Research Council (MB, AC, BS), the Wellcome Trust (IB, BS, AC), Leverhulme Trust (AC), and Foundation for Research Science and Technology New Zealand (RNH).

Competing interests. The authors have declared that no competing interests exist.

Author contributions. MB, AC, and RNH conceived and designed the experiments. MB, MS, HRL, IB, and BS performed the experiments. MB and BS analyzed the data. MB and RNH wrote the paper. ■

References

1. Worthy TH, Holdaway RN (2002) The lost world of the moa: Prehistoric life of New Zealand. Bloomington (Indiana): Indiana University Press. 718 p.
2. Holdaway RN (1994) An exploratory phylogenetic analysis of the genera of the Accipitridae, with notes on the biogeography of the family. In Meyburg BU, Chancellor RD, editors. Raptor conservation today. Berlin: WORLD Working Group on Birds of Prey and Owls and the Pica Press. pp. 601–649.
3. Palkovacs EP (2003) Explaining adaptive shifts in body size on islands: A life history approach. *Oikos* 103: 37–44.
4. Cooper A, Poinar HN (2000) Ancient DNA: Do it right or not at all. *Science* 289: 1139–1139.
5. Krajewski C, King DG (1996) Molecular divergence and phylogeny: Rates and patterns of cytochrome b evolution in cranes. *Mol Biol Evol* 13: 21–30.
6. Paxinos EE, James HF, Olson SL, Sorenson MD, Jackson J, et al. (2002) mtDNA from fossils reveals a radiation of Hawaiian geese recently derived from the Canada goose (*Branta canadensis*). *Proc Natl Acad Sci U S A* 99: 1399–1404.
7. Shapiro B, Sibthorpe D, Rambaut A, Austin J, Wrang GM, et al. (2002) Flight of the dodo. *Science* 295: 1683–1683.
8. Arredondo O (1976) The great predatory birds of Cuba. In: Olson SL, editor. Collected papers in avian paleontology honoring the 90th birthday of Alexander Wetmore. Washington (D.C.): Smithsonian Institution Press. pp. 169–187.
9. Brown LH, Amadon D (1968) Eagles, hawks and falcons of the world, Volume 2. London: Country Life. 945 p.
10. Bunce M, Worthy TH, Hoppitt W, Willerslev E, Drummond A, et al. (2003) Extreme reversed sexual size dimorphism in the extinct New Zealand moa *Dinornis*. *Nature* 425: 172–175.
11. Swofford DL (2001) PAUP*: Phylogenetic analysis using parsimony (* and other methods), version 4 [computer program]. Sunderland (Massachusetts): Sinauer.
12. Drummond AJ, Rambaut A (2003) BEAST, version 1.1.2 [computer program]. Available: <http://evolve.zoo.ox.ac.uk/beast/>. Accessed 12 November 2004.
13. Huelsenbeck JP, Ronquist F (2001) MrBayes: Bayesian inference of phylogeny. *Bioinformatics* 17: 754–755.
14. Freckleton RP, Harvey PH, Pagel M (2002) Phylogenetic analysis and comparative data: A test and review of evidence. *Am Nat* 160: 712–726.