



STRUCTURAL AND METAMORPHIC RELATIONS  
BETWEEN LOW, MEDIUM AND HIGH GRADE  
ROCKS, MT FRANKS - MUNDI MUNDI AREA,  
BROKEN HILL, N.S.W.

by

Richard Arthur Glen, B.Sc.(Hons.) (Sydney)

PART II

of two parts plus Appendices

Department of Geology and Mineralogy  
University of Adelaide  
April, 1978.

*Awarded December 1978*



# GEOLOGY OF THE MT. FRANKS - MUNDI MUNDI AREA

## LITHOLOGICAL REFERENCE

Lithological boundaries - definite, approximate (traversing and photo-interpretation), approximate (screes), inferred

Robe Beds with Mundi Mundi facies (m), massive psammites and Mt Franks facies (f) dotted where migmatized

Apollon Beds with chistalite schist (ch), andalusite schist (ab), carbonaceous schist (c) and quartz mica schist (QM)

Panell Beds

Amphibolite

Quartzfeldspar schist

Calc silicate rock

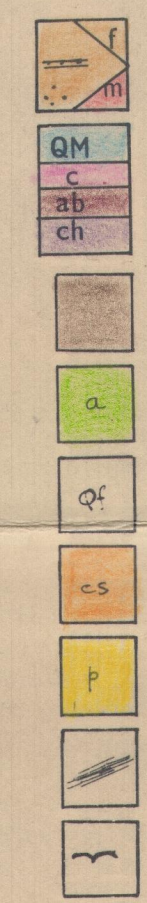
Granitoid - often with intermixed metasediments

Retrograde schist zone

Alluvium

Andalusite / sillimanite isograd - sillimanite on side with dots (as-mixed)

Sillimanite - K feldspar



## STRUCTURAL REFERENCE

Trace of bedding ( $S_0$ )

Direction of younging Class I, Class II

Strike and dip of  $S_0$

Strike and dip of  $S_1$  ( $S_1$ Pe,  $S_1$ Ps where applicable - maps 34 & chapter 6)

Strike and dip of  $S_1 // S_0$

$L_1$  - mineral lineation in  $S_1$

$F_1$  fold - first generation fold in  $S_0, S_0 / S_1$  intersection

Strike and dip of  $S_2$  schistosity (includes axial surface of  $F_2$  folds)

$F_2$  fold - second generation fold in  $S_0 / S_1$

Strike and dip of  $S_3$  schistosity (includes axial surface of  $F_3$  folds)

Strike and dip of  $S_3$

$L_3$  - mineral lineation in  $S_3$

$F_3$  fold - third generation fold in  $S_1$  (includes  $S_1 / S_3$  intersection)

$F_3$  fold with axial plane schistosity

Strike and dip of  $S_4$

$F_4$  fold - fourth generation fold in  $S_1$

Strike and dip of  $S_4$

Sense and plunge of minor folds

Axial plane trace  $F_1$  fold

Axial plane trace  $F_2$  fold

Axial plane trace  $F_3$  fold

Line of cross section

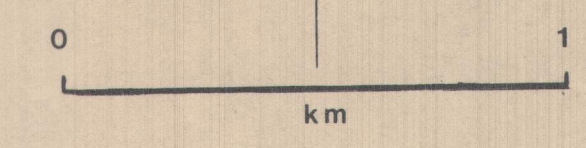
FIG 6.5

Refers to Figures in Chapter 6

where applicable maps 3, 4 & chapter 6

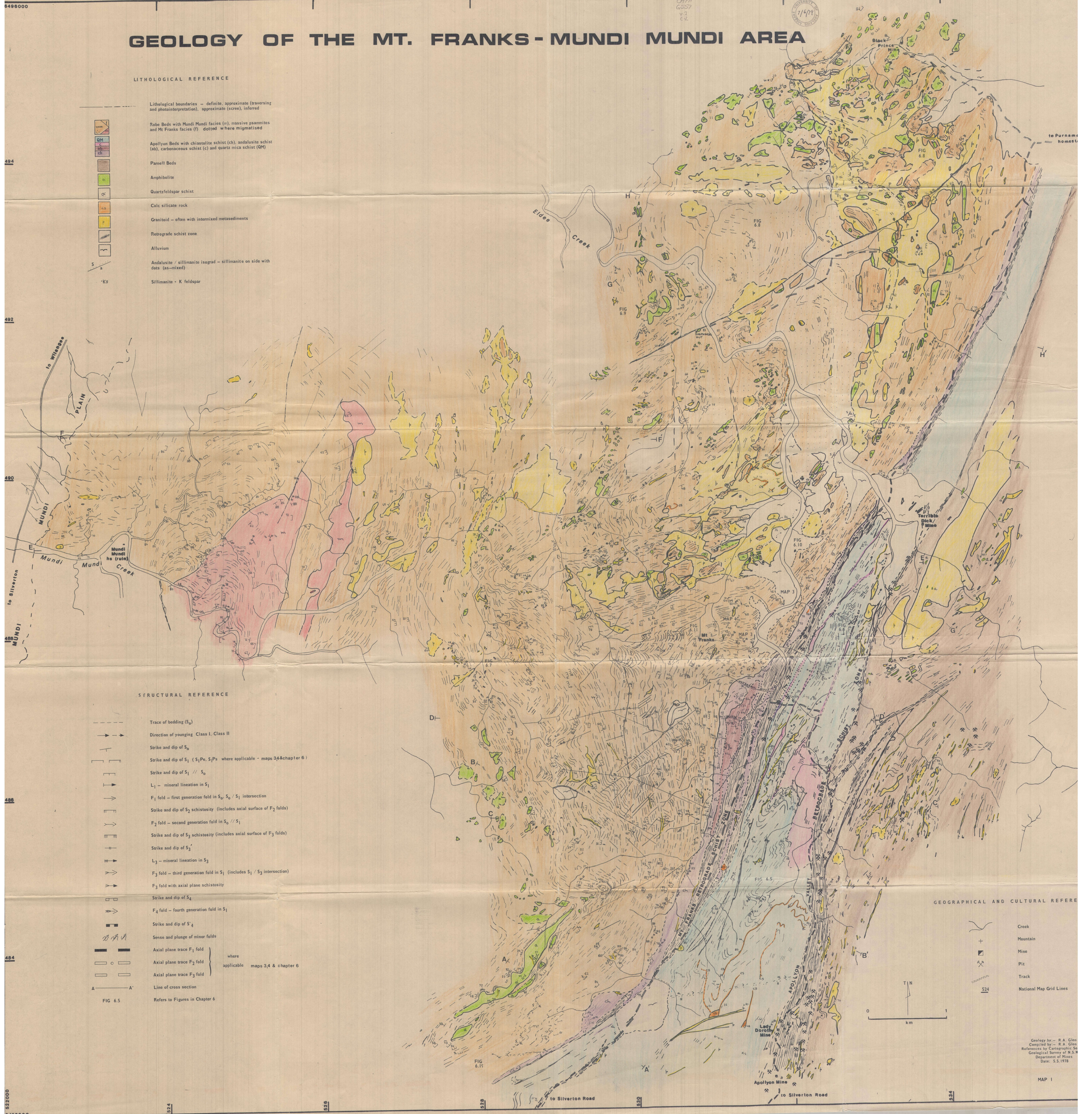
## GEOGRAPHICAL AND CULTURAL REFERENCE

- Creek
- Mountain
- Mine
- Pit
- Track
- National Map Grid Lines



Geology by - R.A. Glen  
Compiled by - R.A. Glen  
References by Cartographic Section  
Geological Survey of N.S.W.  
Department of Mines  
Date: 5.5.1978

MAP 1





71674  
C9 PH  
G557  
V. 1  
C. 2

# SUB AREA BOUNDARIES



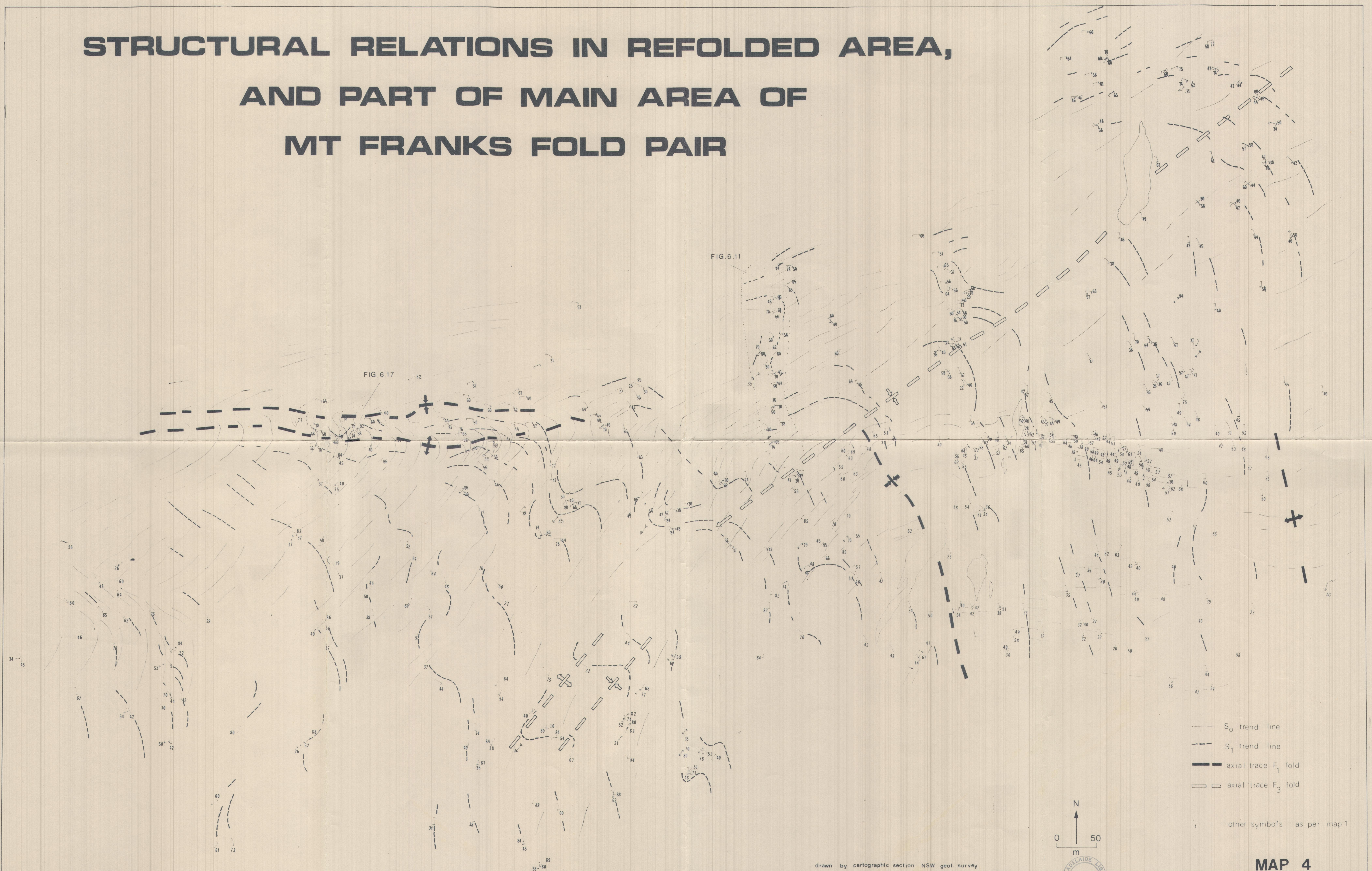
MAP 2



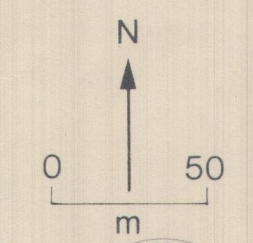




# STRUCTURAL RELATIONS IN REFOLDED AREA, AND PART OF MAIN AREA OF MT FRANKS FOLD PAIR



drawn by cartographic section NSW geol. survey



- S<sub>0</sub> trend line
- - - S<sub>1</sub> trend line
- axial trace F<sub>1</sub> fold
- ▭▭ axial trace F<sub>3</sub> fold
- other symbols as per map 1



0989  
557  
20