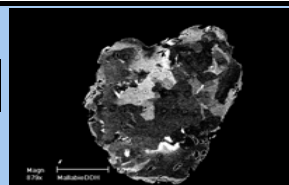
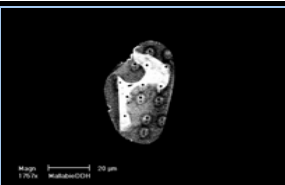


# WELCOME TO MONANAL v1.0

Brought to you by the Continental Evolution Research Group (CERG)  
<http://www.ees.adelaide.edu.au/research/geology/cerg/>



Insert Probe Data

Age and Error

Mole Fractions

Cation Normalisation

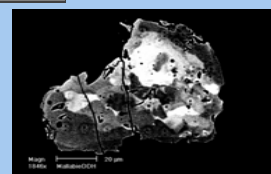
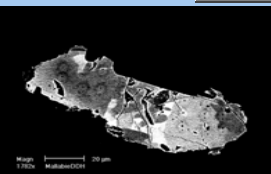
Exchange Vectors

Cation Substitutions

Cation Freq. Distribution

YAG Thermometer

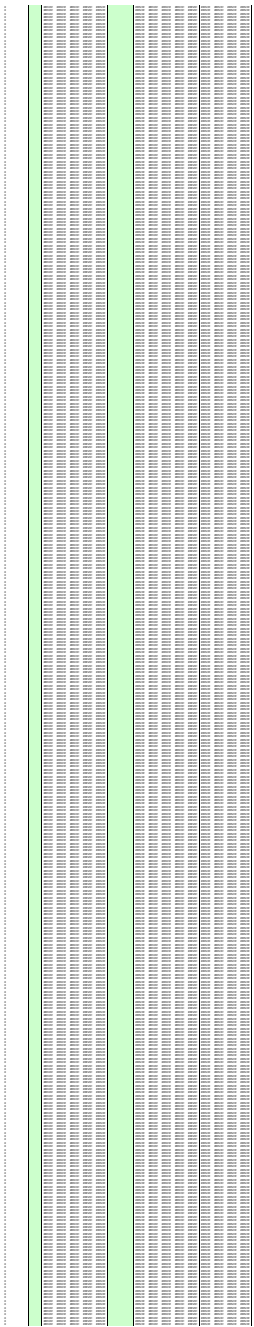
Spidergrams









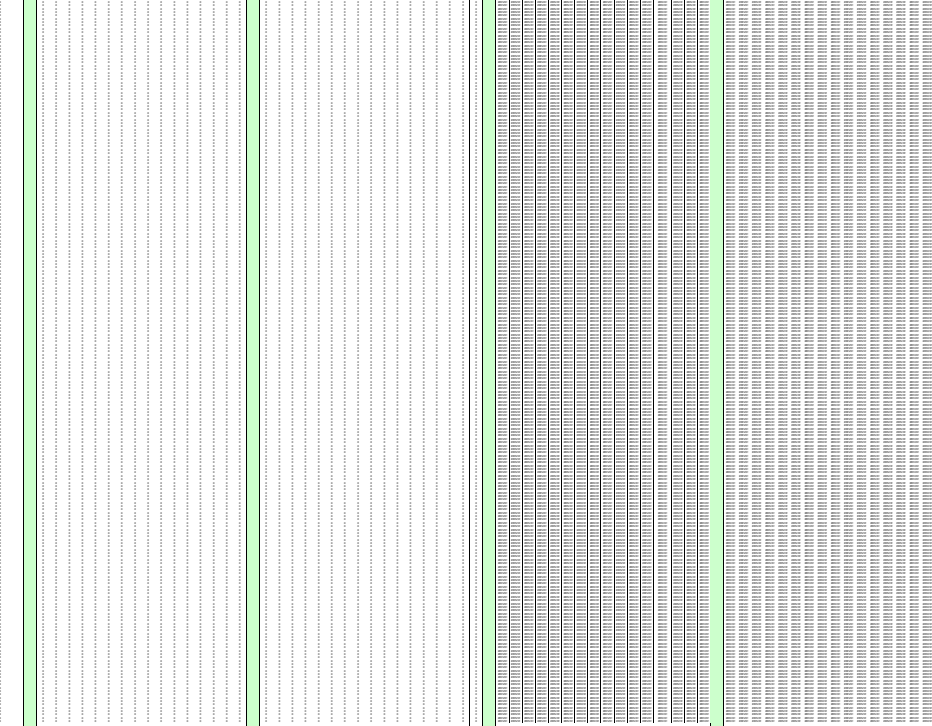








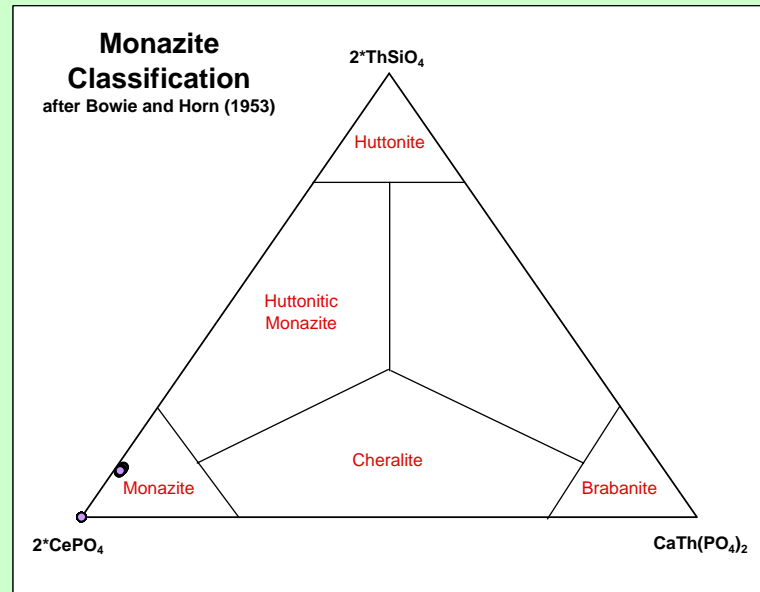
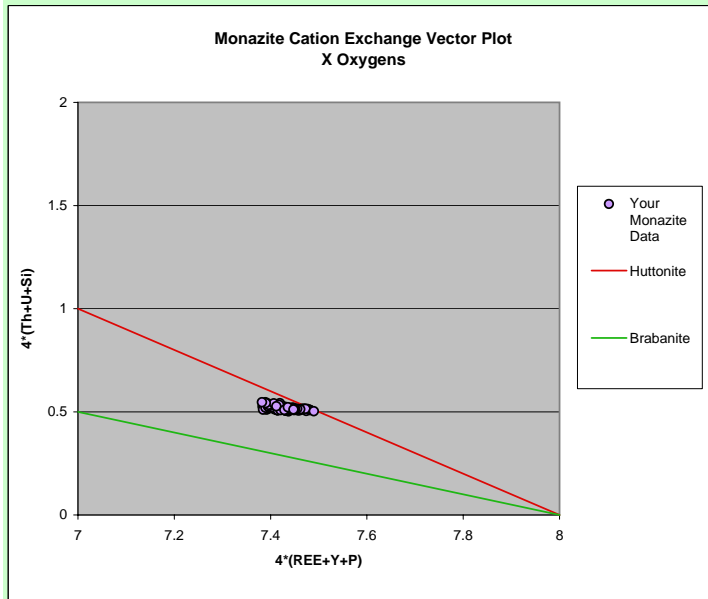




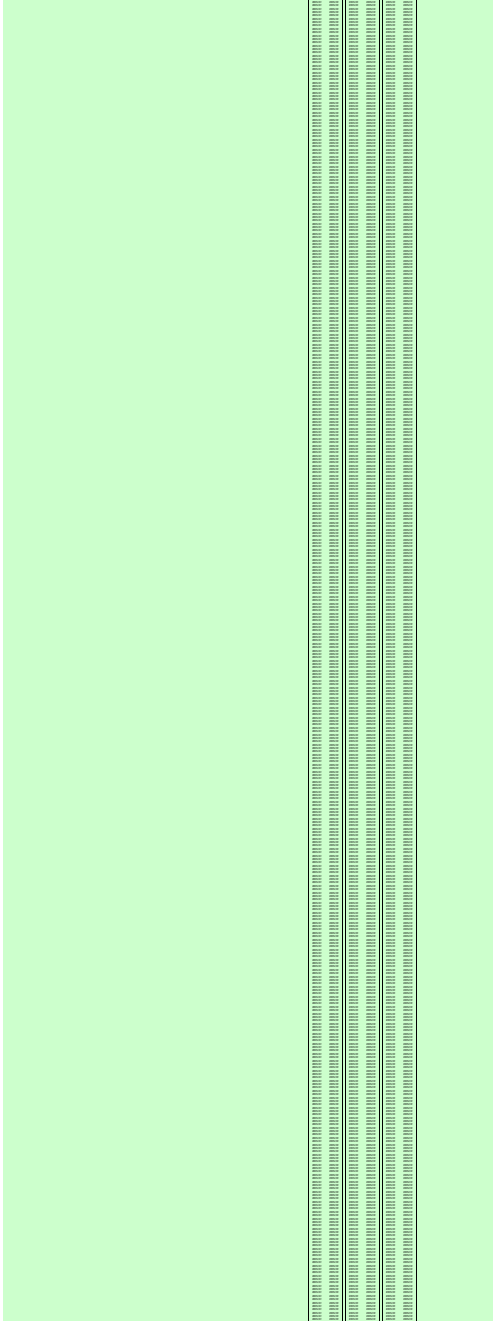
## Exchange Vector Graphs

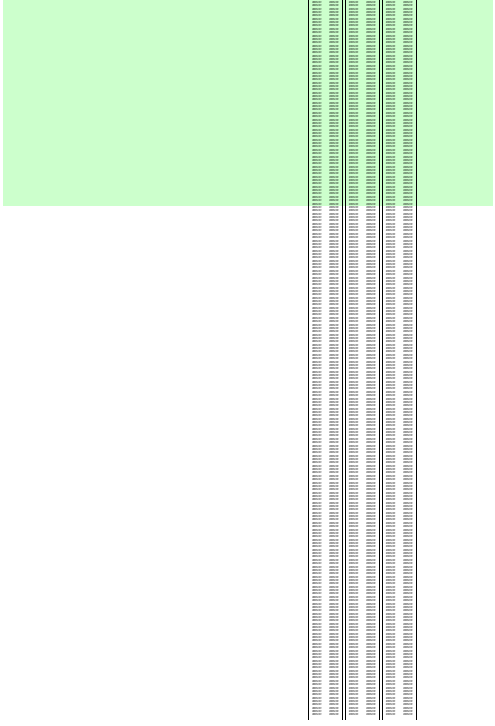
Only implemented for solid solution exchange of your monazites with either Huttonite[(Th,U)SiREE<sub>1</sub>P<sub>-1</sub>] and/or Brabanite[Ca(Th,U)REE<sub>2</sub>]

In the below diagrams you can see that our standard MAD is approximately on a solid solution with Huttonite and plots within the monazite compositional field



Excel spreadsheet with 16 columns and a large grid of data. Includes a legend at the top left with three graphs and a header row.





**Summary**  
 The following table shows the results of the analysis. The first column is the name of the variable, the second column is the number of observations, and the third column is the number of missing values. The fourth column is the mean, the fifth column is the standard deviation, and the sixth column is the minimum value. The seventh column is the maximum value.

Variable	Number of Observations	Number of Missing Values	Mean	Standard Deviation	Minimum	Maximum
Age	100	0	35.5	12.3	18	55
Gender	100	0	0.5	0.5	0	1
Income	100	0	50000	15000	20000	100000
Education	100	0	12	2	9	16
Married	100	0	0.6	0.5	0	1
Children	100	0	2.5	1.5	0	6
Health	100	0	0.8	0.4	0	1
Smoker	100	0	0.3	0.5	0	1
Exercise	100	0	0.2	0.4	0	1
Stress	100	0	0.7	0.5	0	1
Depression	100	0	0.4	0.5	0	1
Loneliness	100	0	0.6	0.5	0	1
Social Support	100	0	0.8	0.4	0	1
Life Satisfaction	100	0	0.7	0.5	0	1
Quality of Life	100	0	0.6	0.5	0	1
Overall Health	100	0	0.8	0.4	0	1

**Descriptive Statistics**  
 The following table shows the descriptive statistics for each variable. The first column is the variable name, the second column is the mean, the third column is the standard deviation, the fourth column is the minimum, and the fifth column is the maximum.

Variable	Mean	Standard Deviation	Minimum	Maximum
Age	35.5	12.3	18	55
Gender	0.5	0.5	0	1
Income	50000	15000	20000	100000
Education	12	2	9	16
Married	0.6	0.5	0	1
Children	2.5	1.5	0	6
Health	0.8	0.4	0	1
Smoker	0.3	0.5	0	1
Exercise	0.2	0.4	0	1
Stress	0.7	0.5	0	1
Depression	0.4	0.5	0	1
Loneliness	0.6	0.5	0	1
Social Support	0.8	0.4	0	1
Life Satisfaction	0.7	0.5	0	1
Quality of Life	0.6	0.5	0	1
Overall Health	0.8	0.4	0	1

**Correlation Matrix**  
 The following table shows the correlation matrix for the variables. The first column is the variable name, and the second column is the correlation coefficient.

Variable	Age	Gender	Income	Education	Married	Children	Health	Smoker	Exercise	Stress	Depression	Loneliness	Social Support	Life Satisfaction	Quality of Life	Overall Health
Age	1.00															
Gender	0.05	1.00														
Income	0.10	0.05	1.00													
Education	0.15	0.05	0.10	1.00												
Married	0.10	0.05	0.10	0.15	1.00											
Children	0.10	0.05	0.10	0.15	0.10	1.00										
Health	0.10	0.05	0.10	0.15	0.10	0.10	1.00									
Smoker	0.10	0.05	0.10	0.15	0.10	0.10	0.10	1.00								
Exercise	0.10	0.05	0.10	0.15	0.10	0.10	0.10	0.10	1.00							
Stress	0.10	0.05	0.10	0.15	0.10	0.10	0.10	0.10	0.10	1.00						
Depression	0.10	0.05	0.10	0.15	0.10	0.10	0.10	0.10	0.10	0.10	1.00					
Loneliness	0.10	0.05	0.10	0.15	0.10	0.10	0.10	0.10	0.10	0.10	0.10	1.00				
Social Support	0.10	0.05	0.10	0.15	0.10	0.10	0.10	0.10	0.10	0.10	0.10	0.10	1.00			
Life Satisfaction	0.10	0.05	0.10	0.15	0.10	0.10	0.10	0.10	0.10	0.10	0.10	0.10	0.10	1.00		
Quality of Life	0.10	0.05	0.10	0.15	0.10	0.10	0.10	0.10	0.10	0.10	0.10	0.10	0.10	0.10	1.00	
Overall Health	0.10	0.05	0.10	0.15	0.10	0.10	0.10	0.10	0.10	0.10	0.10	0.10	0.10	0.10	0.10	1.00

Variable	Mean	Standard Deviation	Minimum	Maximum
Age	35.5	12.3	18	55
Gender	0.5	0.5	0	1
Income	50000	15000	20000	100000
Education	12	2	9	16
Married	0.6	0.5	0	1
Children	2.5	1.5	0	6
Health	0.8	0.4	0	1
Smoker	0.3	0.5	0	1
Exercise	0.2	0.4	0	1
Stress	0.7	0.5	0	1
Depression	0.4	0.5	0	1
Loneliness	0.6	0.5	0	1
Social Support	0.8	0.4	0	1
Life Satisfaction	0.7	0.5	0	1
Quality of Life	0.6	0.5	0	1
Overall Health	0.8	0.4	0	1



.....

.....

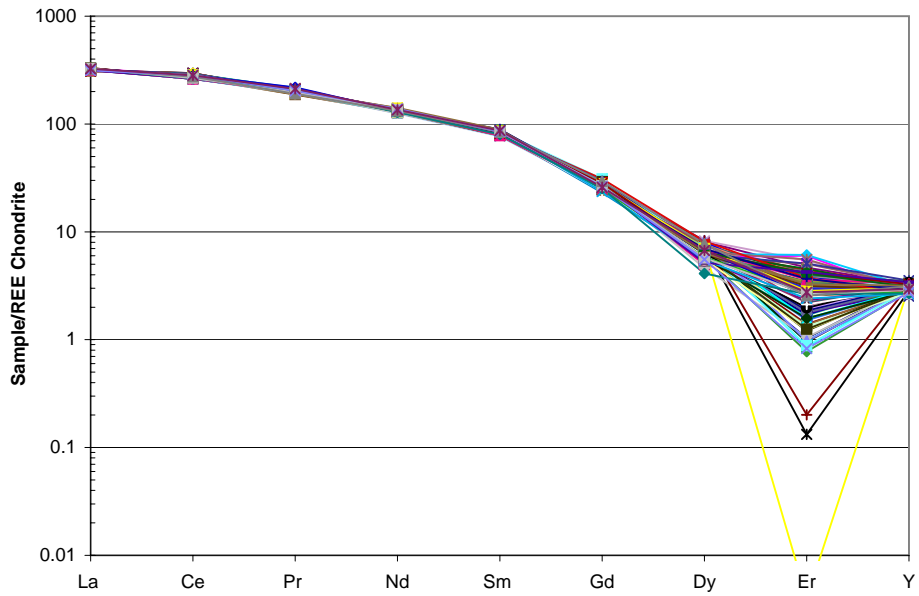




## Chondrite REE and Primitive Mantle Normalised Spidergrams

- 1) Graphs of both REE chondrite normalised to Taylor and McLennan (1985) and Primitive Mantle normalised to Sun and McDonough (1989)
- 2) Graphs should appear automatically

### REE Chondrite Normalised



### Primitive Mantle Normalised

