

*Eucalyptus camaldulensis* (river red gum)  
**Biogeochemistry: An Innovative Tool for Mineral  
Exploration in the Curnamona Province and  
Adjacent Regions**

**Karen A. Hulme, B.Env.Sc (Hons)**



**Geology and Geophysics**  
**School of Earth and Environmental Sciences**  
**The University of Adelaide**  
**April 2008**

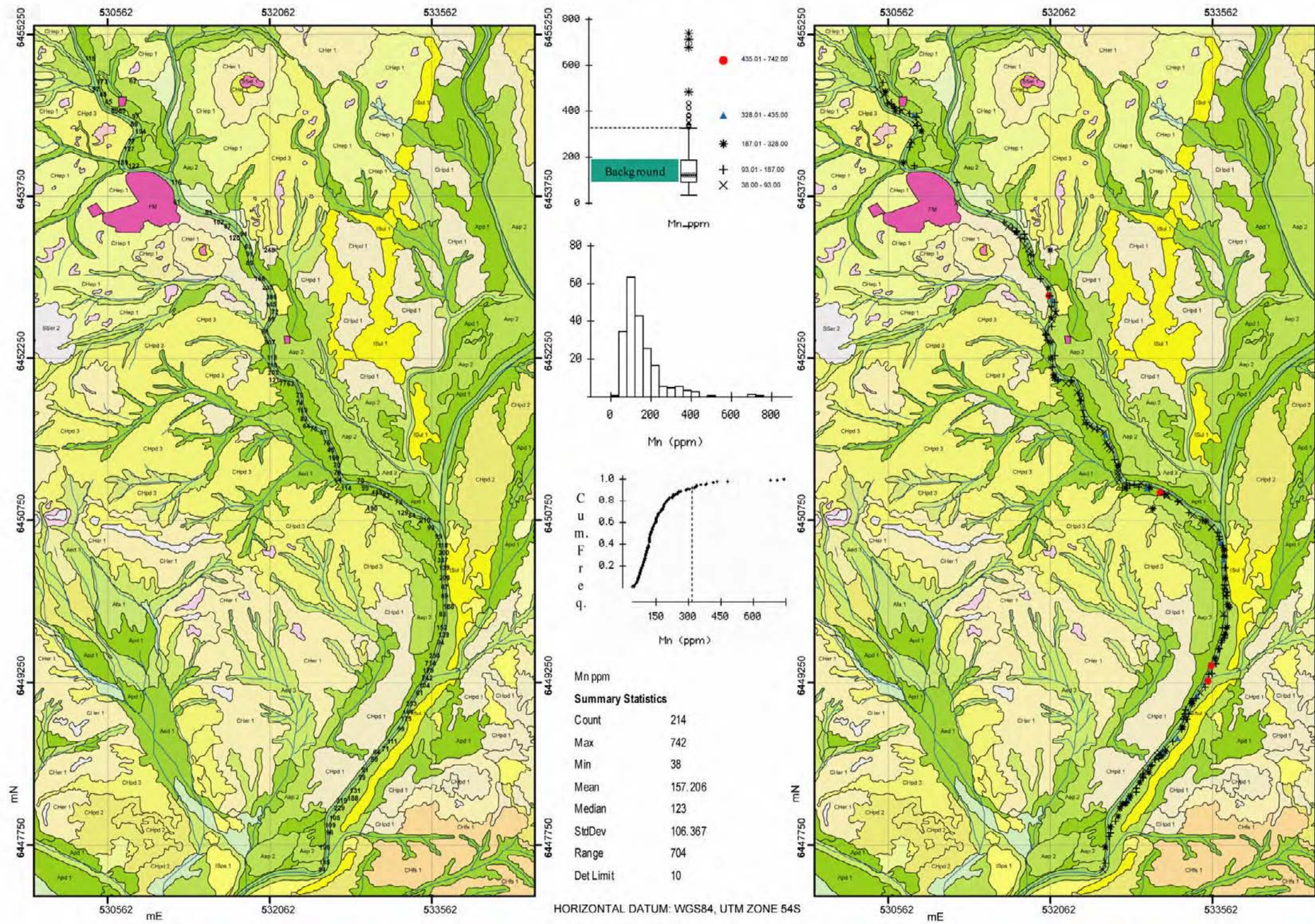
## **APPENDIX H CONTINUED**

**Pine creek (Pinnacles) *E. camaldulensis* biogeochemical**

**maps**



## *E. camaldulensis* (leaves) Biogeochemistry Pine Creek Broken Hill W/NSW - (Mn)



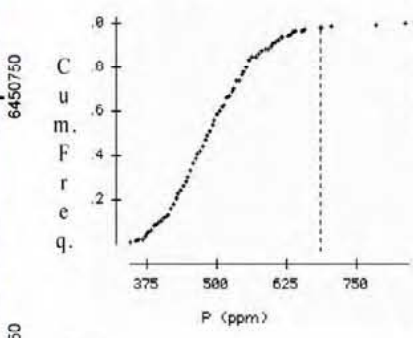
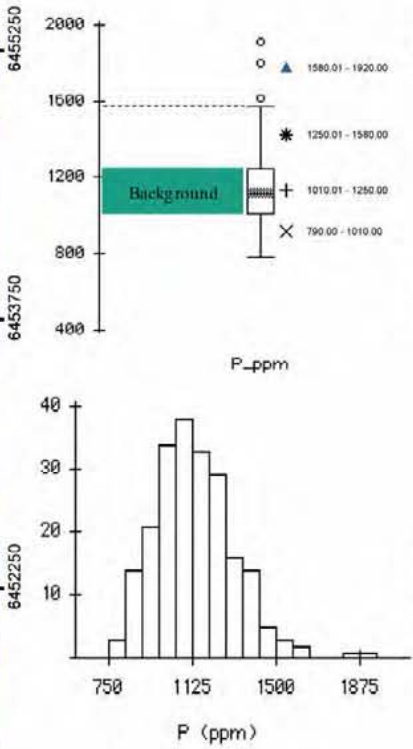
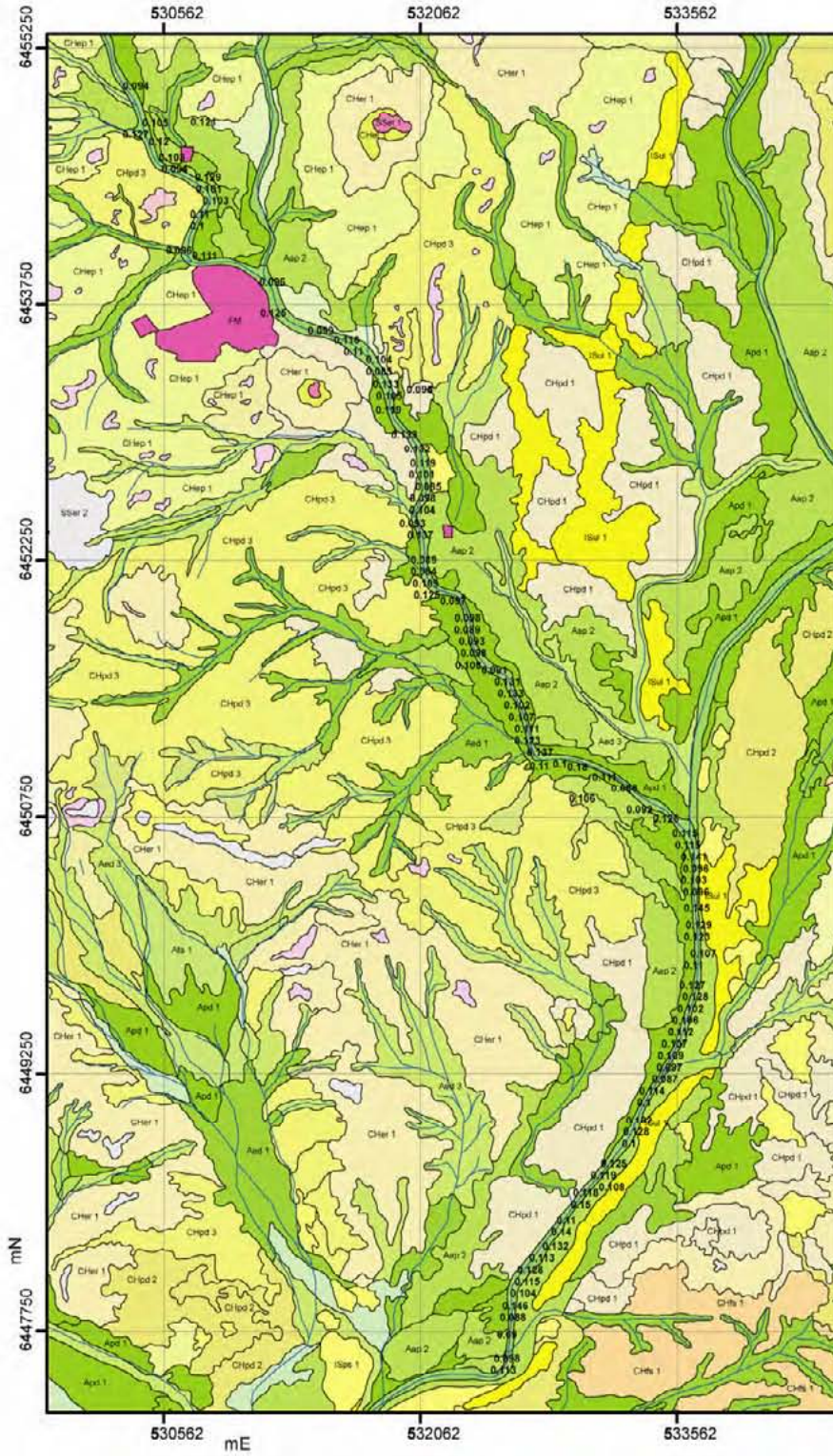
Raw data and spatial distribution of detectable Mn in *E. camaldulensis* (leaves) down Pine Creek with accompanying boxplots, histogram, cumulative frequency plot and summary statistics.







## *E. camaldulensis* (leaves) Biogeochemistry Pine Creek Broken Hill W/NSW - (P)

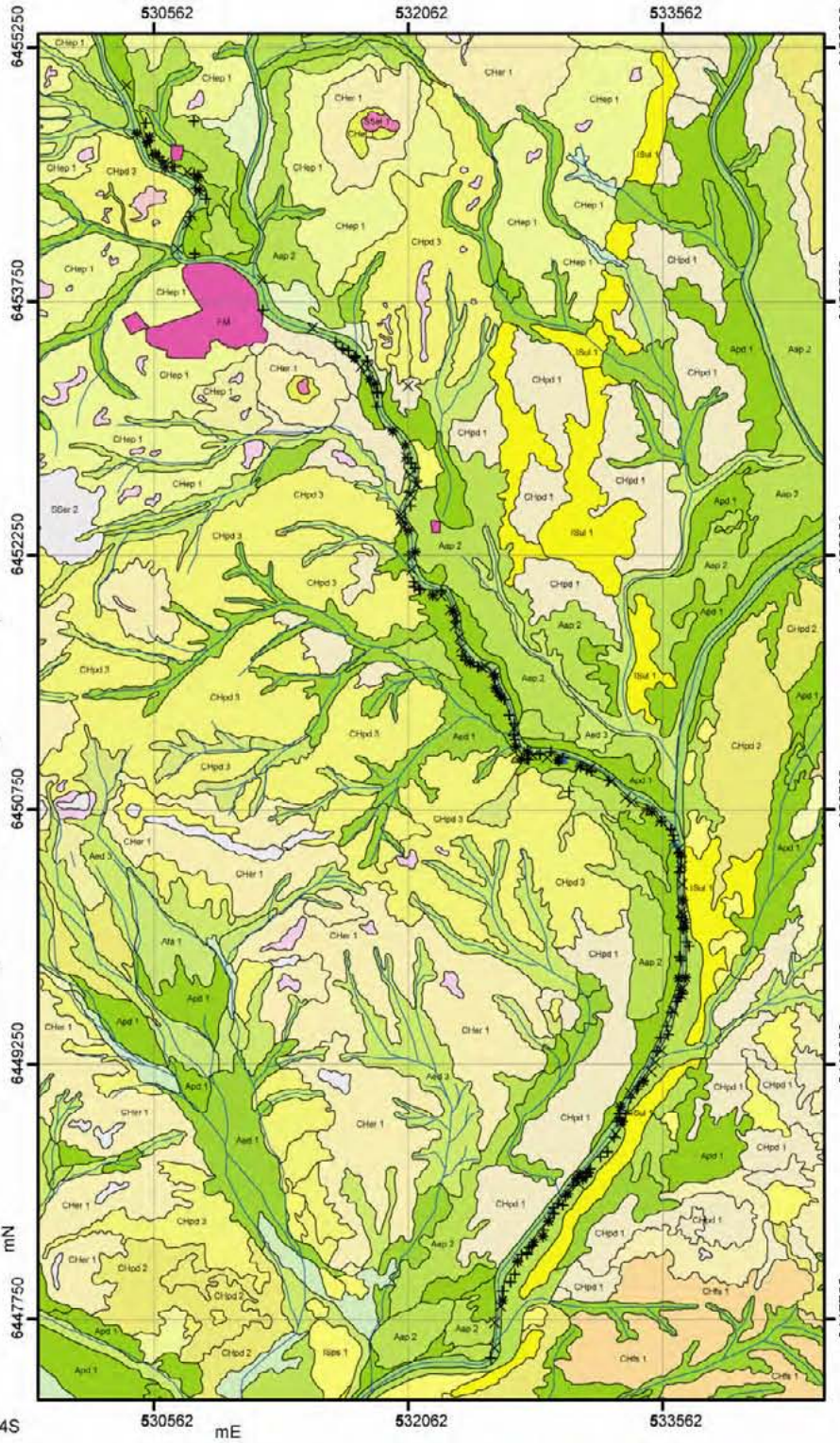


P ppm

**Summary Statistics**

Count	214
Max	1920
Min	790
Mean	1135.98
Median	1120
StdDev	180.192
Range	1130
Det Limit	10

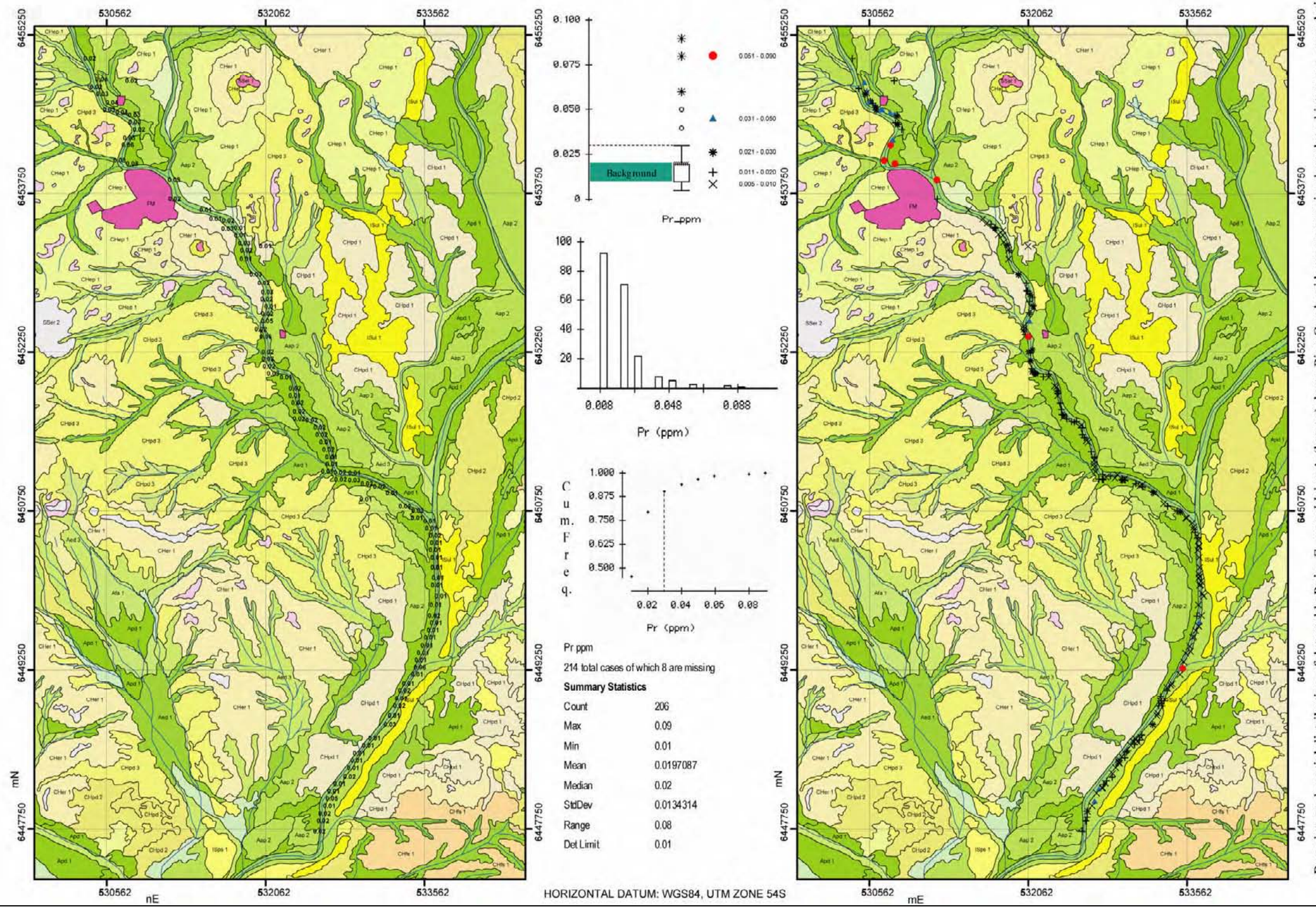
HORIZONTAL DATUM: WGS84, UTM ZONE 54S



Raw data and spatial distribution of detectable P in *E. camaldulensis* (leaves) down Pine Creek with accompanying boxplots, histogram, cumulative frequency plot and summary statistics.



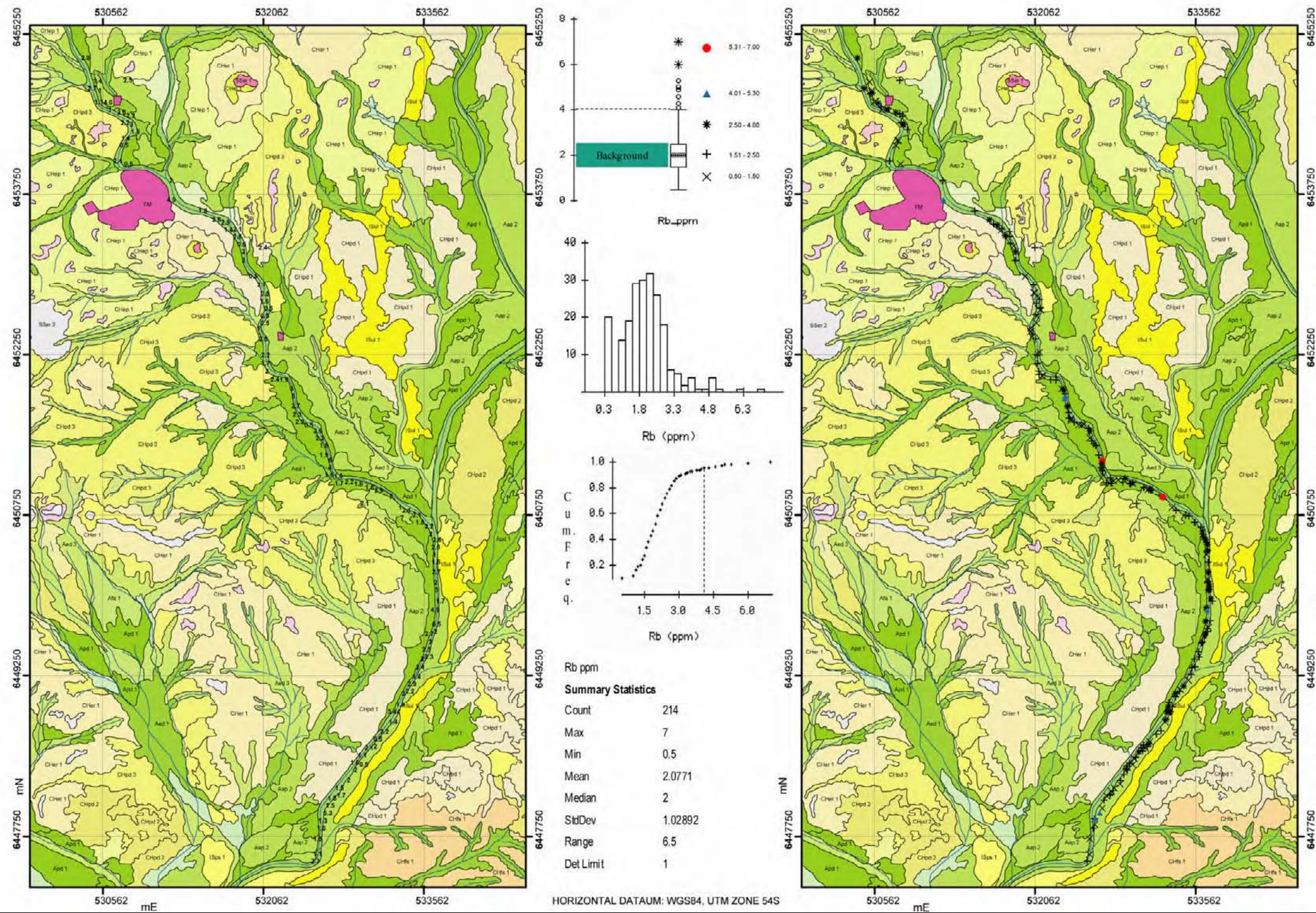
## *E. camaldulensis* (leaves) Biogeochemistry Pine Creek Broken Hill W/NSW - (Pr)



Raw data and spatial distribution of detectable Pr in *E. camaldulensis* (leaves) down Pine Creek with accompanying boxplots, histogram, cumulative frequency plot and summary statistics.



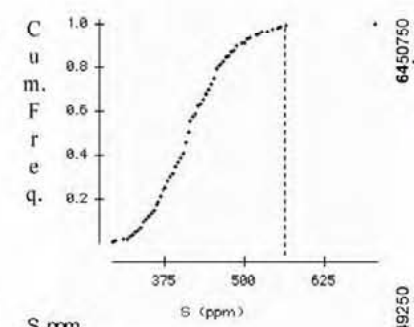
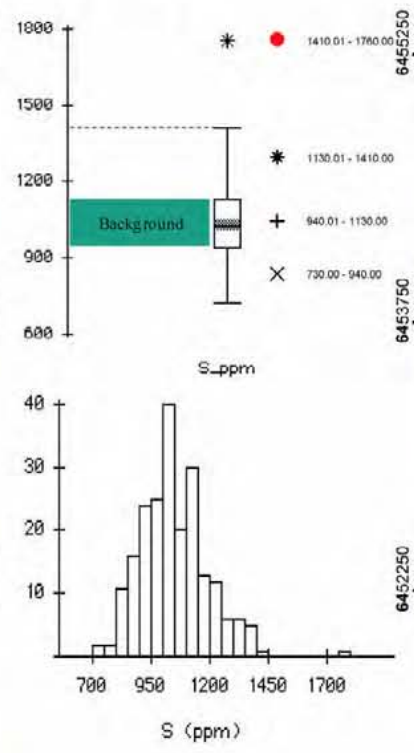
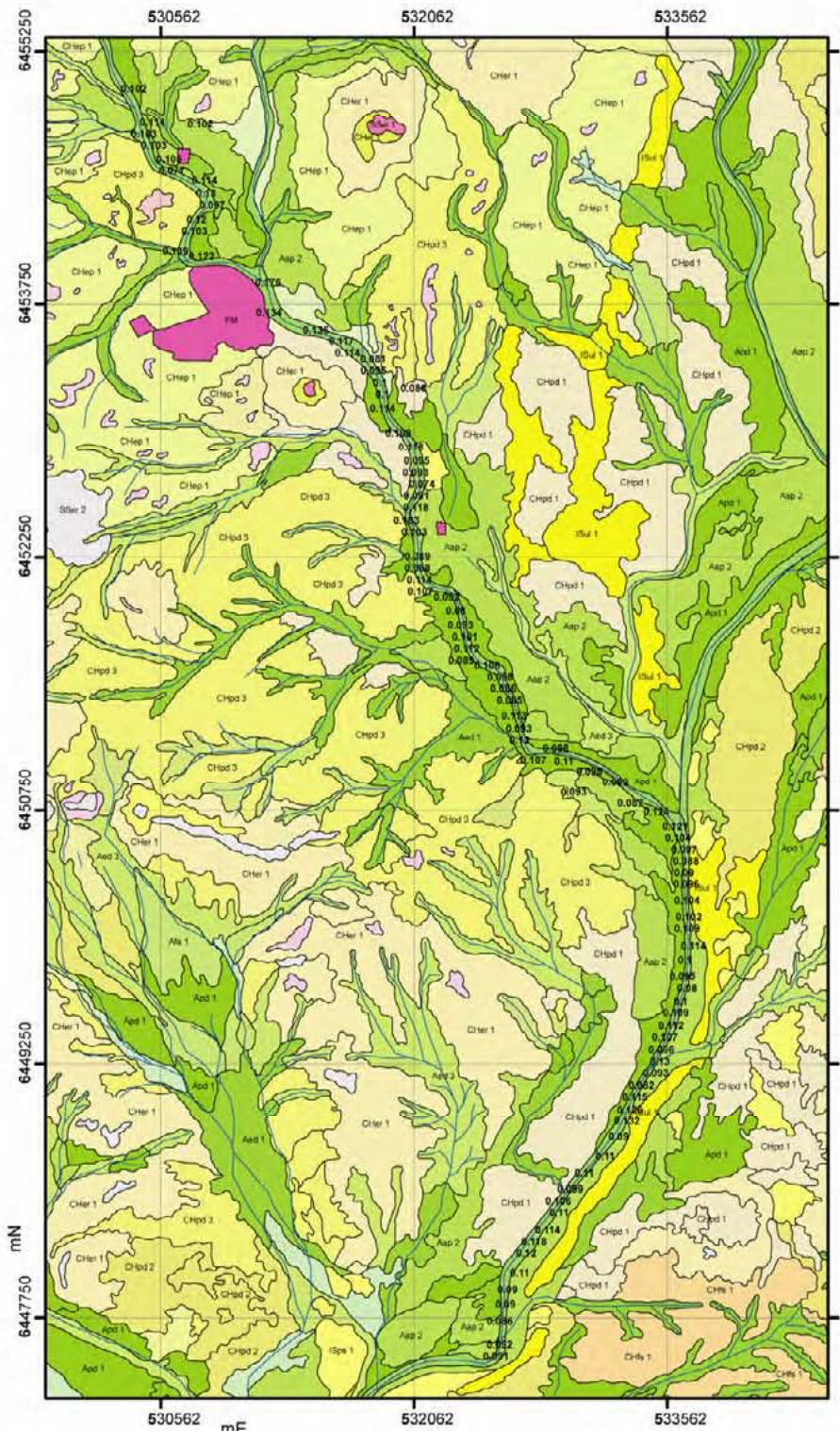
## *E. camaldulensis* (leaves) Biogeochemistry Pine Creek Broken Hill W/NSW - (Rb)



Raw data and spatial distribution of detectable Rb in *E. camaldulensis* (leaves) down Pine Creek with accompanying boxplots, histogram, cumulative frequency plot and summary statistics.

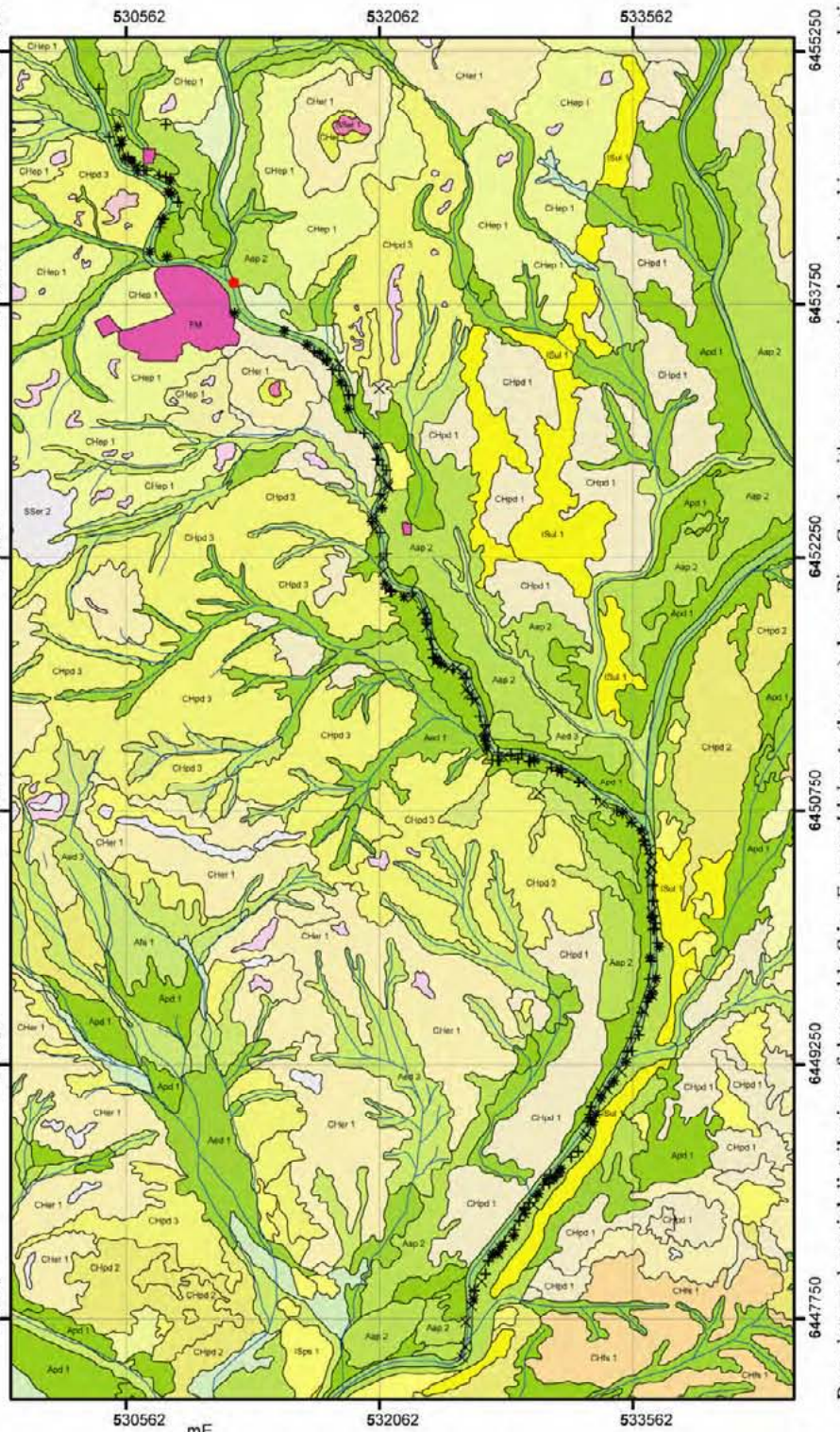


## E. camaldulensis (leaves) Biogeochemistry Pine Creek Broken Hill W/NSW - (S)



S ppm

Summary Statistics	
Count	214
Max	1760
Min	730
Mean	1044.95
Median	1030
StdDev	147.24
Range	1030
Det Limit	10

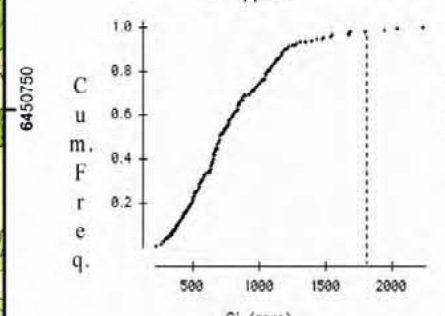
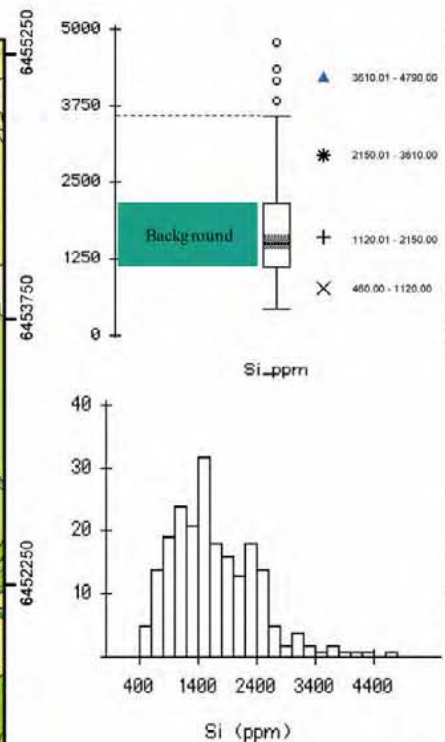
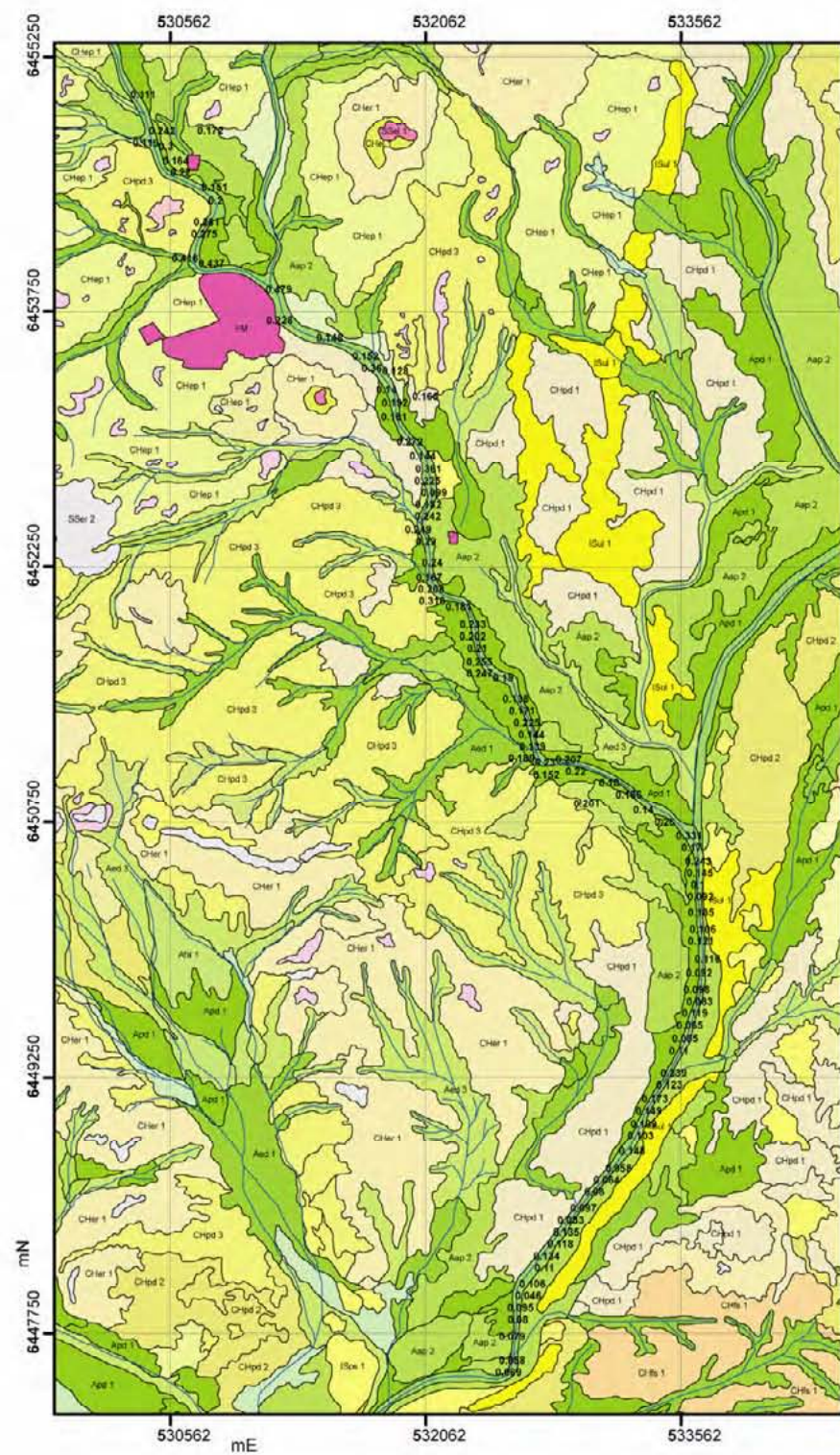


Raw data and spatial distribution of detectable S in *E. camaldulensis* (leaves) down Pine Creek with accompanying boxplots, histogram, cumulative frequency plot and summary statistics.

HORIZONTAL DATUM: WGS84, UTM ZONE 54S



## E. camaldulensis (leaves) Biogeochemistry Pine Creek Broken Hill W/NSW - (Si)

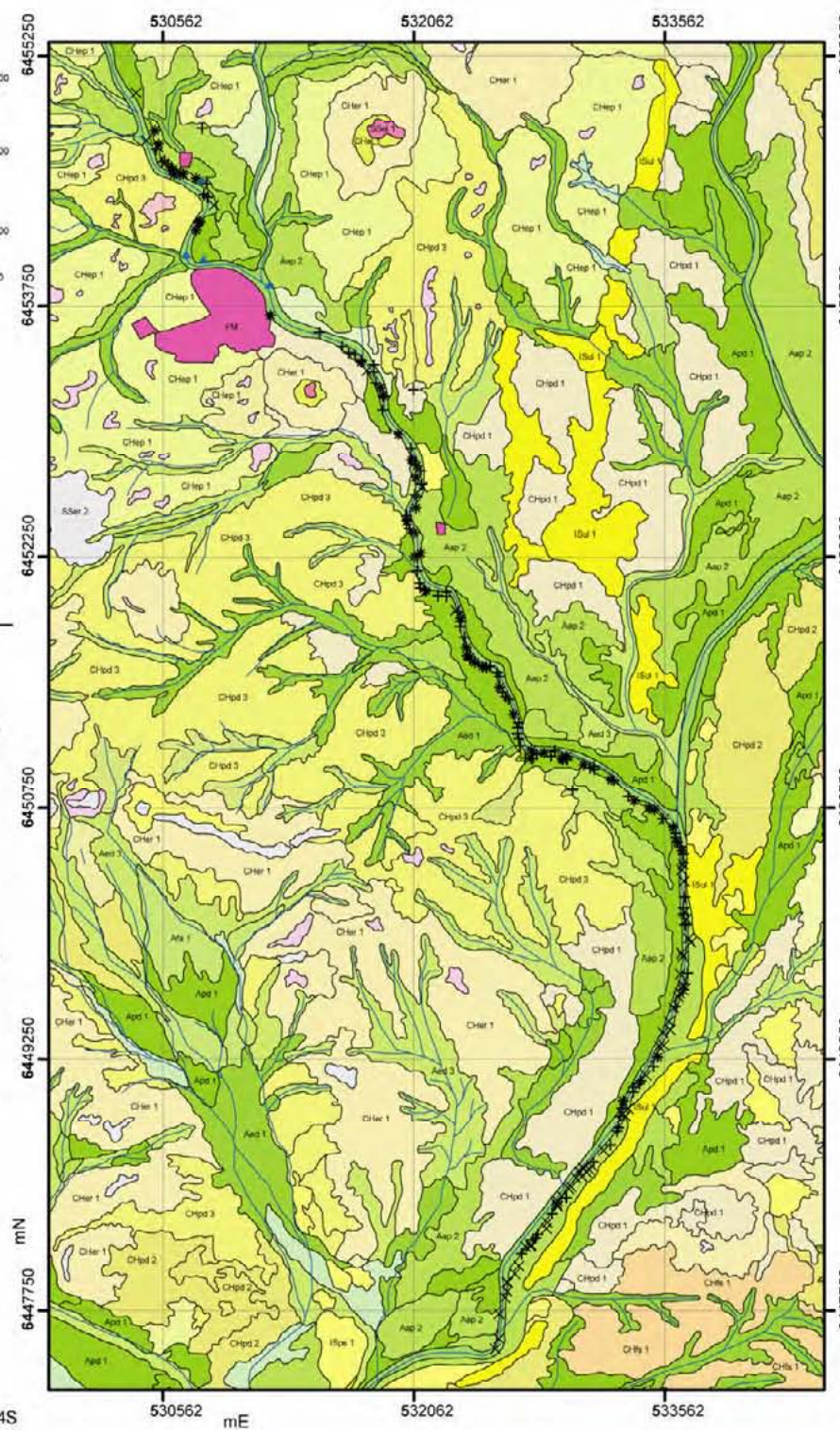


Si ppm

**Summary Statistics**

Count	214
Max	4790
Min	460
Mean	1684.35
Median	1520
StdDev	758.859
Range	4330
Det Limit	60

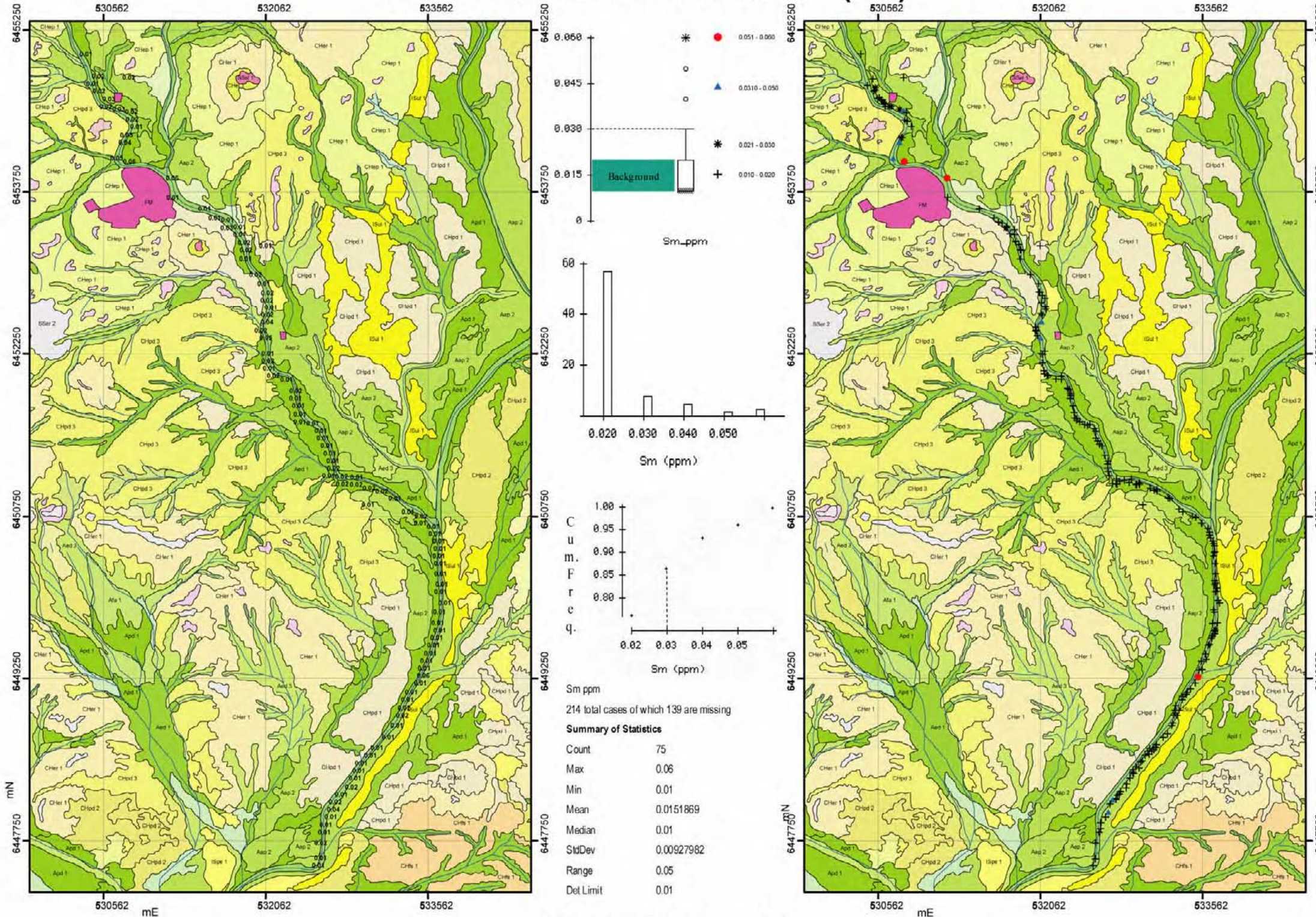
HORIZONTAL DATUM: WGS84, UTM ZONE 54S



Raw data and spatial distribution of detectable Si in *E. camaldulensis* (leaves) down Pine Creek with accompanying boxplots, histogram, cumulative frequency plot and summary statistics.



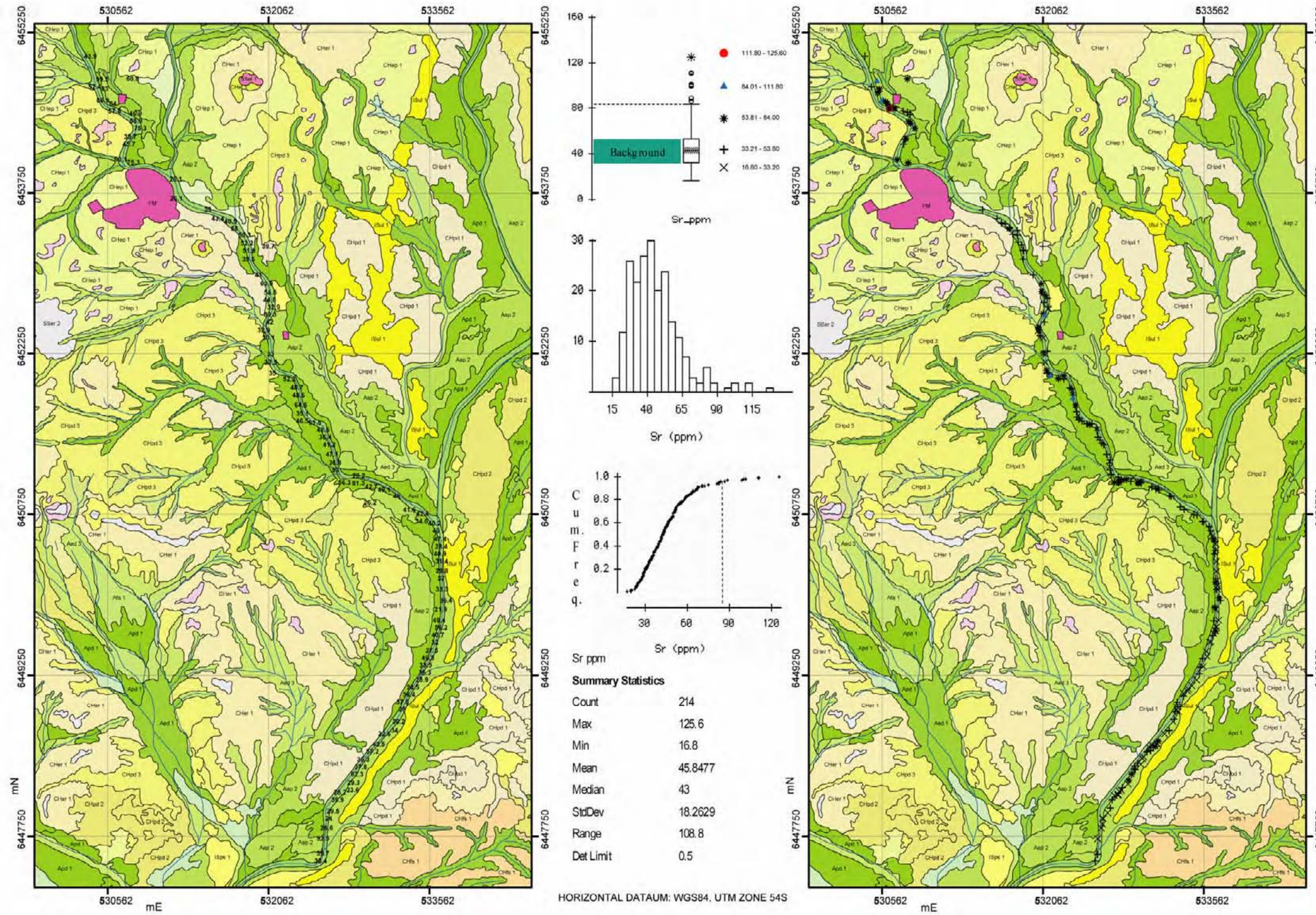
## *E. camaldulensis* (leaves) Biogeochemistry Pine Creek Broken Hill W/NSW - (Sm)



Raw data and spatial distribution of detectable Sm in *E. camaldulensis* (leaves) down Pine Creek with accompanying boxplots, histogram, cumulative frequency plot and summary statistics.



## *E. camaldulensis* (leaves) Biogeochemistry Pine Creek Broken Hill W/NSW - (Sr)



Raw data and spatial distribution of detectable Sr in *E. camaldulensis* (leaves) down Pine Creek with accompanying boxplots, histogram, cumulative frequency plot and summary statistics.