

Eucalyptus camaldulensis (river red gum)
**Biogeochemistry: An Innovative Tool for Mineral
Exploration in the Curnamona Province and
Adjacent Regions**

Karen A. Hulme, B.Env.Sc (Hons)



Geology and Geophysics
School of Earth and Environmental Sciences
The University of Adelaide
April 2008

E. camaldulensis (leaves) Biogeochemistry Pine Creek Broken Hill W/NSW - (Pb)

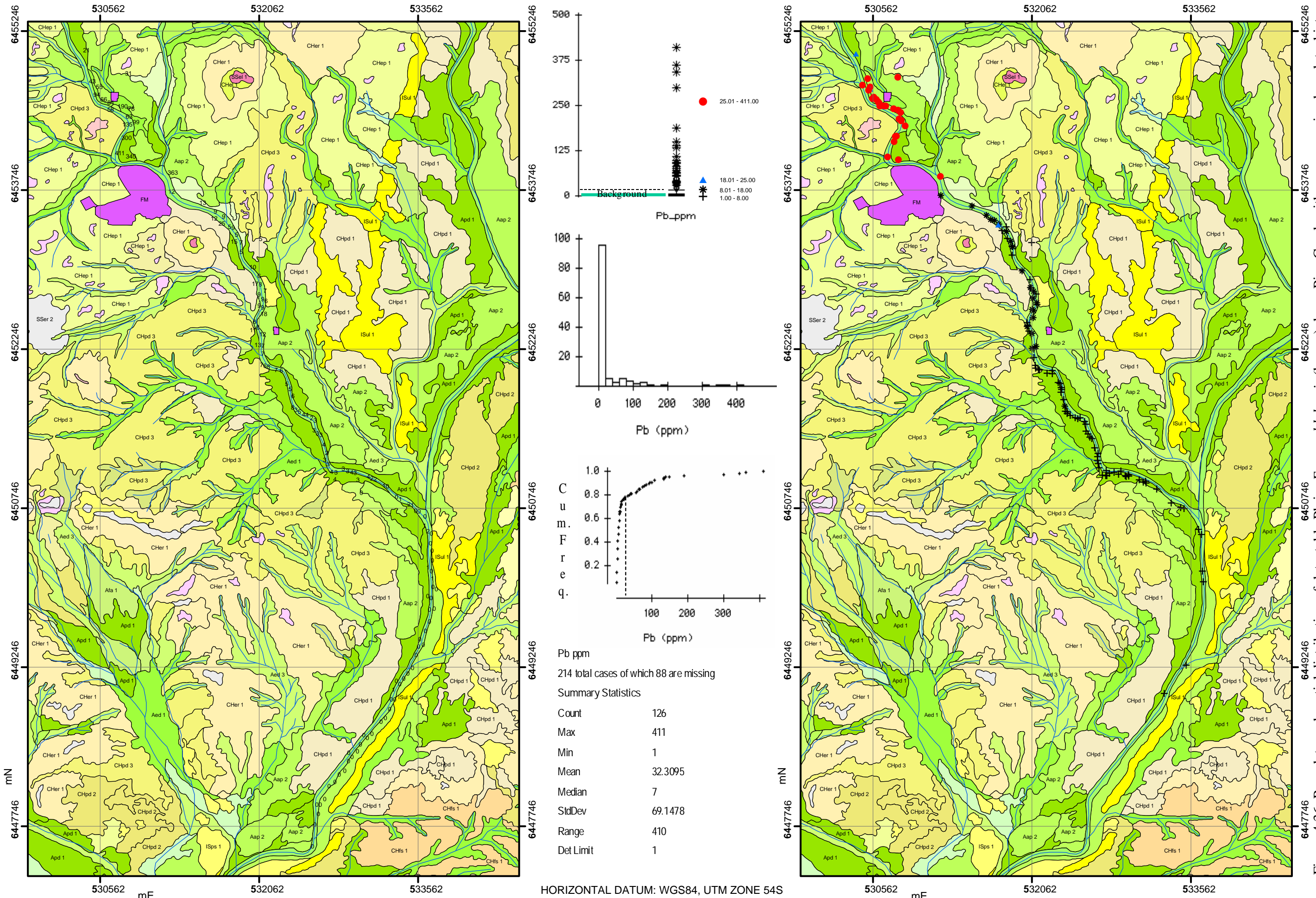


Figure 4.36: Raw data and spatial distribution of detectable Pb in *E. camaldulensis* (leaves) down Pine Creek with accompanying boxplots, histogram, cumulative frequency plot and summary statistics.

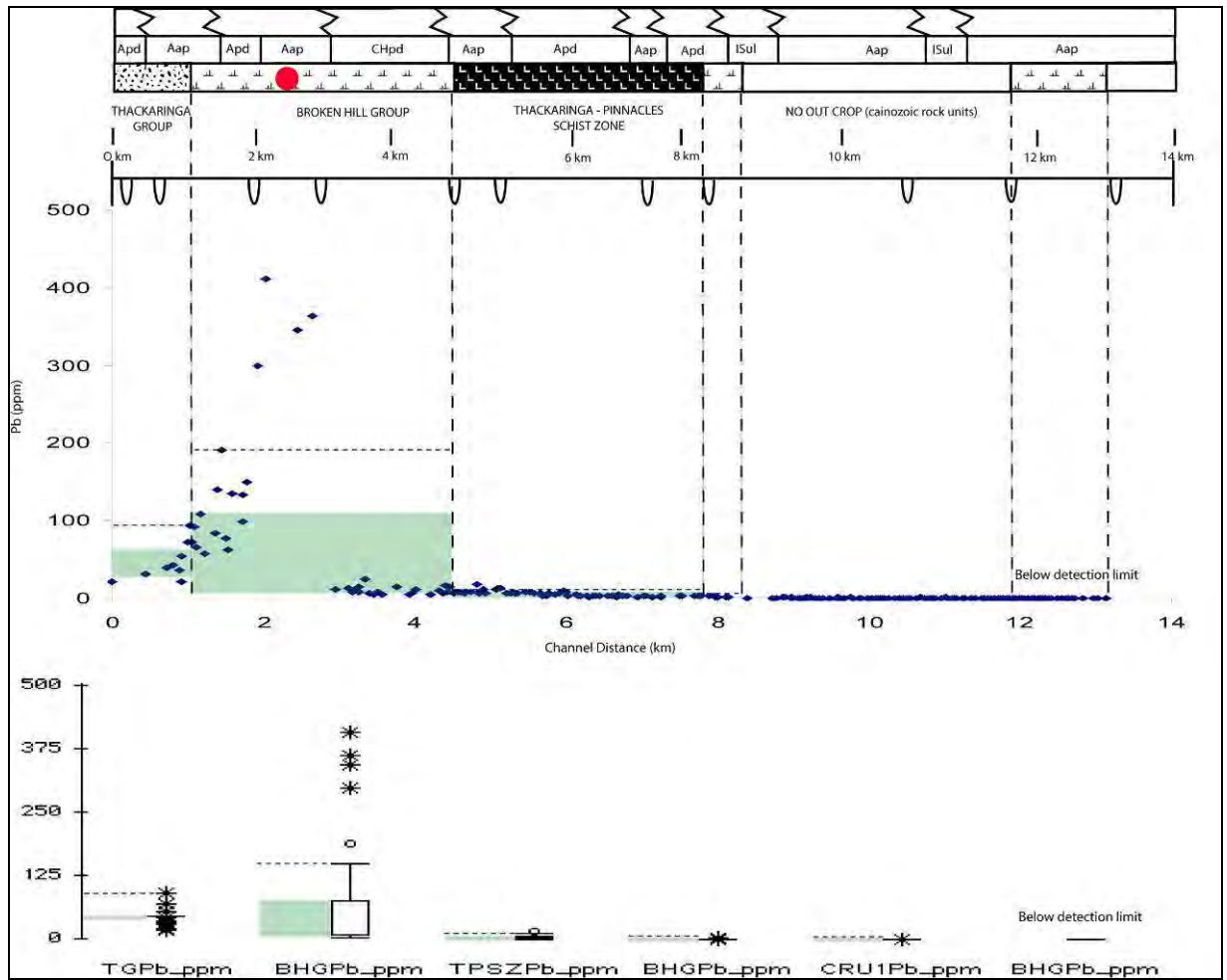


Figure 4.37: Pb concentrations within *E. camaldulensis*, flanking different land-form settings along Pine Creek. Thackaringa Group (TG), Broken Hill Group North (BHG(N)), Thackaringa-Pinnacles Schist Zone (TP/SZ), Broken Hill Group Central (BHGC), Cainozoic rock units (CRU) and Broken Hill Group South (BHGS). Green region denotes 'values below the mean, red dot the approximate location of the Barrier Pinnacles Mine and the dashed line indicates the 90th percentile.

Element (ppm) [detection limit] Analytical Method	Parameters	Total data set (C) n=214	Setting					
			Thackaringa Group TG (Apd, Aap) n=9	Broken Hill Group BHG(N) (Aap, Apd & CHpd) n=42	Thackaringa- Pinnacles Schist Zone TP/SZ (Aap, Apd) n=60	Broken Hill Group BHG (C) (Apd & ISul) n=7	No outcrop (CRU) (ISul, Aap) n=61	Broken Hill Group BHG(S) (Aap) n=35
Pb [1] XRF	Concentration range (Mean)	1.00-411 (32)	21-94 (46)	5-411 (78)	2-18 (6)	*.4 (2)	*-2 (1)	BDL
	25 th - 75 th percentile	8-18	29-60	9-109	3-8	1.3-2.8	1-2	
	95% confidence level	7	18	32	0.84 (6)	1.1	0.4	
	>90 th percentile (outliers), # of samples	18-411 (30)	74-91 (2)	190-411 (5)	18 (1)	No outliers'		
<i>E. camaldulensis</i> position with the greatest concentration.	north part of the Pine Creek catchment, adjacent to the Barrier Pinnacle Mine and depositional regolith- landform units Aap ₂ .	southern margin at the interface between TG and BHG (N). Down stream of an NW intersecting Aed unit. Flanked by regolith-landform units Aap ₂ and CHpd ₃ .	upstream and adjacent to the Barrier Pinnacles Mine. Flanked by regolith- landform units Apd ₁ and CHpd ₃ .	northern margin at the interface between BHG (N) and TP/SZ. Flanked by regolith-landform unit Aap ₂ .	northern margin at the interface between TP/SZ and BHG (CL). Flanked by regolith- landform unit Apd ₁ .			

Table 4.38: Variations of Pb concentrations within *E. camaldulensis* (river red gums), flanking different land-form settings along Pine Creek. Initial values concentration range (mean), 25th - 75th percentile concentration range, 95 % confidence; level, >90th percentile (outliers), C= composite sample, * signifies values below detection limit.

E. camaldulensis (leaves) Biogeochemistry Pine Creek Broken Hill W/NSW - (Sb)

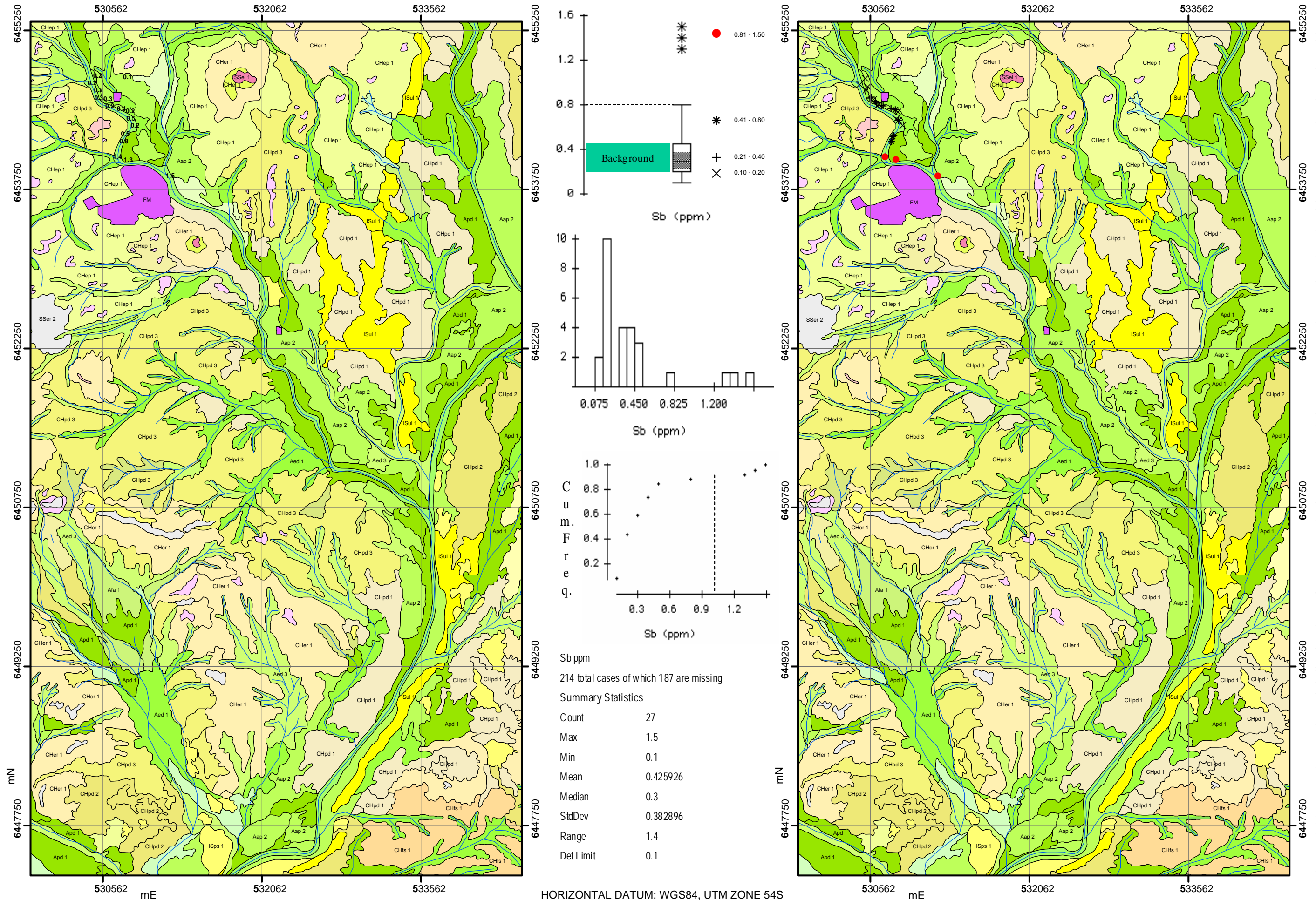


Figure 4.38: Raw data and spatial distribution of detectable Sb in *E. camaldulensis* (leaves) down Pine Creek with accompanying boxplots, histogram, cumulative frequency plot and summary statistics.

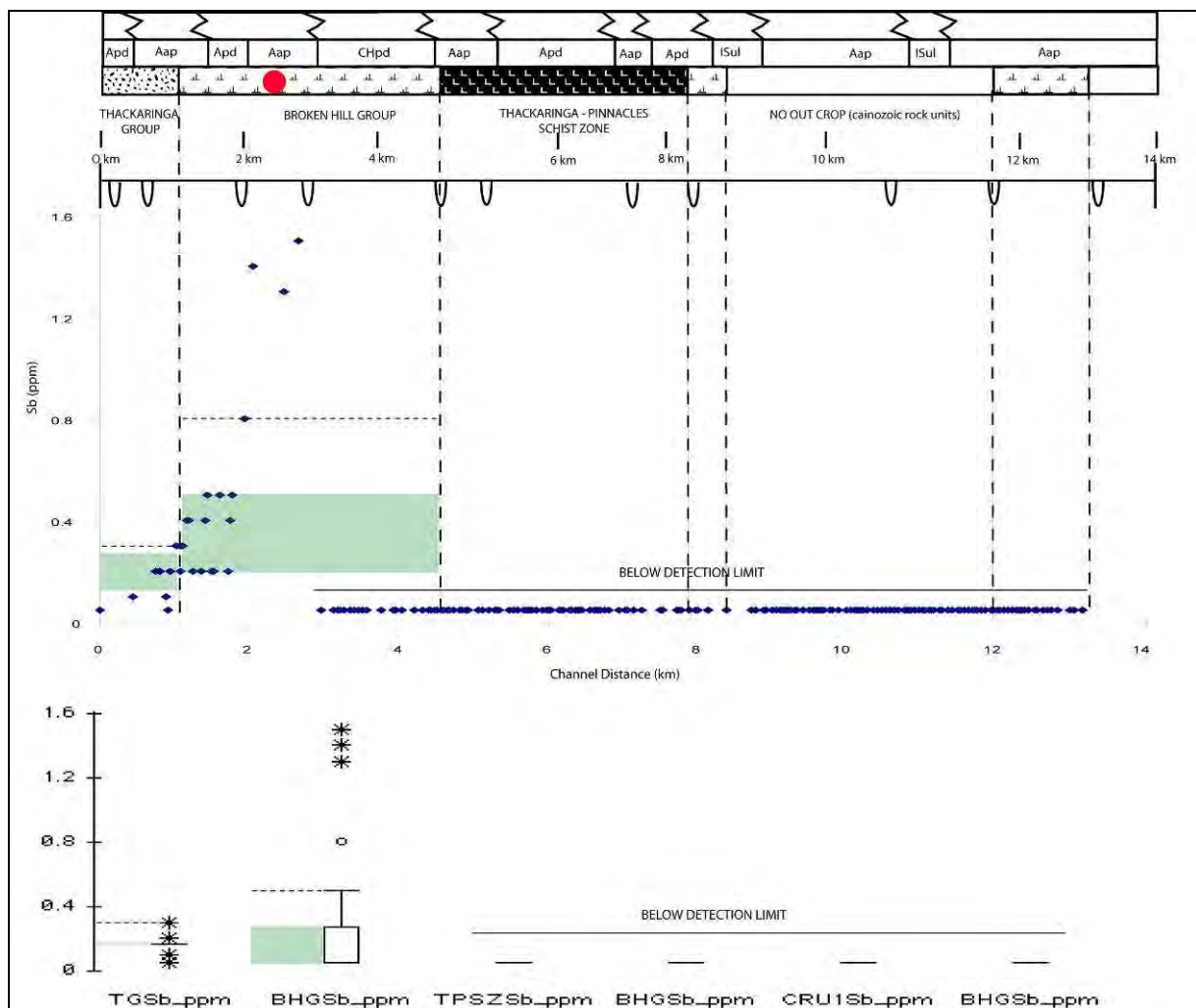


Figure 4.39: Sb concentrations within *E. camaldulensis*, flanking different land-form settings along Pine Creek. Thackaringa Group (TG), Broken Hill Group North (BHGN), Thackaringa-Pinnacles Schist Zone (TP/SZ), Broken Hill Group Central (BHGC), Cainozoic rock units (CRU) and Broken Hill Group South (BHGS). Green region denotes 'values below the mean, red dot the approximate location of the Barrier Pinnacles Mine and the dashed line indicates the 90th percentile.

Element (ppm) [detection limit] Analytical Method	Parameters	Total data set (C) n=214	Setting					
			Thackaringa Group TG (Apd, Aap) n=9	Broken Hill Group BHGN) (Aap, Apd & CHpd) n=42	Thackaringa- Pinnacles Schist Zone TP/SZ (Aap, Apd) n=60	Broken Hill Group BHGC (C) (Apd & ISul) n=7	No outcrop (CRU) (ISul, Aap) n=61	Broken Hill Group BHGS(S) (Aap) n=35
Sb [0.1] ICP-MS	Concentration range (Mean)	0.10-1.50 (0.43)	*-0.3 (0.2)	*-1.5 (0.51)				
	25 th - 75 th percentile	0.21-0.40	0.15-0.25	0.2-0.5				
	95% confidence level	0.02	0.08	0.19				
	>90th percentile (outliers), # of samples	0.81-1.5 (3)	No outliers*	0.81-1.50 (4)	BDL	BDL	BDL	BDL
	<i>E. camaldulensis</i> position with the greatest concentration.	north region of Pine Creek, and adjacent to the Barrier Pinnacles Mine and depositional regolith-landform units Aap ₂ .	southern margin at the interface between TG and BHGN). Down stream of an NW intersecting Aed unit.	adjacent to the Barrier Pinnacles Mine. Flanked by regolith- landform units Aap ₁ , and CHpd ₃ .				

Table 4.39: Variations of Sb concentrations within *E. camaldulensis* (river red gums), flanking different land-form settings along Pine Creek. Initial values concentration range (mean), 25th - 75th percentile concentration range, 95 % confidence; level, >90th percentile (outliers), C= composite sample, * signifies values below detection limit.