

M. J. Seeliger



R.O.C.A. digest

Registered at the GPO Adelaide for transmission by post as a periodical - category B

Vol. 10 No.1

February 1976

Price 7c

THE AWARD OF MERIT



The President Gavin Eckersley (left) presenting
The Award of Merit to Ken Pike (right).

From the President...

JOHN A. JONES

There have been some changes in the committee this year with Peter Lewis (1962) and Andy Michaelmore (1940) being elected as ordinary committee members. Andy has been on the committee for several years as Proxy Delegate for the Eyre Peninsula Branch. This position has now been taken over by Jack Richards who is a new member to the committee along with Peter Lewis.

One area of concern on the committee is that position elected from the "graduating classes of the year". In recent years and again this year the position is vacant due to the lack of nominations. This position is very important because it keeps the committee informed of activities affecting the recent graduates.

I believe this position will eventually sort itself out as the bond between the students and the Old Collegians develops. Ways to strengthen this bond are for the two bodies to seek each others assistance, also the Old Collegians must let the students know of their activities. The aim of providing each of the students with our Digest is to do just that and ultimately create an interest in the Old Collegians Association.

A.T.A. as a professional association, caters for graduates from all agricultural colleges but I feel in South Australia we should seek each others assistance in those areas where it is appropriate. Two such areas are part of the R.O.C.A.'s objectives, namely, "to stimulate and encourage members to develop their agricultural interests" and "to encourage discussion in matters relative to agriculture".

The Eyre Peninsula Branch located at Port Lincoln and the Riverland Branch, with committee members located at Renmark, Berri, Loxton, Barmera and Waikerie, are doing well to cater for the members in their areas. Unfortunately the South Eastern Branch has not functioned for several years. I know there are a number of members in this area. I would hope there are a number of members who are willing to reform this Branch. If they contact our Secretary, Ian Rice at R.A.C., a list of members in the area can be supplied along with other assistance.

The close liaison with the College is developing and strengthening. The fact that this issue of the Digest has been designed and printed using the College facilities highlights this.



Management Committee

John Jones (Editor)
Richard Stewart
Reg Hutchinson
Gavin Eckersley

Editorial material to:
The Editor,
ROCA Digest
Agricultural College,
Roseworthy SA 5371

YOU SHOULD BE THERE

* NOT ONLY

WHEN? February 28th, 1976
WHERE? Port Lincoln
WHAT? Address by Dr. D.B. Williams
Director, Roseworthy Agricultural College
WHO TO? Old Collegians Eyre Peninsula Dinner and Reunion
WHY? To further promote the ideals of the Association
and cement the bonds between members

YOU SHOULD BE THERE

* BUT ALSO

WHEN? February 28th, 1976
WHERE? Port Lincoln
WHAT? Ladies Dinner and get together
WHO? Wives etc. of members attending Reunion
WHY? To involve our ladies in the Reunion

SHE SHOULD BE THERE

* AND ALSO

WHEN? February 29th, 1976
WHERE? Port Lincoln
WHAT? Beach Barbeque and Picnic
WHO? All the family
WHY? To involve our families in the Reunion

YOU SHOULD ALL BE THERE

DON'T MISS IT

For further details contact :

Darryl Hall,
Hon. Secretary,
R.O.C.A. E.P. Branch,
5 Martindale Crescent,
Port Linvoln.

ANNUAL REPORT

by Gavin Eckersley

The last twelve months have been a most satisfying period for the committee and we believe also for the Association. This period has seen a continuance and in many cases a completion of work undertaken during my first term as your President.

Once again our work has centred around what we believe are the true and practical objects of our Association :-

- 1) Close liaison between the College and the Director on all matters relating to the welfare and direction of the College as a learning institution.
- 2) Maintenance and improvement of the communication link of the Association namely the Digest.
- 3) Bridging the gap between the Student body and the Old Collegians.

The College

During the year the College has, from our vantage point, stabilised, consolidated and finally forged ahead, all within a short space of time. The committee has gained a first hand insight into these phases through several meetings being held within the confines of the College. Dr. Williams has attended most meetings personally and we have greatly appreciated his interest in the Association. I believe he is largely responsible for the much closer bond that now exists between the College and ourselves.

The Digest

It has only become effective during the latter part of the year and this only through the efforts of John Jones as Editor and the working parties organised to produce each edition. John is to be commended on his efforts and I am sure all agree the Digest is now making a worthwhile contribution to the life of the Association.

I should make mention here that I believe there is a strong tendency for the work of the Association via the committee and that of the Digest to fall mainly in the hands of a few. The trend must be reversed as this workload is burdensome and large and to be tolerable must be shared. To achieve this the Digest committee should be enlarged and if possible kept separate from the Association general committee with links only via the editor being involved with both committees. I would appreciate any discussion on this point.

The Students

Quite large milestones have been made in bridging the gap between the student body and ourselves. I was invited to represent the Association at the evening meal which celebrated the students being allowed unimpeded alcohol consumption at the College. This was done willingly but also further pleasure was derived from my attendance at the Student Union Council meeting after the dinner. During the meeting I answered many questions on the Association and its views on many queries facing current day students.

The students are genuinely concerned and I join with them in their concern at the current student numbers. With the present recession in Agriculture and a student enrolment of 237, I believe there is justification for this concern especially in view of the fact that some traditional employers are closing their doors i.e. Papua and New Guinea and the Government Departments of Education and Agriculture.

This matter warrants further attention from the committee and also A.T.A.

Other notable events during the year were -

- a) Eyre Peninsula Dinner and Reunion
- b) Resolution of the Honour Boards question
- c) R.O.C.A. Sports Award made to W.G. Shipway.

The Award of Merit

The winner for this year is Mr. Ken Pike. Ken's association with the Waite Institute over a span of 46 years has been acclaimed in many circles and makes him a most outstanding recipient.

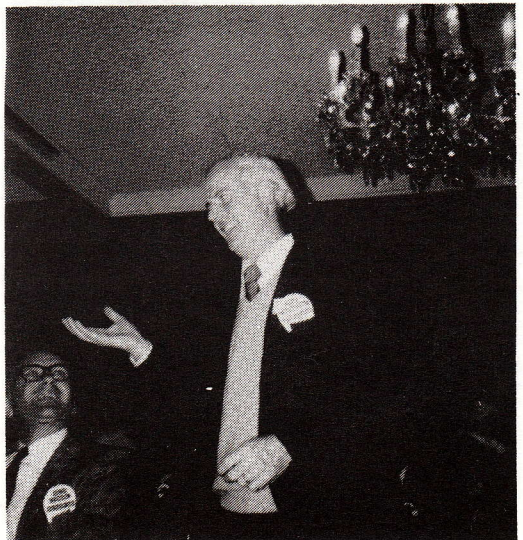
The other key task tackled by the Committee this year was this evening's proceedings and venue. We were disappointed with last year's attendance and believed change was necessary if we were to meet the needs of our members. The success of our efforts will be known later this evening.

The committee is also considering a suggestion from Dr. Williams that next years' dinner be held at the College. Thoughts of members on this matter would be of assistance.

In conclusion I would mention the efforts of the two committees I have worked with during my two years in office. I could not have asked for more willing assistance nor for better attendance at our many meetings. Finally as I retire from office I am a little regretful that my term has ended for I have enjoyed the duties of the office and gained a great deal of satisfaction from my involvement.



GRADUATED 10 YEARS AGO



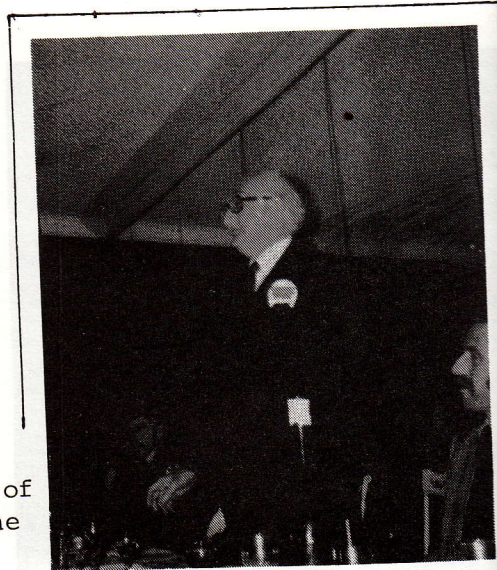
GRADUATED 25 YEARS AGO

1975 Annual Reunion Dinner and General Meeting.

The Annual gathering this year, held at the Berkeley Hotel, Hindley Street in the city, must surely rate as one of the most successful ever held.

A total of well over 100 members were present. The sudden up-surge in numbers was in sharp contrast to the dwindling attendances of previous years. Never before have members stood four deep at the A.G.M., because of lack of seating space; however this occurred at this meeting.

The usual highlights of the Annual Dinner were very well received, with Mr. Ken Pike being awarded the Award of Merit and the 10 and 25 year ago groups both giving a good account of themselves, in numbers and commentaries.



Dr. D.B. Williams, the Director of R.A.C., addressing members at the 1975 September Reunion Dinner.

Quite a large group of ladies chose the Town House for their evening out and it was most noticeable that this evening is becoming more popular. The Committee will probably need to assist with organisation and publicity for the ladies in future, as the numbers increase.

It had been stated in a previous digest that the Committee were aiming for a rejuvenation of the Annual Dinner and, as this was achieved, it is well worth reflecting why this occurred.

The principle factors, after talking to members on the night, appear to be :-

- Friday night instead of Saturday
- Comfortable atmosphere of the Berkeley, compared to the 'windy' Greyhound raceway.
- Central location.
- Publicity given prior to the night.

Whatever the reasons, it was most satisfying and this trend is bound to continue in view of the success on the night.



L to R Bob Herriot, Cliff Hooper,
Ken Pike, Gerry Woodroffe



L to R Ian Bidstrup, Jack Richards,
Des Habel, Alain Chartier

AGM and REUNION? You Can Help

The Committee is seeking your opinion about the A.G.M. and Reunion.

We would be most grateful if you could answer the questions below and return the slip to the Secretary of R.O.C.A., C/- Agricultural College, Roseworthy, 5371, as soon as possible.

1. The years you attended R.A.C.
2. Attendance at Reunions in Adelaide are
 - (a) Regularly
 - (b) Occasionally
 - (c) Never
3. When did you last attend a Reunion?
4. You have not attended a Reunion because :
 - (a) Too much travelling
 - (b) Time of year not suitable
 - (c) Type of function not enjoyable.
5. What aspects of the Reunion do you like/not like?
6. The Reunion should be held where
 - (a) City
 - (b) Suburbs
 - (c) R.A.C. (alcohol is now permitted at the College)and when
 - (a) Month
 - (b) Night or Day
 - (c) Which day of week
7. Type of function
8. We now have a 10 year and 25 year ago group - what about a 2 year ago and 50 year ago group?
9. Should a Family Day BBQ at R.A.C. follow the Reunion Dinner on the weekend (Sunday)?

10. Should a ladies evening at a separate venue be contemplated?

11. What area do you come from

Adelaide

15 miles out from Adelaide G.P.O.

25 miles " " " "

50 miles " " " "

100 miles " " " "

Interstate

12. Anything else

Now you have read the questions could you please fill it out and return it. It's worth 18¢ postage to continue the success of the Reunions.



At the 1975 Reunion L to R
Philpy (B.C. Philp) and Rex Kuchel.

RIVERLAND REUNION 17 SEPTEMBER 1975

A good evening was had by all who attended the Riverland Branch Reunion at Renmark,

Invited to the Reunion was Mr. M.B. Spurling, Assistant Director, who enlightened the gathering on the developments occurring at the College. Mr. Derek Sutcliffe, Engineering Instructor at Roseworthy College and Mr. John Jones, President of R.O.C.A. also attended the evening.

The new Riverland Committee elected for 1975/76 will be guided by Tom Simes as President, who is also the representative from Barmera. The Secretary's position is in the capable hands of John Liebelt. Keven Phfiefer has been elected R.O.C.A. Delegate and his proxy is Ross Wishart.

THE AWARD OF MERIT

This notice is to get you thinking about R.O.C.A. members who you consider should be nominated for the Award of Merit for their contribution to agriculture. Any names that come to mind, should be sent to the Secretary of R.O.C.A., C/- Agricultural College, Roseworthy, 5371.

DIARY NOTICE

The 1976 A.G.M./Reunion date has been set for Friday, September 3rd, which is the last Friday of the Royal Adelaide Show. So mark this date on your calendar - we will let you know where to go in later digests.

can you help?

College plans to establish a Museum depicting the early history of R.A.C. and its contributions to Australian agriculture are now well advanced.

A Lecturer in Agricultural History has been appointed, and as a part of his duties, he will oversee the development of the Museum.

In addition, some financial support has been obtained from outside the College.

Members of R.O.C.A. who have any historical documents, photographs, newspaper articles, diplomas, early copies of R.A.C. records, or anything else, are asked to advise the College, with the view that they be donated.

It is planned to preserve these and make copies for display.

Also, members are asked to advise the College of any antique agricultural equipment they may have which can be recorded and inspected at a later date.

Donations and information can be forwarded to the R.A.C. Museum Committee, Agricultural College, Roseworthy, 5371.



CUTTING COSTS - THE KEY TO FARMING IN 1975

In the opening address to Farmers' Day, October 17th 1975, Mr. P.J. England, Lecturer in Farm Management at Roseworthy Agricultural College, said "Hopefully, farmers should be able to obtain from their farms a wage comparable with that earned by non-farm workers with a similar skill, plus a reasonable rate of return on the large amount of capital tied up in land, livestock and plant.

Since 1960-1963, prices paid by farmers for their inputs have risen by almost twice as much as the average increase in prices received for farm produce."

Mr. P.J. England went on to say that farmers in some industries are very much worse off, while other industries are at present relatively profitable.

Some costs have risen much faster than others and there is a great variation in the price received to the extent that, on average, cereal and horticultural farmers are not affected in income earning as much as livestock farmers.

Mr. England said, "for farmers to survive and prosper they must adopt management strategies to offset these rapidly rising costs." He suggested ways to offset the cost-price squeeze by :

- (a) reducing input expenditure such as use of shared plant ownership or use of contractors;
- (b) increase gross income while holding expenses constant, can be done by pasture improvement, higher yielding crop varieties, weed and pest control, i.e. increase production per unit area of land;
- (c) ensure that any increase in expenses are more than offset by increases in gross income by ensuring they obtain the best ruling price by paying attention to, choice of variety, care in harvesting (barley), handling (milk), grading (wool);

- (d) obtain off-farm work (contracting, casual work) to supplement farm income.

The starting point of any attempt to reduce costs should be a thorough analysis of the present cost structure of the farm business. Mr. England said, "Without adequate records and financial analysis, it is difficult to identify areas in the farming business operation where costs are excessive or where profits are too low. Once problem areas are identified, the economics of alternative management strategies which could be adopted must be assessed. Frequent checking and updating of the farm plan are also necessary."

OPEN DAYS

Farmers' Day on October 17th, 1975, was well attended with over 350 people. On the preceding day, Thursday, an Agricultural School Students Day was held with a programme similar to the Farmers' Day.

The Open Day on the Saturday, October 18th, fell foul of the weather but despite the continual drizzle in the afternoon, had a roll up of over 3,000 people.

ROSEWORTHY ROUNDUP REG HUTCHINSON



1975 has finally wound up, having been a year of change at the College. 1976 is upon us and promises to continue the pace of 1975 with the introduction of two new courses.

The Roseworthy Associate Diploma in Farming is to begin in June (further details in this issue of the Digest). Also starting this year is a one year post-graduate course in Agriculture for students from the Near East and North Africa. This course has been arranged by the F.A.O. United Nations Development Programme (concerned with Regional Projects in Field Food Crops) in conjunction with the Freedom From Hunger Campaign.

Sport

The hockey girls won the Grand Final again this year, defeating Clare Red 1-0. In football, the A's did not get to the final round. The B's however, carried the name of the College to the Grand Final, but were defeated by Centrals.

Intercol was held at R.A.C. last year. Roseworthy won the tennis, and ladies squash and came third of the 6 teams playing basketball.

Staff

Plant Breeder, Gil Hollamby, spent 3 months overseas investigating plant breeding activities in other countries. His trip took him to U.S.A., Europe and Mexico. He attended the International Wheat Breeding Conference in Yugoslavia while in Europe, and has some new ideas on breeding for rust resistance.

Ian Rice has just returned from 4 months in Libya as Field Officer for Shearers, instructing and demonstrating the use of machinery that Shearers have exported there.

Jim Probert resigned after 21 years at the College as Dairy herdsman. He has moved to Victor Harbour to help his son-in-law - at guess what? - milking cows!

Warwick Shipway (R.D.A.T. 1975) is relieving at the Dairy as herdsman until he goes overseas in July 1976.

It is with regret we inform you that Ralph Back passed away in December after 23 years service to the College.

Len Fischer has retired from the vegetable garden and Bob Wade resigned from the garden.

The Farm

The College beef cattle were quite successful at the Gawler Show, with Junior Champion Bull and Senior Champion Bull which gave the Supreme Champion Bull ribbon to Roseworthy Tiger.

The College is recovering from the extreme feed shortage experienced in 1975, following the purchase of 16,000 bales of hay from Two Wells, Mallala, Marrabel and Stockport, and the proposal to purchase standing oat crops to be reapt for College use.

ROSEWORTHY ASSOCIATE DIPLOMA IN FARMING

In 1976, the College will introduce a two-year Roseworthy Associate Diploma in Farming. The course will provide training in financial and farm business management integrated with farm technology relevant to the students particular industry.

The course is to be divided into the following fields of study :

- Financial and Farm Business Management
- Marketing and Agricultural Policy
- Crop and Animal Husbandry
- Farm Mechanics
- General Agricultural Studies

Students will have opportunity to make a more intensive study of their chosen agricultural industries within the broad classifications of :

- Crops, Pastures / Extensive Livestock
- Horticulture / Viticulture
- Intensive Livestock

Each year between mid-June and late November, there will be two semesters of lectures, tutorials, practical work and educational tours. During the periods December to June students will be required to undertake an additional four weeks of course work at a mutually convenient time.

The Calendar

Year I, 1976

Semester I	June 14 to August 20 (10 weeks)
Vacation	3 weeks
Semester II	September 13 to November 26 (11 weeks)
	The last week will be taken up by a tour.
Specialised Study	4 week period between January and June 1977.

Year II, 1977

Semester I	June to August (10 weeks)
Vacation	3 weeks
Semester II	September to November (11 weeks)
Specialised Study	4 week period between January and June 1978.

Teaching Guidelines

The College plans to relate much of the teaching of farm management in this Course to the home area and enterprises of each student. Emphasis will be placed on case studies and practical work. As a useful guide, course time generally will be allocated on the basis of one hour of lectures, accompanied by 2 hours of discussion and 3 to 4 hours of field or practical work.

Assessment

Emphasis will be placed on assessment by practical performance. Assignments and projects will be completed progressively during the course. Students will apply newly acquired knowledge to their own practical farming situations, and there will be some assessment by examination.

Entry Requirements

The normal entry requirements will be the completion of secondary education and at least one year of acceptable practical farming experience. Persons completing secondary education in 1975 will be required to gain appropriate farm experience, and may be accepted in 1976 for entry in 1977, subject to obtaining the necessary experience. Provision is made for mature age entry by practising farmers who have not completed secondary education but have demonstrated their ability to complete the course.

Admission

Applications for enrolment in 1976 will be required by 31 March, 1976. Preference may be given to applicants who apply before this date. Applicants may be required :

- . to provide references
- . to provide a record of previous education
- . to provide medical and dental certificates of fitness
- . to attend an interview.

Fees and Accommodation

No tuition fees are charged. However, every student is required to pay a Student Union fee. The College hopes to provide accommodation in 1976 for students enrolling in the course. Residential fees based on a charge of approximately \$1000 for a full academic year.

Assistance is required in locating the addresses of the following members. If you can help, please fill in this page and send to The Secretary of R.O.C.A., C/- Agricultural College, Roseworthy, 5371.

Ordinary Members:

1959 Latimer R.G. _____
1968 Usher T.R. _____

Life Members:

1956 Baldwin G.B. _____
1958 Ballantyne G.P. _____
1925 Bested M.O. _____
1931 Bevis A.C.K. _____
1940 Bidstrup B.P. _____
1946 Bishop R.J. _____
1949 Breaker G.A.H. _____
1959 Brown P.M. _____
1917 Catt K.C. _____
1939 Chaffey W.B. _____
1945 Chinnick M.F. _____
1914 Clark L.J. _____
1962 Clayton R.H. _____
1915 Conway B. _____
1967 Cooper M.J. _____
1956 Crompton P.D. _____
1957 Cunningham J.D. _____
1948 Davidson J.L. _____
1948 Day I.J. _____
1959 Diener M.J. _____
1962 Driver R. _____
1930 Elliot K.A. _____
1948 Fawcett R.G. _____
1914 Fuller B. _____
1932 Gilbert A.G.W. _____
1961 Gliddon W.B. _____
1956 Golding D. _____
1954 Gregory R.G. _____
1970 Growden B. _____
1954 Heaslip J.G. _____

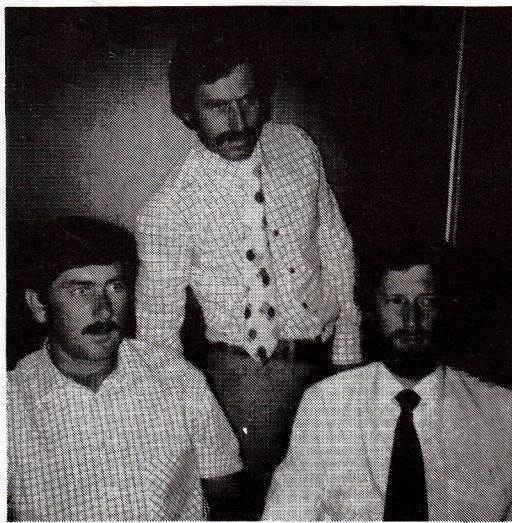
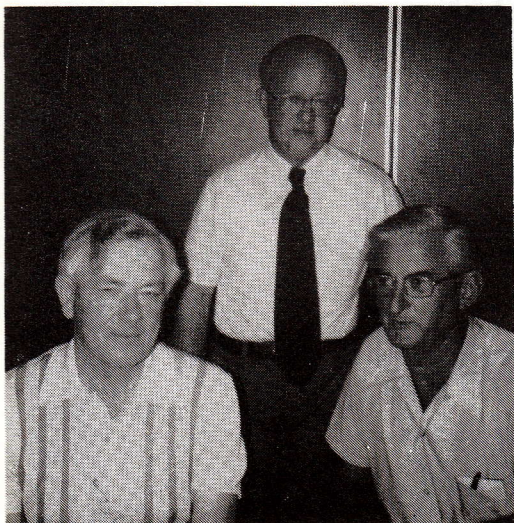
1949 Hepworth B. _____
1950 Hickinbotham I.L. _____
1946 Hill R.J. _____
1955 Hilpern C.A. _____
1959 Hincks G.S. _____
1929 Honner A.T. _____
1958 Jones I.E. _____
1923 Kitto D.V. _____
1961 McCulloch Dr. R.N. _____ ✧
1937 McEwin G.G. _____
1938 McGillivray N.R. _____
1951 Mac. Gillivray W.A. _____
1941 MacLeod A.N. _____
1936 Mann L.S. _____
1906 Martin R. _____
1959 Merrigan B.J. _____
1951 Miles K.G. _____
1956 Monger P.A. _____
1950 Morris D.G. _____
1966 O'Donnell C.D. _____
1903 Packer R. _____
1941 Pearse S.F. _____
1956 Pennells J.B. _____
1911 Phillips F.L. _____
1926 Phillips J.S. _____
1955 Renk J.A. _____
1898 Richardson H.B. _____
1907 Robertson C.S. _____
1954 Sands W.R. _____
1954 Sexton R.P. _____
1907 Shand F.H. _____
1966 Shepherd B.W. _____
1937 Shepherd W.L. _____
1964 Stiller T. _____
1959 Tan S.L. _____
1932 Torr T.H. _____
1945 Verco J.W. _____
1915 Walkem G.C. _____
1946 Walters J.R. _____
1919 Warren A.L. _____
1940 Wilkinson J.I. _____

The Committee

FOR 1975/76 - ELECTED AT THE SEPTEMBER A.G.M. 1975

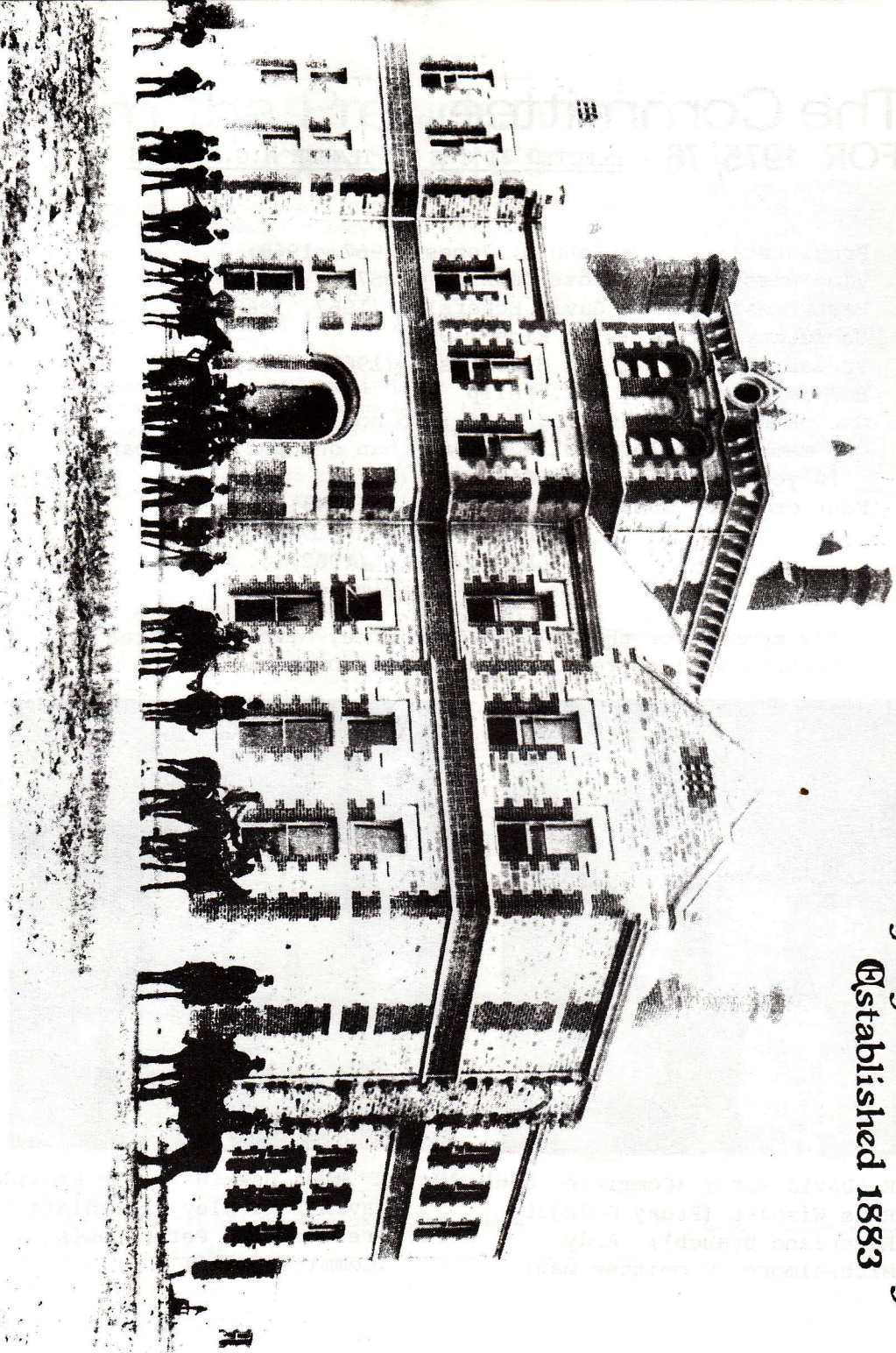
President : John A. Jones (1967, 1968)
Vice President : Ross Dawkins (1967)
Past President : Gavin Eckersley (1967, 1968)
Secretary : Ian Rice (1957)
Treasurer : Reg Hutchinson (1967, 1972)
Honorary Auditor : B.C. Philp
One member of graduating year : No nomination
One member who left College more than one and less than
10 years ago : Doug Clifford (1973)
Four ordinary members : David Suter (1943)
: Harry Stephen (1948)
: Peter Lewis (1962)
: Andy Michaelmore (1940)

Six members of the 1975/76 Committee, other Committee members will be featured in a later Digest.



L to R David Suter (Committee man); L to R Ross Dawkins (Vice President)
Ross Wishart (Proxy Delegate Riverland Branch); Andy Michealmore (Committee man)
Gavin Eckersley (Immediate Past President); Peter Lewis (Committee man)

Roseworthy Agricultural College
Established 1883



RODFORD, PHOTO.

AGRICULTURAL COLLEGE and EXPERIMENTAL FARM, ROSEWORTHY.

PULTENEY STREET, ARLAND.